

CONSULTANTS

- CIVIL**
Braedlove Land Planning
15 Simpson St. NW, Atlanta, GA 30308
- STRUCTURAL**
Uzun+Case
1230 Peachtree St. NE, Suite 2500, Atlanta, GA 30309
- MEP**
Matheson Ball & Associates
11285 Elkins Rd., Suite F3, Roswell, GA 30078
- LANDSCAPING**
Perkins+Will
1315 Peachtree St. NE, Atlanta, GA 30309
- Camacho**
3103 Medlock Bridge Road, Norcross, GA 30071

OWNER
KIPP Metro Atlanta Schools
504 Fair St. SW Suite 300

CONTRACTOR

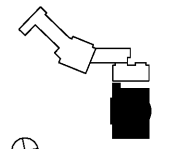
PROJECT

RELEASED FOR CONSTRUCTION 06/07/2019

**KIPP ATLANTA
COLLEGIATE - Addition
and Renovations**
98 Anderson Ave NW
Atlanta GA 30314



KEYPLAN



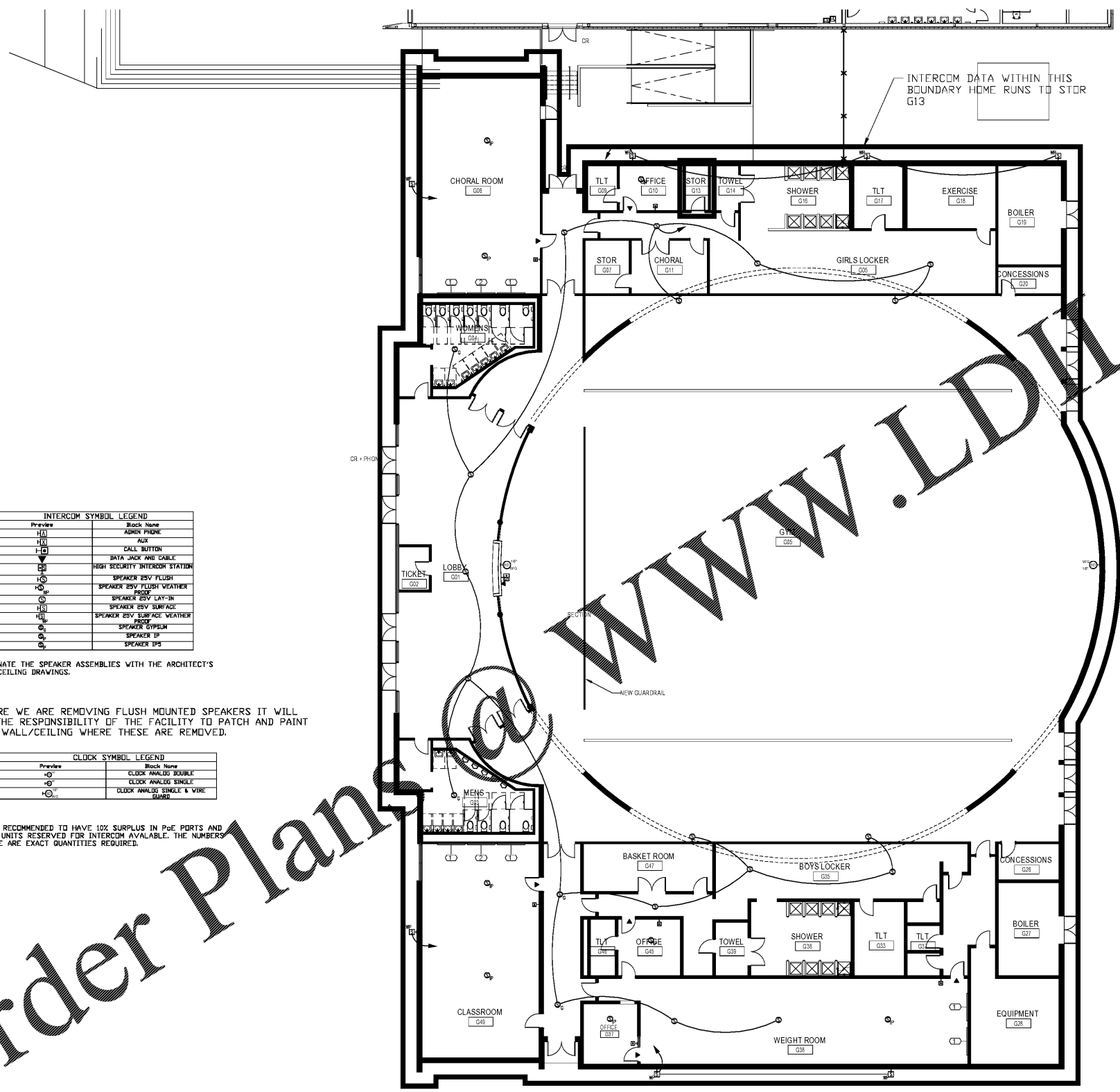
ISSUE CHART

DATE	ISSUE	DATE

**FLOOR PLAN - FIRST
FLOOR - PART C - INTERCOM**

SHEET NUMBER

E3.1C



INTERCOM SYMBOL LEGEND

Preview	Block Name
HA	ADMIN PHONE
AK	AKS
CB	CALL BUTTON
DA	DATA JACK AND CABLE
HS	HIGH SECURITY INTERCOM STATION
FS	SPEAKER ISV FLUSH
FW	SPEAKER ISV FLUSH WEATHER PROOF
LS	SPEAKER ISV LAY-IN
SS	SPEAKER ISV SURFACE
SW	SPEAKER ISV SURFACE WEATHER PROOF
SP	SPEAKER ISV SPEAK
IS	SPEAKER ISV

NOTE:
COORDINATE THE SPEAKER ASSEMBLIES WITH THE ARCHITECT'S FINAL CEILING DRAWINGS.

WHERE WE ARE REMOVING FLUSH MOUNTED SPEAKERS IT WILL BE THE RESPONSIBILITY OF THE FACILITY TO PATCH AND PAINT THE WALL/CEILING WHERE THESE ARE REMOVED.

CLOCK SYMBOL LEGEND

Preview	Block Name
CS	CLOCK ANALOG DOUBLE
CS1	CLOCK ANALOG SINGLE
CS2	CLOCK ANALOG SINGLE & WIRE BOARD

NOTE:
IT IS RECOMMENDED TO HAVE 10% SURPLUS IN PoE PORTS AND RACK UNITS RESERVED FOR INTERCOM AVAILABLE. THE NUMBERS ABOVE ARE EXACT QUANTITIES REQUIRED.

Order Plan

① 01 - FIRST FLOOR - PART C - INTERCOM
3/32" = 1'-0"