

DATE	ISSUE	DATE

Job Number _____ PAT
 Drawn _____ PAT
 Checked _____ PAT
 Approved _____ PAT
 TITLE _____

INTERCOM SYMBOL LEGEND

Prefix	Block Name
INT	INTERCOM
INT	CALL BUTTON
INT	DATA JACK AND CABLE
INT	HIGH SECURITY INTERCOM STATION
INT	SPEAKER ISV FLUSH
INT	SPEAKER ISV FLUSH WEATHER PROOF
INT	SPEAKER ISV LAY-IN
INT	SPEAKER ISV SURFACE
INT	SPEAKER ISV SURFACE WEATHER PROOF
INT	SPEAKER ISVSLM
INT	SPEAKER IPS

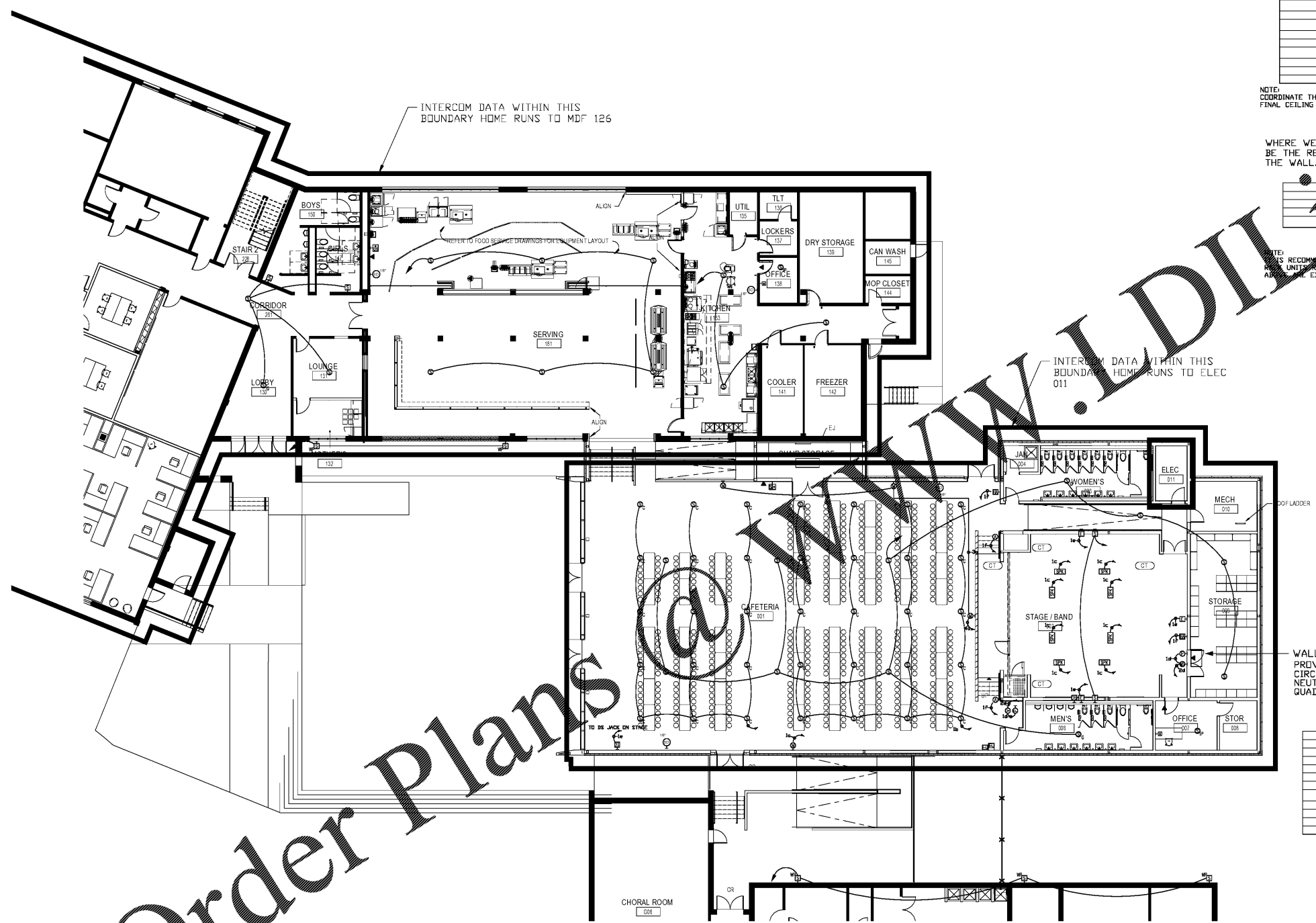
NOTE:
COORDINATE THE SPEAKER ASSEMBLIES WITH THE ARCHITECT'S FINAL CEILING DRAWINGS.

WHERE WE ARE REMOVING FLUSH MOUNTED SPEAKERS IT WILL BE THE RESPONSIBILITY OF THE FACILITY TO PATCH AND PAINT THE WALL/CEILING WHERE THESE ARE REMOVED.

CLOCK SYMBOL LEGEND

Prefix	Block Name
INT	CLOCK ANALOG DOUBLE
INT	CLOCK ANALOG SINGLE
INT	CLOCK ANALOG SINGLE & WIRE GUARD

NOTE:
IT IS RECOMMENDED TO HAVE 10% SURPLUS IN PoE PORTS AND PoE UNITS RESERVED FOR INTERCOM AVAILABLE. THE NUMBERS ABOVE ARE EXACT QUANTITIES REQUIRED.



INTERCOM DATA WITHIN THIS BOUNDARY HOME RUNS TO MDF 126

INTERCOM DATA WITHIN THIS BOUNDARY HOME RUNS TO ELEC 011

WALL MOUNTED EQUIPMENT CABINET PROVIDE 2EA. 120VAC 20A CIRCUITS WITH DEDICATED NEUTRAL AND GROUND ON QUAD OUTLETS IN BACKBOX

SOUND SYSTEM SYMBOL LEGEND

Prefix	Block Name
INT	ISOMIX CONNECTION
INT	EXPANDER INPUT
INT	HEARING ASSISTANCE
INT	MICROPHONE INPUT
INT	REMOTE "HOME" SELECTOR
INT	REMOTE SYSTEM POWER
INT	REMOTE SYSTEM CONTROL
INT	SPEAKER CAFETERIA
INT	SPEAKER STAGE
INT	WIRELESS ANTENNA

① 01 - FIRST FLOOR - PART - B - INTERCOM
3/32" = 1'-0"

Order Plans @ www.perkinswill.com

www.perkinswill.com