

CONSULTANTS

- CIVIL**
Braedlove Land Planning
15 Simpson St. NW, Atlanta, GA 30308
- STRUCTURAL**
Uzun+Case
1230 Peachtree St. NE, Suite 2500, Atlanta, GA 30309
- MEP**
Matheson Ball & Associates
11285 Elkins Rd., Suite F3, Roswell, GA 30078
- LANDSCAPING**
Perkins+Will
1315 Peachtree St. NE, Atlanta, GA 30309
- Camacho**
3103 Medlock Bridge Road, Norcross, GA 30071

OWNER
KIPP Metro Atlanta Schools
504 Fair St. SW Suite 300

FACILITY

CONTRACTOR

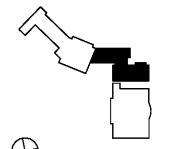
PROJECT

**KIPP ATLANTA
COLLEGIATE - Addition
and Renovations**
98 Anderson Ave NW
Atlanta GA 30314

RELEASED FOR CONSTRUCTION 06/07/2019



KEYPLAN



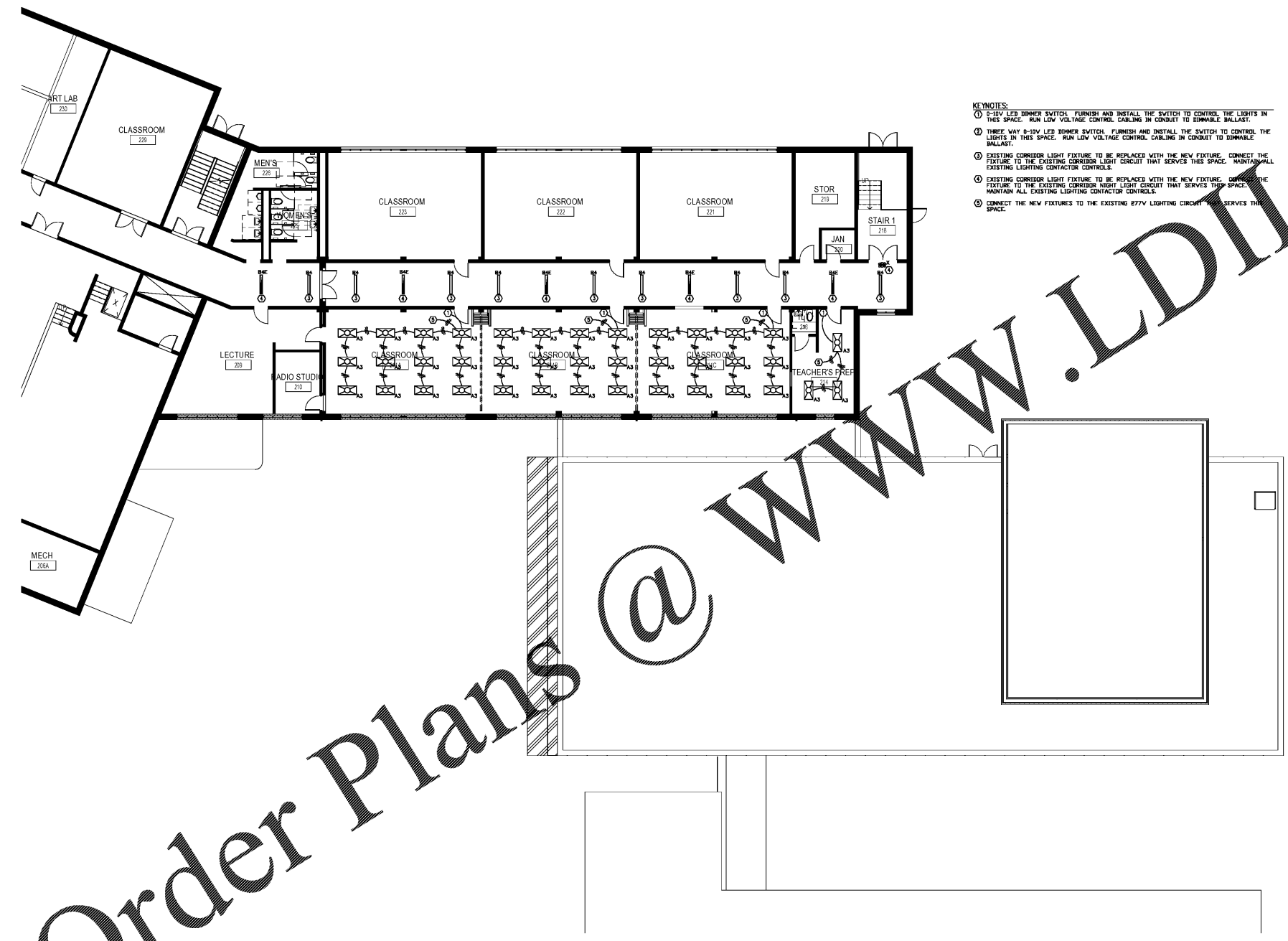
ISSUE CHART

NO.	ISSUE	DATE
Job Number		
Drawn	PAT	
Checked	PAT	
Approved	PAT	

**FLOOR PLAN -
SECOND FLOOR -
PART B LIGHTING**

SHEET NUMBER

E1.2B



- KEYNOTES:**
- 1- NEW LED DIMMER SWITCH. FURNISH AND INSTALL THE SWITCH TO CONTROL THE LIGHTS IN THIS SPACE. RUN LOW VOLTAGE CONTROL CABLE IN CONDUIT TO DIMMABLE BALLAST.
 - 2- THREE WAY 0-25V LED DIMMER SWITCH. FURNISH AND INSTALL THE SWITCH TO CONTROL THE LIGHTS IN THIS SPACE. RUN LOW VOLTAGE CONTROL CABLE IN CONDUIT TO DIMMABLE BALLAST.
 - 3- EXISTING CORRIDOR LIGHT FIXTURE TO BE REPLACED WITH THE NEW FIXTURE. CONNECT THE FIXTURE TO THE EXISTING CORRIDOR LIGHT CIRCUIT THAT SERVES THIS SPACE. MAINTAIN ALL EXISTING LIGHTING CONTACTOR CONTROLS.
 - 4- EXISTING CORRIDOR LIGHT FIXTURE TO BE REPLACED WITH THE NEW FIXTURE. CONNECT THE FIXTURE TO THE EXISTING CORRIDOR NIGHT LIGHT CIRCUIT THAT SERVES THIS SPACE. MAINTAIN ALL EXISTING LIGHTING CONTACTOR CONTROLS.
 - 5- CONNECT THE NEW FIXTURES TO THE EXISTING 277V LIGHTING CIRCUIT THAT SERVES THIS SPACE.

1 02 - SECOND FLOOR - PART B LIGHTING
3/32" = 1'-0"