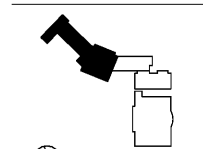


RELEASED FOR CONSTRUCTION 06/07/2019

**KIPP ATLANTA
COLLEGIATE - Addition
and Renovations**
98 Anderson Ave NW
Atlanta GA 30314

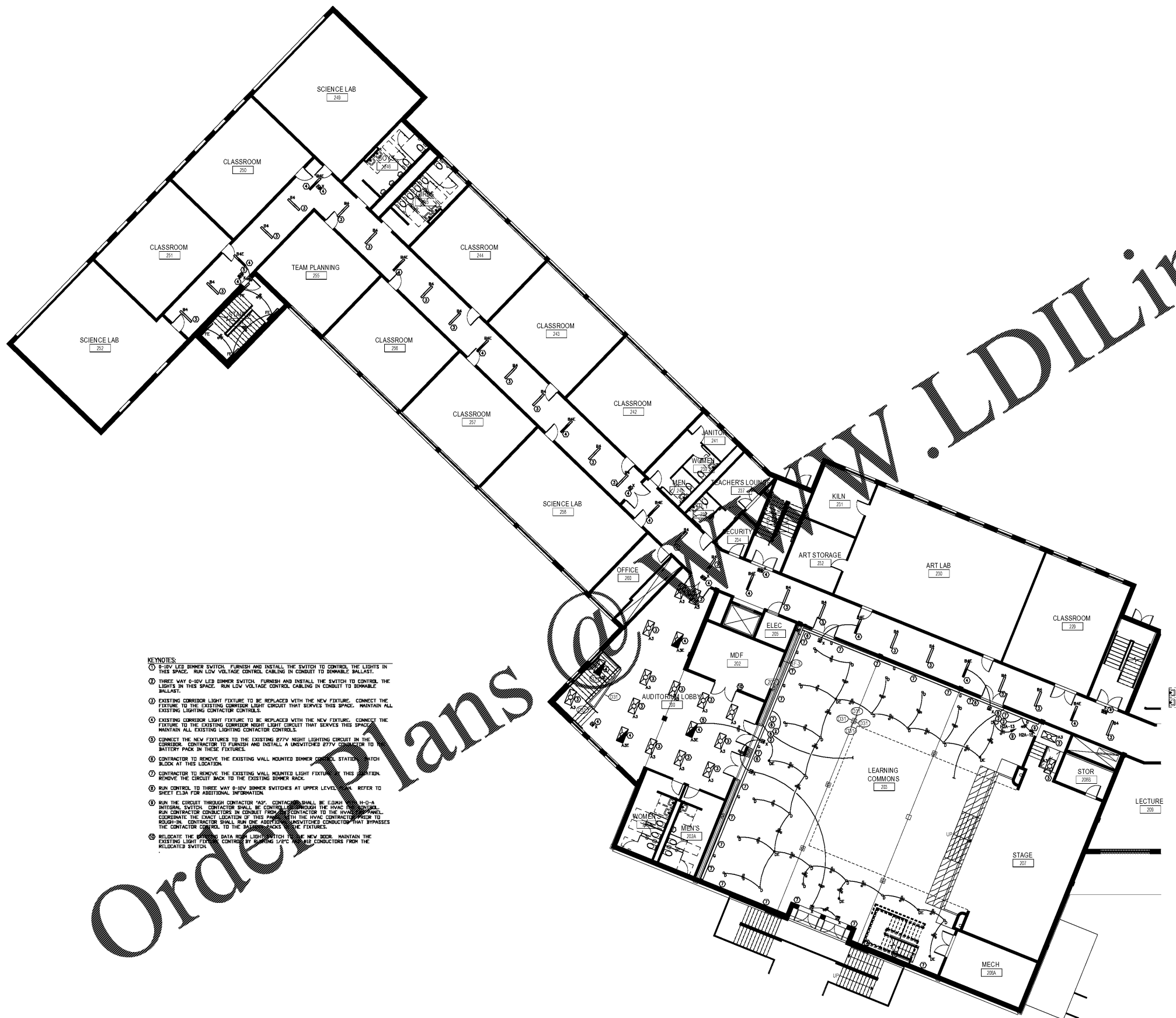


DATE	ISSUE	DATE
Job Number		
Drawn	PAT	
Checked	PAT	
Approved	PAT	

TITLE
**FLOOR PLAN -
SECOND FLOOR -
PART A**

SHEET NUMBER

E1.2A



- KEYNOTES:**
- 0-10V LED DIMMER SWITCH. FURNISH AND INSTALL THE SWITCH TO CONTROL THE LIGHTS IN THIS SPACE. RUN LOW VOLTAGE CONTROL CABLING IN CONDUIT TO DIMMABLE BALLAST.
 - THREE WAY 0-10V LED DIMMER SWITCH. FURNISH AND INSTALL THE SWITCH TO CONTROL THE LIGHTS IN THIS SPACE. RUN LOW VOLTAGE CONTROL CABLING IN CONDUIT TO DIMMABLE BALLAST.
 - EXISTING CORRIDOR LIGHT FIXTURE TO BE REPLACED WITH THE NEW FIXTURE. CONNECT THE FIXTURE TO THE EXISTING CORRIDOR LIGHT CIRCUIT THAT SERVES THIS SPACE. MAINTAIN ALL EXISTING LIGHTING CONTRACTOR CONTROLS.
 - EXISTING CORRIDOR LIGHT FIXTURE TO BE REPLACED WITH THE NEW FIXTURE. CONNECT THE FIXTURE TO THE EXISTING CORRIDOR NIGHT LIGHT CIRCUIT THAT SERVES THIS SPACE. MAINTAIN ALL EXISTING LIGHTING CONTRACTOR CONTROLS.
 - CONNECT THE NEW FIXTURES TO THE EXISTING 277V NIGHT LIGHTING CIRCUIT IN THE CORRIDOR. CONTRACTOR TO FURNISH AND INSTALL A UNSWITCHED 277V CONDUCTOR TO THE BATTERY PACK IN THESE FIXTURES.
 - CONTRACTOR TO REMOVE THE EXISTING WALL MOUNTED DIMMER CONTROL SWITCH BLOCK AT THIS LOCATION.
 - CONTRACTOR TO REMOVE THE EXISTING WALL MOUNTED LIGHT FIXTURE AT THIS LOCATION. REMOVE THE CIRCUIT BACK TO THE EXISTING DIMMER RACK.
 - RUN CONTROL TO THREE WAY 0-10V DIMMER SWITCHES AT UPPER LEVELS. REFER TO SHEET E1.2A FOR ADDITIONAL INFORMATION.
 - RUN THE CIRCUIT THROUGH CONTACTOR "M". CONTACTOR SHALL BE EDGEMOUNTED IN-DOOR INTERNAL SWITCH. CONTRACTOR SHALL BE CONTROLLED THROUGH THE HVAC PANEL. RUN CONTRACTOR CONDUCTORS IN CONDUIT FROM THE CONTRACTOR TO THE HVAC PANEL. COORDINATE THE EXACT LOCATION OF THIS PANEL WITH THE HVAC CONTRACTOR PRIOR TO ROUGH-IN. CONTRACTOR SHALL RUN ONE ABSOLUTE UNSWITCHED CONDUCTOR THAT BYPASSES THE CONTRACTOR CONTROL TO THE DIMMER SWITCHES AT THE FIXTURES.
 - RELOCATE THE EXISTING DATA RACK LIGHT SWITCH TO THE NEW ROOM. MAINTAIN THE EXISTING LIGHT FIXTURES CONTROL BY DIMMING 1/2" CONDUIT FROM THE CONDUCTORS FROM THE RELOCATED SWITCH.

Order Plans

WWW.LDILine.com