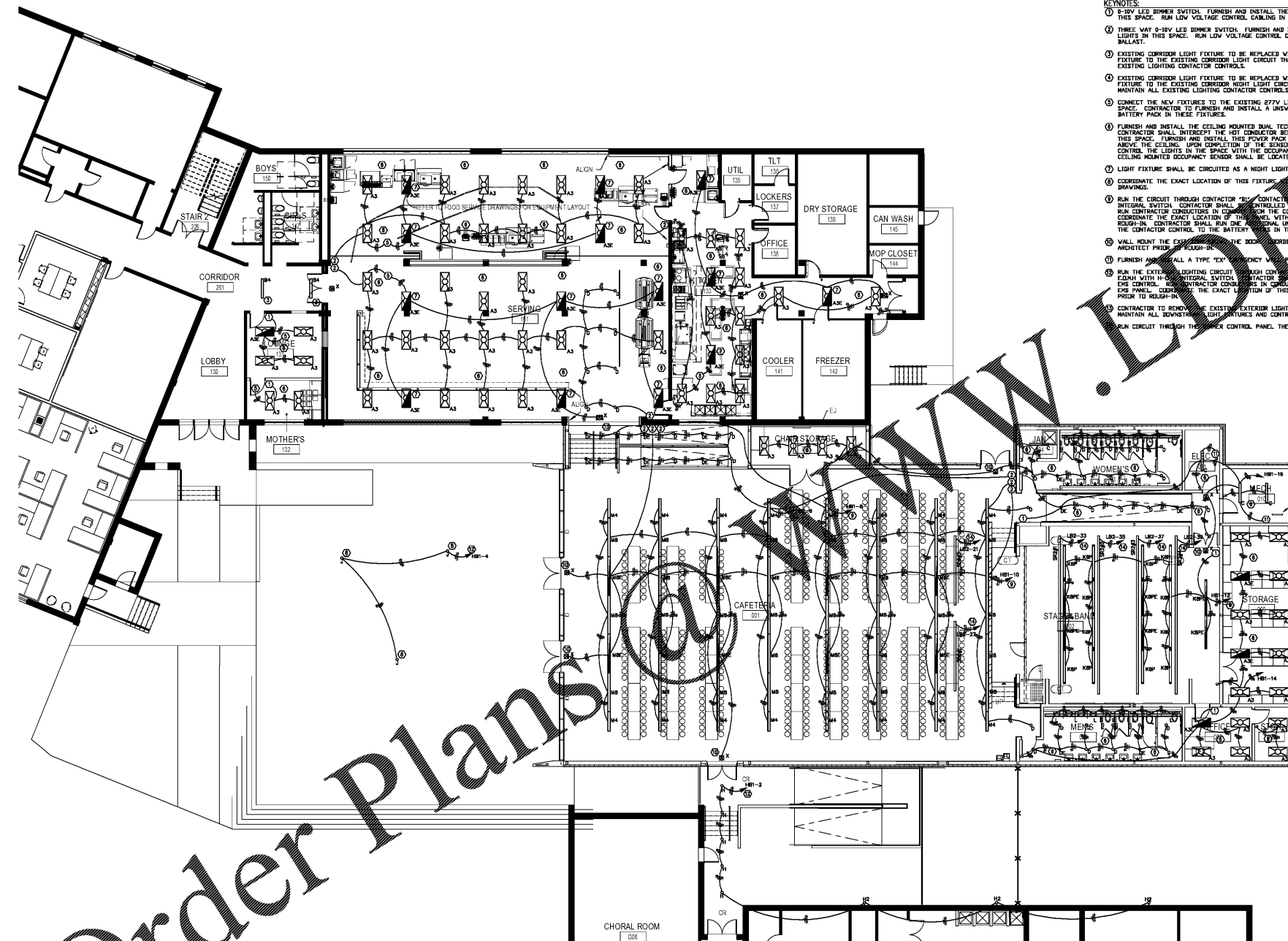


DATE	ISSUE	DATE
Job Number		
Drawn	PAT	
Checked	PAT	
Approved	PAT	
TITLE		



**KEYNOTES:**

- 8-SV LED DIMMER SWITCH. FURNISH AND INSTALL THE SWITCH TO CONTROL THE LIGHTS IN THIS SPACE. RUN LOW VOLTAGE CONTROL CABLE IN CONDUIT TO DIMMABLE BALLAST.
- THREE WAY 8-SV LED DIMMER SWITCH. FURNISH AND INSTALL THE SWITCH TO CONTROL THE LIGHTS IN THIS SPACE. RUN LOW VOLTAGE CONTROL CABLE IN CONDUIT TO DIMMABLE BALLAST.
- EXISTING CORRIDOR LIGHT FIXTURE TO BE REPLACED WITH THE NEW FIXTURE. CONNECT THE FIXTURE TO THE EXISTING CORRIDOR LIGHT CIRCUIT THAT SERVES THIS SPACE. MAINTAIN ALL EXISTING LIGHTING CONTRACTOR CONTROLS.
- EXISTING CORRIDOR LIGHT FIXTURE TO BE REPLACED WITH THE NEW FIXTURE. CONNECT THE FIXTURE TO THE EXISTING CORRIDOR NIGHT LIGHT CIRCUIT THAT SERVES THIS SPACE. MAINTAIN ALL EXISTING LIGHTING CONTRACTOR CONTROLS.
- CONNECT THE NEW FIXTURES TO THE EXISTING 277V LIGHTING CIRCUIT THAT SERVED THIS SPACE. CONTRACTOR TO FURNISH AND INSTALL A UNWITCHED 277V CONDUCTOR TO THE BATTERY PACK IN THESE FIXTURES.
- FURNISH AND INSTALL THE CEILING MOUNTED DUAL TECHNOLOGY OCCUPANCY SENSOR. CONTRACTOR SHALL INTERCEPT THE HOT CONDUCTOR BEFORE THE LIGHT SWITCH CONTROLS IN THIS SPACE. FURNISH AND INSTALL THIS POWER PACK IN A NEARBY ENCLOSURE LOCATED ABOVE THE CEILING. UPON COMPLETION OF THE SENSOR THE LIGHT SWITCHES SHALL SUB CONTROL THE LIGHTS IN THE SPACE WITH THE OCCUPANCY SENSOR PROVIDING CONTROL. CEILING MOUNTED OCCUPANCY SENSOR SHALL BE LOCATED IN THE CENTER OF THE ROOM.
- LIGHT FIXTURE SHALL BE CIRCUITED AS A NIGHT LIGHT.
- COORDINATE THE EXACT LOCATION OF THIS FIXTURE WITH THE LANDSCAPE PLAN AND CIVIL DRAWINGS.
- RUN THE CIRCUIT THROUGH CONTACTOR "E1". CONTACTOR SHALL BE EDWH WITH H-2000 INTERNAL SWITCH. CONTRACTOR SHALL INTERCEPT FROM THE HVAC ENG CONT. COORDINATE THE EXACT LOCATION OF THIS PANEL WITH THE HVAC CONTRACTOR PRIOR TO ROUGH-IN. CONTRACTOR SHALL RUN ONE ADDITIONAL UNWITCHED CONDUCTOR THAT BYPASSES THE CONTRACTOR TO THE BATTERY PACK IN THE FIXTURE.
- WALL MOUNT THE EXISTING EMERGENCY LIGHTS. COORDINATE THE WALL LOCATION WITH THE ARCHITECT PRIOR TO ROUGH-IN.
- FURNISH AND INSTALL A TYPE "EX" EMERGENCY WALL PACK AT THIS LOCATION.
- RUN THE EXISTING LIGHTING CIRCUIT THROUGH CONTACTOR "E1". CONTRACTOR SHALL BE EDWH WITH H-2000 INTERNAL SWITCH. CONTRACTOR SHALL BE CONTROLLED THROUGH THE HVAC ENG PANEL. COORDINATE THE EXACT LOCATION OF THIS PANEL WITH THE HVAC CONTRACTOR PRIOR TO ROUGH-IN.
- CONTRACTOR TO REMOVE THE EXISTING EXTERIOR LIGHTING WALL PACK AT THIS LOCATION. MAINTAIN ALL EXISTING LIGHT FIXTURES AND CONTROL.
- RUN CIRCUIT THROUGH THE POWER CONTROL PANEL THEN TO PANEL DESIGNATION.

① 01 - FIRST FLOOR - PART - B  
3/32" = 1'-0"

Order Plans @ [www.perkinswill.com](http://www.perkinswill.com)