



PROJECT

**KIPP ATLANTA
COLLEGIATE - Addition
and Renovations**
98 Anderson Ave NW
Atlanta GA 30314

RELEASED FOR CONSTRUCTION 06/07/2019

KEYPLAN

ISSUE CHART

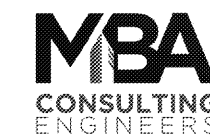
DATE	ISSUE	DATE
	Job Number	
	Drawn	BR
	Checked	MK
	Approved	SM
TITLE		

**ENLARGED PLUMBING
PLANS**

SHEET NUMBER

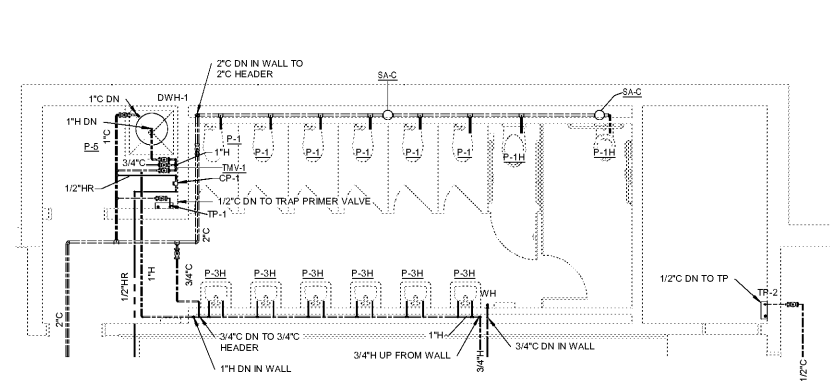
P40-01

Copyright © 2018 Perkins+Will

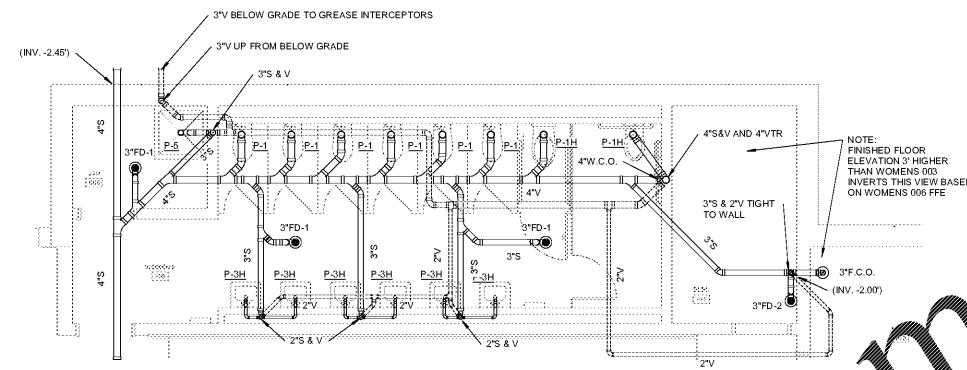


MBA# 19002

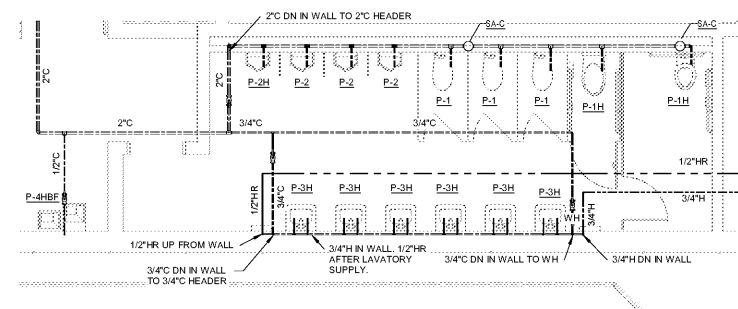
MATHEWSON BALL & ASSOCIATES, INC.
11288 ELKING RD. SUITE F-3
ROSWELL, GEORGIA 30076
PHONE: (770) 751-1072
WWW.MATHEWSONBALL.COM



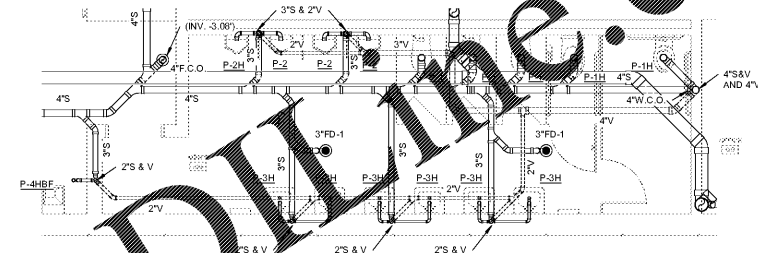
5 H&CW ENLARGED WOMENS 003, JAN 004 & MECH 010
1/4" = 1'-0"



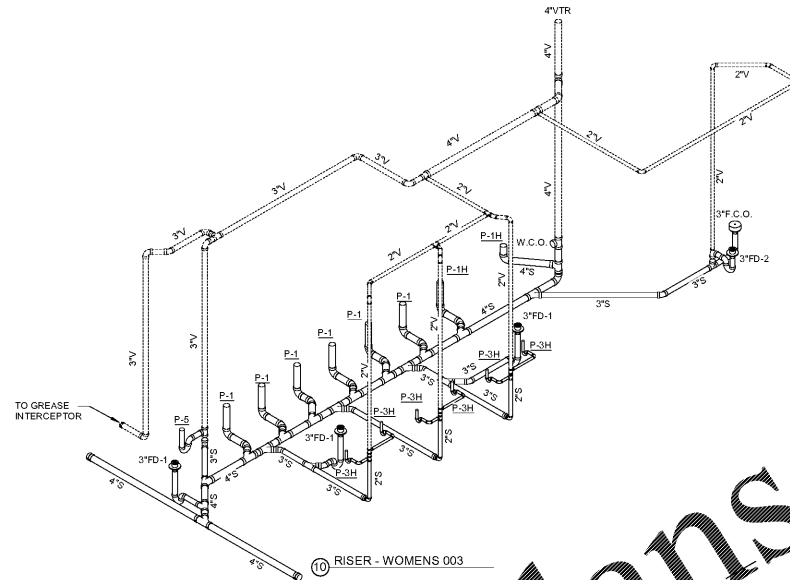
1 S.W&V ENLARGED WOMENS 003, JAN 004 & MECH 010
1/4" = 1'-0"



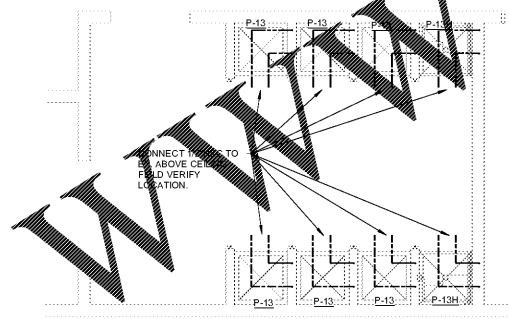
6 H&CW ENLARGED MENS 006 & STAGE / BAND-1
1/4" = 1'-0"



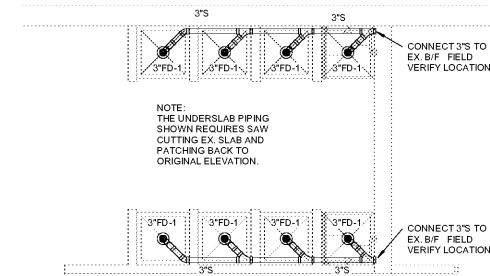
2 S.W&V ENLARGED MENS 006 & STAGE / BAND-1
1/4" = 1'-0"



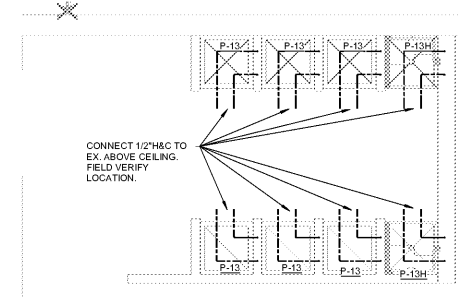
10 RISER - WOMENS 003



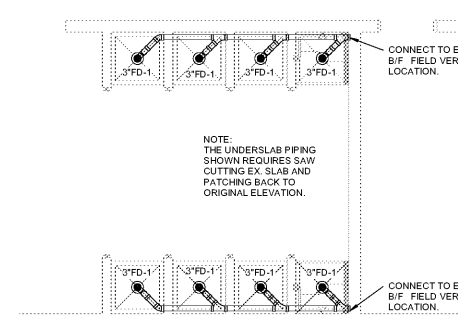
7 H&CW ENLARGED WOMENS SHOWER
1/4" = 1'-0"



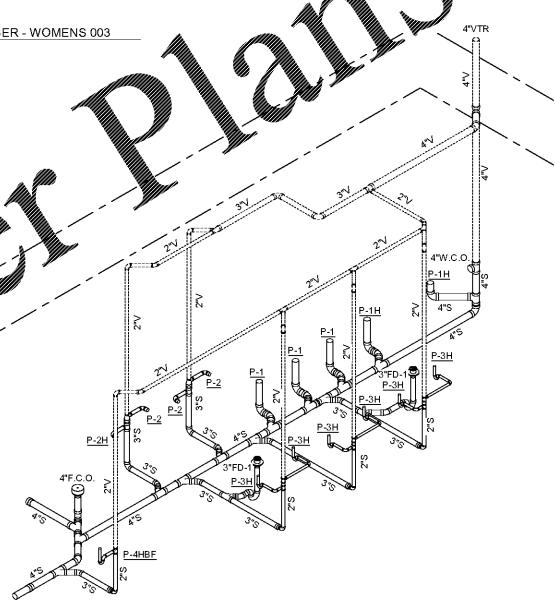
3 S.W&V ENLARGED WOMENS SHOWER
1/4" = 1'-0"



8 H&CW ENLARGED MENS SHOWER
1/4" = 1'-0"



4 S.W&V ENLARGED MENS SHOWER
1/4" = 1'-0"



9 RISER - MENS 006

Order Plans @

WWW.LDIDLINE.COM