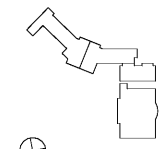




RELEASED FOR CONSTRUCTION 06/07/2019

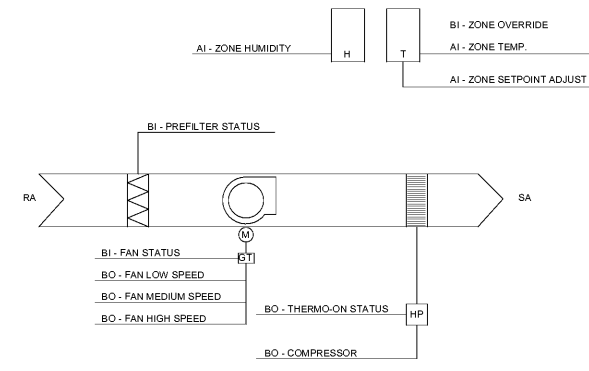
**KIPP ATLANTA
COLLEGIATE - Addition
and Renovations**



DATE	ISSUE	DATE
	Job Number	
	Drawn	MSK
	Checked	GC
	Approved	GC
	TITLE	

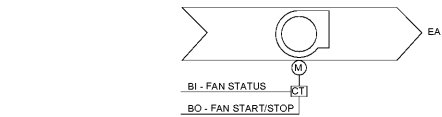
3 VRFC CONTROLS DETAIL
NONE

POINT NAME	HARDWARE POINTS				SOFTWARE POINTS				
	AI	AO	BI	BO	AV	BV	LOOP(SCHED)	TREND(ALARM)	SHOW ON GRAPHIC
ZONE TEMPERATURE	X						X		X
ZONE TEMP. SETPOINT							X		X
ZONE SETPOINT ADJUST	X						X		X
ZONE OVERRIDE			X				X		X
ZONE HUMIDITY	X						X		X
ZONE HUMIDITY SETPOINT							X		X
ZONE W.B. TEMPERATURE	X						X		X
ZONE W.B. TEMP. SETPOINT							X		X
FAN STATUS			X				X		X
FAN SPEED			X				X		X
OPERATION MODE			X				X		X
COMPRESSOR STATUS			X				X		X
PRE-FILTER STATUS	X						X		X
UNIT ALARM	X						X		X
SCHEDULE					X				X



4 EF CONTROLS DETAIL
NONE

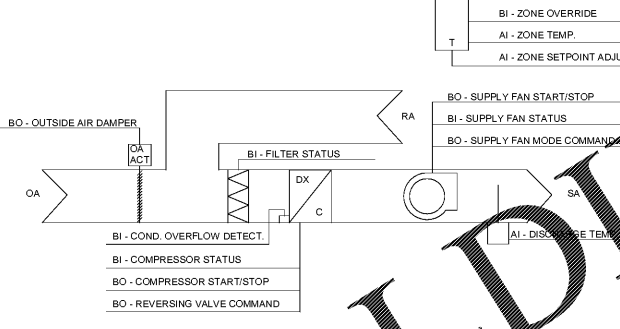
POINT NAME	HARDWARE POINTS				SOFTWARE POINTS				
	AI	AO	BI	BO	AV	BV	LOOP(SCHED)	TREND(ALARM)	SHOW ON GRAPHIC
FAN STATUS			X						X
FAN START/STOP			X						X
UNIT ALARM			X						X



OUTDOOR AIR TEMPERATURE AND HUMIDITY SENSOR SHALL BE COMMON EXTERIOR SENSOR FOR ALL EQUIPMENT REQUIRING OUTDOOR AIR SENSORS. COORDINATE WITH LOCATION OF SENSOR.

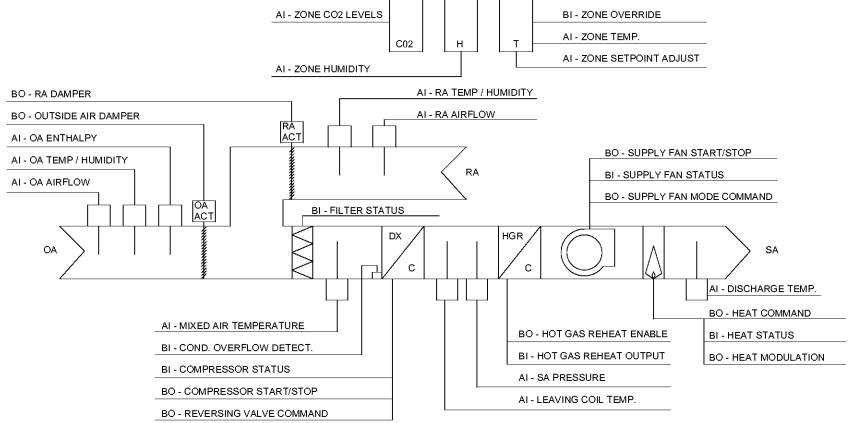
1 DS CONTROLS DETAIL
NONE

POINT NAME	HARDWARE POINTS				SOFTWARE POINTS				
	AI	AO	BI	BO	AV	BV	LOOP(SCHED)	TREND(ALARM)	SHOW ON GRAPHIC
OCCUPANCY							X		X
MODE (HEAT/COOL/DEHUM)							X		X
ZONE TEMPERATURE	X						X		X
ZONE TEMP. SETPOINT							X		X
ZONE SETPOINT ADJUST	X						X		X
ZONE OVERRIDE			X				X		X
OUTDOOR AIR DAMPER		X					X		X
O/A DAMPER MIN. POSITION			X				X		X
FILTER STATUS							X		X
COMPRESSOR STATUS			X				X		X
COMPRESSOR START/STOP			X				X		X
CONDENSATE OVERFLOW DETECT.			X				X		X
SUPPLY FAN START/STOP			X				X		X
SUPPLY FAN STATUS			X				X		X
SUPPLY FAN MODE COMMAND			X				X		X
DISCHARGE TEMPERATURE	X						X		X
ALARM							X		X
BAS COMMUNICATION STATE							X		X



2 RTU CONTROLS DETAIL
NONE

POINT NAME	HARDWARE POINTS				SOFTWARE POINTS				
	AI	AO	BI	BO	AV	BV	LOOP(SCHED)	TREND(ALARM)	SHOW ON GRAPHIC
OCCUPANCY							X		X
MODE (HEAT/COOL/DEHUM)							X		X
AIR FLOW SETPOINT							X		X
AIR FLOW							X		X
ZONE TEMPERATURE	X						X		X
ZONE TEMP. SETPOINT							X		X
ZONE SETPOINT ADJUST	X						X		X
ZONE OVERRIDE			X				X		X
ZONE HUMIDITY	X						X		X
ZONE HUMIDITY SETPOINT							X		X
ZONE CO2 LEVELS	X						X		X
ZONE CO2 SETPOINT							X		X
ZONE W.B. TEMPERATURE	X						X		X
ZONE W.B. TEMP. SETPOINT							X		X
OUTDOOR AIR TEMP/HUMIDITY	X						X		X
OUTDOOR AIR DAMPER			X				X		X
OUTDOOR AIR ENTHALPY	X						X		X
O/A DAMPER MIN. POSITION			X				X		X
RA DAMPER			X				X		X
RA TEMP/HUMIDITY	X						X		X
FILTER STATUS			X				X		X
MIXED AIR TEMPERATURE	X						X		X
COMPRESSOR STATUS			X				X		X
COMPRESSOR START/STOP			X				X		X
CONDENSATE OVERFLOW DETECT.			X				X		X
REVERSING VALVE COMMAND			X				X		X
LEAVING COIL TEMPERATURE	X						X		X
DUCT STATIC PRESSURE	X						X		X
DUCT STATIC PRESSURE SETPOINT			X				X		X
HOT GAS REHEAT ENABLE			X				X		X
HOT GAS REHEAT OUTPUT			X				X		X
SUPPLY FAN START/STOP			X				X		X
SUPPLY FAN STATUS			X				X		X
SUPPLY FAN MODE COMMAND			X				X		X
HEAT COMMAND			X				X		X
HEAT STATUS			X				X		X
HEAT MODULATION			X				X		X
DISCHARGE TEMPERATURE	X						X		X
NUMBER OF HEATING CALLS			X				X		X
NUMBER OF COOLING CALLS			X				X		X
LOW ZONE TEMPERATURE			X				X		X
ALARM			X				X		X
BAS COMMUNICATION STATE			X				X		X



Order Plans @

WWW.LDILine.com