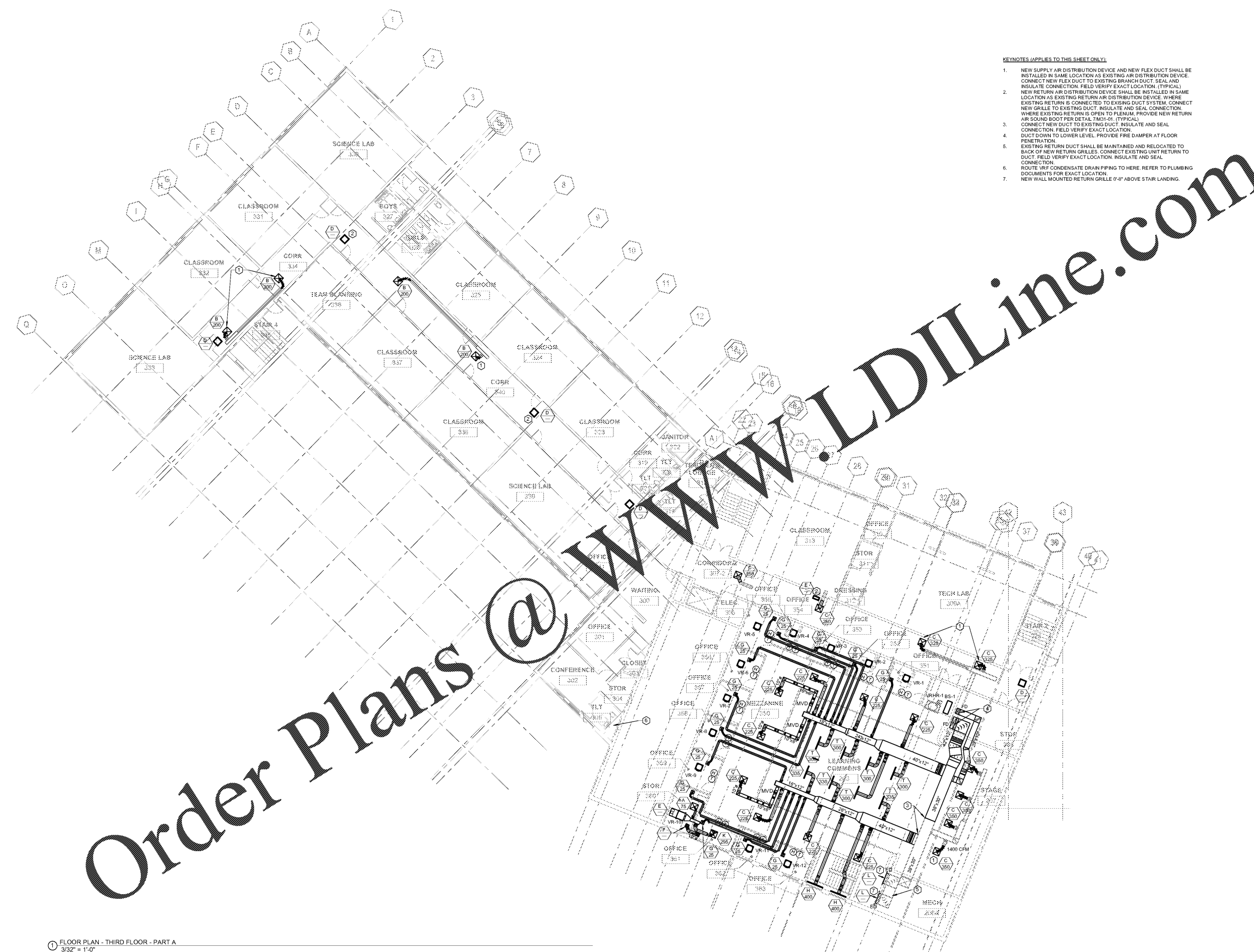


Order Plans @ www.WALDILine.com



- KEYNOTES (APPLIES TO THIS SHEET ONLY):**
1. NEW SUPPLY AIR DISTRIBUTION DEVICE AND NEW FLEX DUCT SHALL BE INSTALLED IN SAME LOCATION AS EXISTING AIR DISTRIBUTION DEVICE. CONNECT NEW FLEX DUCT TO EXISTING BRANCH DUCT. SEAL AND INSULATE CONNECTION. FIELD VERIFY EXACT LOCATION. (TYPICAL)
 2. NEW RETURN AIR DISTRIBUTION DEVICE SHALL BE INSTALLED IN SAME LOCATION AS EXISTING RETURN AIR DISTRIBUTION DEVICE. WHERE EXISTING RETURN IS CONNECTED TO EXISTING DUCT SYSTEM, CONNECT NEW GRILLE TO EXISTING DUCT. INSULATE AND SEAL CONNECTION. WHERE EXISTING RETURN IS OPEN TO PLENUM, PROVIDE NEW RETURN AIR SOUND BOOT PER DETAIL 7M01-01. (TYPICAL)
 3. CONNECT NEW DUCT TO EXISTING DUCT. INSULATE AND SEAL CONNECTION. FIELD VERIFY EXACT LOCATION.
 4. DUCT DOWN TO LOWER LEVEL. PROVIDE FIRE DAMPER AT FLOOR PENETRATION.
 5. EXISTING RETURN DUCT SHALL BE MAINTAINED AND RELOCATED TO BACK OF NEW RETURN GRILLES. CONNECT EXISTING UNIT RETURN TO DUCT. FIELD VERIFY EXACT LOCATION. INSULATE AND SEAL CONNECTION.
 6. ROUTE VRF CONDENSATE DRAIN PIPING TO HERE. REFER TO PLUMBING DOCUMENTS FOR EXACT LOCATION.
 7. NEW WALL MOUNTED RETURN GRILLE 0'-6" ABOVE STAIR LANDING.

1 FLOOR PLAN - THIRD FLOOR - PART A
3/32" = 1'-0"

**PERKINS
+ WILL**

1315 Peachtree St. NE
Atlanta, GA 30309
404.873.2300
404.822.5523
www.perkinswill.com

CONSULTANTS

ARCHITECT
Perkins+Will
15 Simpson St. NW, Atlanta, GA 30309

STRUCTURAL
Utzer-Case
1220 Peachtree St. NE, Suite 2500, Atlanta, GA 30309

MEP
Matheson Ball & Associates
11285 Elkins Rd., Suite F3, Roswell, GA 30076

LANDSCAPING
Perkins+Will
1315 Peachtree St. NE, Atlanta, GA 30309

KITCHEN
Camacho
3103 Medlock Bridge Road, Norcross, GA 30071

KIPP Metro Atlanta Schools 1448
Maynard Road, NW Atlanta, GA 30331

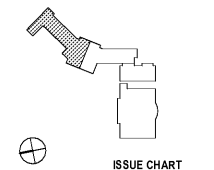
FACILITY
CONTRACTOR



PROJECT

**KIPP ATLANTA
COLLEGIATE - Addition
and Renovations**

KEYPLAN



ISSUE CHART

DATE	ISSUE	BY

**FLOOR PLAN - THIRD
FLOOR - PART A**

SHEET NUMBER

M11-03A

Copyright © 2018 Perkins+Will

MBA
CONSULTING
ENGINEERS

MBA # 19002
MATHESON BALL & ASSOCIATES, INC.
11285 ELKINS RD., SUITE F3
ROSWELL, GEORGIA 30076
PHONE: (770) 761-1073
WWW.MATHESONBALL.COM