

CONSULTANTS

ARCH
Breedlove Land Planning
15 Simpson St NW, Atlanta, GA 30309

STRUCTURAL
Uzun-Cisse
1220 Peachtree St NE, Suite 2500, Atlanta, GA 30309

MEP
Matheson Ball & Associates
11285 Elkins Rd., Suite F3, Roswell, GA 30076

LANDSCAPING
Perkins+Will
1315 Peachtree St NE, Atlanta, GA 30309

KITCHEN
Camacho
3103 Medlock Bridge Road, Norcross, GA 30071

KIPP Metro Atlanta Schools 1448
Maynard Road, NW Atlanta, GA 30331

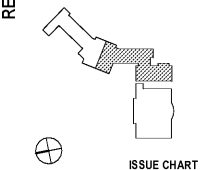
FACILITY
CONTRACTOR



RELEASED FOR CONSTRUCTION 06/07/2019

**KIPP ATLANTA
COLLEGIATE - Addition
and Renovations**

KEYPLAN



ISSUE CHART

DATE	ISSUE	DATE
	Job Number	
	Drawn	MSK
	Checked	GC
	Approved	GC

**FLOOR PLAN -
SECOND FLOOR -
PART B**

SHEET NUMBER

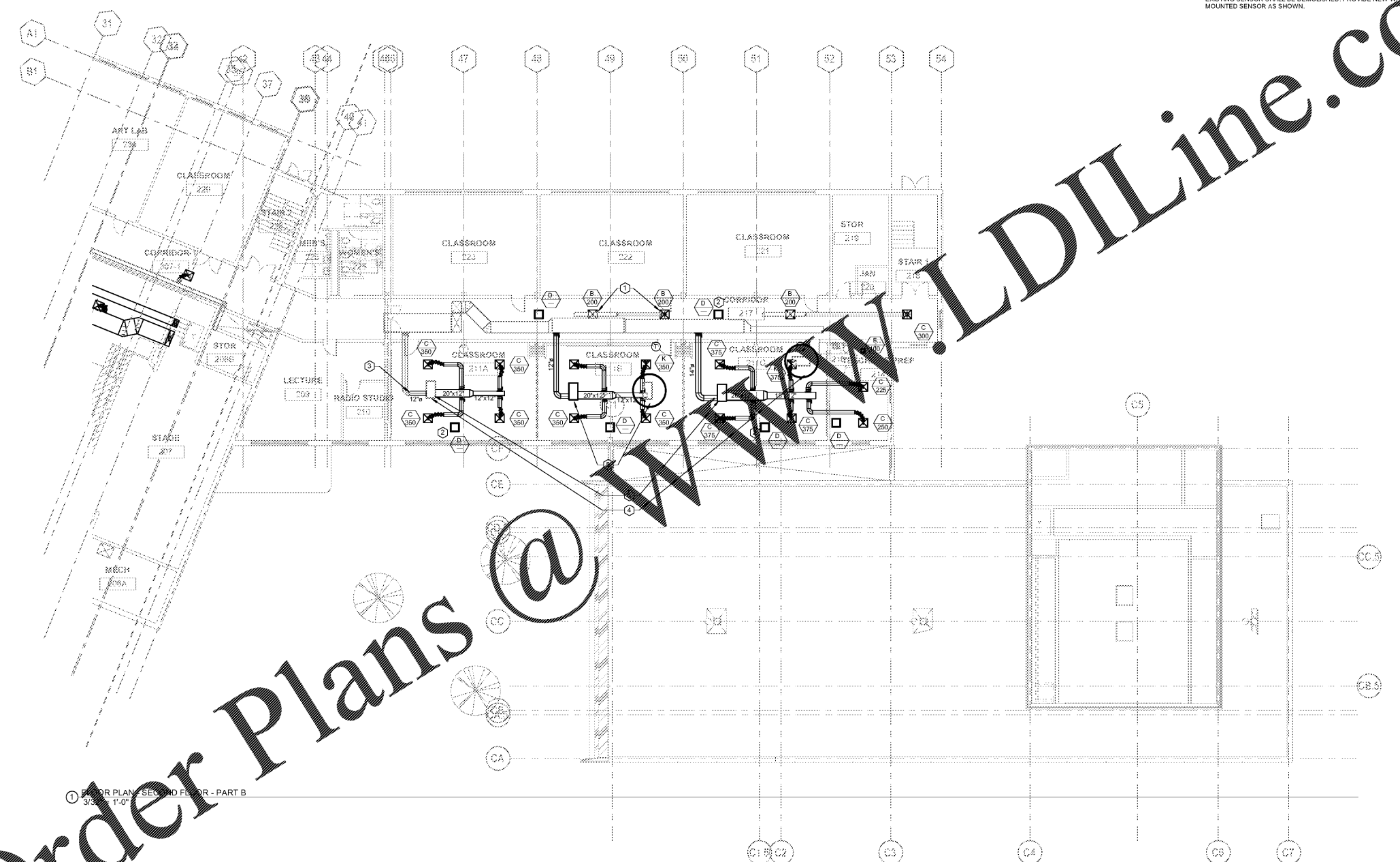
M11-02B

Copyright © 2018 Perkins+Will

EXISTING UNIT SHALL REMAIN FOR REUSE. BALANCE UNIT TO CFMs SHOWN.
CONTRACTOR SHALL EXAMINE UNIT FOR ANY DAMAGE TO UNIT OR ASSOCIATED PIPING,
DUCT, DRAIN PAN, INSULATION, ETC. DAMAGE SHALL BE REPAIRED PRIOR TO UNIT BEING
REUSED. (TYPICAL)

KEYNOTES (APPLIES TO THIS SHEET ONLY):

- NEW SUPPLY AIR DISTRIBUTION DEVICE AND NEW FLEX DUCT SHALL BE INSTALLED IN SAME LOCATION AS EXISTING AIR DISTRIBUTION DEVICE. CONNECT NEW FLEX DUCT TO EXISTING BRANCH DUCT. SEAL AND INSULATE CONNECTION. FIELD VERIFY EXACT LOCATION. (TYPICAL)
- NEW RETURN AIR DISTRIBUTION DEVICE SHALL BE INSTALLED IN SAME LOCATION AS EXISTING RETURN AIR DISTRIBUTION DEVICE. WHERE EXISTING RETURN IS CONNECTED TO EXISTING DUCT SYSTEM, CONNECT NEW GRILLE TO EXISTING DUCT. INSULATE AND SEAL CONNECTION. WHERE EXISTING RETURN IS OPEN TO PLENUM, PROVIDE NEW RETURN AIR SOUND BOOT PER DETAIL 7M31-01. (TYPICAL)
- CONNECT NEW DUCT TO EXISTING DUCT. INSULATE AND SEAL CONNECTION. FIELD VERIFY EXACT LOCATION.
- EXISTING UNIT FURTHEST RIGHT ON PLANS SHALL BE RELOCATED TO HERE. CONNECT NEW 12" DUCT TO UNIT AS SHOWN. CONNECT EXISTING 1-1/4" PIPING TO UNIT. TRANSITION TO UNIT CONNECTION SIZE AT UNIT. EXISTING WALL MOUNTED SENSOR SHALL BE MAINTAINED.
- EXISTING UNIT SHALL BE RELOCATED TO HERE. CONNECT NEW 12" DUCT TO UNIT AS SHOWN. ROUTE EXISTING PIPING TO UNIT SAME SIZE AS EXISTING. EXISTING SENSOR SHALL BE DEMOLISHED. PROVIDE NEW WALL MOUNTED SENSOR AS SHOWN.
- EXISTING UNIT FURTHEST LEFT ON PLANS SHALL BE RELOCATED TO HERE. CONNECT NEW 14" DUCT TO UNIT AS SHOWN. CONNECT NEW 1-1/4" PIPING TO UNIT. ROUTE NEW 1-1/4" PIPING TO MAIN AND CONNECT EXISTING SENSOR SHALL BE DEMOLISHED. PROVIDE NEW WALL MOUNTED SENSOR AS SHOWN.



1 FLOOR PLAN - SECOND FLOOR - PART B
3/2 11'-0"

Order Plans @

WWW.LDILine.com