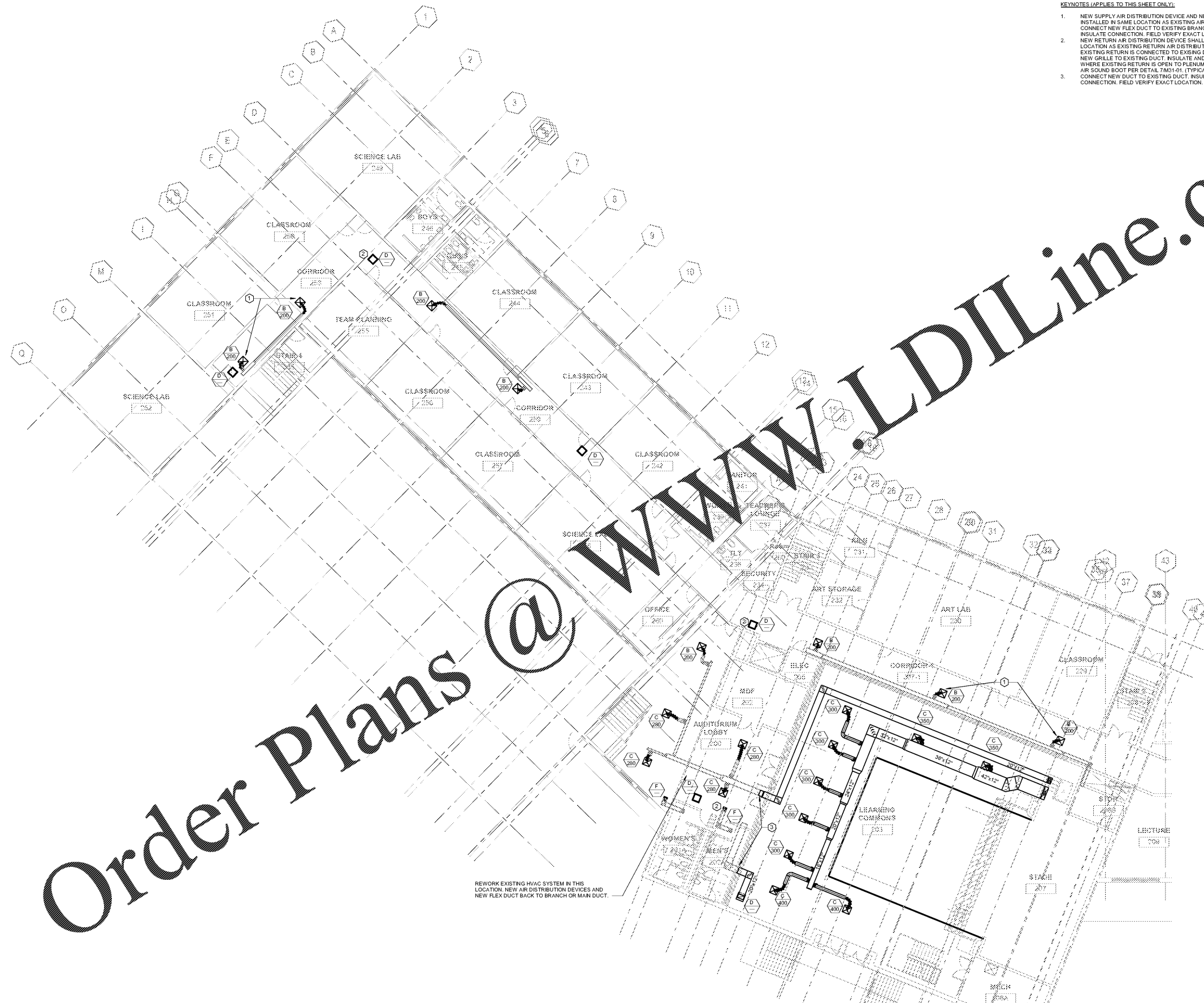


Order Plans @

WWW.LDILine.com



REWORK EXISTING HVAC SYSTEM IN THIS LOCATION. NEW AIR DISTRIBUTION DEVICES AND NEW FLEX DUCT BACK TO BRANCH OR MAIN DUCT.

- KEYNOTES (APPLIES TO THIS SHEET ONLY):
1. NEW SUPPLY AIR DISTRIBUTION DEVICE AND NEW FLEX DUCT SHALL BE INSTALLED IN SAME LOCATION AS EXISTING AIR DISTRIBUTION DEVICE. CONNECT NEW FLEX DUCT TO EXISTING BRANCH DUCT. SEAL AND INSULATE CONNECTION. FIELD VERIFY EXACT LOCATION. (TYPICAL)
 2. NEW RETURN AIR DISTRIBUTION DEVICE SHALL BE INSTALLED IN SAME LOCATION AS EXISTING RETURN AIR DISTRIBUTION DEVICE. WHERE EXISTING RETURN IS CONNECTED TO EXISTING DUCT SYSTEM, CONNECT NEW GRILLE TO EXISTING DUCT. INSULATE AND SEAL CONNECTION. WHERE EXISTING RETURN IS OPEN TO PLENUM, PROVIDE NEW RETURN AIR SOUND BOOT PER DETAIL 7M31-01. (TYPICAL)
 3. CONNECT NEW DUCT TO EXISTING DUCT. INSULATE AND SEAL CONNECTION. FIELD VERIFY EXACT LOCATION.

PERKINS + WILL

1315 Peachtree St NE
Atlanta, GA 30309
404.873.2300
404.952.5523
www.perkinswill.com

CONSULTANTS

- ARCHITECT
Breedlove Land Planning
15 Simpson St NW, Atlanta, GA 30309
- STRUCTURAL
Uzun+Case
1220 Peachtree St NE, Suite 2500, Atlanta, GA 30309
- MEP
Matheson Ball & Associates
11285 Elkins Rd., Suite F3, Roswell, GA 30076
- LANDSCAPING
Perkins+Will
1315 Peachtree St NE, Atlanta, GA 30309
- KITCHEN
Camacho
3103 Medlock Bridge Road, Norcross, GA 30071

KIPP Metro Atlanta Schools 1448
Maynard Road, NW Atlanta, GA 30331

FACILITY
CONTRACTOR

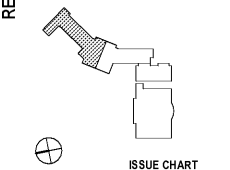


PROJECT

KIPP ATLANTA
COLLEGIATE - Addition
and Renovations

RELEASED FOR CONSTRUCTION 06/07/2019

KEYPLAN



ISSUE CHART

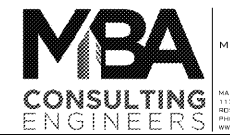
DATE	ISSUE	DATE

FLOOR PLAN - SECOND FLOOR - PART A

SHEET NUMBER

M11-02A

FLOOR PLAN - SECOND FLOOR - PART A
3/32" = 1'-0"



MBA # 19002
MATHESON BALL & ASSOCIATES, INC.
11285 ELKINS RD., SUITE F3
ROSWELL, GEORGIA 30076
PHONE: (770) 761-1073
WWW.MATHESONBALL.COM

Copyright © 2019 Perkins+Will