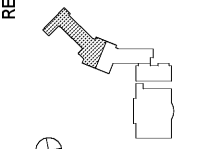




**KIPP ATLANTA
COLLEGIATE - Addition
and Renovations**

RELEASED FOR CONSTRUCTION 06/07/2019

KEYPLAN



ISSUE CHART

DATE	ISSUE	DATE
	Job Number	
	Drawn	MSK
	Checked	GC
	Approved	GC

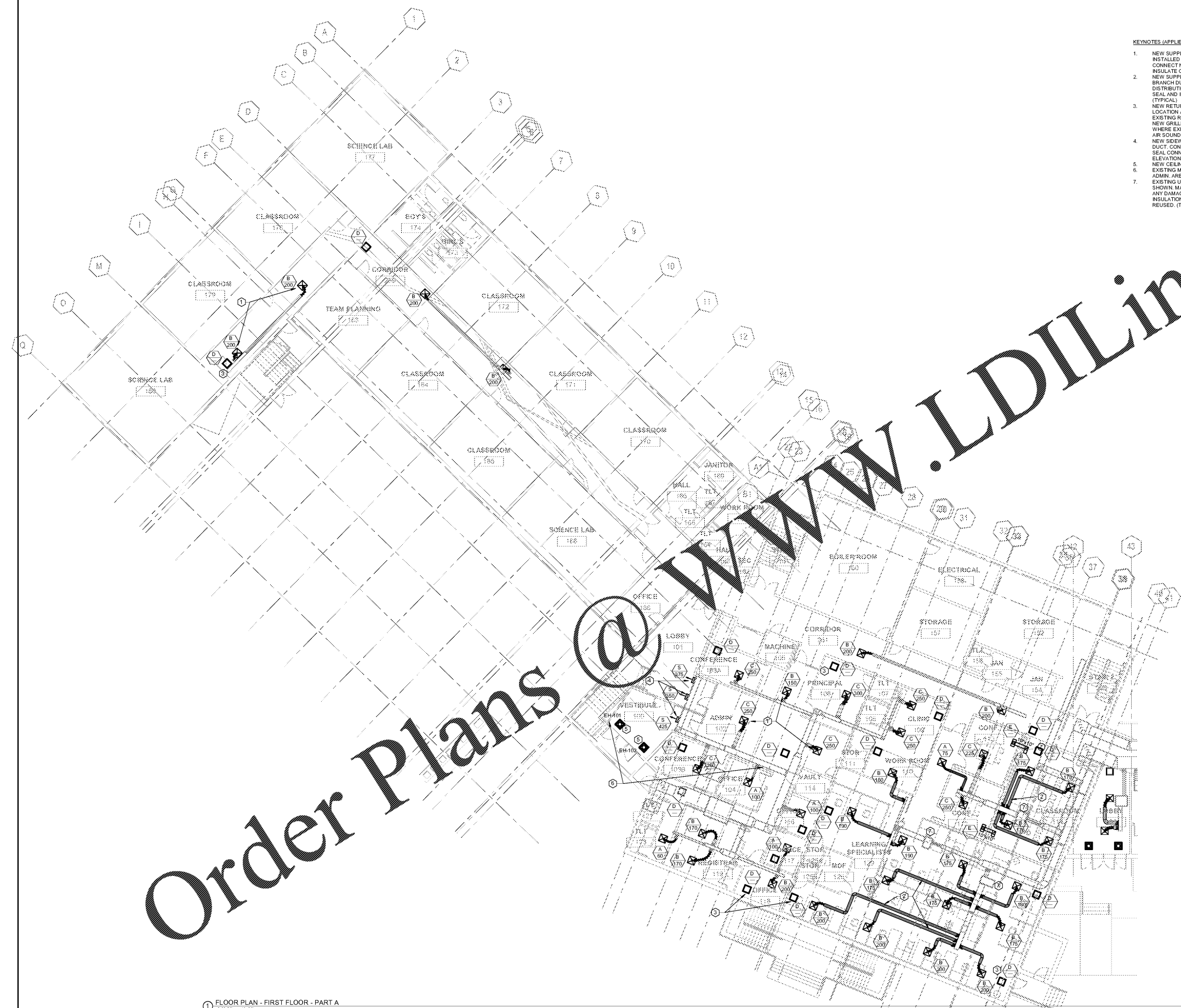
**FLOOR PLAN - FIRST
FLOOR - PART A**

SHEET NUMBER

M11-01A

KEYNOTES (APPLIES TO THIS SHEET ONLY):

1. NEW SUPPLY AIR DISTRIBUTION DEVICE AND NEW FLEX DUCT SHALL BE INSTALLED IN SAME LOCATION AS EXISTING AIR DISTRIBUTION DEVICE. CONNECT NEW FLEX DUCT TO EXISTING BRANCH DUCT. SEAL AND INSULATE CONNECTION. FIELD VERIFY EXACT LOCATION. (TYPICAL)
2. NEW SUPPLY AIR DISTRIBUTION DEVICE, NEW FLEX DUCT, AND NEW BRANCH DUCT SHALL BE INSTALLED IN SAME LOCATION AS EXISTING AIR DISTRIBUTION DEVICE. CONNECT NEW BRANCH DUCT TO EXISTING DUCT. SEAL AND INSULATE CONNECTION. FIELD VERIFY EXACT LOCATION. (TYPICAL)
3. NEW RETURN AIR DISTRIBUTION DEVICE SHALL BE INSTALLED IN SAME LOCATION AS EXISTING RETURN AIR DISTRIBUTION DEVICE. WHERE EXISTING RETURN IS CONNECTED TO EXISTING DUCT SYSTEM, CONNECT NEW GRILLE TO EXISTING DUCT. INSULATE AND SEAL CONNECTION. WHERE EXISTING RETURN IS OPEN TO PLENUM, PROVIDE NEW RETURN AIR SOUND BOOT PER DETAIL 7M31-01. (TYPICAL)
4. NEW SIDEWALL SUPPLY AIR DISTRIBUTION DEVICE WITH NEW BRANCH DUCT. CONNECT NEW BRANCH DUCT TO EXISTING DUCT. INSULATE AND SEAL CONNECTION. NEW GRILLES SHALL BE MOUNTED AT SAME ELEVATION AS EXISTING GRILLES.
5. NEW CEILING HEATERS IN SAME LOCATION AS EXISTING HEATERS. EXISTING MECHANICAL CONTROLS SHALL BE RELOCATED INTO THE ADMIN. AREA AS SHOWN.
6. EXISTING UNIT SHALL REMAIN FOR REUSE. BALANCE UNIT TO CFM AS SHOWN. MAINTAIN CONTROLS. CONTRACTOR SHALL EXAMINE UNIT FOR ANY DAMAGE TO UNIT OR ASSOCIATED PIPING, DUCT, OR PLENUM INSULATION, ETC. DAMAGE SHALL BE REPAIRED PRIOR TO UNIT BEING REUSED. (TYPICAL)



Order Plans @

1 FLOOR PLAN - FIRST FLOOR - PART A
3/32" = 1'-0"

