

CONSULTANTS

civil
Breslowe Land Planning
15 Simpson St NW, Atlanta, GA 30308

structural
Lizah-Cade
1230 Peachtree St. NE, Suite 2500 Atlanta, GA 30309

MEP
Matheson Ball & Associates
11285 Elkins Rd., Suite F3, Roswell, GA 30076

LANDSCAPING
Perkins+Will
1315 Peachtree St. NE, Atlanta, GA 30309

Camacho
3103 Medock Bridge Road, Norcross, GA 30071

OWNER
KIPP Metro Atlanta Schools
1445 Maynard Road NW, Atlanta, GA 30331

ARCHIT

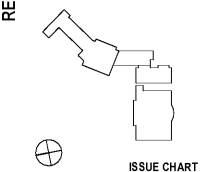
CONTRACTOR

PROJECT

**KIPP ATLANTA
COLLEGIATE - Addition
and Renovations**
98 Anderson Ave NW
Atlanta GA 30314

RELEASED FOR CONSTRUCTION 06/07/2019

KEYPLAN



ISSUE CHART



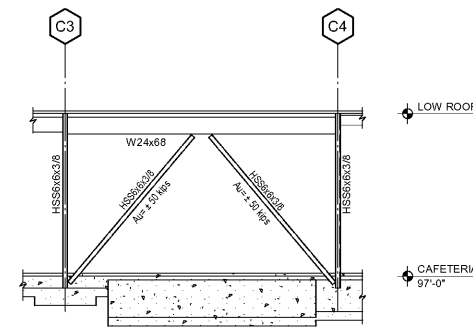
DATE	ISSUE	DATE
18220		
ZZ		
SG		
JH		

**BRACED FRAME
ELEVATIONS**

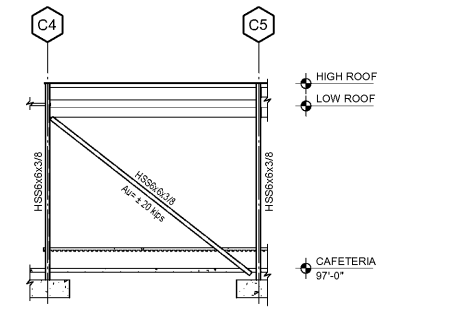
SHEET NUMBER

S30-02

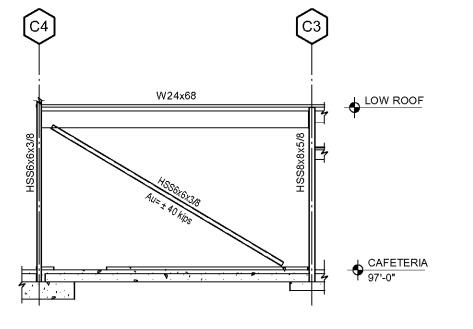
Copyright © 2018 Perkins+Will



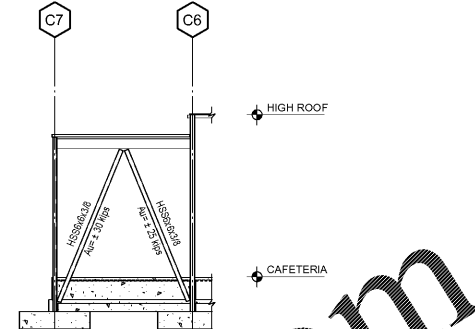
1 SOUTH BRACE FRAME ELEVATION AT GRID CA
S30-02 SCALE: 1/8" = 1'-0"



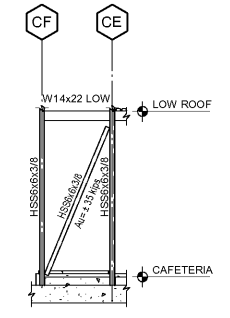
2 SOUTH BRACE FRAME ELEVATION AT GRID CB
S30-02 SCALE: 1/8" = 1'-0"



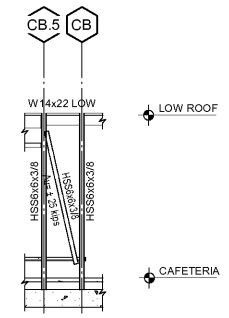
3 NORTH BRACE FRAME ELEVATION AT GRID CE
S30-02 SCALE: 1/8" = 1'-0"



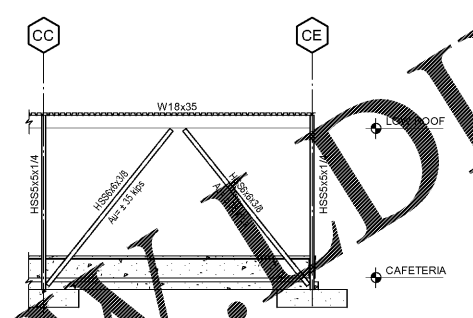
4 NORTH BRACE FRAME ELEVATION 2 AT GRID CE
S30-02 SCALE: 1/8" = 1'-0"



5 WEST BRACE FRAME ELEVATION AT GRID C4
S30-02 SCALE: 1/8" = 1'-0"



6 WEST BRACE FRAME ELEVATION 2 AT GRID C4
S30-02 SCALE: 1/8" = 1'-0"



7 EAST BRACE FRAME ELEVATION AT GRID C6
S30-02 SCALE: 1/8" = 1'-0"

Order Plans @ www.DIline.com