

CONSULTANTS

civil
Breslove Land Planning
15 Simpson St NW, Atlanta, GA 30308

STRUCTURAL
Lujan-Cobb
1230 Peachtree St. NE, Suite 2500 Atlanta, GA 30309

MEP
Matheson Ball & Associates
11285 Elkins Rd., Suite F3, Roswell, GA 30076

LANDSCAPING
Perkins+Will
1315 Peachtree St. NE, Atlanta, GA 30309

ARCHITECT
Camacho
3103 Medlock Bridge Road, Norcross, GA 30071

OWNER
KIPP Metro Atlanta Schools
1445 Maynard Road NW, Atlanta, GA 30331

PLACER

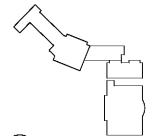
CONTRACTOR

PROJECT

**KIPP ATLANTA
COLLEGIATE - Addition
and Renovations**
98 Anderson Ave NW
Atlanta GA 30314

RELEASED FOR CONSTRUCTION 06/07/2019

KEYPLAN



ISSUE CHART



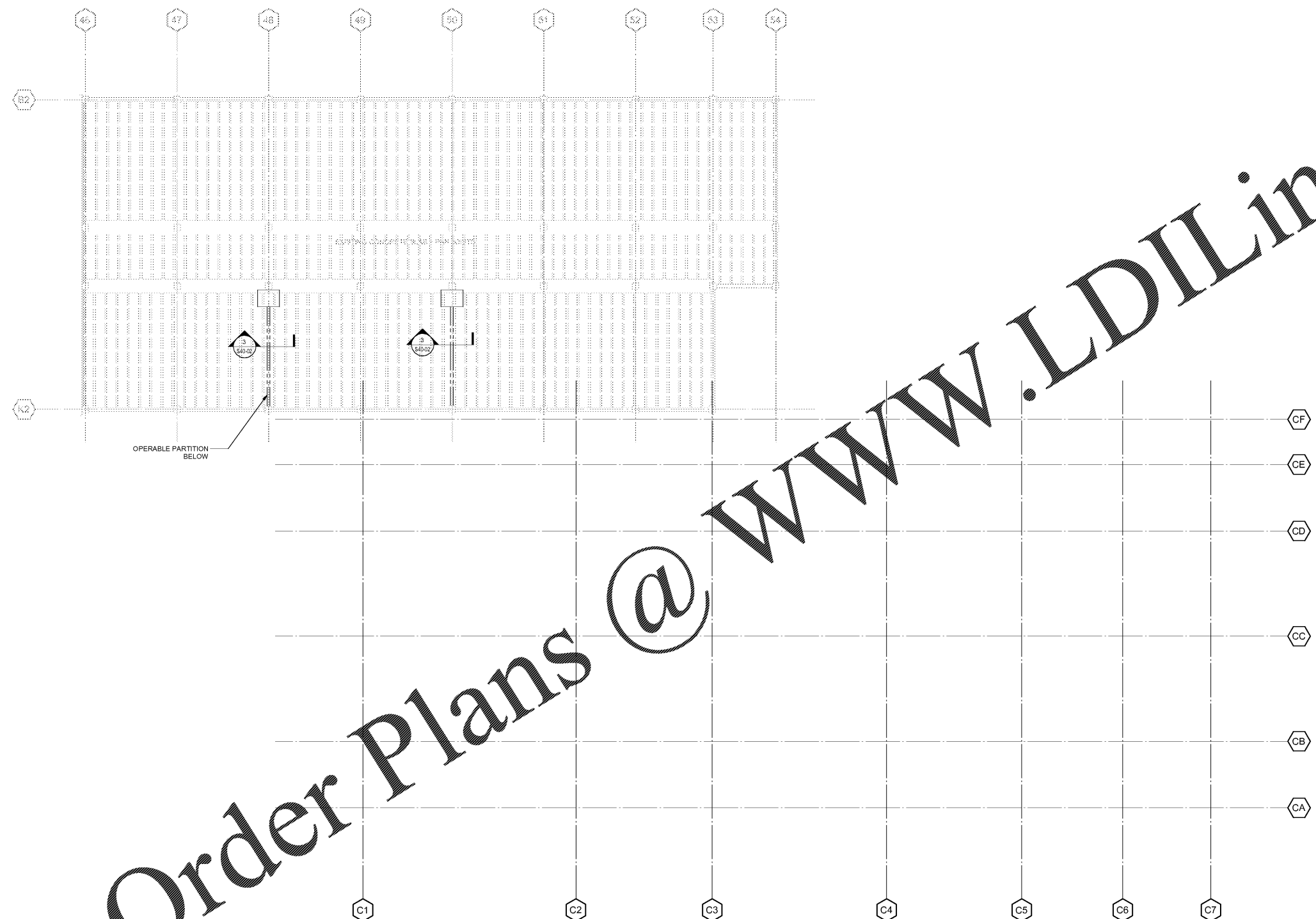
DATE	ISSUE	BY
18220		
SG	Drawn	
SG	Checked	
JH	Approved	

TITLE

**CLASSROOM ROOF
FRAMING PLAN - PART
B**

SHEET NUMBER

S11-03B



Order Plans @ WWW.LDILine.com

1 CLASSROOM ROOF FRAMING PLAN - PART B
S11-03B SCALE: 1/8" = 1'-0"