

CONSULTANTS

civil
Bioscience Land Planning
15 Simpson St NW, Atlanta, GA 30308

STRUCTURAL
Lizah-Cobb
1230 Peachtree St. NE, Suite 2500 Atlanta, GA 30309

MEP
Matheson Ball & Associates
11285 Elkins Rd., Suite F3, Roswell, GA 30076

LANDSCAPING
Perkins+Will
1315 Peachtree St. NE, Atlanta, GA 30309

CONTRACTOR
Camacho
3103 Medlock Bridge Road, Norcross, GA 30071

OWNER
KIPP Metro Atlanta Schools
1445 Maynard Road NW, Atlanta, GA 30331

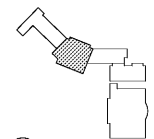
ARCHITECT

CONTRACTOR

PROJECT

**KIPP ATLANTA
COLLEGIATE - Addition
and Renovations**
98 Anderson Ave NW
Atlanta GA 30314

KEYPLAN



ISSUE CHART

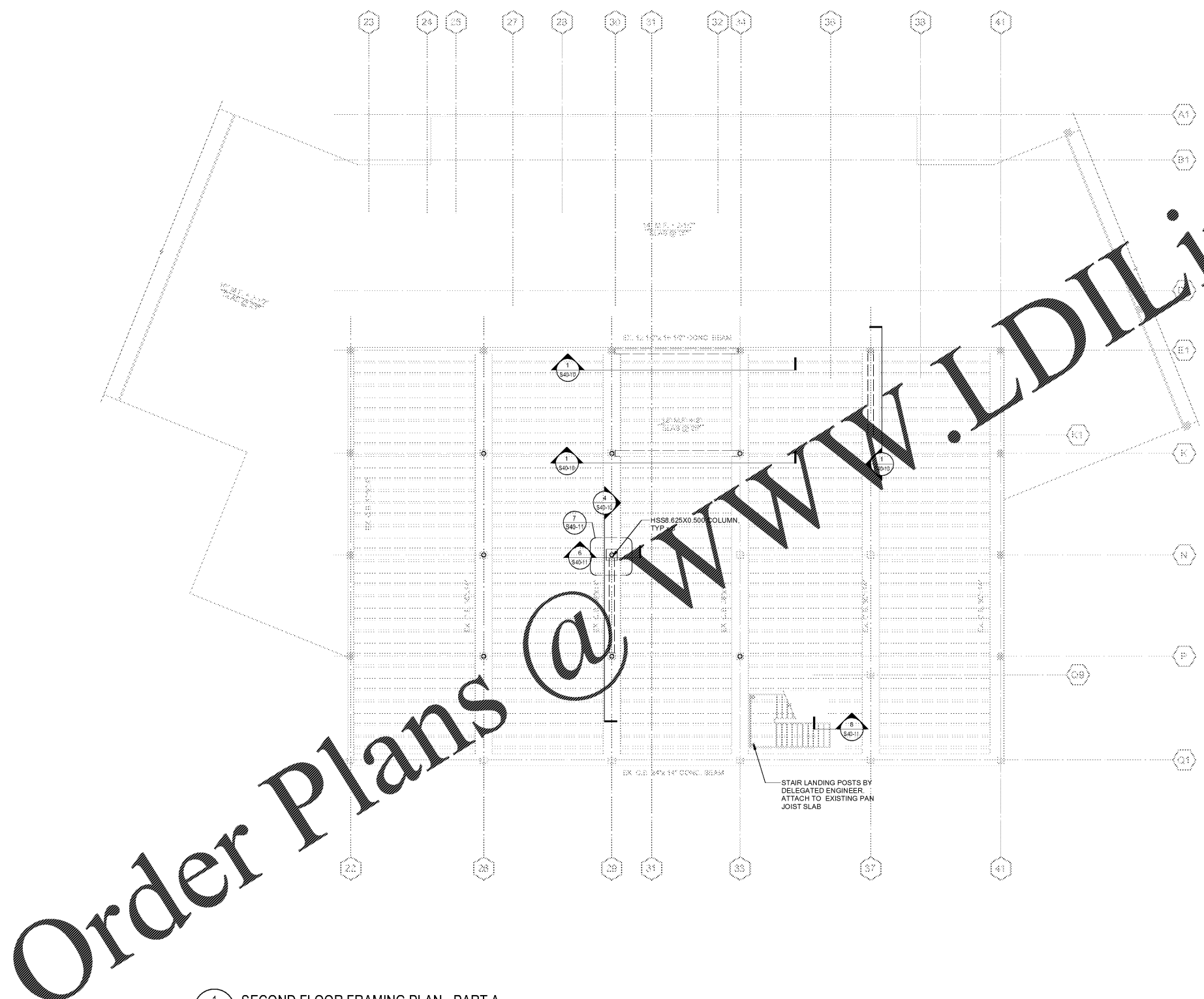


DATE	ISSUE	DATE
18220		
SG		
SG		
JH		

**SECOND FLOOR
FRAMING PLAN - PART
A**

SHEET NUMBER

S11-02A



1 SECOND FLOOR FRAMING PLAN - PART A
S11-02A SCALE: 1/8" = 1'-0"

Order Plans @ www.LDILine.com