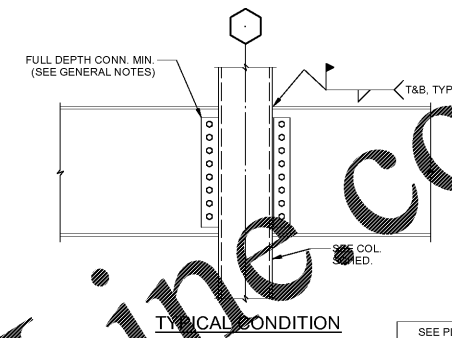
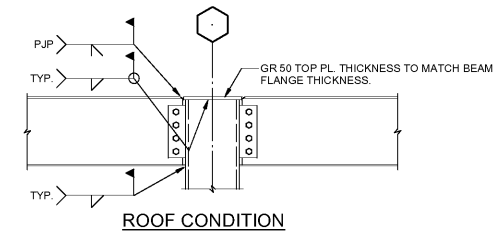
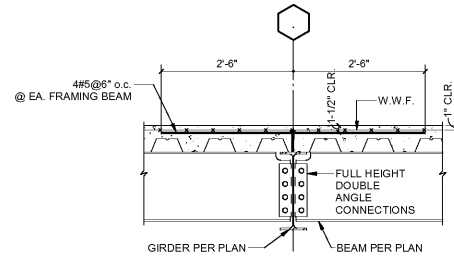
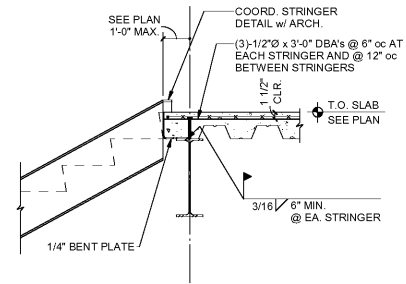


NOTES:  
 1. (1) REFERS TO POUR SEQUENCE  
 2. CONTINUE SLAB REINF. THROUGH CONSTRUCTION JOINTS



SEE PLAN FOR LRFD FACTORED DESIGN FORCES

1 TYPICAL DETAIL AT COMPOSITE FLOOR CONSTRUCTION JOINT  
 S01-04 SCALE: 3/4" = 1'-0"

2 TYPICAL DETAIL AT STAIR  
 S01-04 SCALE: 3/4" = 1'-0"

3 TYPICAL DETAIL AT GIRDER  
 S01-04 SCALE: 3/4" = 1'-0"

4 TYPICAL BEAM TO HSS SQUARE OR ROUND COLUMN MOMENT CONNECTION  
 S01-04 SCALE: 3/4" = 1'-0"

Order Plans @ www.LDOnline.com

PERKINS + WILL

1315 Peachtree St NE  
 Atlanta, GA 30309  
 404.873.2300  
 404.873.2932  
 www.perkinswill.com

CONSULTANTS

civil  
 Bradlove Land Planning  
 15 Simpson St NW, Atlanta, GA 30308

structural  
 Uzun-Cable  
 1230 Peachtree St. NE, Suite 2500 Atlanta, GA 30309

MEP  
 Matheson Ball & Associates  
 11285 Elkins Rd., Suite F3, Roswell, GA 30076

LANDSCAPING  
 Perkins+Will  
 1315 Peachtree St. NE, Atlanta, GA 30309

Civil/Arch  
 3103 Medlock Bridge Road, Norcross, GA 30071

OWNER  
 KIPP Metro Atlanta Schools  
 1445 Maynard Road NW, Atlanta, GA 30331

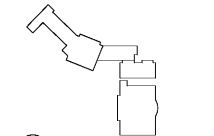
ARCHITECT

CONTRACTOR

PROJECT

KIPP ATLANTA COLLEGIATE - Addition and Renovations  
 98 Anderson Ave NW  
 Atlanta GA 30314

KEYPLAN



ISSUE CHART



| DATE       | ISSUE | DATE |
|------------|-------|------|
| Job Number | 18220 |      |
| Drawn      | ZZ    |      |
| Checked    | SG    |      |
| Approved   | JH    |      |

TYPICAL DETAILS

SHEET NUMBER

S01-04