

** REFER TO A41-01 FOR INTERIOR FINISHES AND INTERIOR ELEVATION NOTES

**PERKINS
+ WILL**

1315 Peachtree St NE
Atlanta, GA 30309
T 404.873.2500
F 404.873.2522
www.perkinswill.com

CONSULTANTS

CIVIL
Breadlove Land Planning
15 Simpson St NW, Atlanta, GA 30308

STRUCTURAL
Lizari-Care
1200 Peachtree St. NE, Suite 2500, Atlanta, GA 30309

MEP
Matheson Ball & Associates
11285 Elkins Rd., Suite F3, Roswell, GA 30076

LANDSCAPING
Perkins+Wili
1315 Peachtree St. NE, Atlanta, GA 30309

PAVING
Camacho
3103 Medlock Bridge Road, Norcross, GA 30071

OWNER
KIPP Metro Atlanta Schools
1445 Maynard Road NW, Atlanta, GA 30331

FACILITY

CONTRACTOR

PROJECT

**KIPP ATLANTA
COLLEGIATE - Addition
and Renovations**
98 Anderson Ave NW
Atlanta GA 30314

RELEASED FOR CONSTRUCTION 06/07/2019

STATE OF GEORGIA
REGISTERED PROFESSIONAL ARCHITECT
No. 10000

KEYPLAN

ISSUE CHART

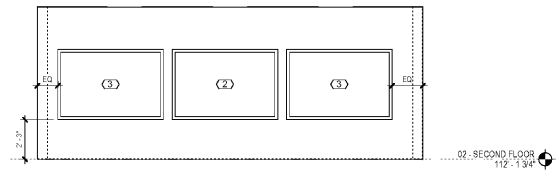
DATE	DESCRIPTION	DATE
07/2019	Job Number	801660.000
	Drawn	Author
	Checked	Checker
	Approved	Approver
	TITLE	

INTERIOR ELEVATIONS

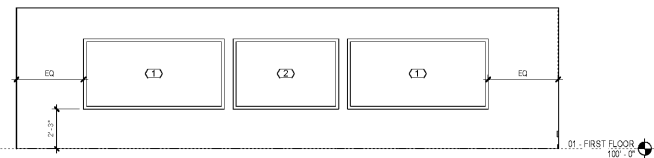
SHEET NUMBER

A45-02

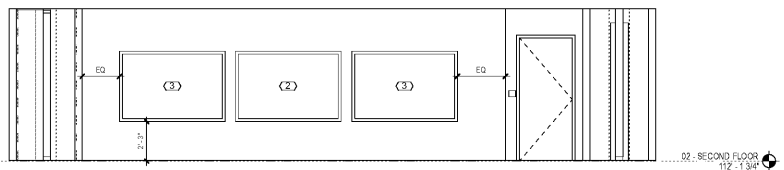
Copyright © 2019 Perkins+Wili



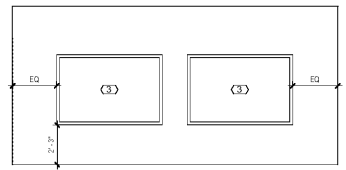
11 CLASSROOM 211 TEACHING WALL 1
1/4" = 1'-0"



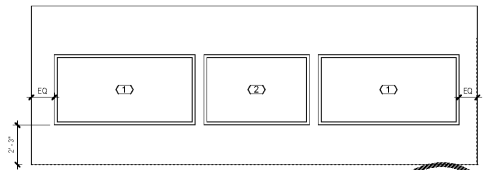
10 CLASSROOM 114 TEACHING WALL
1/4" = 1'-0"



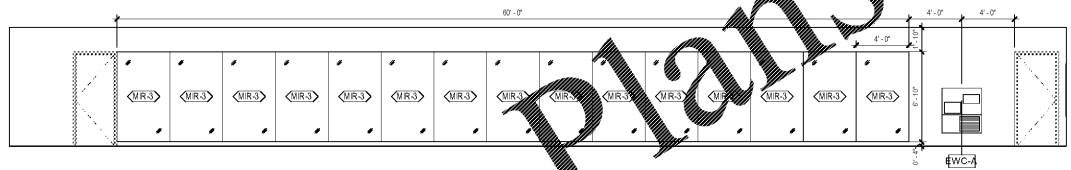
8 CLASSROOM 211 TEACHING WALL 2
1/4" = 1'-0"



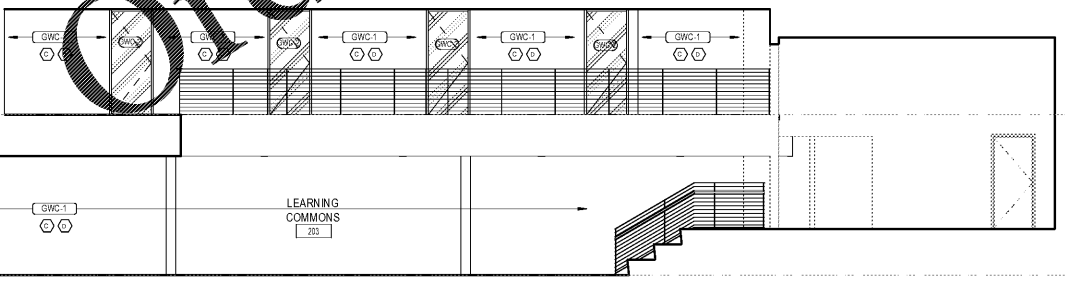
7 WEIGHT ROOM TEACHING WALL
1/4" = 1'-0"



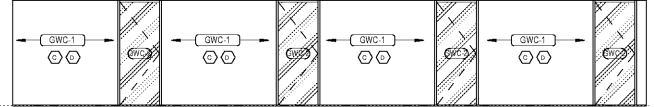
6 CLASSROOM G06 + G49 TEACHING WALL
1/4" = 1'-0"



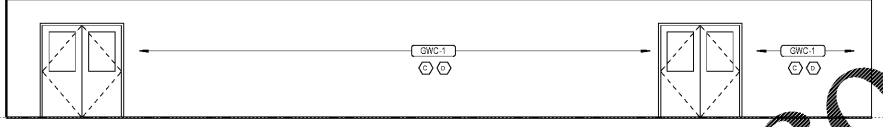
4 WEIGHT ROOM MIRRORS
3/16" = 1'-0"



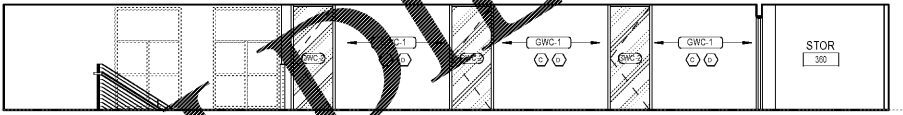
2 INTERIOR ELEVATION
3/16" = 1'-0"



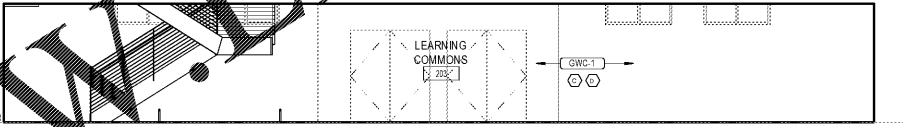
9 INTERIOR ELEVATION
3/16" = 1'-0"



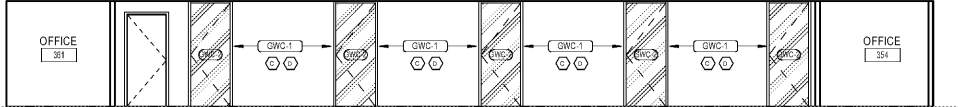
5 INTERIOR ELEVATION
3/16" = 1'-0"



3 INTERIOR ELEVATION
3/16" = 1'-0"



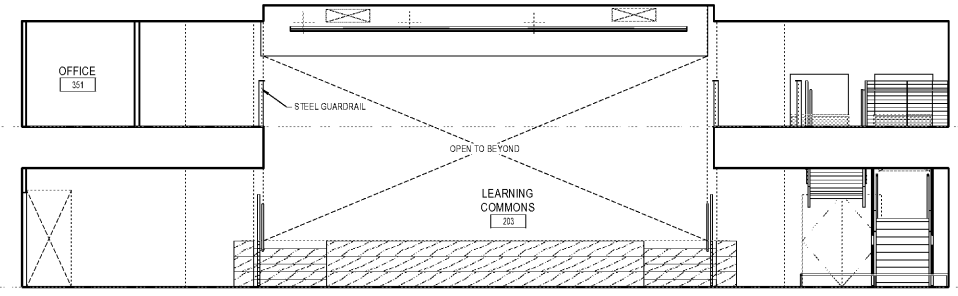
1 INTERIOR ELEVATION
3/16" = 1'-0"



3 INTERIOR ELEVATION
3/16" = 1'-0"



1 INTERIOR ELEVATION
3/16" = 1'-0"



1 INTERIOR ELEVATION
3/16" = 1'-0"

WWW.DILine.com

Order plans @