

CONSULTANTS

CIVIL
Breadlove Land Planning
15 Simpson St NW, Atlanta, GA 30308

STRUCTURAL
Uzun-Cobb
1200 Peachtree St. NE, Suite 2500, Atlanta, GA 30309

MEP
Matheson Ball & Associates
11285 Elkins Rd., Suite F3, Roswell, GA 30076

LANDSCAPING
Perkins+WILL
1315 Peachtree St. NE, Atlanta, GA 30309

FF&E
Camacho
3103 Medlock Bridge Road, Norcross, GA 30071

OWNER
KIPP Metro Atlanta Schools
1445 Maynard Road NW, Atlanta, GA 30331

FACILITY

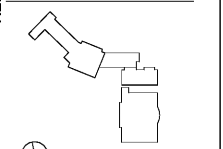
CONTRACTOR

PROJECT

**KIPP ATLANTA
COLLEGIATE - Addition
and Renovations**
98 Anderson Ave NW
Atlanta GA 30314



KEYPLAN



ISSUE CHART

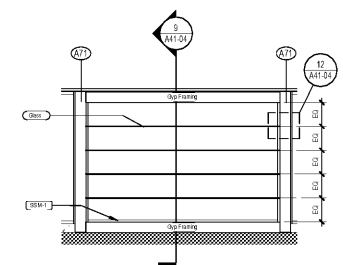
DATE	BY	DATE
Job Number	801660.000	
Drawn	Author	
Checked	Checker	
Approved	Approver	

CASEWORK DETAILS

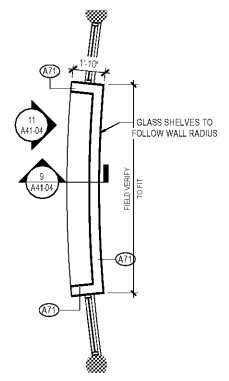
SHEET NUMBER

A41-04

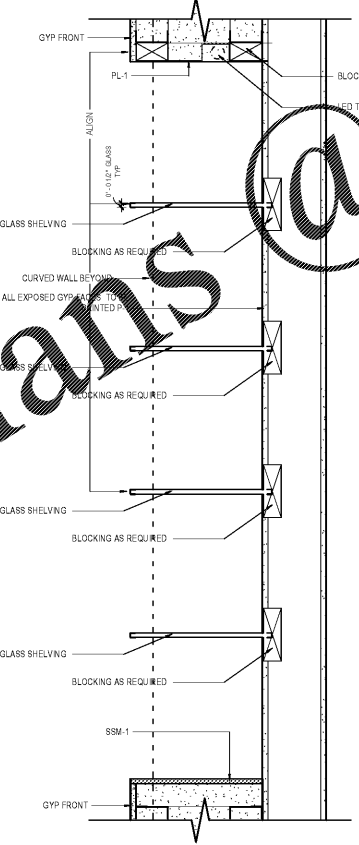
Copyright © 2019 Perkins+Will



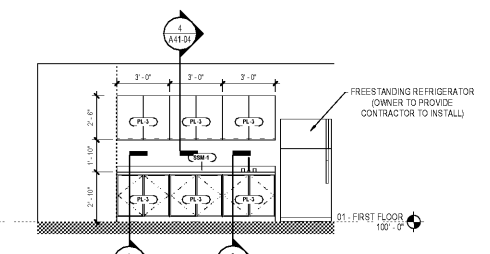
11 ELEVATION - TROPHYCASE
1/4" = 1'-0"



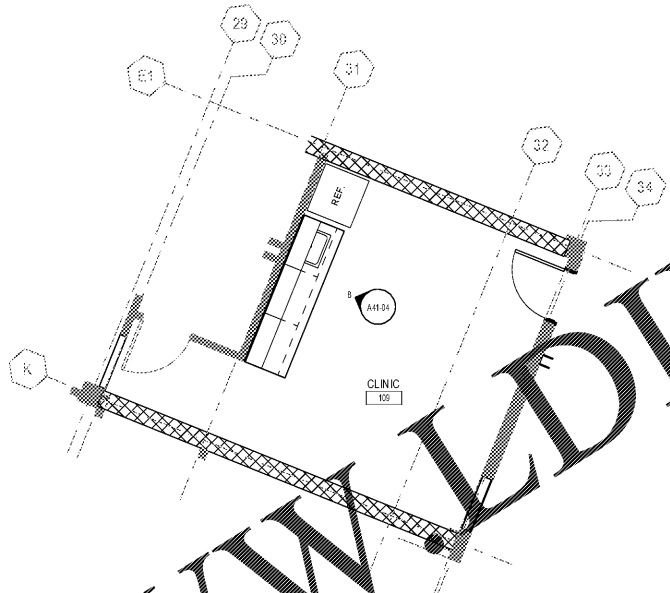
10 ENLARGED FLOORPLAN - TROPHYCASE
1/4" = 1'-0"



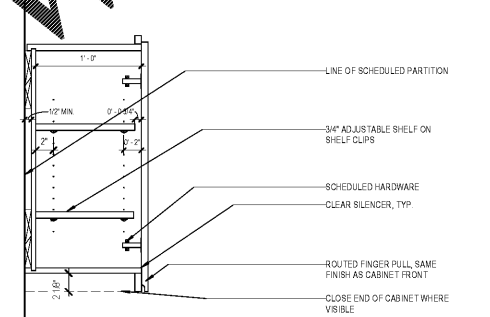
12 SECTION DETAIL - TROPHYCASE SIDE CONNECTION
1 1/2" = 1'-0"



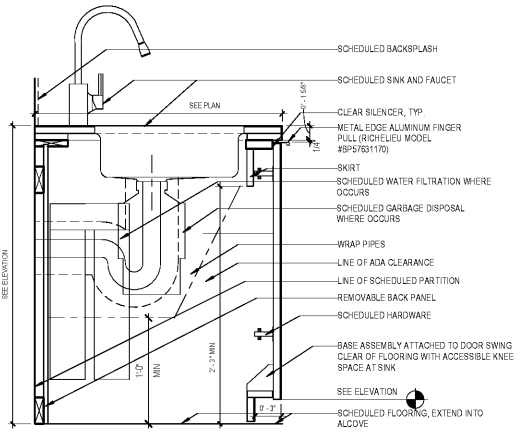
8 INTERIOR ELEVATION - CLINIC
1/4" = 1'-0"



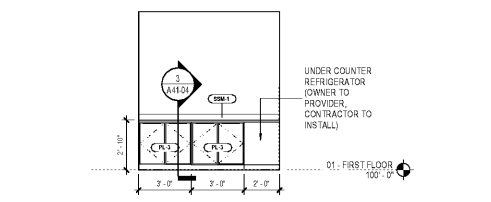
9 ENLARGED FLOOR PLAN - CLINIC
1/4" = 1'-0"



4 SECTION AT UPPER CABINET WITH CLOSED SHELVING
1 1/2" = 1'-0"

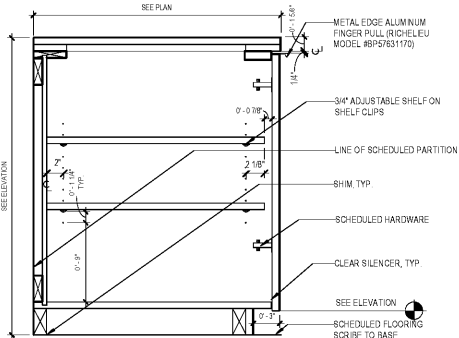


2 SECTION AT BASE CABINET WITH SINK
1 1/2" = 1'-0"

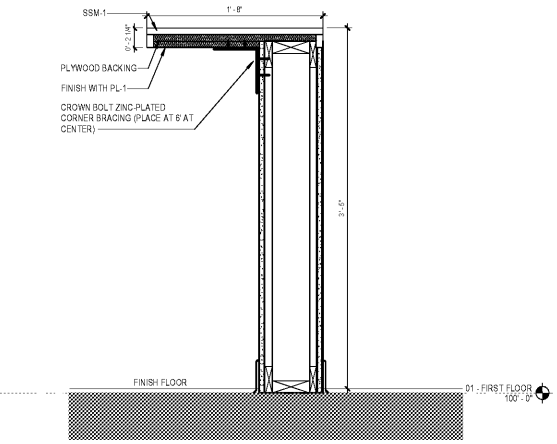


7 INTERIOR ELEVATIONS - MOTHERS ROOM
1/4" = 1'-0"

6 ENLARGED FLOOR PLAN - MOTHERS ROOM
1/4" = 1'-0"



3 SECTION AT BASE CABINET WITH CLOSED SHELVING
1 1/2" = 1'-0"



1 SECTION AT CAFE COUNTER
1 1/2" = 1'-0"

Order Plans @ WWW.WJDLINE.COM