

CONSULTANTS

CIVIL
Breadlove Land Planning
15 Simpson St NW, Atlanta, GA 30308

STRUCTURAL
Lizan+Case
1200 Peachtree St. NE, Suite 2500, Atlanta, GA 30309

MEP
Matheson Ball & Associates
11285 Elkins Rd., Suite F3, Roswell, GA 30076

LANDSCAPING
Perkins+WILL
1315 Peachtree St. NE, Atlanta, GA 30309

PAVING
Camacho
3103 Medlock Bridge Road, Norcross, GA 30071

OWNER
KIPP Metro Atlanta Schools
1445 Maynard Road NW, Atlanta, GA 30331

FACILITY

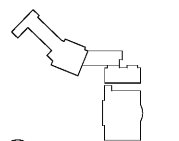
CONTRACTOR

PROJECT

**KIPP ATLANTA
COLLEGIATE - Addition
and Renovations**
98 Anderson Ave NW
Atlanta GA 30314



KEYPLAN



ISSUE CHART

RELEASED FOR CONSTRUCTION 06/07/2019

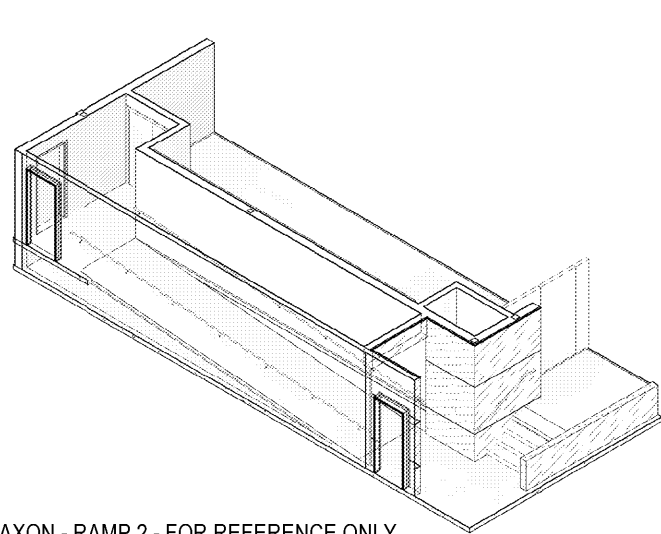
DATE	BY	DATE
Job Number	801660.000	
Drawn	Author	
Checked	Checker	
Approved	Approver	

**STAGE PLANS &
SECTIONS**

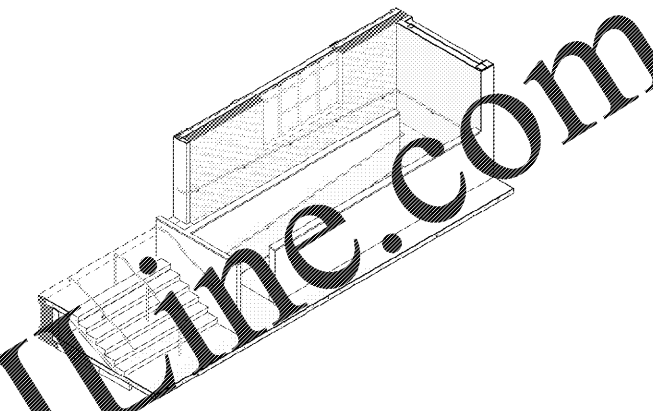
SHEET NUMBER

A41-03

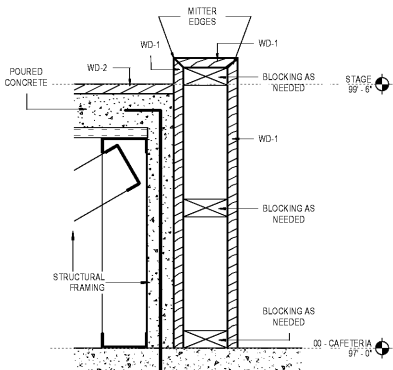
Copyright © 2019 Perkins+WILL



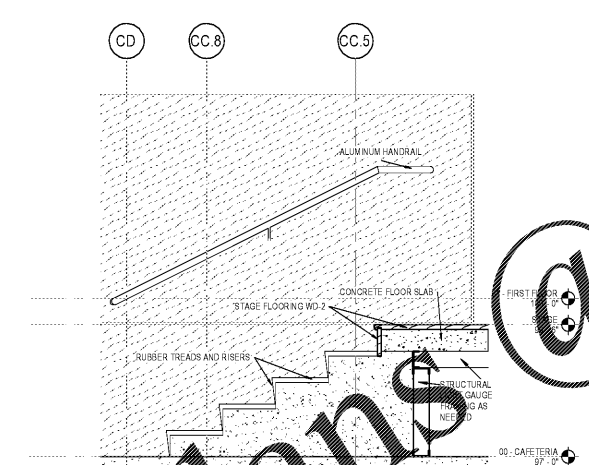
8 AXON - RAMP 2 - FOR REFERENCE ONLY



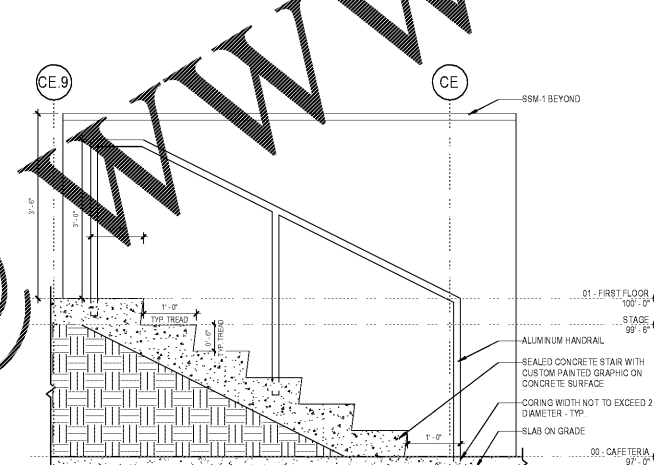
AXON - RAMP 1 - FOR REFERENCE ONLY



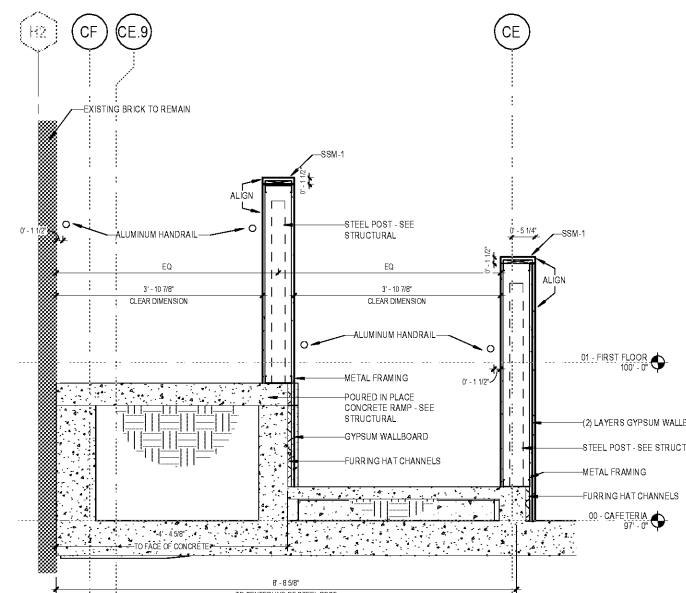
7 STAGE STAIR SECTION TO WALL
1 1/2" = 1'-0"



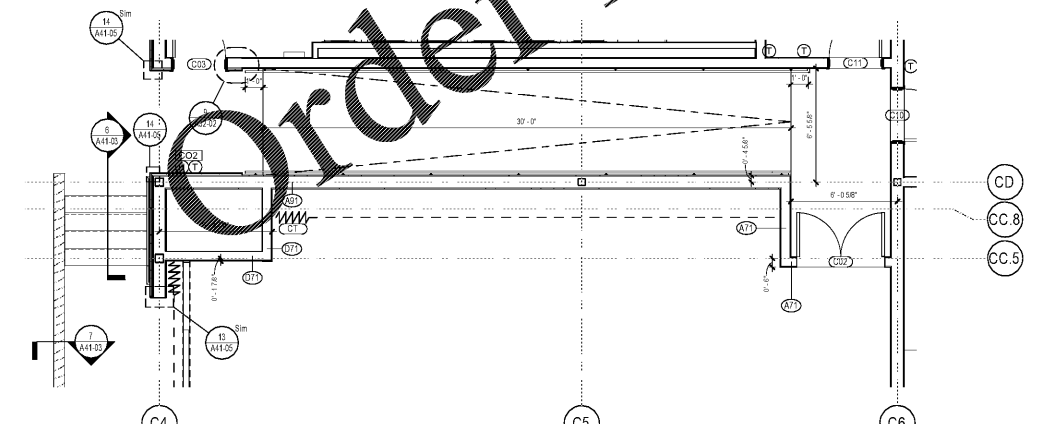
6 STAGE STAIR SECTION
3/4" = 1'-0"



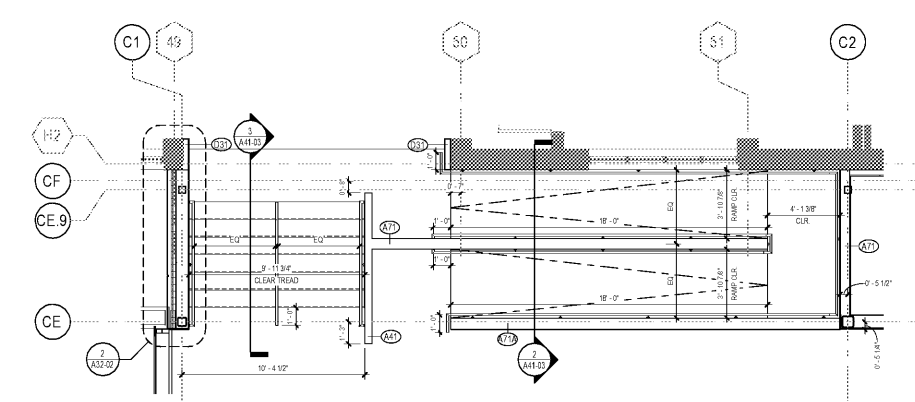
3 CAFETERIA STAIR SECTION
3/4" = 1'-0"



2 RAMP SECTION DETAIL
3/4" = 1'-0"



5 ENLARGED FLOOR PLAN - RAMP
1/4" = 1'-0"



1 INTERIOR STAIR AND RAMP 1
1/4" = 1'-0"

6/7/2019 5:54:36 PM C:\Temp\KIPP_Atlanta_Collegiate_P19_Exec.rvt

Order Plans

WWW.LDILine.com