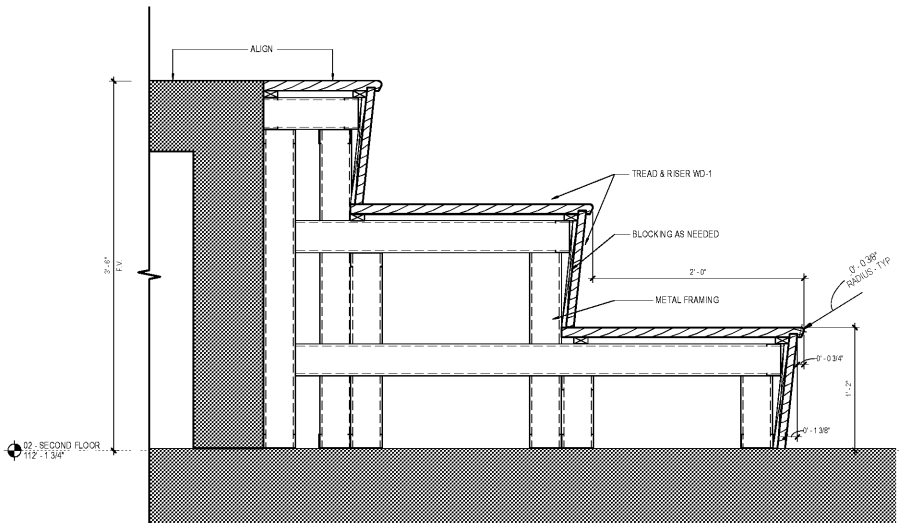
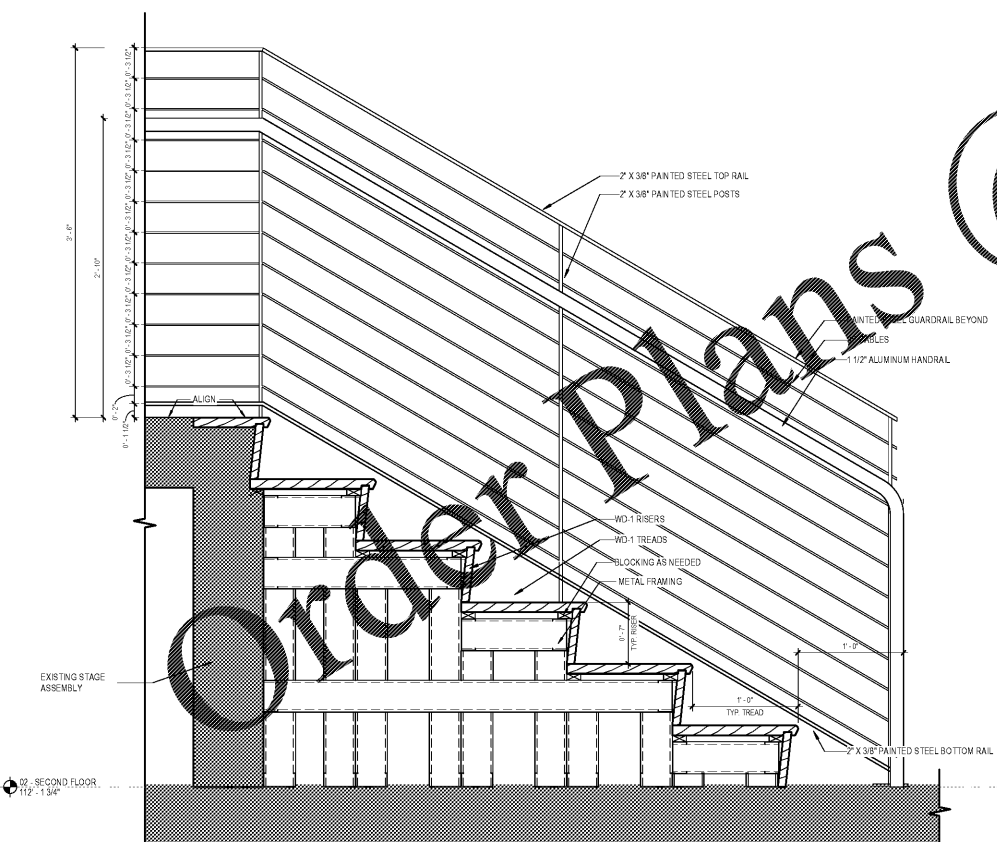


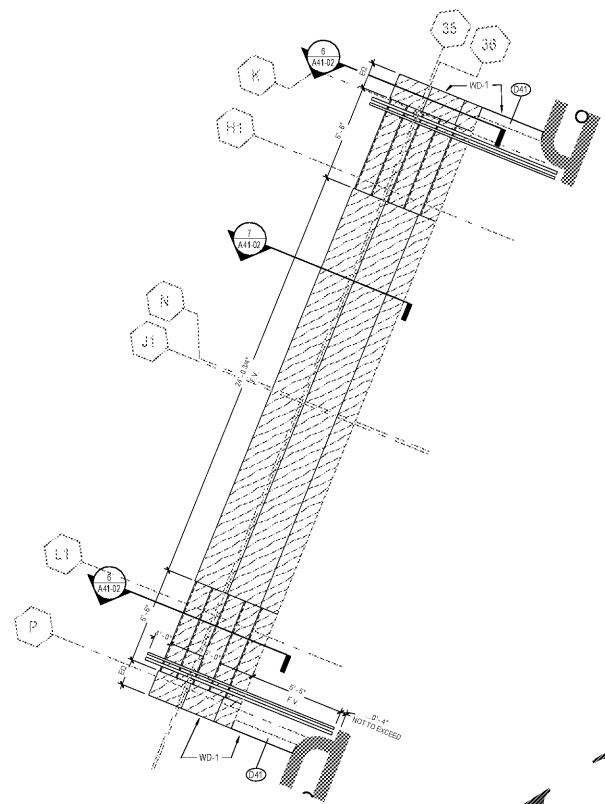
8 AXON - STAIR/SEAT/STAGE - FOR REFERENCE ONLY



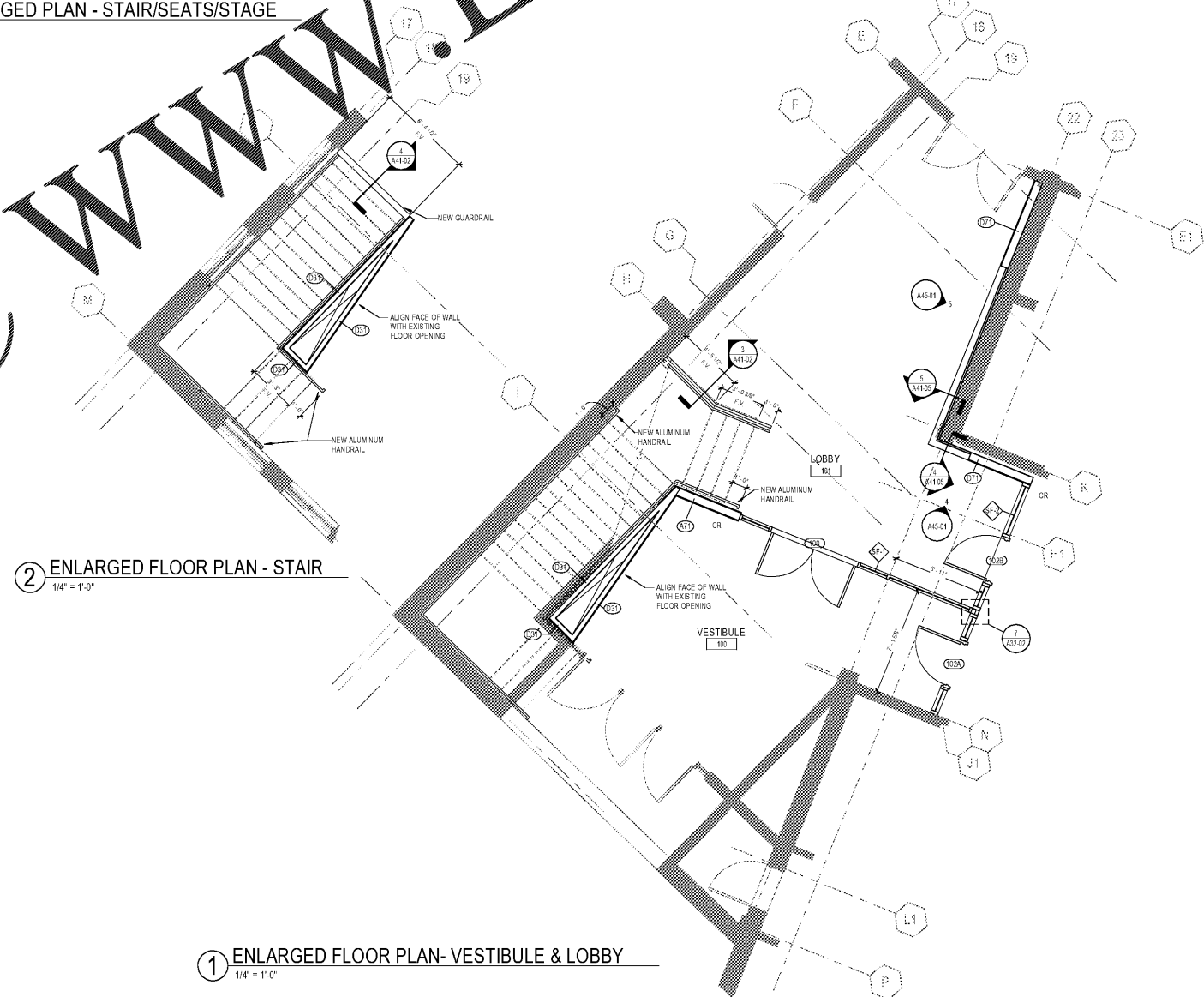
7 SECTION AT STAGE STADIUM SEATS IN COMMONS
1 1/2" = 1'-0"



6 SECTION AT STAGE STAIR IN COMMONS
1 1/2" = 1'-0"



5 ENLARGED PLAN - STAIR/SEATS/STAGE
1/4" = 1'-0"

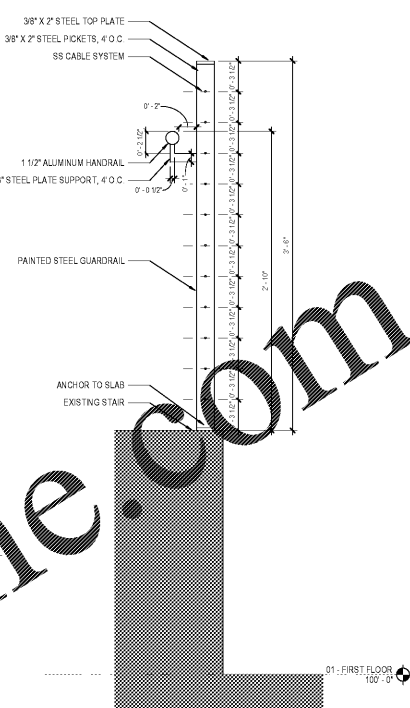
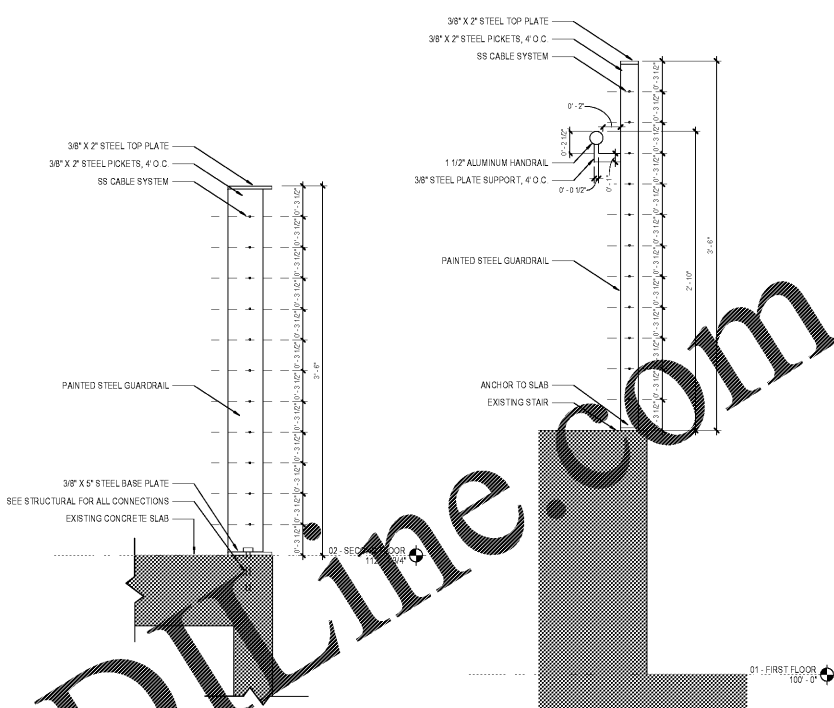


1 ENLARGED FLOOR PLAN - VESTIBULE & LOBBY
1/4" = 1'-0"

2 ENLARGED FLOOR PLAN - STAIR
1/4" = 1'-0"

4 SECTION AT STAIR GUARDRAIL
1 1/2" = 1'-0"

3 GUARDRAIL SECTION AT STAIR
1 1/2" = 1'-0"



CONSULTANTS

CIVIL
Breadlove Land Planning
15 Simpson St NW, Atlanta, GA 30308

STRUCTURAL
Uzun-Cabe
1290 Peachtree St NE, Suite 2500, Atlanta, GA 30309

MEP
Matheson Ball & Associates
11285 Elkins Rd., Suite F3, Roswell, GA 30076

LANDSCAPING
Perkins+Will
1315 Peachtree St NE, Atlanta, GA 30309

ARCHITECT
Camacho
3103 Medlock Bridge Road, Norcross, GA 30071

OWNER
KIPP Metro Atlanta Schools
1445 Maynard Road NW, Atlanta, GA 30331

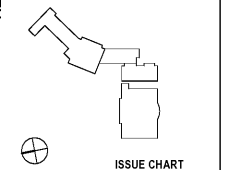
CONTRACTOR

PROJECT

**KIPP ATLANTA
COLLEGIATE - Addition
and Renovations**
98 Anderson Ave NW
Atlanta GA 30314



KEYPLAN



ISSUE CHART

DATE	BY	DATE
Job Number	801660.000	
Drawn	Author	
Checked	Checker	
Approved	Approver	

STAIR PLANS & SECTIONS

SHEET NUMBER

A41-02