

CONSULTANTS

CIVIL
Broadiva Land Planning
15 Simpson St NW, Atlanta, GA 30308

STRUCTURAL
Lizari-Care
1200 Peachtree St NE, Suite 2500, Atlanta, GA 30309

MEP
Matheson Bai & Associates
11285 Elkins Rd., Suite F3, Roswell, GA 30076

LANDSCAPING
Perkins+WILL
1315 Peachtree St NE, Atlanta, GA 30309

ARCHITECT
Camacho
3103 Medlock Bridge Road, Norcross, GA 30071

OWNER
KIPP Metro Atlanta Schools
1445 Maynard Road NW, Atlanta, GA 30331

FACILITY

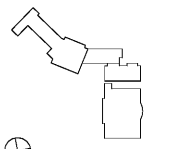
CONTRACTOR

PROJECT

**KIPP ATLANTA
COLLEGIATE - Addition
and Renovations**
98 Anderson Ave NW
Atlanta GA 30314



KEYPLAN



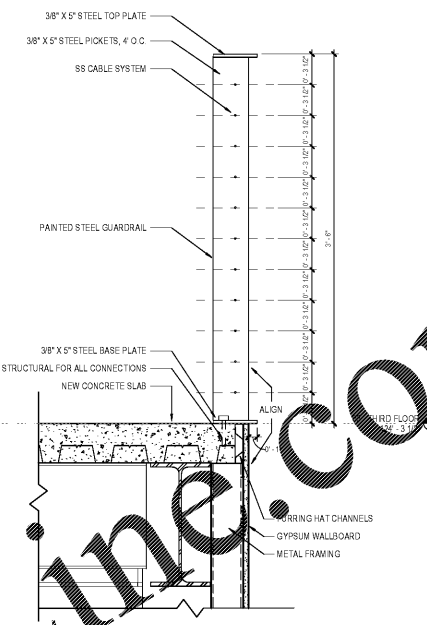
ISSUE CHART

| NO. | DATE | BY | CHKD. |
|------------|------------|----|-------|
| Job Number | 801660.000 | | |
| Drawn | Author | | |
| Checked | Checker | | |
| Approved | Approver | | |

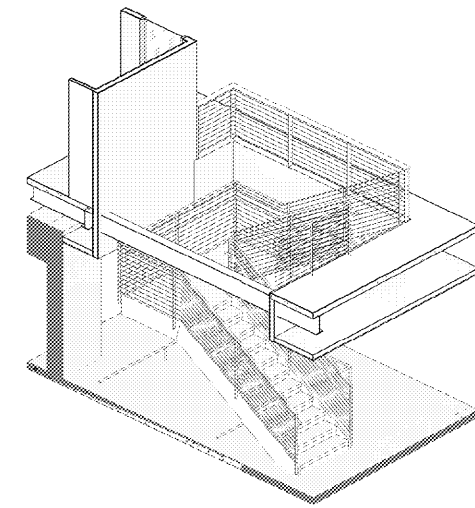
STAIR PLANS & SECTIONS

SHEET NUMBER

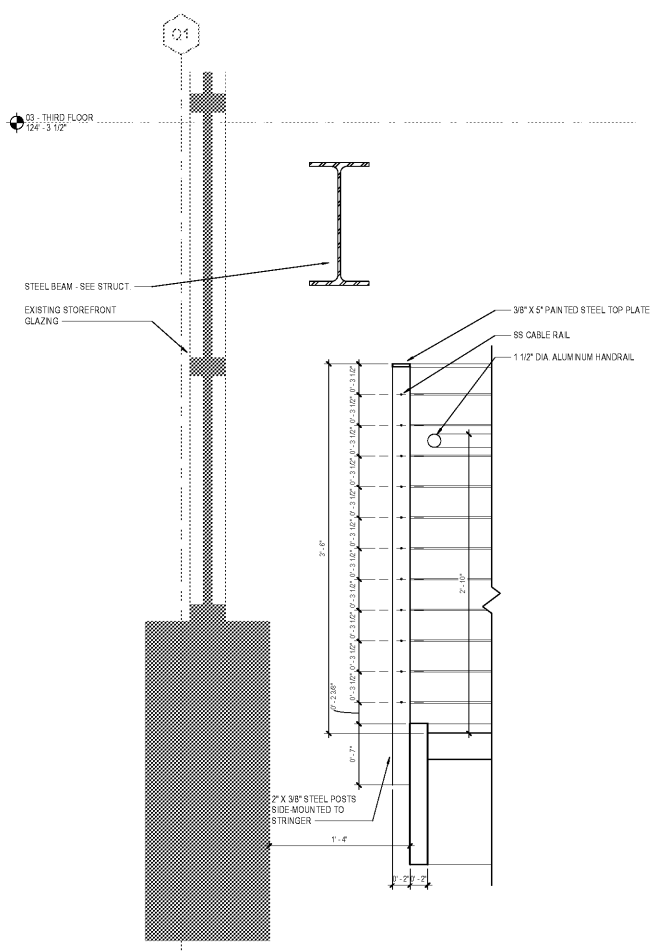
A41-01



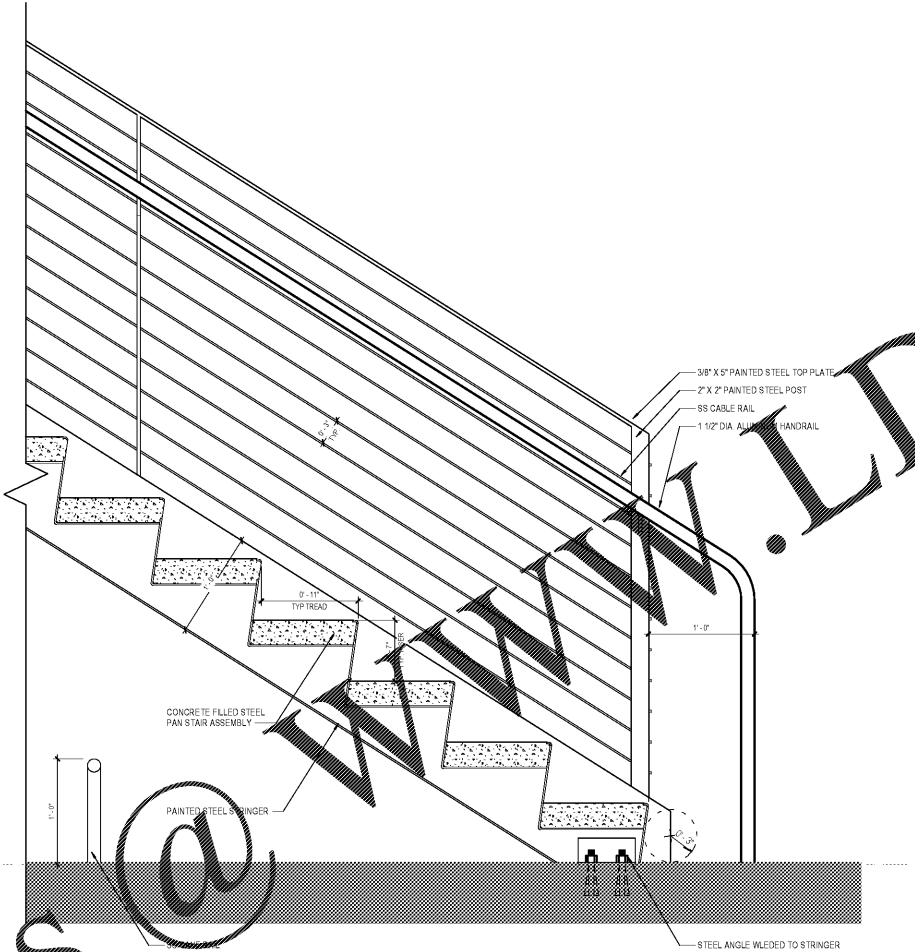
SECTION A-A KTC RAILING
1 1/2" = 1'-0"



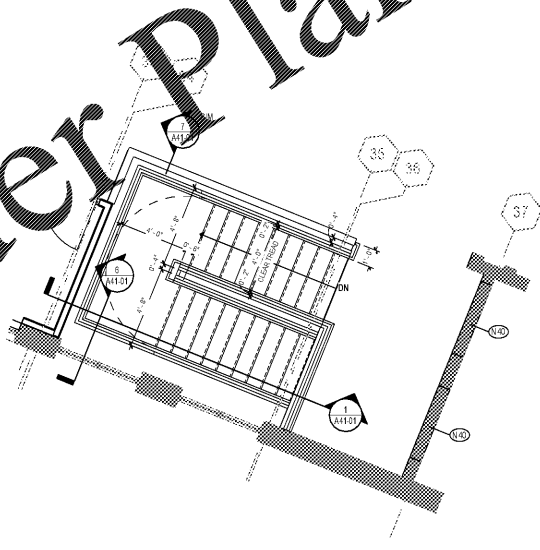
AXON - KTC STAIR - FOR REFERENCE ONLY



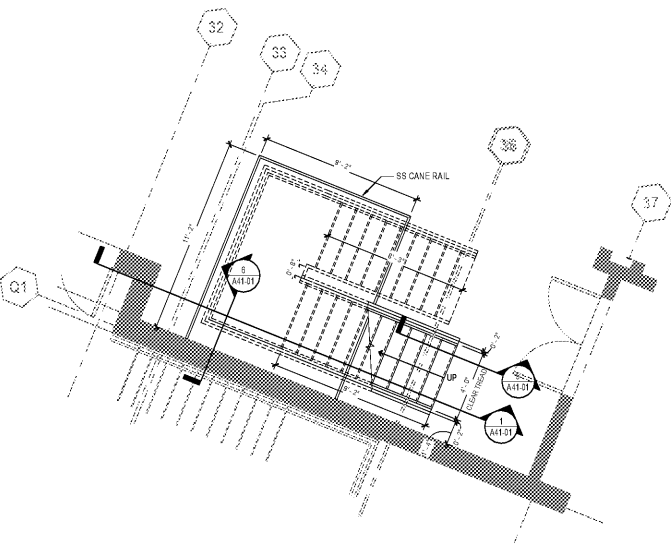
KTC STAIR LANDING SECTION
1 1/2" = 1'-0"



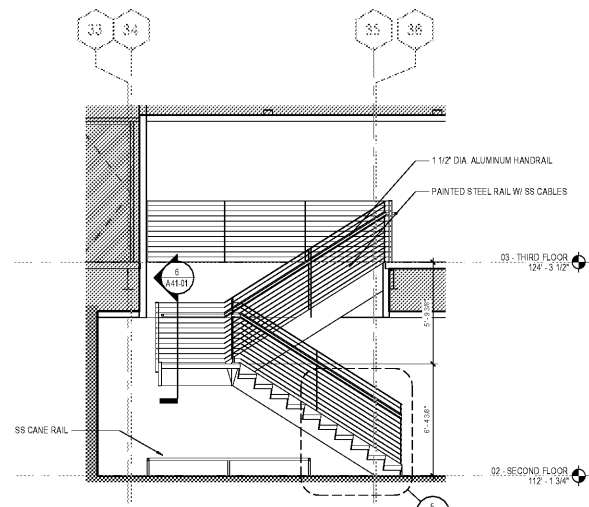
KTC STAIR SECTION
1 1/2" = 1'-0"



KTC STAIR - LEVEL 03
1/4" = 1'-0"



KTC STAIR - LEVEL 02
1/4" = 1'-0"



KTC STAIR SECTION
1/4" = 1'-0"

Order Plans @

WWW.LDLINE.COM