

CONSULTANTS

CIVIL
Breedlove Land Planning
15 Simpson St NW, Atlanta, GA 30308

STRUCTURAL
Lizaj-Caree
1250 Peachtree St. NE, Suite 2500, Atlanta, GA 30309

MEP
Matheson Bai & Associates
11285 Elkins Rd., Suite F3, Roswell, GA 30076

LANDSCAPING
Perkins+WILL
1315 Peachtree St. NE, Atlanta, GA 30309

OWNER
Camacho
3103 Medlock Bridge Road, Norcross, GA 30071

OWNER
KIPP Metro Atlanta Schools
1445 Maynard Road NW, Atlanta, GA 30331

FACILITY

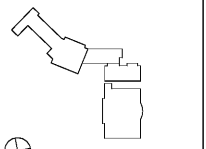
CONTRACTOR

PROJECT

**KIPP ATLANTA
COLLEGIATE - Addition
and Renovations**
98 Anderson Ave NW
Atlanta GA 30314



KEYPLAN



ISSUE CHART

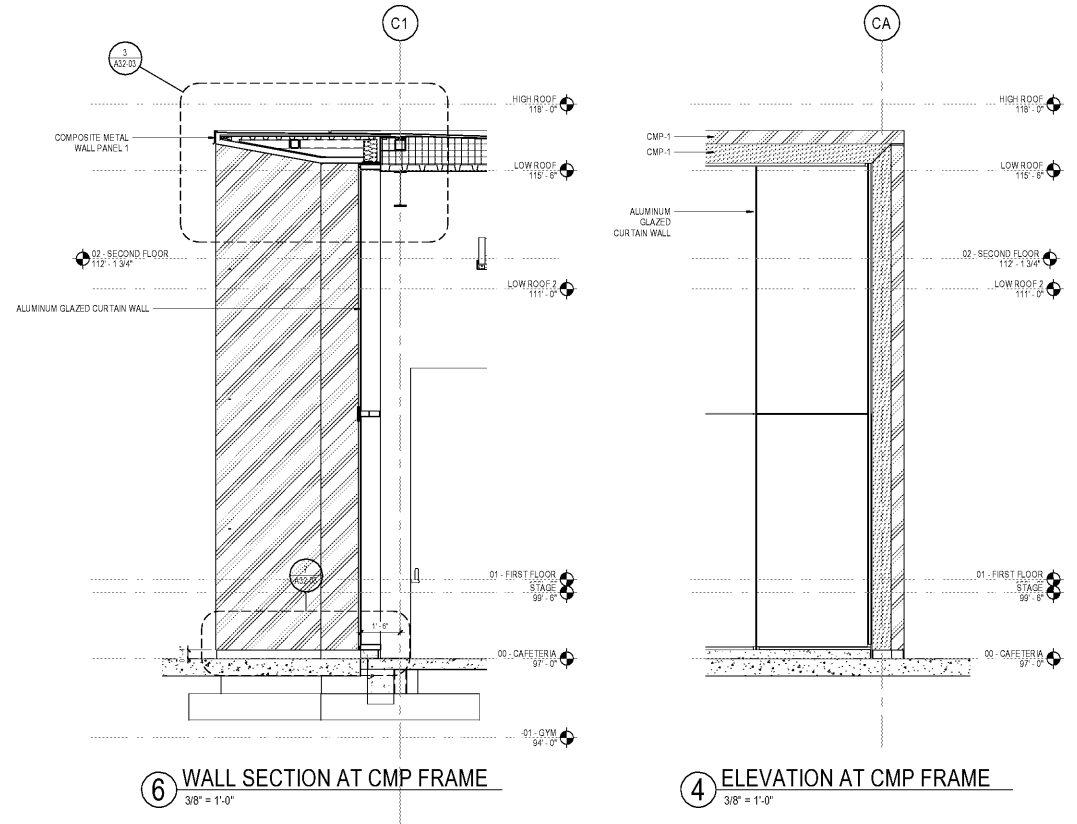
RELEASED FOR CONSTRUCTION 06/07/2019

DATE	BY	DATE
Job Number	801660.000	
Drawn	Author	
Checked	Checker	
Approved	Approver	

CMP FRAME DETAILS

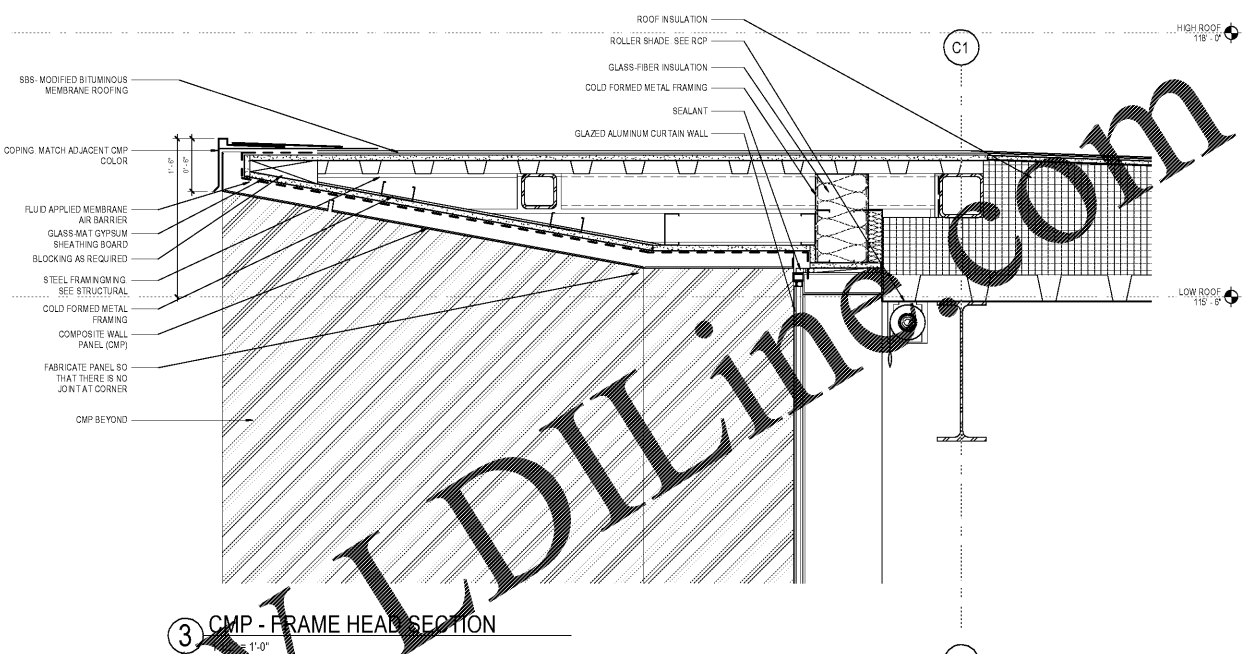
SHEET NUMBER

A32-03

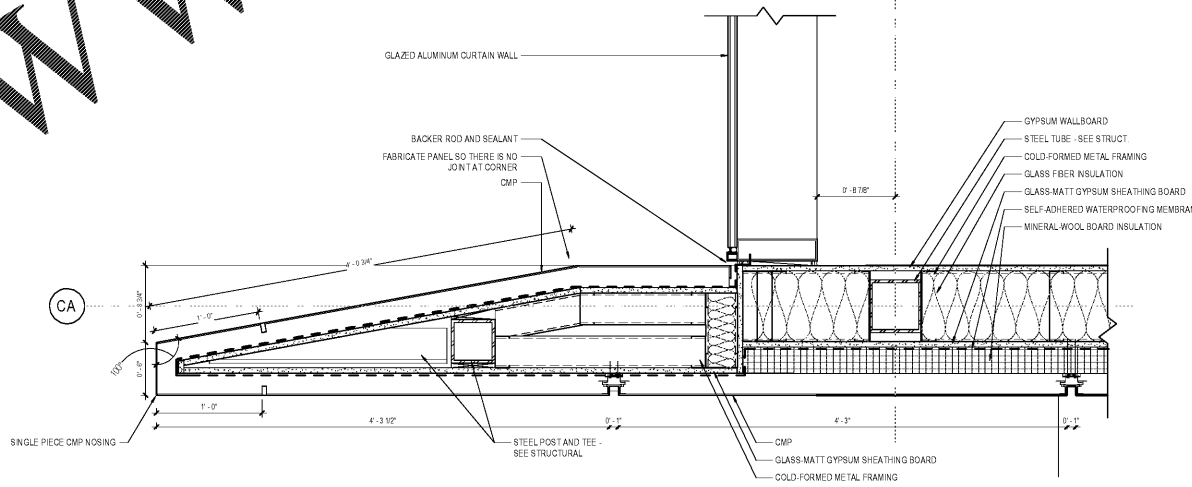


6 WALL SECTION AT CMP FRAME
3/8" = 1'-0"

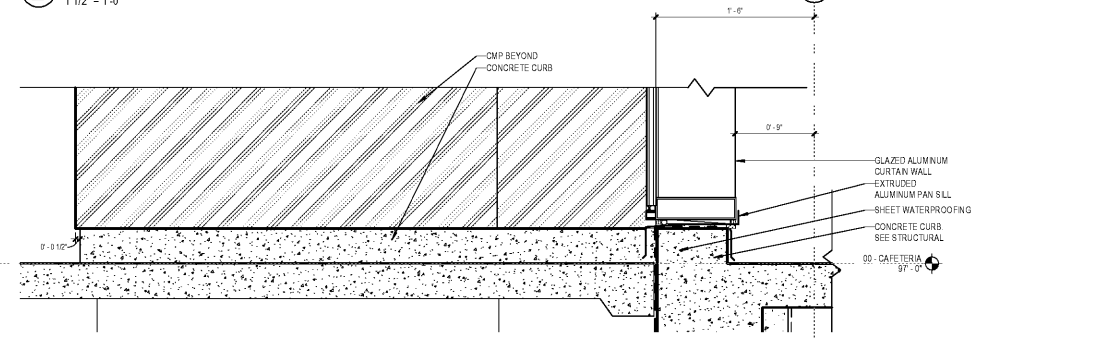
4 ELEVATION AT CMP FRAME
3/8" = 1'-0"



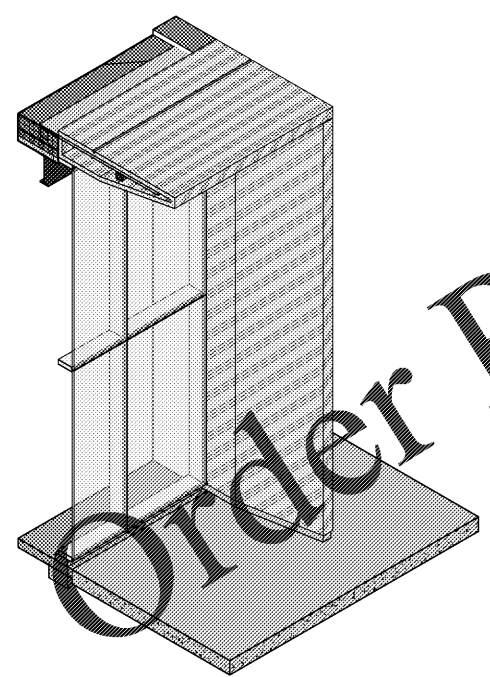
3 CMP - FRAME HEAD SECTION
1'-0"



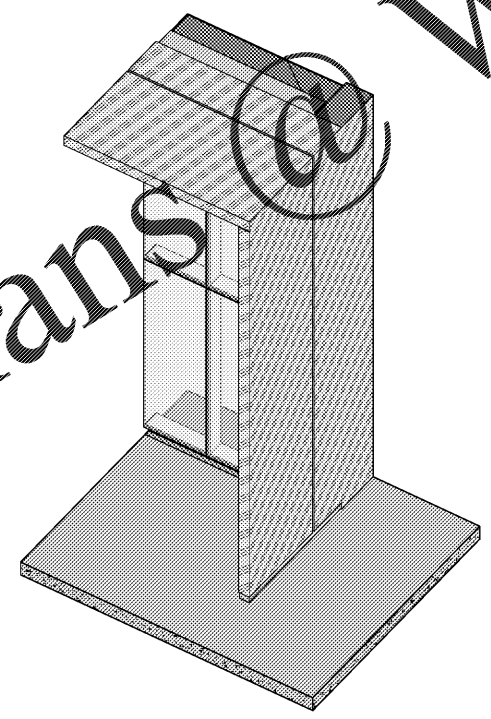
2 CMP - FRAME JAMB PLAN DETAIL
1 1/2" = 1'-0"



7 CMP - FRAME SILL AT CURTAIN WALL
1 1/2" = 1'-0"



5 AXON - DETAIL 2



1 AXON - DETAIL 1