

CONSULTANTS

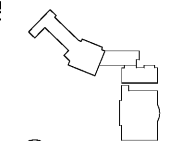
- CIVIL**
Breadloaf Land Planning
15 Simpson St NW, Atlanta, GA 30308
- STRUCTURAL**
Uzun-Cabe
1250 Peachtree St. NE, Suite 2500, Atlanta, GA 30309
- MEP**
Matheson Dal & Associates
11285 Elkins Rd., Suite F3, Roswell, GA 30076
- LANDSCAPING**
Perkins+Will
1315 Peachtree St. NE, Atlanta, GA 30309
- PLUMBING**
Camacho
3103 Medlock Bridge Road, Norcross, GA 30071
- OWNER**
KIPP Metro Atlanta Schools
1445 Maynard Road NW, Atlanta, GA 30331
- FACILITY**
- CONTRACTOR**

PROJECT

**KIPP ATLANTA
COLLEGIATE - Addition
and Renovations**
98 Anderson Ave NW
Atlanta GA 30314



KEYPLAN



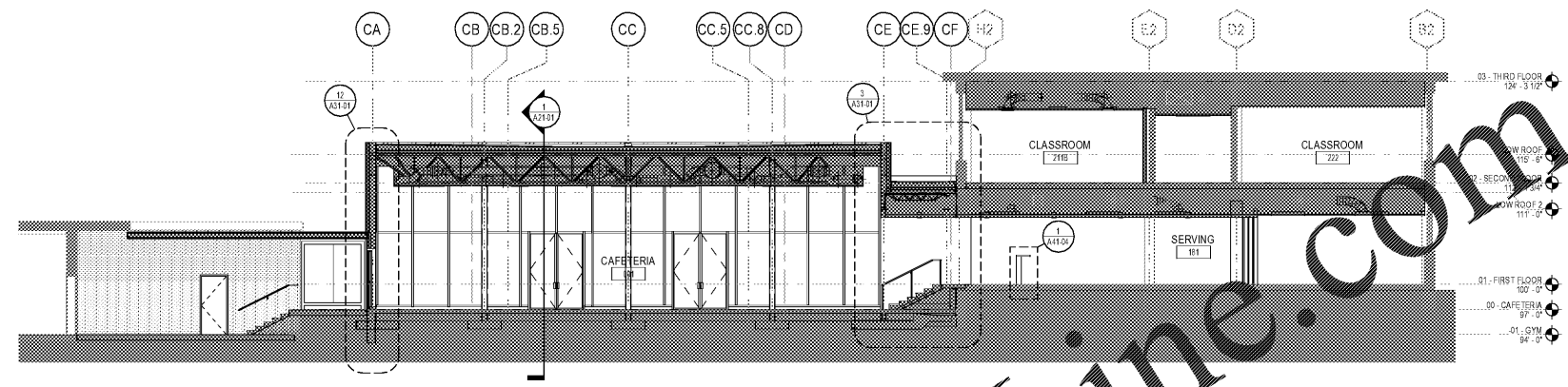
ISSUE CHART

NO.	DATE	DESCRIPTION
0001	06/07/2019	ISSUE

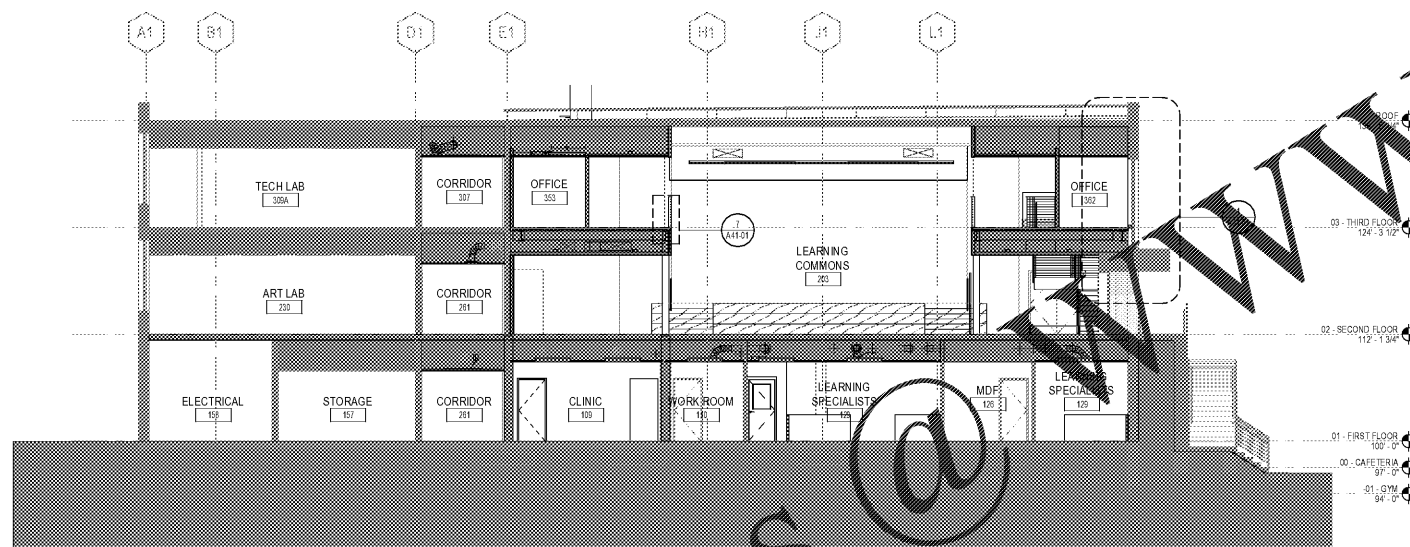
BUILDING SECTIONS

SHEET NUMBER

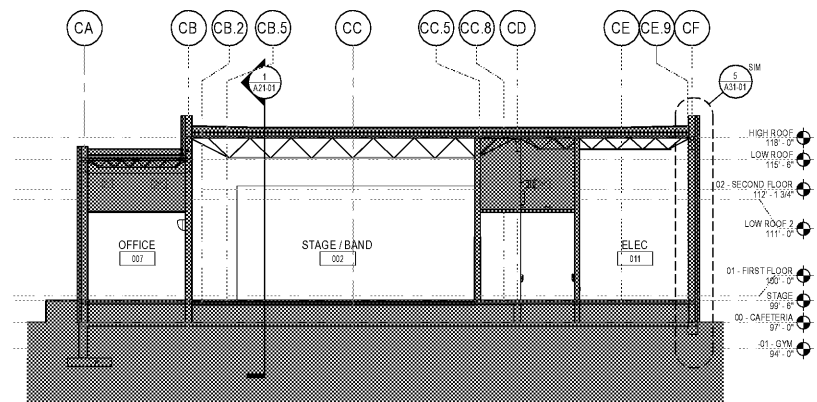
A21-01



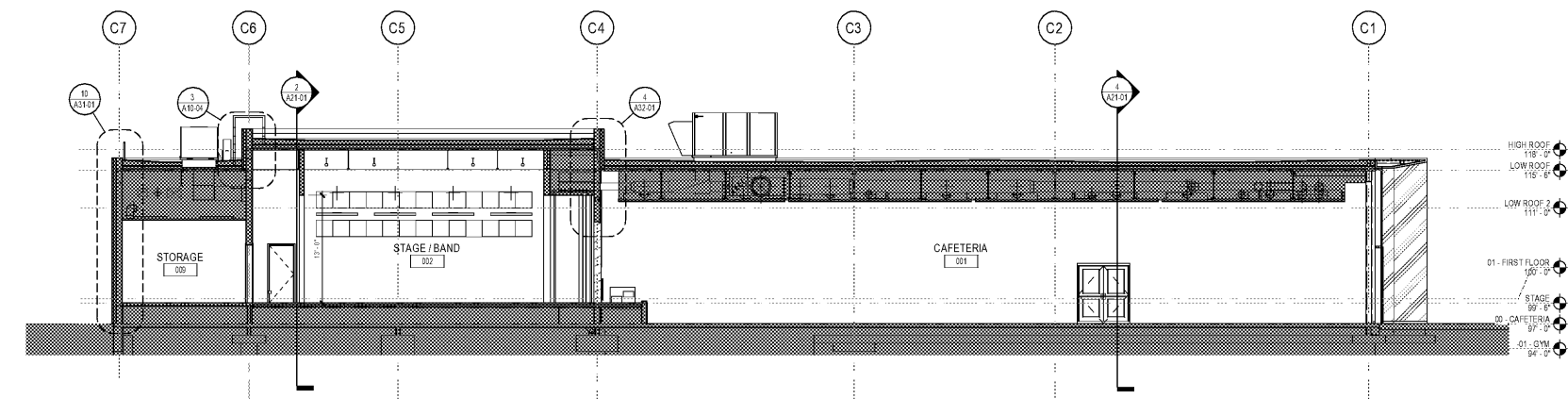
4 BUILDING SECTION
1/8" = 1'-0"



3 BUILDING SECTION - KTC
1/8" = 1'-0"



2 BUILDING SECTION
1/8" = 1'-0"



1 BUILDING SECTION
1/8" = 1'-0"

Order Plans @

WWW.LDILine.com