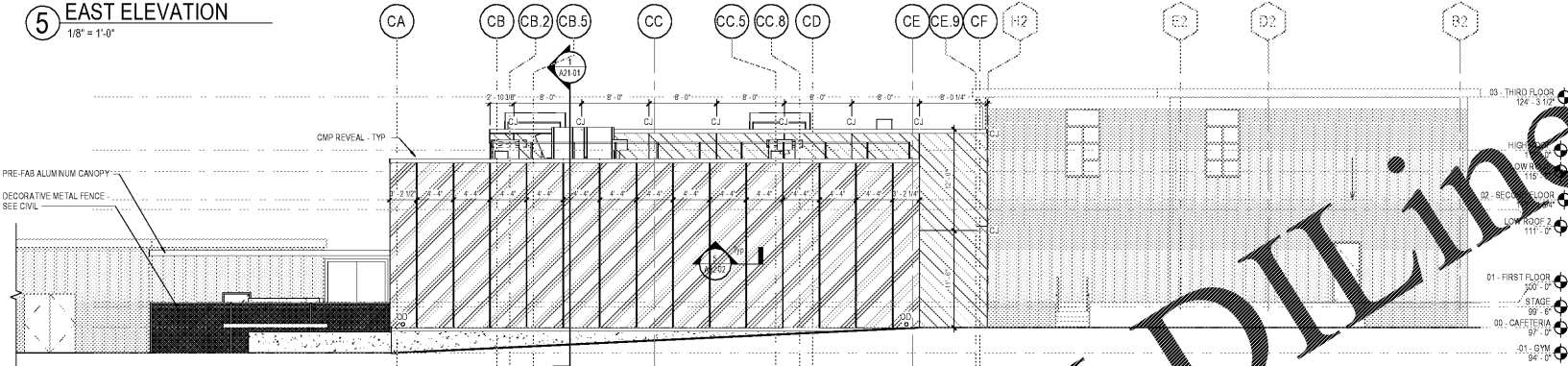
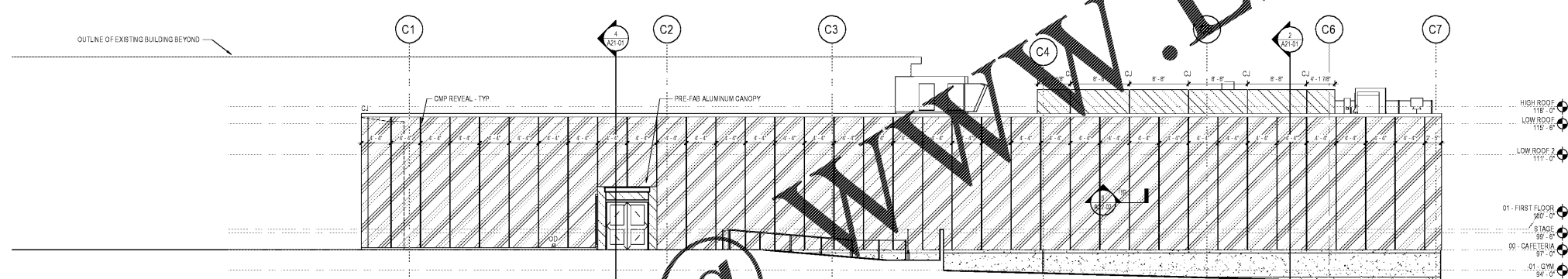


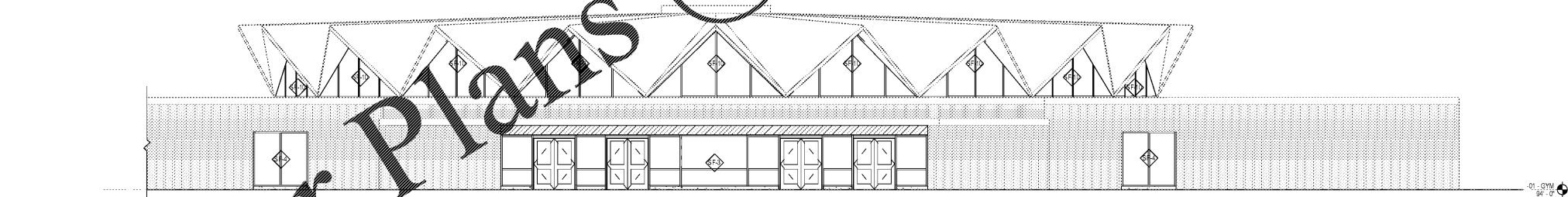
5 EAST ELEVATION
1/8" = 1'-0"



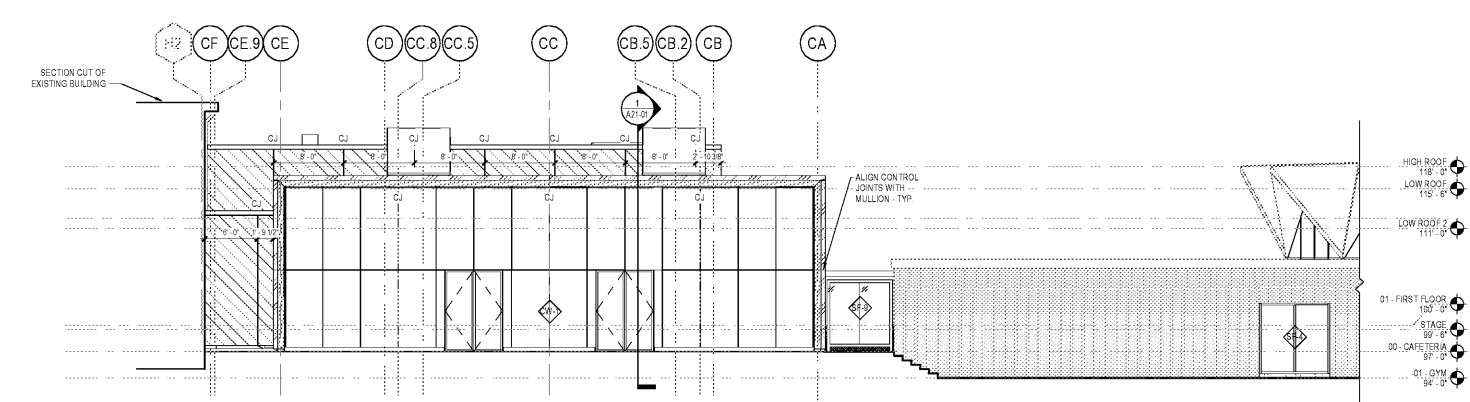
4 SOUTH ELEVATION
1/8" = 1'-0"



3 WEST ELEVATION
1/8" = 1'-0"



2 NORTH ELEVATION - PART B
1/8" = 1'-0"

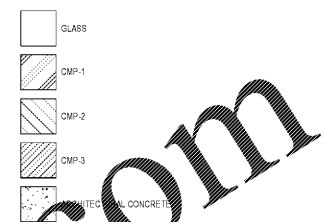


1 NORTH ELEVATION - PART A
1/8" = 1'-0"

EXTERIOR ELEVATION
GENERAL NOTES

1. MATERIAL SYMBOLS ON ELEVATIONS ARE TO DISPLAY THE EXTENT OF THE MATERIAL ONLY. THEY ARE NOT TO SCALE.

EXTERIOR ELEVATION
LEGEND



EXTERIOR ELEVATION
NOTES

PERKINS
+ WILL

1315 Peachtree St NE
Atlanta, GA 30309
T 404.873.2500
F 404.872.2522
www.perkinswill.com

CONSULTANTS

CIVIL
Breadlove Land Planning
15 Simpson St NW, Atlanta, GA 30308

STRUCTURAL
Uzun-Cabas
1230 Peachtree St. NE, Suite 2500, Atlanta, GA 30309

MEP
Matheson Bai & Associates
11285 Elkins Rd., Suite F3, Roswell, GA 30076

LANDSCAPING
Perkins+WILL
1315 Peachtree St. NE, Atlanta, GA 30309

OWNER
Camacho
3103 Medlock Bridge Road, Norcross, GA 30071

OWNER
KIPP Metro Atlanta Schools
1445 Maynard Road NW, Atlanta, GA 30331

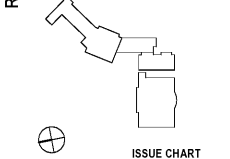
CONTRACTOR

PROJECT

KIPP ATLANTA
COLLEGIATE - Addition
and Renovations
98 Anderson Ave NW
Atlanta GA 30314



KEYPLAN



ISSUE CHART

DATE	REVISION	DATE
07/2019	ISSUE	DATE
	Job Number	801660.000
	Drawn	Author
	Checked	Checker
	Approved	Approver

EXTERIOR
ELEVATIONS

SHEET NUMBER

A20-01

Copyright © 2019 Perkins+Will

Order Plans @ WWW.LDILINE.com