

**CONSULTANTS**

**CIVIL**  
Breadlove Land Planning  
15 Simpson St NW, Atlanta, GA 30308

**STRUCTURAL**  
Liza+Cabe  
1230 Peachtree St NE, Suite 2500, Atlanta, GA 30309

**MEP**  
Matheson Bai & Associates  
11285 Elkins Rd., Suite F3, Roswell, GA 30076

**LANDSCAPING**  
Perkins+WILL  
1315 Peachtree St NE, Atlanta, GA 30309

**FFM**  
Camacho  
3103 Medlock Bridge Road, Norcross, GA 30071

**OWNER**  
KIPP Metro Atlanta Schools  
1445 Maynard Road NW, Atlanta, GA 30331

**FACILITY**

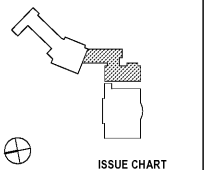
**CONTRACTOR**

**PROJECT**

**KIPP ATLANTA  
COLLEGIATE - Addition  
and Renovations**  
98 Anderson Ave NW  
Atlanta GA 30314



**KEYPLAN**



**ISSUE CHART**

RELEASED FOR CONSTRUCTION 06/07/2019

**INTERIOR FINISH PLAN  
GENERAL NOTES**

- FIELD PAINT WALLS P-1, EGGSHELL FINISH, UNO
- ALL INTERIOR PAINTED FINISHES TO RECEIVE NEW PAINT
- ALL HM DOOR FRAMES TO BE PAINTED P-10, SEMIGLOSS, UNO
- DOOR FRAMES OCCURRING IN ACCENT WALLS TO BE THE SAME COLOR AS THE WALL ON WHICH IT OCCURS, SEMIGLOSS FINISH
- ALL CEILINGS TO BE PAINTED P-1 FLAT FINISH, UNO
- ALL RUBBER BASE TO BE RB-1, UNO, COLOR TO MATCH STOREFRONT
- ALL PARTITIONS TO RECEIVE NEW B-4
- ALL EXPOSED CONCRETE COLUMNS TO RECEIVE RB-1 AT BASE AND P-1
- INSTALL RUBBER CARPET TRANSITION STRIP ON LOCATIONS WHERE THERE IS A CHANGE IN MATERIAL OR FLOOR LEVEL AND THE CARPET EDGE IS EXPOSED, EXCEPT WHERE ANOTHER DEVICE SUCH AS A THRESHOLD IS INDICATED
- EXTEND SPECIFIED FLOORING INTO CLOSETS, UNO
- ALIGN TILE BASE GROUT LINES WITH WALL TILE GROUT LINES AND FLOOR TILE GROUT LINES WITH TILE BASE GROUT LINES
- REFER ALL INTERIOR SIGNAGE TO SIGNAGE PACKAGE
- APPLY P-9 CLEAR COAT TO ALL INTERIOR PAINTED WALL SURFACES
- ALL EXPOSED COLLUMNS TO BE PAINTED P-1
- ALL EXPOSED CONCRETE TO REMAIN UNFINISHED UNLESS OTHERWISE NOTED

- LEGEND**
- FINISH MARKER
  - WALL ACCENT MARKER
  - NOT IN SCOPE

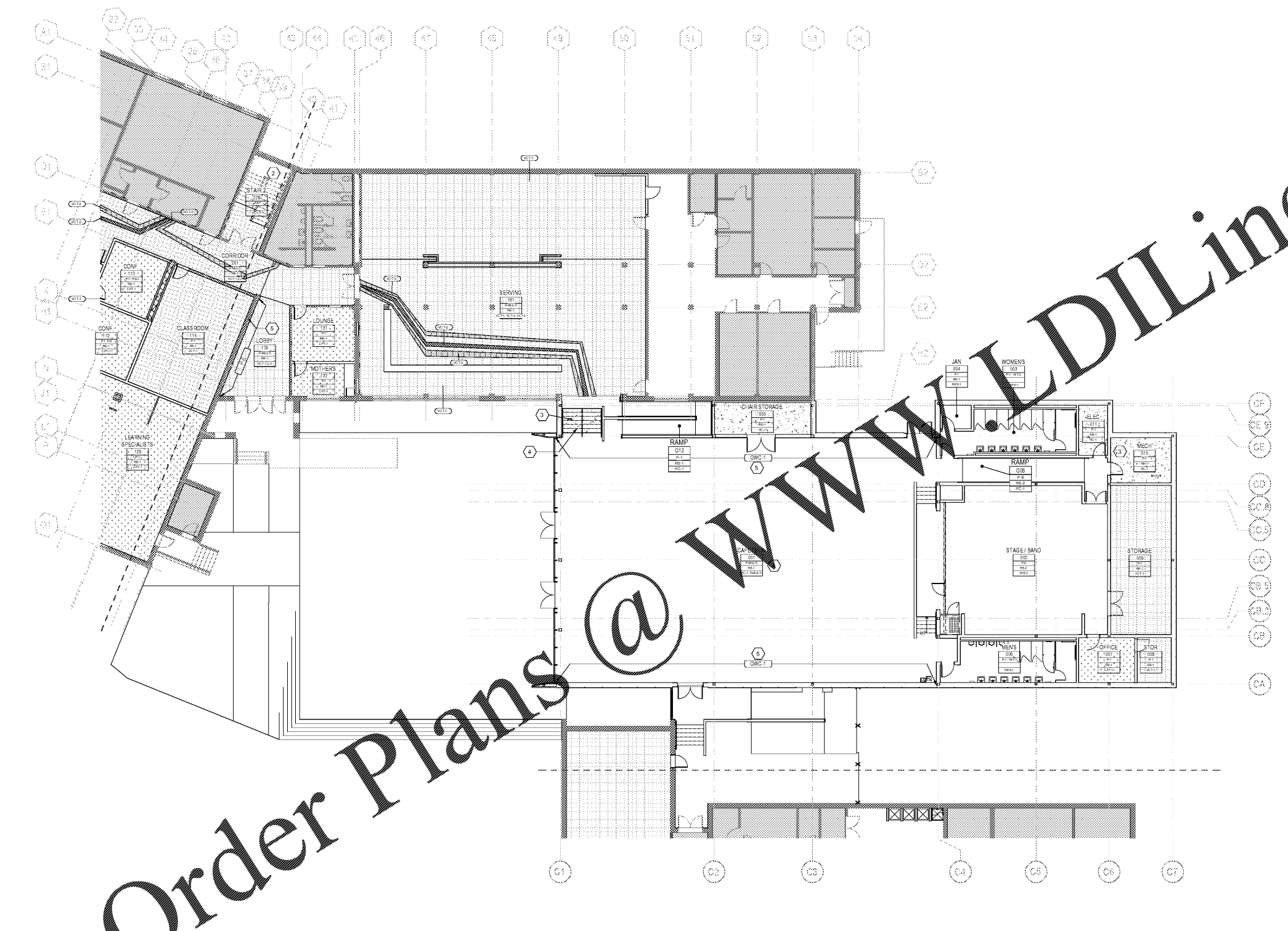
- FLOOR FINISH**
- VCT-1, VCT-2, VCT-3, VCT-4
  - VCT-5, VCT-6, VCT-7, OPT-1, WD-1
- FLOOR & WALL FINISH (CONCRETE SEALANT TO BE APPLIED ON ALL PAINTED FLOOR SURFACES)**
- PNT-1, PNT-2, PNT-3, PNT-4, PNT-5, PNT-6
  - OPT-1, GWC-1, GWC-2, SC-1

**INTERIOR FINISH  
MATERIAL SCHEDULE**

- AWP-1 ACoustICAL WALL PANEL, GULFORD OF MAINE, STUDIO 54 2966, SHIMMER PNT OR Q170 2970, CRYSTAL T049
- OPT-1 CARPET TILE, INTERFACE - EXPOSED, 888' IRON WORKS
- ALL VCT TO HAVE IMPERIAL TEXTURE WITH DIAMOND 10 COATING TECHNOLOGY
- VCT-1 ARMS TRONG STANDARD EXCELON - TRACERY
  - VCT-2 ARMS TRONG STANDARD EXCELON - GRASSIN' GREEN
  - VCT-3 ARMS TRONG STANDARD EXCELON - SEA GREEN
  - VCT-4 ARMS TRONG STANDARD EXCELON - CLASSIC BLACK
  - VCT-5 ARMS TRONG STANDARD EXCELON - VICIOUS VIOLET
  - VCT-6 ARMS TRONG STANDARD EXCELON - TYRANIN PURPLE
  - VCT-7 ARMS TRONG STANDARD EXCELON - VIOLET BLOOM
- P-1 PAINT: SHERWIN WILLIAMS (FIELD COLOR) - SW 708 ALABASTER
  - P-2 PAINT: SHERWIN WILLIAMS (ACCENT) - SW 821 ELECTRIC LINE
  - P-3 PAINT: SHERWIN WILLIAMS (ACCENT) - SW 824 DIRECT GREEN
  - P-4 PAINT: SHERWIN WILLIAMS (ACCENT) - SW 825 ENVY
  - P-5 PAINT: SHERWIN WILLIAMS (ACCENT) - SW 6748 GREENS
  - P-6 PAINT: SHERWIN WILLIAMS (ACCENT) - SW 8283 FULLY PURPLE
  - P-7 PAINT: SHERWIN WILLIAMS (ACCENT) - SW 8284 CLAD YELLOW
  - P-8 PAINT: SHERWIN WILLIAMS (BLACK) - SW 8228 TRICOON BLACK
  - P-9 PAINT: DECA PAINT (CLEAR) - WRITABLE SURFACE
  - P-10 PAINT: SHERWIN WILLIAMS (GREY) - TSD
- PL-1 PLASTIC LAMINATE: WILSONART (WHITE) - DESIGNER WHITE
  - PL-2 PLASTIC LAMINATE: WILSONART (GREY) - PLATINUM
  - PL-3 PLASTIC LAMINATE: WILSONART (WOOD) - HIGHLINE
- RA-1 RUBBER STAIR ACCESSORIES: BASIS OF DESIGN ALLSTATE STAIR TREAD WITH INTEGRATED RISER, RAISED ROUND, LANDINGS TO BE SMOOTH
  - RF-1 RUBBER SPORT FLOORING, TARKETT REPLAY SPORT SHEET COLOR TBD
  - RB-1 RUBBER BASE: JOHNSONITE - 21 PLATINUM OG
  - RB-2 RUBBER BASE: JOHNSONITE - BLACK TBD
  - RES-1 EPOXY RESINOUS FLOORING, KEY RESIN, CUSTOM COLOR TBD (GRAY)
  - PC-1 POLISHED CONCRETE
  - SC-1 SEALED CONCRETE
  - SSM-1 SOLID SURFACE: WILSONART (WHITE) - ARTIC DUNE
  - SSM-2 SOLID SURFACE: WILSONART (GREY) - ZEN GREY
  - WT-1 WALL TILE: DAL TILE, 1X3 LATTICE WEAVE MOSAIC, COLOR TBD
  - WT-2 WALL TILE: DAL TILE, 1X3 LATTICE WEAVE MOSAIC, COLOR TBD
  - WD-0 EXISTING WOOD TO BE REFINISHED
  - WD-1 WOOD: AN FOSTRY - ASHLAND OAK S0190
  - WD-2 PLYWOOD FLOOR ON SLEEPERS (SEE DETAIL) (PLYWOOD PAINTED BLACK)
  - GWC-1 DIGITAL GRAPHIC WALL COVERING (SEE BRANDING PACKAGE)
  - GWC-2 DIGITAL GRAPHIC WALL COVERING FOR GLASS DOOR (SEE BRANDING PACKAGE)

**FINISH PLAN KEY NOTES**

- COORDINATE FINAL FLOOR PATTERN WITH BRANDING PACKAGE
- ALL STAIR TREAD AND RISERS TO BE REPLACED WITH RA-1
- AREA TO BE SEALED CONCRETE
- CUSTOM PAINTED FLOOR GRAPHIC ON CONCRETE SURFACE: REFER TO BRANDING PACKAGE FOR FINAL DESIGN. APPLY CONCRETE SEALER COATING (SEALMASTER CONCRETE CLEAR)
- CUSTOM PAINTED DIGITAL PRINTED WALL GRAPHIC (REFER TO BRANDING PACKAGE)



**1 FINISH FLOOR PLAN - FIRST FLOOR - PART B**  
3/32" = 1'-0"

Order Plans @ [WWW.WLDILine.com](http://WWW.WLDILine.com)

DATE	BY	DATE
Job Number	801660.000	
Drawn	Author	
Checked	Checker	
Approved	Approver	

**FINISH FLOOR PLAN -  
FIRST FLOOR - PART B**

**SHEET NUMBER**

**A13-01B**