

CONSULTANTS

civil
Breadloaf Land Planning
15 Simpson St NW, Atlanta, GA 30308

structural
Lizaj+Case
1230 Peachtree St NE, Suite 2500, Atlanta, GA 30309

MEP
Matheson Dal & Associates
11285 Elkins Rd., Suite F3, Roswell, GA 30076

LANDSCAPING
Perkins+WILL
1315 Peachtree St NE, Atlanta, GA 30309

interior
Camacho
3103 Medlock Bridge Road, Norcross, GA 30071

OWNER
KIPP Metro Atlanta Schools
1445 Maynard Road NW, Atlanta, GA 30331

FACILITY

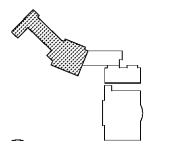
CONTRACTOR

PROJECT

**KIPP ATLANTA
COLLEGIATE - Addition
and Renovations**
98 Anderson Ave NW
Atlanta GA 30314



KEYPLAN



ISSUE CHART

RELEASED FOR CONSTRUCTION 06/07/2019

DATE	BY	DATE
Job Number	801660.000	
Drawn	Author	
Checked	Checker	
Approved	Approver	

**FLOOR PLAN - THIRD
FLOOR - PART A**

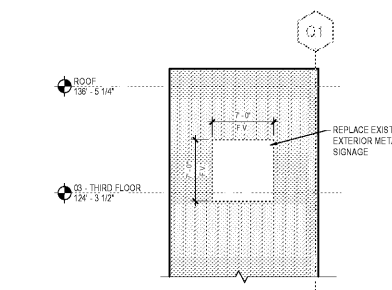
SHEET NUMBER

A11-03A

**FLOOR PLAN
GENERAL NOTES**

1. PARTITION TYPES ARE SCHEDULED IN THE A 61 SERIES. RE: A 01 SERIES "CODE COMPLIANCE PLANS" FOR GRAPHIC EXTENT OF FIRE RATED PARTITIONS. REFER TO PARTITION TYPE SCHEDULE FOR LOCATION OF SOUND ATTENUATION BLANKETS.
2. REFER TO SHEET 000-02 FOR ADDITIONAL GENERAL NOTES.
3. NOT USED.
4. DIMENSIONS SHOWN ON THE FLOOR PLANS FOR NEW CONSTRUCTION ARE TO THE FACE OF FINISH OF INTERIOR WALLS, TO CENTER LINE OF COLUMNS AND TO FACE OF CONCRETE OR MASONRY WALLS. UNLESS OTHERWISE INDICATED, DIMENSIONS IN RENOVATED AREAS ARE FROM FINISH FACE OF EXISTING WALLS TO FINISH FACE OF NEW STUD WALLS, UNLESS OTHERWISE INDICATED.
5. WHERE A ONE-HOUR PARTITION IS SHOWN AS A CONTINUATION OF A TWO-HOUR PARTITION OR COLUMN ENCASUREMENT, THE FACE OF THE GYPSUM BOARD SHALL BE ALIGNED. STUDS SHALL BE OFFSET AND ADDITIONAL LAYERS OF GYPSUM BOARD SHALL BE PROVIDED AS REQUIRED TO PROVIDE FACE ALIGNMENT OF GYPSUM BOARD.
6. SINKS SHALL BE MOUNTED SO THAT THE FACE OF THE SINK IS 1/8" MINIMUM TO THE FACE OF THE ADJACENT PARTITION, WALL, CASEWORK, ETC.
7. NOT USED.
8. SEE A-40-01, ARCHITECTURAL CHARGES, FOR TYPICAL MOUNTING HEIGHTS FOR PLUMBING FIXTURES AND TOILET ACCESSORIES.
9. WALLS AND PARTITIONS SHALL BE ACCOMPANIED BY A PAPER TOWEL DISPENSER 9" DIA. AND SINKS SHALL BE 18" DIA. UNLESS OTHERWISE NOTED ON THE FLOOR PLAN.
10. REFER TO A-40-01 SERIES FOR MISCELLANEOUS DETAILS.
11. PROVIDE A MINIMUM 1'-0" CLEAR FLOOR SPACE AT THE PUSH SIDE OF EVERY DOOR WITH A CLOSER. PROVIDE MINIMUM 1'-6" CLEAR AT THE PULL SIDE OF EVERY DOOR (EXCLUDING PATIENT BEDROOMS), UNLESS SPECIFICALLY DIMENSIONED, NOTED OR SHOWN OTHERWISE.
12. PROVIDE A 1'-4" WIDE CHASE BEHIND SINGLE-SIDED TOILETS, AND A 1'-8" WIDE CHASE BETWEEN BACK-TO-BACK TOILETS, FOR WALL-HUNG FIXTURES. FOR FLOOR-MOUNTED FIXTURES, PROVIDE A 6" STUD, MINIMUM.
13. ALL LAVATORIES AND SINKS SHALL BE MOUNTED A MINIMUM OF 1'-3" FROM THE CENTERLINE OF THE FIXTURE TO THE FINISHED FACE OF THE ADJACENT PARTITION.
14. PROVIDE WOOD BLOCKING AT ALL NEW HANDRAIL LOCATIONS.

2 EXTERIOR BUILDING MOUNTED SIGNAGE
1/8" = 1'-0"



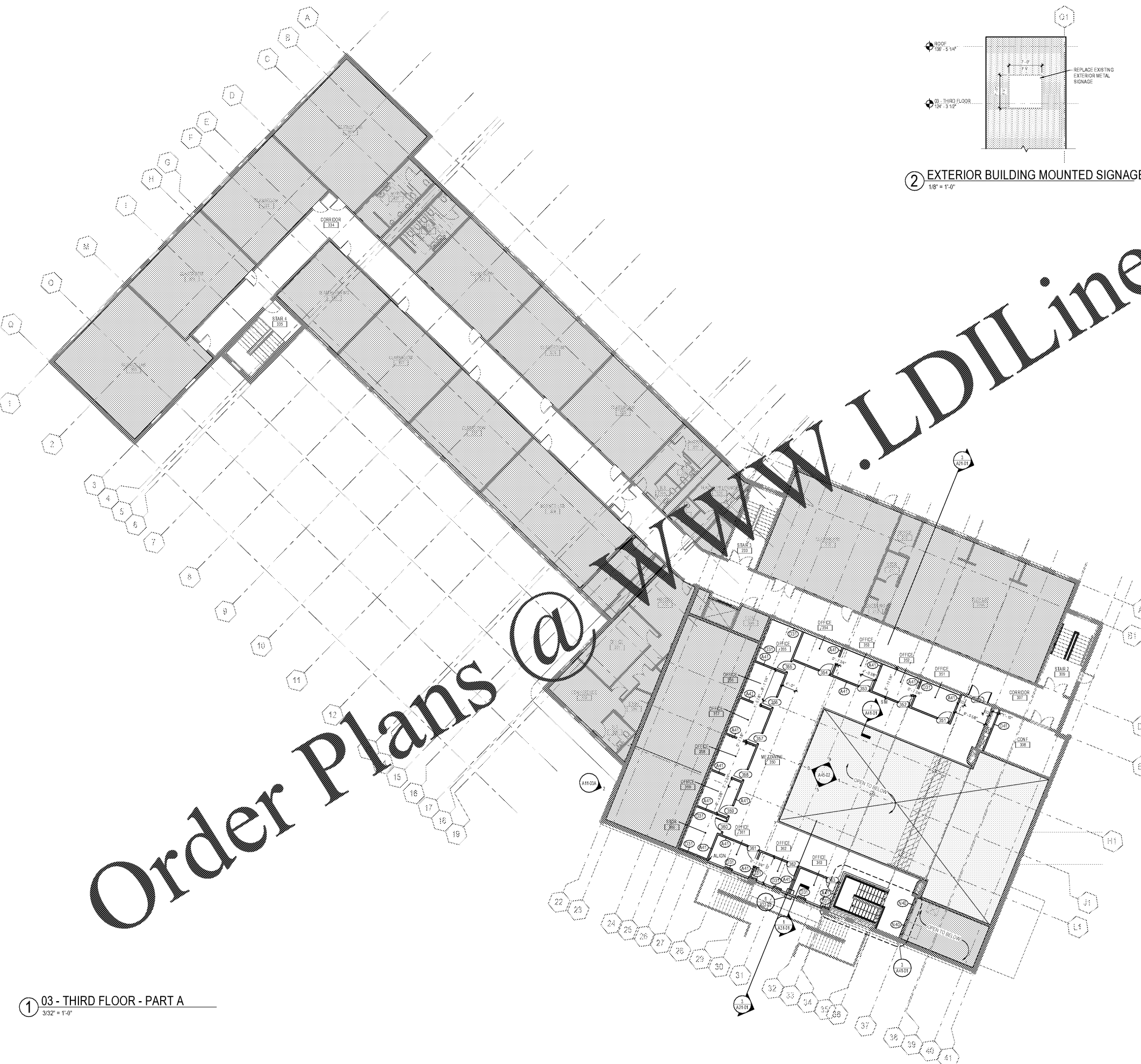
FLOOR PLAN LEGEND

- NEW PARTITION
- EXISTING WALL
- EXTERIOR ELEVATION TAG
- WALL SECTION TAG
- BUILDING SECTION TAG
- FIELD VERIFY
- EXTERIOR OPENING TAG (ALPHA)
- INTERIOR WINDOW TAG (NUMERICAL)
- DOOR TAG
- PARTITION TAG
- FLOOR DRAIN
- CURTAIN
- STRUCTURAL BRACING
- ENLARGED PLAN TAG
- AREA OPEN TO BELOW
- NOT IN SCOPE
- CONTRACTOR FURNISHED EQUIPMENT/ITEM
- OWNER FURNISHED EQUIPMENT/ITEM

- 1 4' X 8' MARKER BOARD
- 2 INTERACTIVE DISPLAY SYSTEM
- 3 4' X 8' MARKER BOARD
- 4 4' X 8' TACK BOARD
- 5 METAL SHELVING

FLOOR PLAN KEYNOTES

- 1 WALL TO BE CENTERED ON COLUMN LINE



1 03 - THIRD FLOOR - PART A
3/32" = 1'-0"