

**CONSULTANTS**

**civil**  
Broadiva Land Planning  
15 Simpson St NW, Atlanta, GA 30308

**structural**  
Uzun+Case  
1230 Peachtree St NE, Suite 2500, Atlanta, GA 30309

**MEP**  
Matheson Bai & Associates  
11285 Elkins Rd., Suite F3, Roswell, GA 30076

**LANDSCAPING**  
Perkins+WILL  
1315 Peachtree St NE, Atlanta, GA 30309

**FF&E**  
Camacho  
3103 Medlock Bridge Road, Norcross, GA 30071

**OWNER**  
KIPP Metro Atlanta Schools  
1445 Maynard Road NW, Atlanta, GA 30331

**FACILITY**

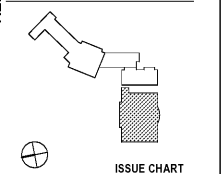
**CONTRACTOR**

**PROJECT**

**KIPP ATLANTA  
COLLEGIATE - Addition  
and Renovations**  
98 Anderson Ave NW  
Atlanta GA 30314



**KEYPLAN**



**ISSUE CHART**

DATE	ISSUE	DATE
Job Number	801660.000	
Drawn	Author	
Checked	Checker	
Approved	Approver	

**FLOOR PLAN - FIRST  
FLOOR - PART C**

**SHEET NUMBER**

**A11-01C**

**FLOOR PLAN  
GENERAL NOTES**

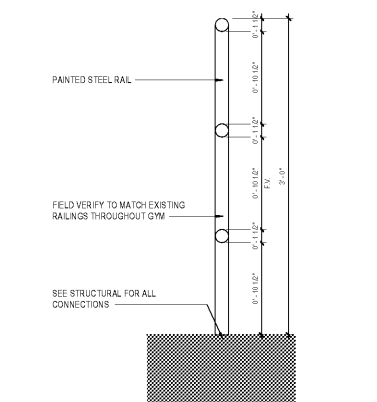
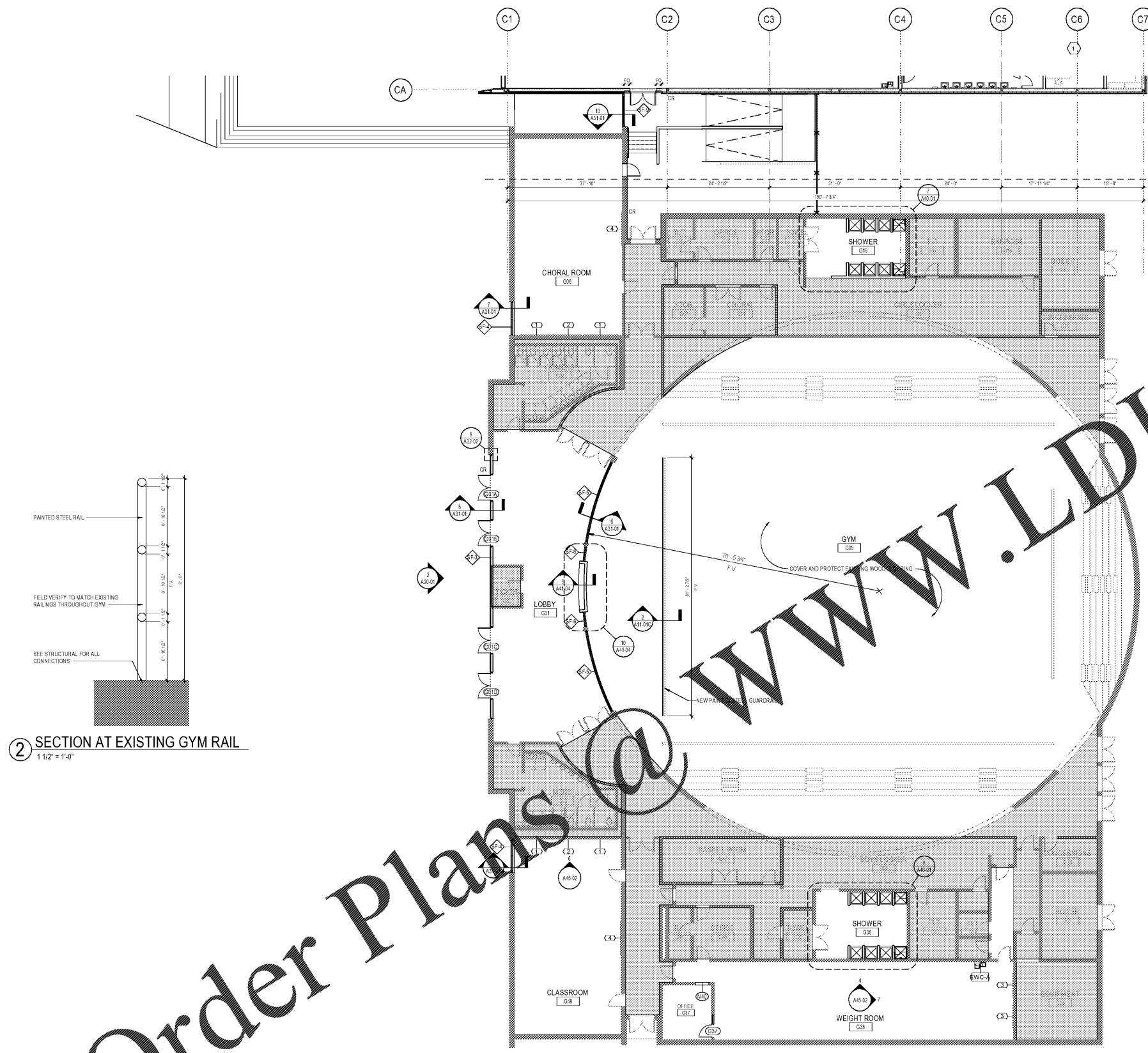
1. PARTITION TYPES ARE SCHEDULED IN THE A-81 SERIES. RE: A-01 SERIES "CODE COMPLIANCE PLANS" FOR GRAPHIC EXTENT OF FIRE-RATED PARTITIONS. REFER TO PARTITION TYPE SCHEDULE FOR LOCATION OF SOUND ATTENUATION BLANKETS.
2. REFER TO SHEET 000-02 FOR ADDITIONAL GENERAL NOTES.
3. NOT USED.
4. DIMENSIONS SHOWN ON THE FLOOR PLANS FOR NEW CONSTRUCTION ARE TO THE FACE OF FINISH OF INTERIOR WALLS, TO CENTER LINE OF COLUMNS AND TO FACE OF CONCRETE OR MASONRY WALLS, UNLESS OTHERWISE INDICATED. DIMENSIONS IN RENOVATED AREAS ARE FROM FINISH FACE OF EXISTING WALLS TO FINISH FACE OF NEW STUD WALLS, UNLESS OTHERWISE INDICATED.
5. WHERE A ONE-HOUR PARTITION IS SHOWN AS A CONTINUATION OF A TWO-HOUR PARTITION OR COLUMN ENCASUREMENT, THE FACE OF THE GYPSUM BOARD SHALL BE ALIGNED. STUDS SHALL BE OFFSET AND ADDITIONAL LAYERS OF GYPSUM BOARD SHALL BE PROVIDED AS REQUIRED TO PROVIDE FACE ALIGNMENT OF GYPSUM BOARD.
6. SINKS SHALL BE MOUNTED SO THAT THE FINISH FACE OF THE SINK IS 1-8" MINIMUM TO THE FACE OF THE ADJACENT PARTITION, CABINET, WALL, CASEWORK, ETC.
7. NOT USED.
8. SEE A-40-S1, ARCHITECTURAL FINISHES, FOR TYPICAL MOUNTING HEIGHTS, PLUMBING, FIXTURES AND ACCESSORIES.
9. LAVAS, TOWEL RACKS SHALL BE ACCOMPANIED BY A PAPER TOWEL DISPENSER 9" DIA. AND TISSUE DISPENSER 7" DIA. UNLESS OTHERWISE NOTED ON THE FLOOR PLAN.
10. REFER TO A-40-SERIES FOR MISCELLANEOUS DETAILS.
11. PROVIDE A MINIMUM 1'-0" CLEAR FLOOR SPACE AT THE PUSH SIDE OF EVERY DOOR WITH A CLOSER. PROVIDE MINIMUM 1'-6" CLEAR AT THE PULL SIDE OF EVERY DOOR (EXCLUDING PATIENT ROOMS), UNLESS SPECIFICALLY DIMENSIONED, NOTED OR SHOWN OTHERWISE.
12. PROVIDE A 1-4" WIDE CHASE BEHIND SINGLE-SIDED TOILETS, AND A 1-8" WIDE CHASE BETWEEN BACK-TO-BACK TOILETS, FOR WALL-HUNG FIXTURES. FOR FLOOR MOUNTED FIXTURES PROVIDE A 6" STUD, MINIMUM.
13. ALL LAVAS, TOWELS AND SINKS SHALL BE MOUNTED A MINIMUM OF 1'-3" FROM THE CENTERLINE OF THE FIXTURE TO THE FINISHED FACE OF THE ADJACENT PARTITION.
14. PROVIDE WOOD BLOCKING AT ALL NEW HANDRAIL LOCATIONS.

**FLOOR PLAN LEGEND**

- NEW PARTITION
- EXISTING WALL
- EXTERIOR ELEVATION TAG
- WALL SECTION TAG
- BUILDING SECTION TAG
- FV
- (ALPHA) EXTERIOR OPENING TAG
- (NUMERICAL) INTERIOR WINDOW TAG
- (300) DOOR TAG
- (A11) PARTITION TAG
- (D) FLOOR DRAIN
- (C1) CURTAIN
- (X) STRUCTURAL BRACING
- (X AXXX) ENLARGED PLAN TAG
- AREA OPEN TO BELOW
- NOT IN SCOPE
- CONTRACTOR FURNISHED EQUIPMENT ITEM
- OWNER FURNISHED EQUIPMENT ITEM
- 1 4' X 8' MARKER BOARD
- 2 INTERACTIVE DISPLAY SYSTEM
- 3 4' X 6' MARKER BOARD
- 4 4' X 8' TACK BOARD
- 5 METAL SHELVING

**FLOOR PLAN KEYNOTES**

- 1 WALL TO BE CENTERED ON COLUMN LINE



2 SECTION AT EXISTING GYM RAIL  
1/12" = 1'-0"

1 01 - FIRST FLOOR - PART - C  
3/32" = 1'-0"