



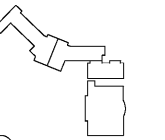
ISSUED FOR  
CONSTRUCTION

PROJECT

RELEASED FOR CONSTRUCTION 06/07/2019

KIPP ATLANTA  
COLLEGIATE - Addition  
and Renovations  
98 Anderson Ave NW  
Atlanta GA 30314

KEYPLAN



ISSUE CHART

DATE	REVISION	DATE
Job Number	BLP 18156	
Drawn	RLW	
Checked	AAW	
Approved	AAW	
	TITLE	

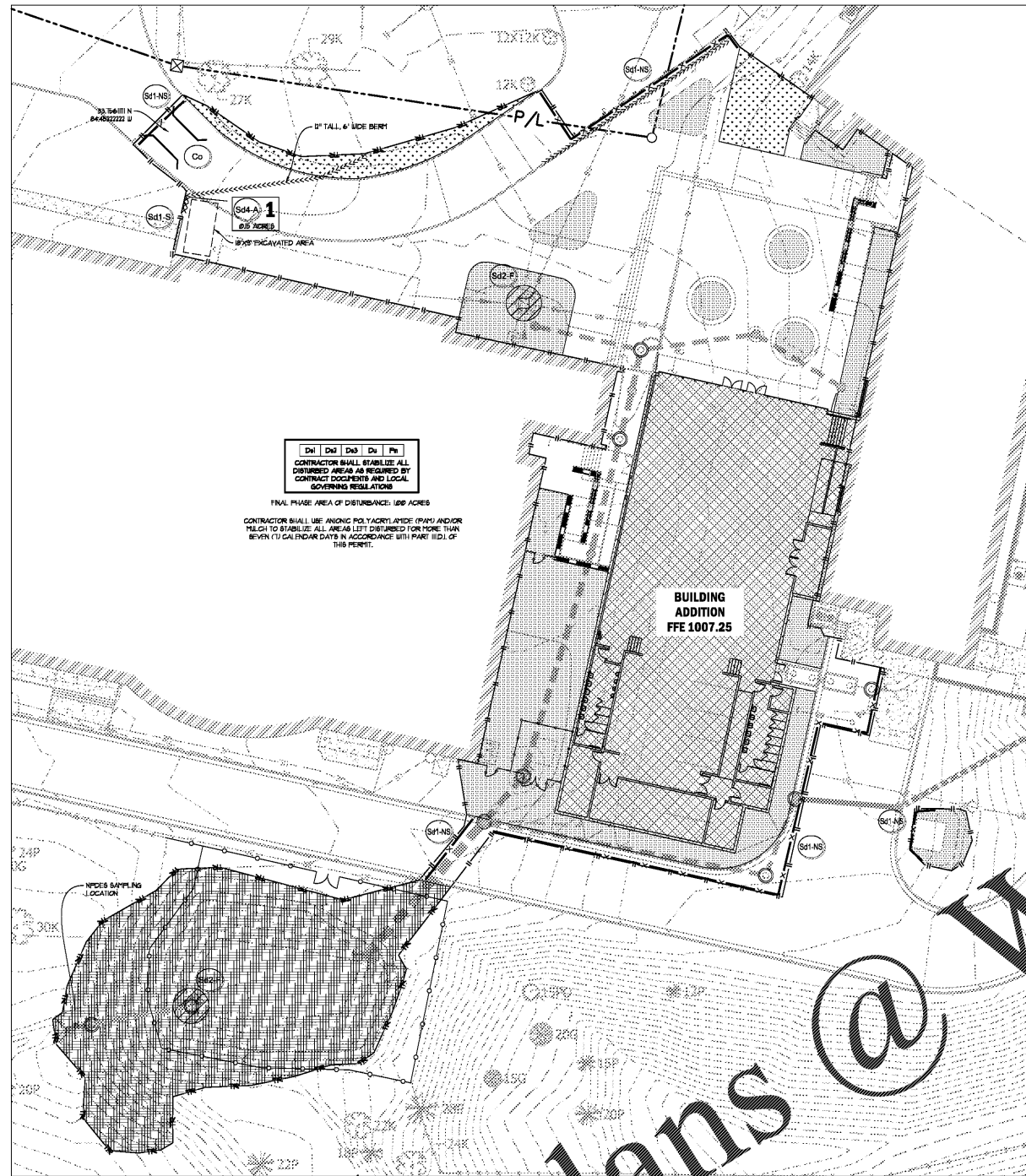
ESPC PLANS

SHEET NUMBER

C415

Copyright © 2018 Perkins+Will

- CITY OF ATLANTA EROSION CONTROL NOTES:**
1. EROSION AND SEDIMENT CONTROL MEASURES SHALL BE MAINTAINED AT ALL TIMES. IF FULL IMPLEMENTATION OF THE APPROVED PLAN DOES NOT PROVIDE FOR EFFECTIVE EROSION CONTROL, ADDITIONAL EROSION AND SEDIMENT CONTROL MEASURES SHALL BE IMPLEMENTED TO CONTROL OR TREAT THE SEDIMENT SOURCE.
  2. DISTURBED AREAS LEFT IDLE FOR A PERIOD GREATER THAN 14 DAYS SHALL BE STABILIZED WITH TEMPORARY GRASS OR MULCH. DISTURBED AREAS IDLE 30 DAYS SHALL BE STABILIZED WITH PERMANENT VEGETATION.
  3. SILT FENCE SHALL MEET THE REQUIREMENTS OF SECTION 111-TYPE C TEMPORARY SILT FENCE, OF THE GEORGIA DOT STANDARD SPECIFICATIONS, 1993 EDITION.
  4. EROSION CONTROL MEASURES SHALL BE INSPECTED AT LEAST WEEKLY, AFTER EACH RAIN AND REPAIRED AS NECESSARY.
  5. ADDITIONAL EROSION AND SEDIMENT CONTROL MEASURES SHALL BE INSTALLED IF DEEMED NECESSARY BY ON-SITE INSPECTION.



**FINAL PHASE AREA OF DISTURBANCE: 1.00 ACRES**

CONTRACTOR SHALL USE ANIONIC POLYACRYLAMIDE (PPAA) ANIONS MULCH TO STABILIZE ALL AREAS LEFT DISTURBED FOR MORE THAN SEVEN (7) CALENDAR DAYS IN ACCORDANCE WITH PART 11D.1 OF THIS PERMIT.

**ESPC PLAN - FINAL PHASE**

**GEORGIA UNIFORM CODING SYSTEM FOR SOIL EROSION AND SEDIMENT CONTROL PRACTICES**  
GEORGIA SOIL AND WATER CONSERVATION COMMISSION

STRUCTURAL PRACTICES			VEGETATIVE PRACTICES		
CODE	PRACTICE	MAP SYMBOL	CODE	PRACTICE	MAP SYMBOL
Cd	DIKE/DAM		Rd	ROAD	
Ch	CHANNEL STABILIZATION		Re	RETAINING WALL	
Co	CONSTRUCTION EXIT		Su	SURFACE ROUGHENING	
Cr	CONSTRUCTION ROAD STABILIZATION		Tc	TURBIDITY CURTAIN	
Dc	STREAM DIVERSION CHANNEL		Tp	TOPSOILING	
Di	DIVERSION		Tr	TREE PROTECTION	
Dn1	TEMPORARY DOWNDRAIN STRUCTURE		Wt	VEGETATED WATERWAY OR STORMWATER CONVEYANCE CHANNEL	
Dn2	PERMANENT DOWNDRAIN STRUCTURE		Sd1	SEDIMENT BARRIER	
Fr	FILTER RING		Sd2	INLET SEDIMENT TRAP	
Ga	GABION		Sd3	TEMPORARY SEDIMENT BASIN	
Gr	GRADE STABILIZATION STRUCTURE		Sd4	TEMPORARY SEDIMENT TRAP	
			Sk	FLOATING SURFACE SKIMMER	
			Spb	SEEP BERM	
			Sf	STORMWATER STABILIZATION (USING PERM. VEGETATION)	
			Ss	SLOPE STABILIZATION	
			Tac	TACKERS AND BRIDERS	
			Tac	TACKERS AND BRIDERS	

**ES&PC REVISIONS**

NO.	DATE	DESCRIPTION

THIS SHEET FOR EROSION CONTROL ONLY.

THE ESCAPE OF SEDIMENT FROM THE SITE SHALL BE PREVENTED BY THE INSTALLATION OF EROSION AND SEDIMENT CONTROL MEASURES AND PRACTICES PRIOR TO LAND DISTURBING ACTIVITIES.

EROSION CONTROL MEASURES SHALL BE MAINTAINED AT ALL TIMES. IF FULL IMPLEMENTATION OF THE APPROVED PLAN DOES NOT PROVIDE FOR EFFECTIVE EROSION CONTROL, ADDITIONAL EROSION AND SEDIMENT CONTROL MEASURES SHALL BE IMPLEMENTED TO CONTROL OR TREAT THE SEDIMENT SOURCE.

ANY DISTURBED AREA LEFT EXPOSED FOR A PERIOD GREATER THAN 14 CALENDAR DAYS SHALL BE STABILIZED WITH MULCH OR TEMPORARY GRASS.

ANY AMENDMENT OR REVISION TO THE ES&PC PLAN THAT WILL AFFECT BMPs WITH A HYDRAULIC COMPONENT MUST BE CERTIFIED BY THE DESIGN PROFESSIONAL.

**INITIAL EROSION CONTROL PHASE SUMMARY**

THE CONTRACTOR SHALL INSTALL INITIAL PERIMETER CONTROL (SILT FENCE) CONSTRUCTION EXIT, AND SEDIMENT STORAGE BMPs PRIOR TO THE PLAN PRIOR TO REGISTERING WITH INITIAL INSPECTION. LAND DISTURBANCE AND DEPOSITION OF EXISTING SITE MATERIALS SHALL BE STOPPED TO THE AREA SHOWN ON THIS PLAN UNTIL THE INITIAL INSPECTION HAS OCCURRED AND INSTALLATION OF THE INITIAL BMPs HAS BEEN APPROVED. ONCE INITIAL BMPs HAVE BEEN APPROVED, CONTRACTOR SHALL PROCEED TO IMMEDIATE PHASE. CONTRACTOR SHALL INSPECT AND MAINTAIN ALL INITIAL BMPs AND TRANSITION SITE TO INTERMEDIATE BMPs AS PHASING REQUIRES.

**INTERMEDIATE EROSION CONTROL PHASE SUMMARY**

THE CONTRACTOR SHALL MAINTAIN INITIAL PERIMETER CONTROL (SILT FENCE) CONSTRUCTION EXIT, AND INITIAL SEDIMENT STORAGE BMPs SHOWN ON PLAN PRIOR. BMPs SHALL REMAIN IN PLACE UNTIL IMPROVED DRAINAGE BASINS ARE PERMANENTLY ESTABLISHED. CONTRACTOR SHALL INSPECT AND MAINTAIN ALL INITIAL BMPs AND TRANSITION SITE TO INTERMEDIATE BMPs AS PHASING REQUIRES.

**SPILL CLEANUP & CONTROL PRACTICES**

- LOCAL, STATE & FEDERAL AGENCIES RECOMMENDED METHODS FOR SPILL CLEANUP WILL BE CLEARLY POSTED & PROCEDURES WILL BE MADE AVAILABLE TO SITE PERSONNEL.
- MATERIAL & EQUIPMENT NECESSARY FOR SPILL CLEANUP WILL BE KEPT IN THE MATERIAL STORAGE AREA. TYPICAL MATERIALS & EQUIPMENT INCLUDES BUT IS NOT LIMITED TO: BROOMS, DUSTPANS, ROPS, RAGS, GLOVES, SHOES, CAT LITTER, SAND, SODAS, & PROPERLY LABELED PLASTIC & METAL WASTE CONTAINERS.
- SPILL PREVENTION PRACTICES & PROCEDURES WILL BE REVIEWED AFTER A SPILL & ADJUSTED AS NECESSARY TO PREVENT FUTURE SPILLS.
- ALL SPILLS WILL BE CLEANED UP IMMEDIATELY UPON DISCOVERY. ALL SPILLS WILL BE REPORTED AS REQUIRED BY LOCAL, STATE & FEDERAL REGULATIONS.
- FOR SPILLS THAT IMPACT SURFACE WATER (E.G. BEEN ON SURFACE WATER) THE NATIONAL RESPONSE CENTER (NRC) WILL BE CONTACTED WITHIN 24 HOURS AT 1-800-426-7878.
- FOR SPILLS OF AN UNKNOWN AMOUNT, THE NATIONAL RESPONSE CENTER (NRC) WILL BE CONTACTED WITHIN 24 HOURS AT 1-800-426-7878.
- FOR SPILLS GREATER THAN 25 GALLONS & NO SURFACE WATER IMPACTS OCCUR, THE GEORGIA EPD WILL BE CONTACTED WITHIN 24 HOURS.
- FOR SPILLS LESS THAN 25 GALLONS & NO SURFACE WATER IMPACTS OCCUR, THE SPILL WILL BE CLEANED UP BY LOCAL AGENCIES WILL BE CONTACTED AS REQUIRED.
- THE CONTRACTOR SHALL NOTIFY THE LICENSED PROFESSIONAL WHO PREPARED THIS PLAN IF MORE THAN 500 GALLONS OF PETROLEUM IS STORED ON-SITE (THIS INCLUDES CAPACITIES OF EQUIPMENT) OR IF ANY ONE PIECE OF EQUIPMENT HAS A CAPACITY GREATER THAN 500 GALLONS. THE CONTRACTOR WILL NEED A SPILL PREVENTION PLAN & CONTINGENCY PLAN PREPARED BY THE LICENSED PROFESSIONAL.

**FINAL STABILIZATION LEGEND**

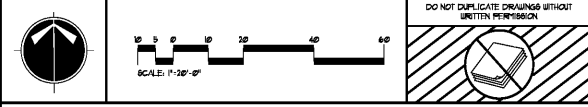
- Ds1 CLEAN FINE STRAW MULCH
- Ds3 NATIVE RECLAIM SOUL/EART MULCH (HYDROSEED WITH SFM OR APPROVED EQUAL)
- Ds4 BERMUDA SOG

**GSWCC LEVEL II CERTIFICATIONS**

I CERTIFY UNDER PENALTY OF LAW THAT THIS PLAN WAS PREPARED AFTER A SITE VISIT TO THE LOCATIONS DESCRIBED HEREIN BY MYSELF OR MY AUTHORIZED AGENT/EMPLOYEE SUPERVISOR.

I CERTIFY THAT THE PERMITTEE'S EROSION, SEDIMENTATION AND POLLUTION CONTROL PLAN PROVIDES FOR AN APPROPRIATE AND COMPREHENSIVE SYSTEM OF BEST MANAGEMENT PRACTICES REQUIRED BY THE GEORGIA WATER QUALITY CONTROL ACT AND THE OCCUPANT MANUAL FOR EROSION AND SEDIMENT CONTROL IN GEORGIA (MANUAL) PREPARED BY THE STATE SOIL AND WATER CONSERVATION COMMISSION AS OF JANUARY 1 OF THE YEAR IN WHICH THE LAND-USE/CONSTRUCTION ACTIVITY WAS PERMITTED, PROVIDES FOR THE SAMPLING OF THE RECEIVING WATERBODIES OR THE SAMPLING OF THE STORM WATER OUTFALLS AND THAT THE DESIGNED SYSTEM OF BEST MANAGEMENT PRACTICES AND SAMPLING METHODS IS SUFFICIENT TO MEET THE REQUIREMENTS CONTAINED IN THE MANUAL (PAGES PERMIT NO. 548-1000).

SIGNED: *[Signature]* DATE: xx-xx-xx  
CERTIFIED DESIGN PROFESSIONAL, ROGER L. WELLS  
GSWCC CERTIFICATION NO. 11-1-0000000001  
EXPIRATION DATE: 09-29-2025  
COMPANY: BREED LOVE LAND PLANNING, INC.



**CAUTION**

THE UTILITIES SHOWN ARE SHOWN FOR THE CONTRACTOR'S CONVENIENCE ONLY. THERE MAY BE OTHER UTILITIES NOT SHOWN ON THESE PLANS. THE DESIGN PROFESSIONAL ASSUMES NO RESPONSIBILITY FOR THE LOCATION, DEPTH AND TYPE OF UTILITIES SHOWN AND IT SHALL BE THE CONTRACTOR'S RESPONSIBILITY TO VERIFY THE LOCATION OF UTILITIES WITHIN THE LIMITS OF THE WORK. DAMAGE TO EXISTING UTILITIES BY THE CONTRACTOR FROM THEIR OPERATIONS, SHALL BE THE SOLE RESPONSIBILITY OF THE CONTRACTOR.

CONTRACTOR SHALL BE RESPONSIBLE TO SECURE THE SERVICES OF A PRIVATE UTILITY LOCATION FIRM DURING THE ENTIRE COURSE OF CONSTRUCTION. CONTRACTOR SHALL PAY FOR SAID SERVICES. CONTRACTOR SHALL IMMEDIATELY REPAIR ALL UTILITIES DAMAGED BY CONSTRUCTION ACTIVITIES, AT NO ADDITIONAL COST TO THE OWNER.

CONTRACTOR SHALL BE RESPONSIBLE FOR COMPACTION OF BACKFILL OF ALL UTILITY TRENCHES WITHIN SITE BOUNDARIES. THIS INCLUDES TRENCHES DUG AND BACKFILLED BY LOCAL UTILITIES SUCH AS POWER, GAS, TELEPHONE, ETC. CONTRACTOR SHALL PROVIDE ADDITIONAL BACKFILL AND COMPACTION AS NECESSARY, IF SETTLEMENT OCCURS.

