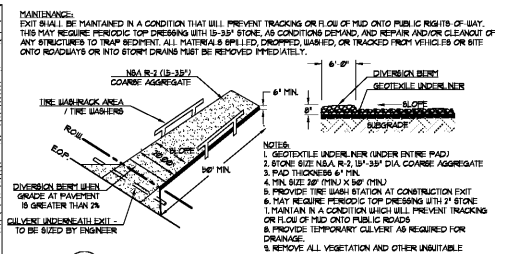
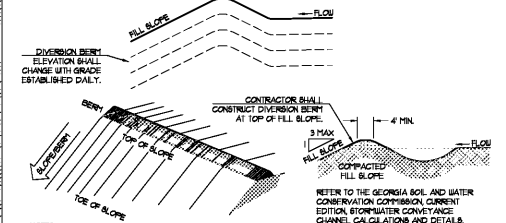


KIPP ATLANTA INITIAL PHASE							KIPP ATLANTA INITIAL PHASE										
Drainage Area (Ac)	Required Sediment Storage (CF)	Excavation Depth (Ft)	Slope	Required Surface Area (S.F.)	Excavation Length (Ft)	Excavation Width (Ft)	Provided Sediment Storage (CF)	Drainage Area (Ac)	Required Sediment Storage (CF)	Excavation Depth (Ft)	Slope	Required Surface Area (S.F.)	Excavation Length (Ft)	Excavation Width (Ft)	Provided Sediment Storage (CF)		
Sd4-A-1	0.15	278.1	2	2 TO 1	139.0	18	9	324	Sd2-E-5	0.23	410.1	2	2 TO 1	205.1	22	11	484
TOTAL STORAGE (C.F.)							324	TOTAL STORAGE (C.F.)							484		
KIPP ATLANTA INITIAL PHASE							KIPP ATLANTA INITIAL PHASE										
Sd4-A-2	0.06	147.7	2	2 TO 1	73.8	14	7	196	Sd2-E-6	0.24	431.6	2	2 TO 1	215.8	22	11	484
TOTAL STORAGE (C.F.)							196	TOTAL STORAGE (C.F.)							484		
KIPP ATLANTA INITIAL PHASE							KIPP ATLANTA INITIAL PHASE										
Sd2-E-3	0.43	775.7	2	2 TO 1	387.8	28	14	784									
TOTAL STORAGE (C.F.)							784										
KIPP ATLANTA INITIAL PHASE							KIPP ATLANTA INITIAL PHASE										
Sd2-E-4	0.16	288.8	2	2 TO 1			9										
TOTAL STORAGE (C.F.)							324										

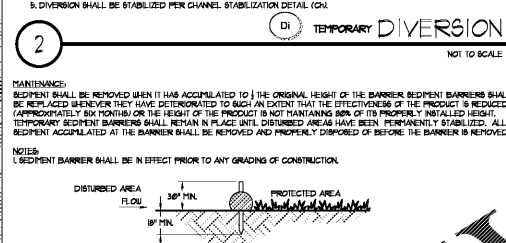
Order Plans



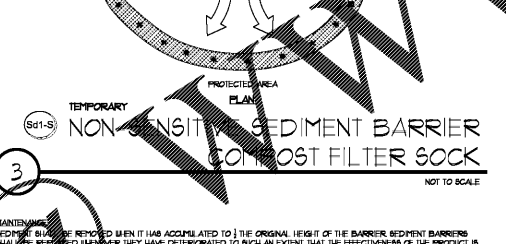
1 TEMPORARY CONSTRUCTION EXIT NOT TO SCALE



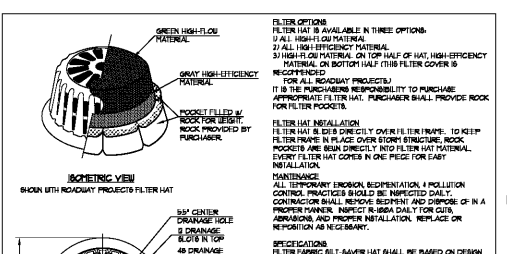
2 TEMPORARY DIVERSION NOT TO SCALE



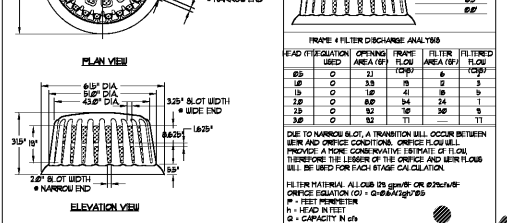
3 NON-SENSITIVE SEDIMENT BARRIER - COMPOST FILTER SOCK NOT TO SCALE



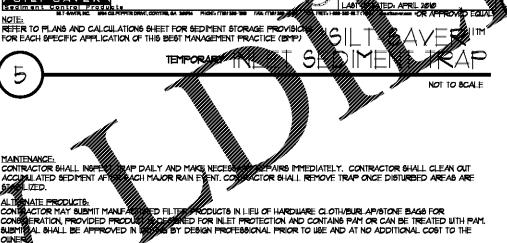
4 SENSITIVE SEDIMENT BARRIER - SILT FENCE NOT TO SCALE



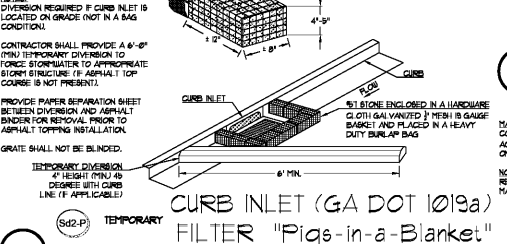
5 TEMPORARY OVERFLOW SEDIMENT TRAP NOT TO SCALE



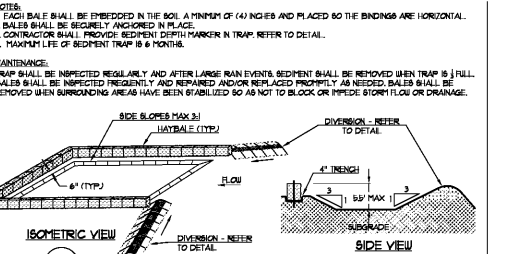
6 CURB INLET (GA DOT 1013a) FILTER 'Pigs-in-a-Blanket' NOT TO SCALE



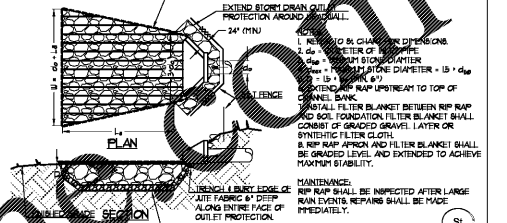
7 TRENCH DRAIN FILTER 'Pigs-in-a-Blanket' NOT TO SCALE



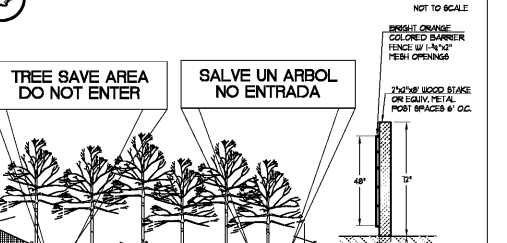
8 EXCAVATED INLET SEDIMENT TRAP NOT TO SCALE



9 TEMPORARY TREE PROTECTION NOT TO SCALE



10 GSWCC LEVEL II CERTIFICATIONS NOT TO SCALE



11 GSWCC CHECKLIST LEGEND NOT TO SCALE

PERKINS + WILL
1315 Peachtree St NE
Atlanta, GA 30309
404.873.2200
404.882.5520
www.perkinswill.com

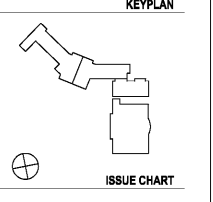


ISSUED FOR CONSTRUCTION

PROJECT

KIPP ATLANTA COLLEGIATE - Addition and Renovations
98 Anderson Ave NW
Atlanta GA 30314

RELEASED FOR CONSTRUCTION 06/07/2019



DATE	BY	DATE
Job Number	BLP 18156	
Drawn	RLW	
Checked	AAW	
Approved	AAW	
TITLE		

ESPC NOTES & DETAILS

SHEET NUMBER
C405

Copyright © 2018 Perkins+Will

GSWCC LEVEL II CERTIFICATIONS
I CERTIFY UNDER PENALTY OF LAW THAT THIS PLAN WAS PREPARED AFTER A SITE VISIT TO THE LOCATIONS DESCRIBED HEREIN BY MYSELF OR MY AUTHORIZED AGENT UNDER MY SUPERVISION.
I CERTIFY THAT THE PERMITTEE'S EROSION, SEDIMENTATION AND POLLUTION CONTROL PLAN PROVIDES FOR AN APPROPRIATE AND COMPREHENSIVE SYSTEM OF BEST MANAGEMENT PRACTICES REQUIRED BY THE GEORGIA WATER QUALITY CONTROL ACT AND THE DOCUMENT TRANSFER FOR PROTECTION AND SEDIMENT CONTROL IN GEORGIA (ANNUAL) PUBLISHED BY THE STATE SOIL AND WATER CONSERVATION COMMISSION AS OF JANUARY 1 OF THE YEAR IN WHICH THE LAND DISTURBING ACTIVITY WAS PERMITTED, PROVIDED FOR THE SAMPLING OF THE RECEIVING WATERWAY OR THE BARRING AND OF FRESH WATER OUTFALLS, AND THAT THE DESIGNED SYSTEM OF BEST MANAGEMENT PRACTICES AND SAMPLING METHODS IS EXPECTED TO MEET THE REQUIREMENTS CONTAINED IN THE GENERAL PERMITS PERMIT NO. GA04 10000.
SIGNED: [Signature] DATE: X-X-XXXX
CERTIFIED DESIGN PROFESSIONAL: ROGER L. WELLS
GSWCC CERTIFICATION NO. 11-1000003681
EXPIRATION DATE: 09-28-2019
COMPANY: BRETT DAVIS LAND PLANNING, INC.

GSWCC CHECKLIST LEGEND
00 GSWCC CHECKLIST ITEM NUMBER
DO NOT BREAK OR DUPLICATE
1. DO NOT DUPLICATE DRAWINGS WITHOUT PERMISSION.
2. READ THE SPECIFICATIONS, THE SET OF DRAWINGS AND SPECIFICATIONS DEFINE PROJECT SCOPE AND CONTRACT REQUIREMENTS. INDIVIDUAL SHEETS DERIVED FROM THE SET MAY NOT ADEQUATELY REFLECT ALL INFORMATION NEEDED TO SUITABLY COVER CERTAIN ITEMS. DO NOT SEPARATE THIS SET OF DRAWINGS INTO INDIVIDUAL SHEETS.
BREEDLOVE LAND PLANNING
Landscape Architects • Civil Engineers
www.landplanning.net