

GRADING PLAN



DRAINAGE PLAN

**PERKINS + WILL**

1315 Peachtree St NE  
Atlanta, GA 30309  
404.873.2300  
404.882.5820  
www.perkinswill.com



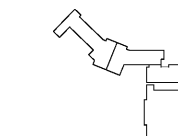
ISSUED FOR CONSTRUCTION

PROJECT

RELEASED FOR CONSTRUCTION 06/07/2019

**KIPP ATLANTA COLLEGIATE** - Addition and Renovations  
98 Anderson Ave NW  
Atlanta GA 30314

KEYPLAN



ISSUE CHART



SITE PLAN LEGENDS			
<p><b>SIGNAGE</b></p> <ul style="list-style-type: none"> <li>STOP SIGN - MUTCD STANDARD R8-1</li> <li>YIELD SIGN - MUTCD STANDARD R8-2</li> <li>NO PARKING SIGN - MUTCD STANDARD R8-3a</li> <li>DO NOT ENTER SIGN - MUTCD STANDARD R8-1</li> <li>ONE WAY SIGN - MUTCD STANDARD R8-1</li> </ul> <p><b>SITE GRADING</b></p> <ul style="list-style-type: none"> <li>PROPOSED INTERMEDIATE CONTOURS</li> <li>PROPOSED INDEX CONTOURS</li> <li>BENT</li> <li>HIGH POINT</li> <li>LOW POINT</li> <li>FLOW DIRECTION</li> <li>SLOPE</li> <li>SLOPE INDICATOR (H&amp;V)</li> <li>FINISHED GRADE AT TOP OF WALL</li> <li>FINISHED GRADE AT BOTTOM OF WALL</li> <li>TOP OF CURB ELEVATION</li> </ul>	<p><b>STORM DRAINAGE</b></p> <ul style="list-style-type: none"> <li>STORM DRAINAGE MANHOLE</li> <li>MANHOLE</li> <li>STORM DRAINAGE SECTION</li> <li>STANDARD</li> <li>SAFETY END SECTION</li> <li>STANDARD</li> <li>CATCH BASIN, GATE INLET</li> <li>SECTION BOX</li> <li>INLET - FEDERAL TOP</li> <li>CURB INLET - GDOT STANDARD WITH W/TYPE 'E' HOOD</li> <li>INLET</li> <li>INLET</li> <li>DOUBLE WING CATCH BASIN - GDOT STANDARD</li> <li>DOUBLE WING CATCH BASIN - GDOT STANDARD</li> <li>OUTLET CONTROL STRUCTURE</li> <li>TOP OF STRUCTURE ELEVATION</li> <li>THROAT OF STRUCTURE ELEVATION</li> <li>HDPE</li> <li>ALUMINUM STEEL TYPE 2 PIPE</li> <li>ASTM A53 TYPE 40 B</li> <li>APPROVED EQUAL CASTLE IRON PIPE</li> <li>REINFORCED CONCRETE PIPE (CLASS IV OR V) WITH RUBBER O-RING GASKET</li> <li>POLYETHYLENE GLYCOLIDE PIPE (GARDALL 48)</li> <li>INVERT ELEVATION - IN</li> <li>INVERT ELEVATION - OUT</li> <li>HYDRAULIC GRADE LINE</li> </ul>	<p><b>LAYOUT &amp; STAKING</b></p> <ul style="list-style-type: none"> <li>COORDINATE POINT</li> <li>POINT OF BEGINNING</li> <li>DETAIL REFERENCE (DETAIL SHEET)</li> <li>HANDRAIL AND/OR GUARDRAIL</li> <li>GGDOT TYPE AND VEHICLE GUARDRAIL</li> </ul> <p><b>PAVEMENT MARKINGS</b></p> <ul style="list-style-type: none"> <li>PAVING ARROW - STRAIGHT, WHITE</li> <li>PAVING ARROW - TURN, WHITE</li> <li>PAINTED CROSSWALK - WHITE</li> <li>ADA PARKING ACCESSIBLE - BLUE</li> <li>PAINTED WORD "STOP" - WHITE</li> <li>PAINTED WORD "YIELD" - WHITE</li> </ul> <p><b>GENERAL</b></p> <ul style="list-style-type: none"> <li>TIP - TREE PROTECTION FENCE</li> <li>LIMITS OF CONSTRUCTION</li> <li>EXISTING TREE TO BE REMOVED</li> </ul>	<p><b>SITE UTILITIES</b></p> <ul style="list-style-type: none"> <li>DOMESTIC WATER</li> <li>FIRE MAIN</li> <li>FIRE HYDRANT</li> <li>POST INDICATOR VALVE</li> <li>CONCRETE THRUST BLOCKING</li> <li>WATER VALVE</li> <li>GRAVITY SANITARY SEWER</li> <li>FORCE MAIN</li> </ul> <p><b>STORM STRUCTURE LEGEND</b></p> <ul style="list-style-type: none"> <li>HEADWALL</li> <li>DROP INLET</li> <li>INLET</li> <li>DOUBLE WING CATCH BASIN</li> <li>CATCH BASIN</li> <li>DOUBLE WING CATCH BASIN</li> <li>BEHIVE CATCH BASIN</li> <li>CATCH BASIN (GDOT 81D)</li> <li>FLARED END SECTION</li> <li>SAFETY END SECTION</li> <li>BEHIVE BOX</li> </ul>

**CAUTION**

DO NOT DUPLICATE DRAWINGS WITHOUT WRITTEN PERMISSION.

THE UTILITIES SHOWN ARE SHOWN FOR THE CONTRACTOR'S CONVENIENCE ONLY. THERE MAY BE OTHER UTILITIES NOT SHOWN ON THESE PLANS. THE DESIGN PROFESSIONAL ASSUMES NO RESPONSIBILITY FOR THE LOCATION SHOWN AND IT SHALL BE THE CONTRACTOR'S RESPONSIBILITY TO VERIFY THE LOCATION OF UTILITIES WITHIN THE LIMITS OF THE WORK. DAMAGE TO EXISTING UTILITIES BY THE CONTRACTOR FROM HIS OPERATIONS, SHALL BE THE SOLE RESPONSIBILITY OF THE CONTRACTOR.

CONTRACTOR SHALL BE RESPONSIBLE TO SECURE THE SERVICES OF A PRIVATE UTILITY LOCATION FIRM DURING THE ENTIRE COURSE OF CONSTRUCTION. CONTRACTOR SHALL PAY FOR SAID SERVICES. CONTRACTOR SHALL IMMEDIATELY REPAIR ALL UTILITIES DAMAGED BY CONSTRUCTION ACTIVITIES, AT NO ADDITIONAL COST TO THE OWNER.

CONTRACTOR SHALL BE RESPONSIBLE FOR COMPACTION OF BACKFILL OF ALL UTILITY TRENCHES WITHIN SITE BOUNDARIES. TRENCHES SHALL BE BACKFILLED BY LOCAL UTILITIES, SUCH AS POWER, GAS, TELEPHONE, ETC. CONTRACTOR SHALL PROVIDE ADDITIONAL BACKFILL AND COMPACTION AS NECESSARY, IF SETTLEMENT OCCURS.

**811** Know what's below. Call before you dig. Dial 811. Or Call 800-282-7411

**BREED LOVE LAND PLANNING**

Landscape Architects • Civil Engineers  
www.landplanning.net

**SITE GRADING & DRAINAGE PLANS**

SHEET NUMBER  
**C200**

Copyright © 2018 Perkins+Will