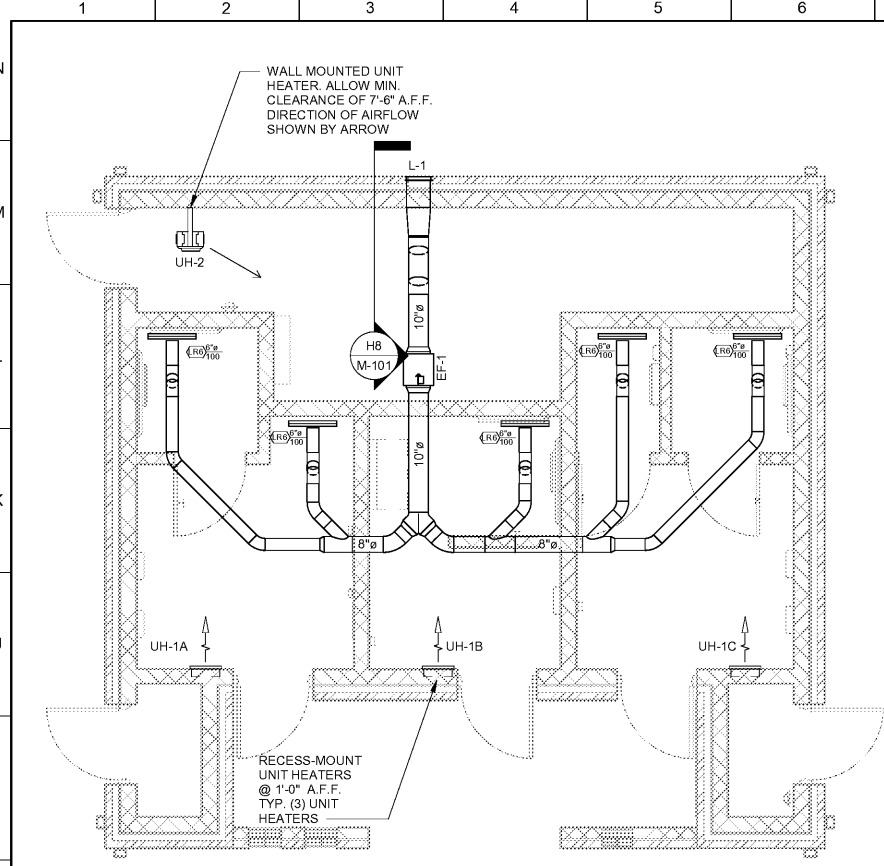
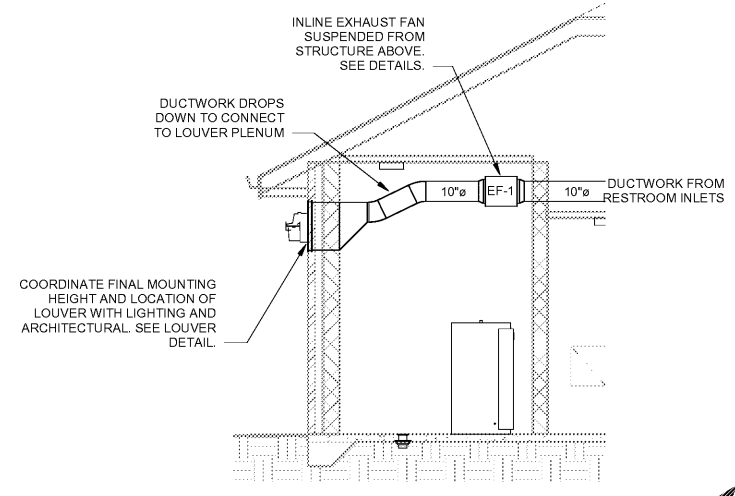


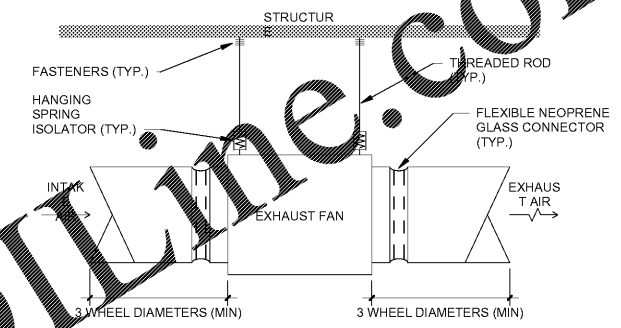
3/28/2018 10:31:06 AM P:\COMMERCIAL\2016 PROJECT IN-BOX\2016-139 New Restroom at Durr Field\5. Drawing Info.c. Rev\16139 Durr Field Restrooms - MECH.rvt
 © Copyright 2016 by Croft & Associates, PC. All rights reserved. This document is property of Croft & Associates, PC. It is to be used only for the specific project referred to or identified herein and is not to be used on other projects, in whole or in part, except by the express written agreement of Croft & Associates, PC.



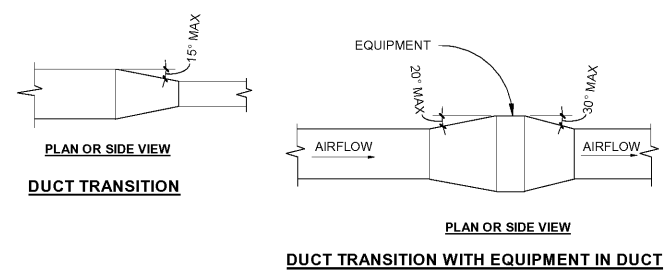
H1 M-101 MECHANICAL PLAN - FIRST FLOOR
1/4" = 1'-0"



H8 M-101 EXHAUST FAN SECTION VIEW
1/4" = 1'-0"

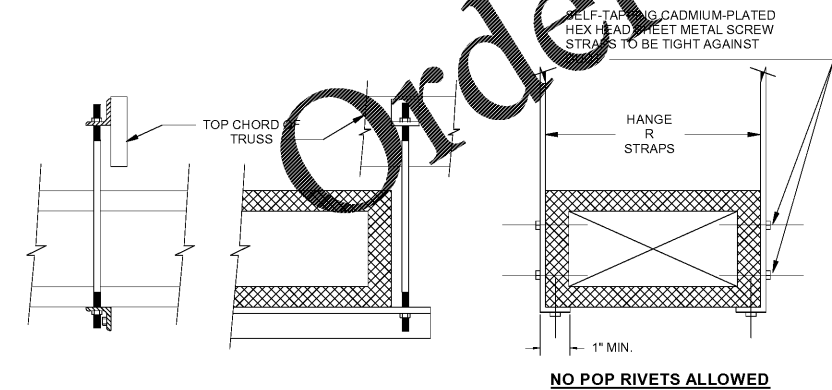


I14 M-101 EXHAUST FAN HANGER DETAIL
NOT TO SCALE

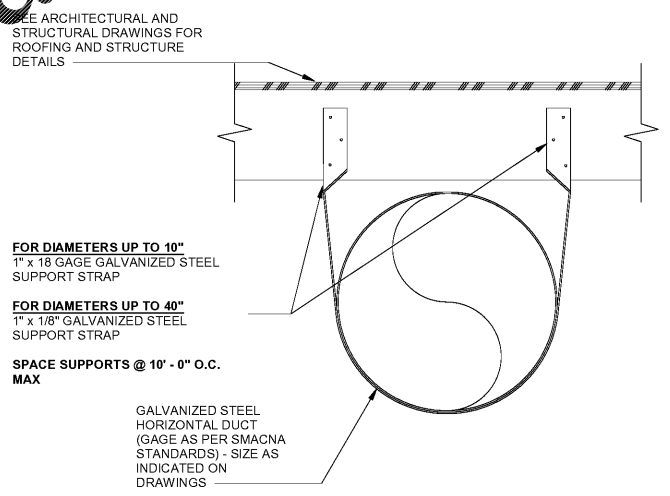


F14 M-101 DUCT TRANSITION DETAIL
NOT TO SCALE

HANGER SIZES FOR RECTANGULAR DUCT			
MAX SIDE	HANGER	HORIZONTAL SUPPORT ANGLE	MAXIMUM SAG
30"	1" x 18" GAGE STRAP	NONE REQUIRED	10"
36"	1/4" ROUND ROD	1-1/2" x 1-1/2" x 1/8"	8" @ 0"
48"	1/4" ROUND ROD	2" x 2" x 1/8"	7" @ 0"
60"	5/16" ROUND ROD	2" x 2" x 1/8"	6" @ 0"
84"	3/8" ROUND ROD	2" x 2" x 1/8"	6" @ 0"



A2 M-101 DUCT STRAP HANGER DETAIL
NOT TO SCALE



A12 M-101 AIR LOUVER & DAMPER DETAIL
NOT TO SCALE

GENERAL NOTES - NEW CONSTRUCTION:

- THESE DRAWINGS ARE SCHEMATIC, AND ARE NOT REPRESENTATIVE OF ALL POTENTIAL CONDITIONS. CONTRACTOR IS RESPONSIBLE FOR COORDINATION WITH ALL OTHER DISCIPLINES TO ENSURE PROPER INSTALLATION OF ALL SYSTEMS AND EQUIPMENT.
- CONTRACTOR SHALL MAINTAIN A VALID LICENSE TO PERFORM MECHANICAL WORK IN THE STATE OF GEORGIA. REFER TO ARCHITECTURAL CEILING PLAN FOR EXACT LOCATION OF ALL CEILING-MOUNTED EQUIPMENT AND AIR DISTRIBUTION DEVICES.
- COORDINATE VOLTAGE AND PHASE OF EACH PIECE OF EQUIPMENT WITH THE ELECTRICAL CONTRACTOR PRIOR TO PURCHASE.
- CONTRACTOR SHALL MAINTAIN MINIMUM 10'-0" DISTANCE BETWEEN ALL EXHAUST / VENT OUTLETS AND OUTSIDE AIR INTAKES. COORDINATE WITH PLUMBING AND ROOFING CONTRACTORS PRIOR TO INSTALLATION.
- REFER TO MANUFACTURER'S INSTALLATION CLEARANCE REQUIREMENTS FOR ALL HVAC EQUIPMENT. CONTRACTOR SHALL COORDINATE REQUIRED CLEARANCES WITH ALL TRADES PRIOR TO BEGINNING WORK.



Croft & Associates
 3400 Blue Springs Road, Suite 200
 Kennesaw, Georgia 30144
 770.529.7714 (p) 770.529.7716 (f)
 www.croftandassociates.com



03/28/2018
 In accordance with GA R&R Dept.
 180 §12 - Sealing of Documents

OWNER
 CITY OF ACWORTH
 4415 SENATOR RUSSELL AVENUE
 ACWORTH, GEORGIA 30101



DURR FIELD
 4757 - 4805 SCHOOL STREET
 ACWORTH, GEORGIA 30101

No.	Date	Description
0	2018-03-12	ISSUED FOR CONSTRUCTION
	2016-07-22	100% SET
A	2016-07-08	REVIEW SET

ISSUANCE

PROJECT NUMBER
16139
 DRAWN: JEB CHECKED: JKM
 SHEET TITLE
MECHANICAL PLAN

SHEET NO.
M-101