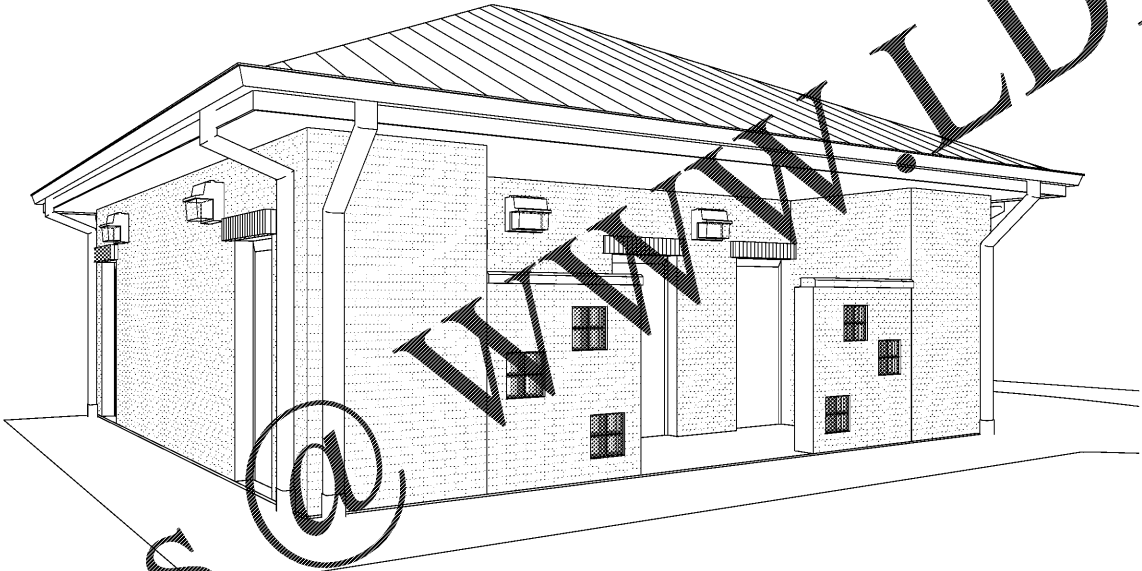


THIS SHEET PLOTS  
ON 22" x 34" ANSI D  
0 1/2" 1" 2" 3"

3/12/2018 5:57:06 PM P:\COMMERCIAL\2016 PROJECT IN-BOX\2016-139 New Restroom at Durr Field\5. Drawing Info.c. Revit\16139 Durr Field Restrooms.rvt  
© Copyright 2016 by Croft & Associates, P.C. All rights reserved. This document is property of Croft & Associates, P.C. It is to be used only for the specific project referred to or identified herein and is not to be used on other projects, in whole or in part, except by the express written agreement of Croft & Associates, P.C.

# A NEW RESTROOM BUILDING FOR THE CITY OF ACWORTH AT DURR FIELD ACWORTH, GEORGIA



**PROJECT DATA**

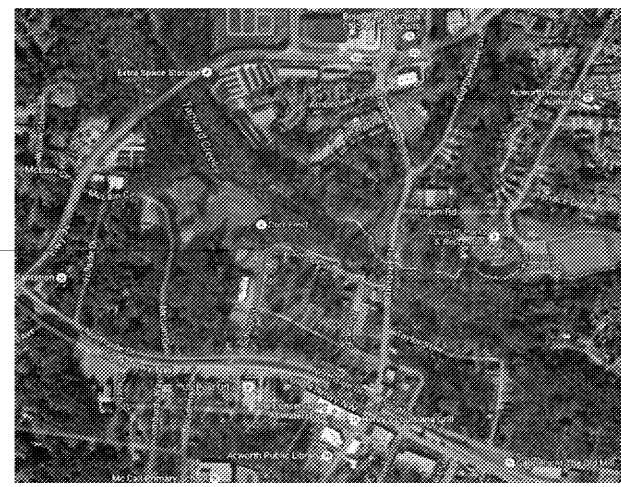
SCOPE: NEW RESTROOM FACILITY

**APPLICABLE CODES:**

- INTERNATIONAL BUILDING CODE, 2012 ED., WITH GA AMENDMENTS (2015)
- INTERNATIONAL FIRE CODE, 2012 ED., WITH GA AMENDMENTS (2015)
- INTERNATIONAL MECHANICAL CODE, 2012 ED., WITH GA AMENDMENTS (2014)
- INTERNATIONAL PLUMBING CODE, 2012 ED., WITH GA AMENDMENTS (2015)
- INTERNATIONAL FUEL GAS CODE, 2012 ED., WITH GA AMENDMENTS (2015)
- INTERNATIONAL ENERGY CONSERVATION CODE, 2012 ED., WITH GA SUPPLEMENTS & AMENDMENTS (2011) (2012)
- THE ADOPTED EDITION OF THE NFPA CODES AND STANDARDS AS MODIFIED BY THE GA STATE FIRE MARSHAL
- INTERNATIONAL FIRE CODE, 2012 ED.
- NFPA 10, 2013 ED., STANDARD FOR PORTABLE FIRE EXTINGUISHERS
- NFPA 13, 2013 ED., STANDARD FOR THE INSTALLATION OF SPRINKLER SYSTEMS
- NFPA 70, 2011 NATIONAL ELECTRICAL CODE
- NFPA 101, 2012 LIFE SAFETY CODE
- ADA STANDARDS FOR ACCESSIBLE DESIGN AS ADOPTED BY OCGA TITLE (S) 25 AND 30

**BUILDING INFORMATION**

OCCUPANCY: B - BUSINESS  
OCCUPANCY LOAD: 8  
TYPE OF CONSTRUCTION: II (000), II-B  
BUILDING CODE HEIGHT LIMIT: 2 STORY  
BUILDING HEIGHT (ACTUAL): 1 STORY  
TOTAL BUILDING AREA: 764 SQ. FT.  
RESTROOMS: 380 SQ. FT.



PROJECT SITE

**PROJECT DIRECTORY**

**OWNER**

CITY OF ACWORTH  
4415 SENATOR RUSSELL AVENUE  
ACWORTH, GA 30101  
JAMES ALBRIGHT, DIRECTOR PARKS,  
RECREATION AND COMMUNITY  
770-917-1234  
JALBRIGHT@ACWORTH.ORG

**ARCHITECT**

CROFT & ASSOCIATES, P.C.  
3400 BLUE SPRINGS ROAD, SUITE 200  
KENNESAW, GA 30144  
770.529.7714  
ANTHONY W. IORILLO, A.I.A.  
AIORILLO@CROFTAE.COM

**STRUCTURAL ENGINEER**

DUNLAP ASSOCIATES  
3440 BLUE SPRINGS ROAD, SUITE 503-B  
KENNESAW, GA 30144  
678-581-1000  
STEVE DUNLAP, P.E.  
SDUNLAP@DA-ENGINEERS.COM

**MEP ENGINEER**

CROFT & ASSOCIATES, P.C.  
3400 BLUE SPRINGS ROAD, SUITE 200  
KENNESAW, GA 30144  
770.529.7714  
JEFFREY MORGAN, P.E.  
JMORGAN@CROFTAE.COM



**Croft & Associates**  
3400 Blue Springs Road, Suite 200  
Kennesaw, Georgia 30144  
770.529.7714 (p) 770.529.7716 (f)  
www.croftandassociates.com



**OWNER**

CITY OF ACWORTH  
4415 SENATOR RUSSELL AVENUE  
ACWORTH, GEORGIA 30101



**DURR FIELD**

4757 - 4805 SCHOOL STREET  
ACWORTH, GEORGIA 30101

No.	Date	Description
0	2018-03-12	ISSUED FOR CONSTRUCTION
	2016-07-22	100% Set
B	2016-07-15	IN-HOUSE REVIEW
ISSUANCE		

PROJECT NUMBER  
**16139**

DRAWN: LAP CHECKED: AWI

SHEET TITLE  
**COVER SHEET**

SHEET NO.  
**G-001**