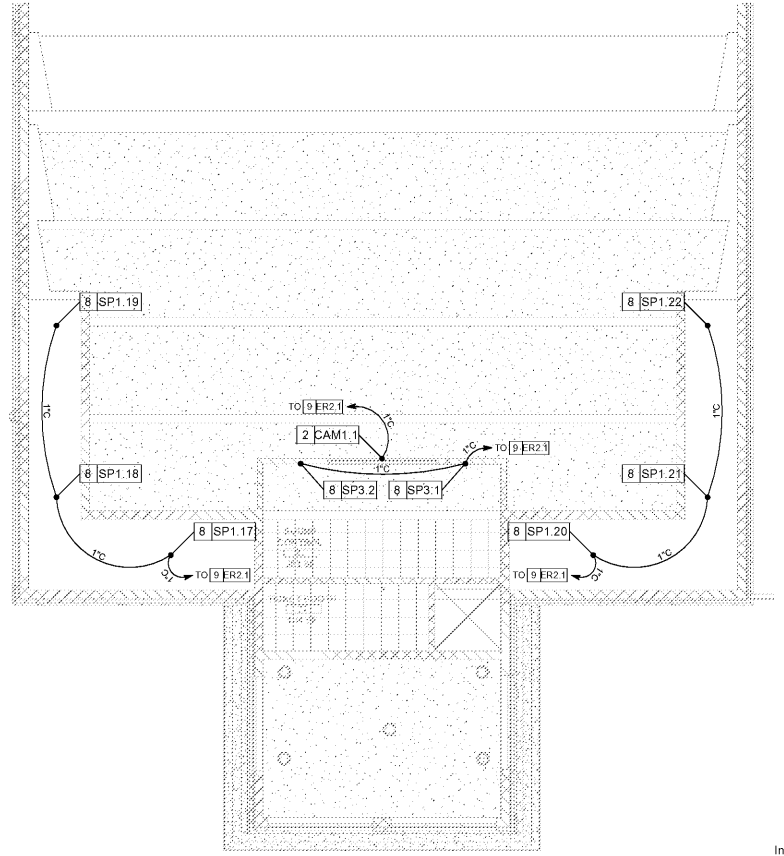
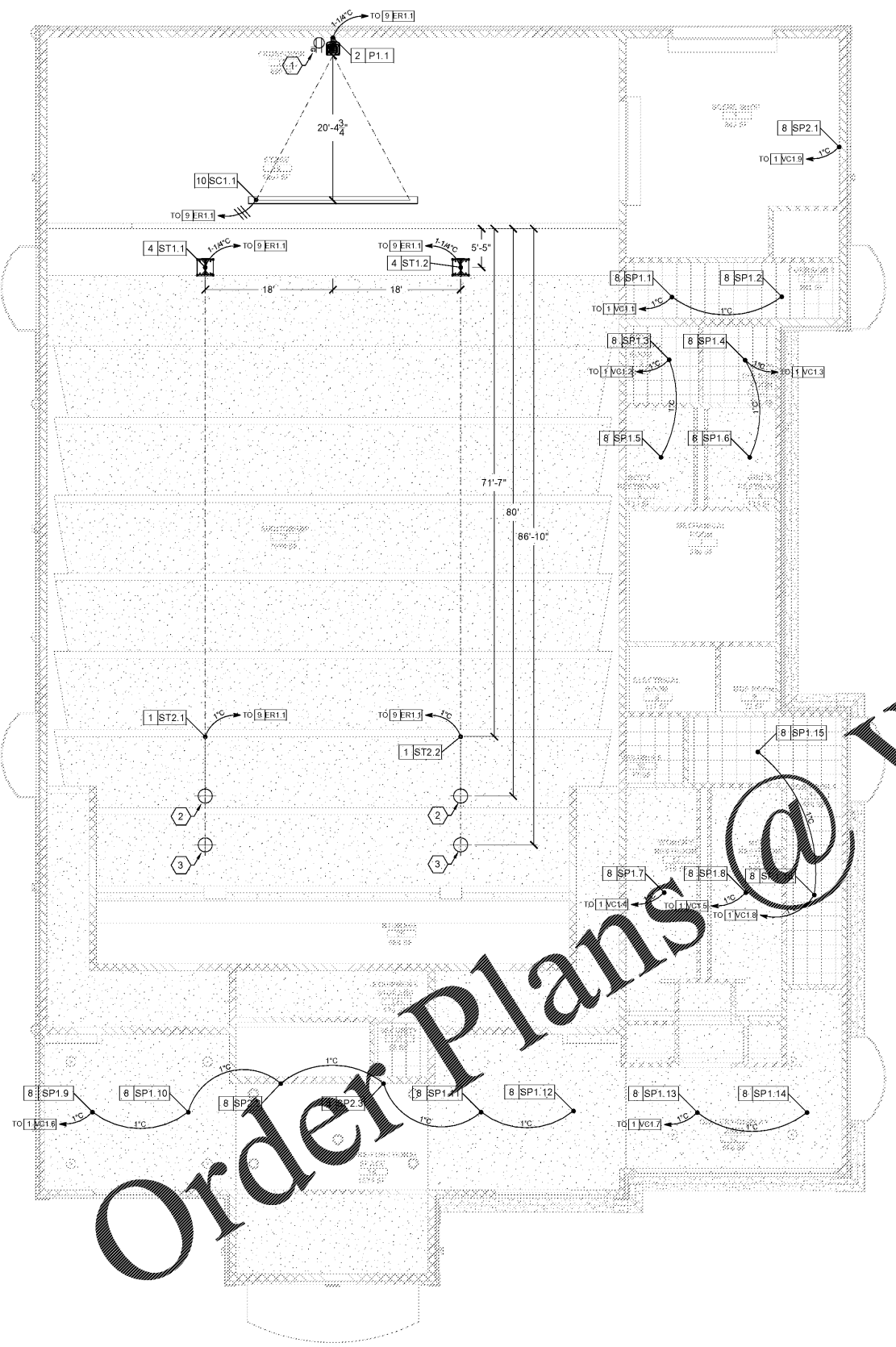


- SHEET KEY NOTES**
- (QTY. OF 1) 20A 120VAC CIRCUIT ON DUPLEX RECEPTACLE MOUNTED ON WALL 13'-10" A.F.F. BY E.C.
 - CROSSHAIR SYMBOL INDICATES SPEAKER AIMING POINT OF TOP ARRAY SPEAKER IN CLUSTER
 - CROSSHAIR SYMBOL INDICATES SPEAKER AIMING POINT OF DELAY SPEAKER



1 FIRST FLOOR - AV REFLECTED CEILING PLAN
1/8" = 1'-0"

2 SECOND FLOOR - AV REFLECTED CEILING PLAN
1/8" = 1'-0"

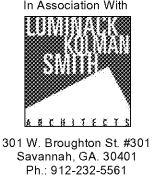
NOT RELEASED FOR CONSTRUCTION
FACILITY CODE: 625-0312

JOB NAME: BEACH HIGH SCHOOL AUDITORIUM
3001 Hopkins Street
Savannah, Georgia 31405
Chatham County Public Schools System

J. W. ROBINSON & ASSOCIATES, INC.
ARCHITECTS • INTERIOR DESIGNERS • URBAN PLANNERS •
1020 RALPH DAVID ABERNATHY BLVD., S.W., ATLANTA, GEORGIA 30310
PHONE: (404) 753-4129 FAX: (404) 753-4435



NO.	DATE	DESCRIPTION	BY	CHKD.
1	SEP 4, 2018	100% SCHEMATIC DESIGN		
2	OCT 29, 2018	100% DESIGN DEVELOPMENT		
3	APRIL 5, 2019	80% CONSTRUCTION DOCS		
4	MAY 15, 2019	100% CONSTRUCTION DOCS		



301 W. Broughton St. #301
Savannah, GA 30401
Ph.: 912-232-5561

201801

SHEET NUMBER
EPS-2.1