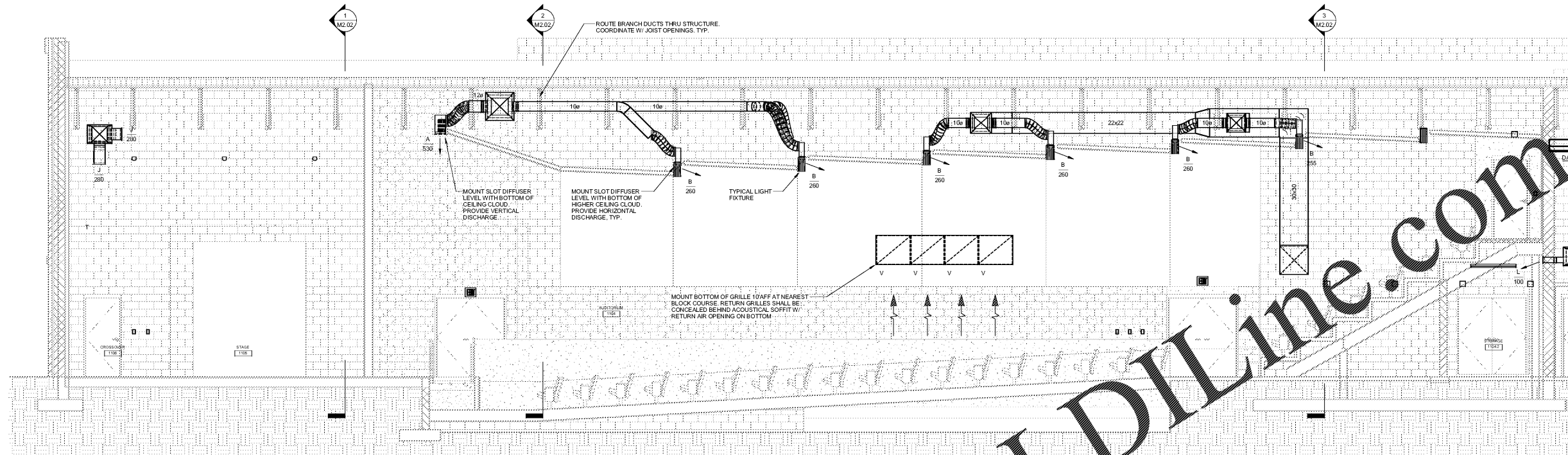
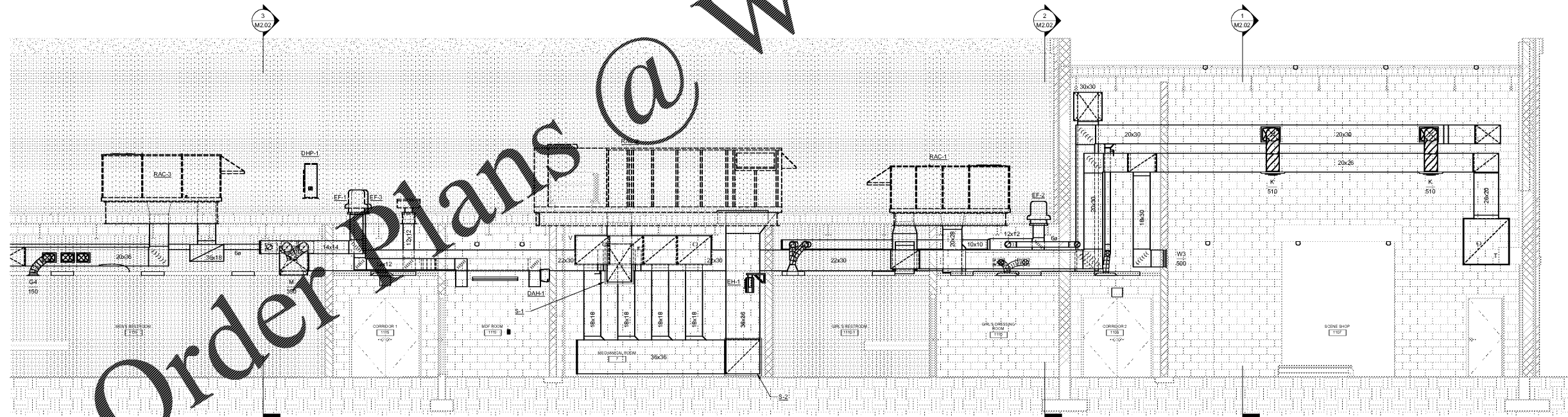


A  
B  
C  
D  
E  
F  
G  
H  
I  
J  
K  
L  
M  
N

1 2 3 4 5 6 7 8 9 10 11 12 13 14 15 16 17 18 19



**1 MECHANICAL SECTION - AUDITORIUM 1**  
SCALE: 1/4" = 1'-0"



**2 MECHANICAL SECTION - LOW ROOF**  
SCALE: 1/4" = 1'-0"

Order Plans @

WWW.LDILINE.COM



JOB NAME: BEACH HIGH SCHOOL AUDITORIUM  
3001 Higgins Street  
Savannah, Georgia 31405  
Chatham County Public School System  
SHEET NAME: MECHANICAL SECTIONS

**J. W. ROBINSON & ASSOCIATES, INC.**  
ARCHITECTS • INTERIOR DESIGNERS • URBAN PLANNERS •  
1020 RALPH DAVID ABERNATHY BLVD., S.W., ATLANTA, GEORGIA 30310  
PHONE: (404) 753-4129 FAX: (404) 753-4435



In Association With  
**LUMMUS & SMITH**  
ARCHITECTS  
301 W. Broughton St. #301  
Savannah, GA. 30401  
Ph: 912-232-5561

DATE	DESCRIPTION
MAY 17, 2019	100% CONST. DOCUMENTS
APRIL 5, 2019	80% CONST. DOCUMENTS
OCT. 29, 2018	100% DESIGN DEVELOPMENT
DATE	DESCRIPTION
APRIL 5, 2018	100% SCHEMATIC DESIGN
CHECKED: JFS	DESIGNED: JFS
DRAWN: ANM	

201801

SHEET NUMBER  
**M2.01**

RELEASED FOR CONSTRUCTION  
FACILITY CODE: 625-0312