



JOB NAME: BEACH HIGH SCHOOL AUDITORIUM  
 SHEET NAME: TYPICAL DETAILS

J. W. ROBINSON & ASSOCIATES, INC.  
 ARCHITECTS • INTERIOR DESIGNERS • URBAN PLANNERS  
 1020 RALPH DAVID ABERNATHY BLVD., S.W., ATLANTA, GEORGIA 30310  
 PHONE: (404) 753-4129 FAX: (404) 753-4435

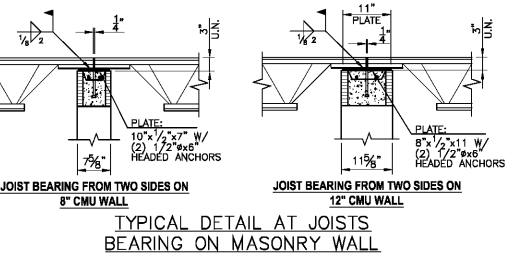
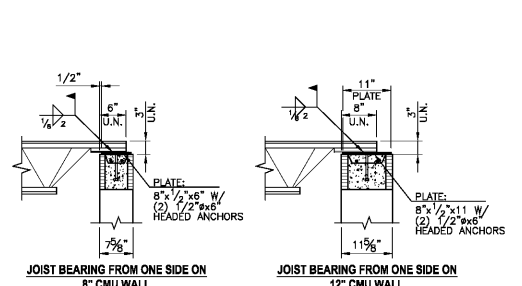


DATE: SEPT. 4, 2018	100% SCHEMATIC DESIGN
DATE: APR. 5, 2018	80% DESIGN DEVELOPMENT
DATE: MAY 17, 2018	100% CONST. DOCUMENTS

201801  
 SAUSSY ENGINEERING

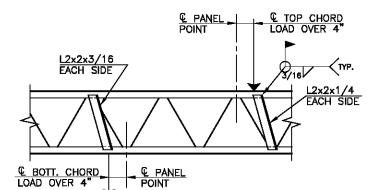
RELEASED FOR CONSTRUCTION  
 FACILITY CODE: 625-0312

S4.2



**TYPICAL DETAIL AT JOISTS BEARING ON MASONRY WALL**

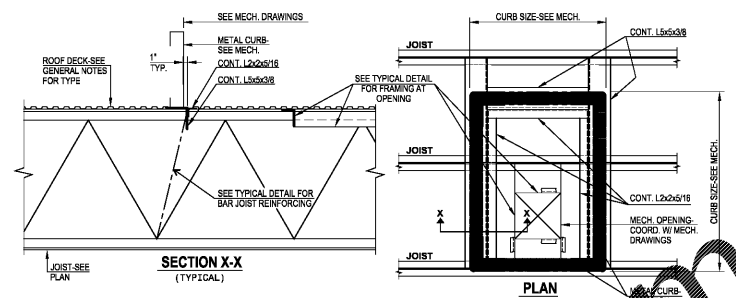
NOTE:  
 1. WHERE DOUBLE JOIST (DJ) INDICATED ON PLAN, INCREASE PLATE DIMENSION PARALLEL TO WALL TO 12" (MIN.) AND PROVIDE (3) 1/2" Ø 8"x2" ANCHORS.  
 2. EXTEND JOIST BOTTOM CHORDS TO 1/2" FROM FACE OF WALL WHERE REQ'D. FOR CEILING SUPPORT. COORDINATE WITH ARCHITECTURAL DRAWINGS.  
 3. WHERE CHANNEL BLOCK TYPE BOND BEAMS ARE SHOWN CHANGE ANCHORS TO 1/2" Ø 4"x2".



NOTE:  
 ADD WEB REINFORCING WHEN LOADS EXCEED 150 LB. AND ARE LOCATED OVER 4" FROM A WEB PANEL. LOADS SHALL BE DETERMINED BY CONTRACTOR FOR EQUIPMENT FURNISHED AND SHALL BE SHOWN ON SHOP DRAWINGS.

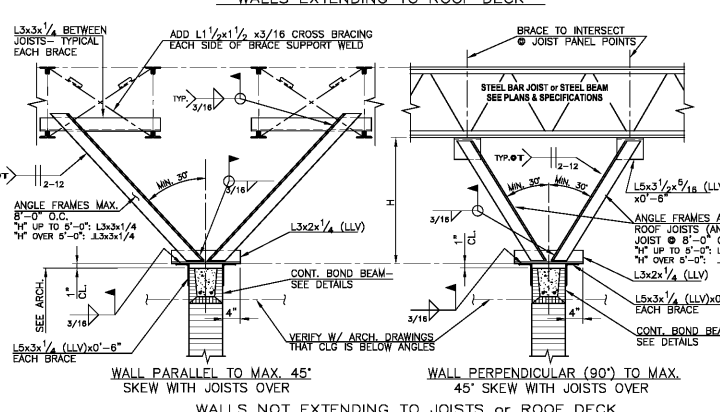
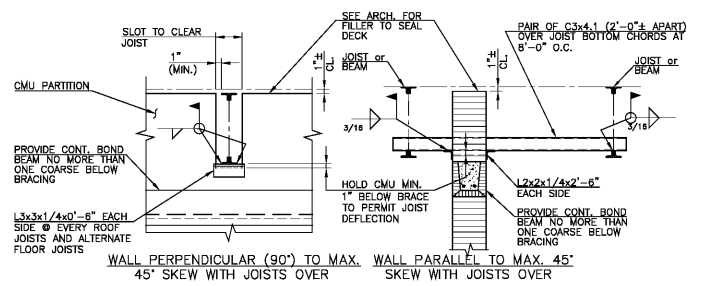
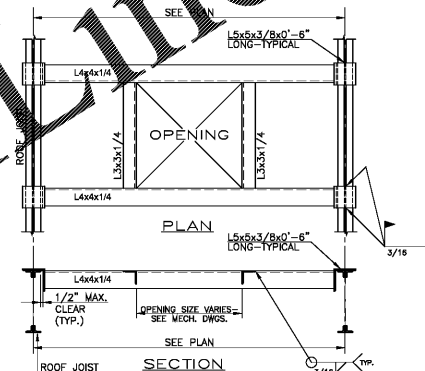
**TYPICAL DETAIL AT ROOF TOP CURBS UNDER MECHANICAL EQUIPMENT**

NOTES:  
 1. DETAIL DEPICTS CURB SUPPORTED BY MULTIPLE JOISTS. CONDITION SHALL BE THE SAME FOR CURB SUPPORTED BY ONLY 2 JOISTS.  
 2. BAR JOIST SECTIONS ARE SHOWN. DETAIL SHALL BE THE SAME FOR WF SECT.  
 3. COORDINATE EXACT LOCATIONS WITH MECHANICAL DRAWINGS.

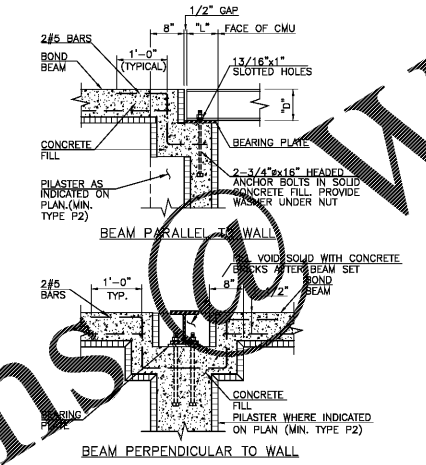
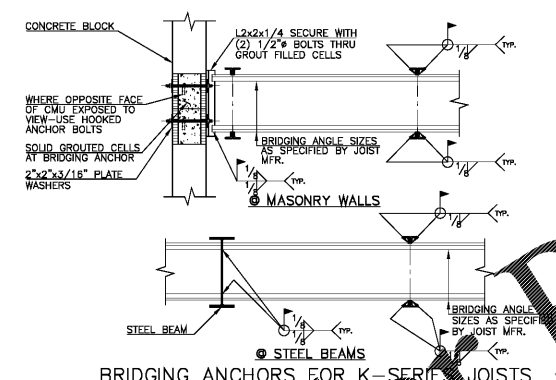


**DETAIL OF SUPPORTS FOR ROOF TOP CURBS UNDER MECHANICAL EQUIPMENT**

NOTES:  
 1. DETAIL DEPICTS CURB SUPPORTED BY MULTIPLE JOISTS. CONDITION SHALL BE THE SAME FOR CURB SUPPORTED BY ONLY 2 JOISTS.  
 2. BAR JOIST SECTIONS ARE SHOWN. DETAIL SHALL BE THE SAME FOR WF SECT.  
 3. COORDINATE EXACT LOCATIONS WITH MECHANICAL DRAWINGS.



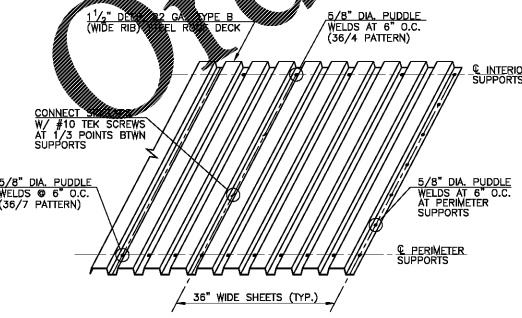
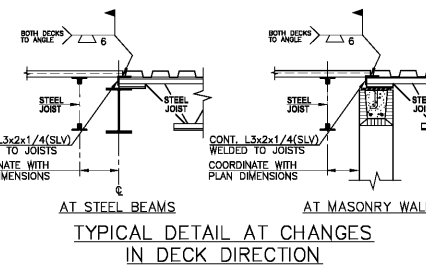
TO BE ADDED FOR:  
 1. EXTERIOR WALLS WHERE SETBACK BELOW ROOF.  
 2. INTERIOR PARTITIONS. OMIT BRACE IF WALL HAS CORNERS OR INTERSECTING PARTITIONS LESS THAN THE FOLLOWING SPACING.  
 8" CMU: 18'-0"  
 8" CMU: 24'-0"  
 12" CMU: 30'-0"



"D"	"L"	PLATE
TO 8"	8"	7 1/2"x1/2"x7 1/2"
9"-12"	16"	7 1/2"x5/8"x1'-0"
14"-18"	16"	7 1/2"x3/4"x1'-2"

\*"L" INDICATES LENGTH OF BEARING PARALLEL TO WALL. BEAMS PERPENDICULAR TO WALL SHALL BEAR FULL WIDTH LESS 2" IF MASONRY EXPOSED ON OPPOSITE FACE OR FULL WIDTH IF BRICK VENEER ON OPPOSITE FACE.

NOTES:  
 1. NUTS SHALL BE HAND TIGHT ONLY.  
 2. PROVIDE LAYER OF 30 LB. BLDG. FELT BETWEEN BEAM AND BEARING PLATE.



**SAUSSY ENGINEERING**  
 400 Johnny Mercer Boulevard • Suite E  
 Savannah, GA 30401  
 Phone: (912) 898-8255 • Fax: (912) 898-1882  
 PROJECT # 18038: 84-2.dwg 07/2019 3:20 pm

In Association With  
**INTERNATIONAL ASSOCIATION OF BUILDING OFFICIALS**  
 301 W. Broughton St. #301  
 Savannah, GA 30401  
 Ph.: 912-232-5561