



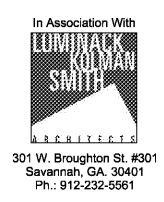
JOB NAME: BEACH HIGH SCHOOL AUDITORIUM  
 3001 Hopkins Street  
 Savannah, Georgia 31405  
 Chairman, County Board of Supervisors

SHEET NAME: TYPICAL DETAILS

J. W. ROBINSON & ASSOCIATES, INC.  
 ARCHITECTS • INTERIOR DESIGNERS • URBAN PLANNERS •  
 1020 RALPH DAVID ABERNATHY BLVD., S.W., ATLANTA, GEORGIA 30310  
 PHONE: (404) 753-4129 FAX: (404) 753-4435



JOB NO.	201801
DATE	NOV 17, 2018
DESIGNER	WHS III
CHECKED	WHS III
DATE	SEPT 4, 2018
DESIGN	100% SCHEMATIC DESIGN
DATE	OCT 26, 2018
DESIGN	100% DESIGN DEVELOPMENT
DATE	APRIL 5, 2018
CONST.	80% CONST. DOCUMENTS
DATE	MAY 17, 2018
CONST.	100% CONST. DOCUMENTS



301 W. Broughton St. #301  
 Savannah, GA 30401  
 Ph.: 912-232-5561

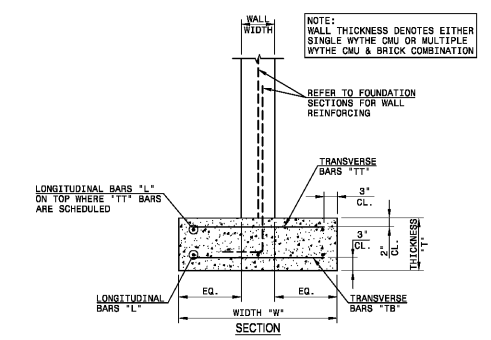
**SAUSSY ENGINEERING**  
 400 Jimmy Mercer Boulevard • Suite E  
 P.O. Box 30597 • Savannah, Georgia 31410  
 Phone: (912) 898-8255 • Fax: (912) 898-1882

RELEASED FOR CONSTRUCTION  
 FACILITY CODE: 625-0312

SHEET NUMBER  
**S4.1**

**CMU LINTEL SCHEDULE**

OPENING WIDTH	HEIGHT	REINFORCING BARS	BEARING EA. END
MAX. 3'-4"	8"	2#4	8"
MAX. 6'-0"	16"	2#6	16"
MAX. 8'-0"	16"	2#6	2#4
MAX. 10'-0"	16"	2#7	2#6
MAX. 13'-0"	24"	2#7	2#6

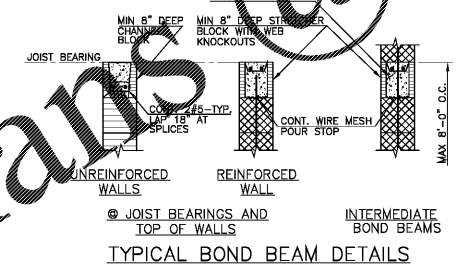
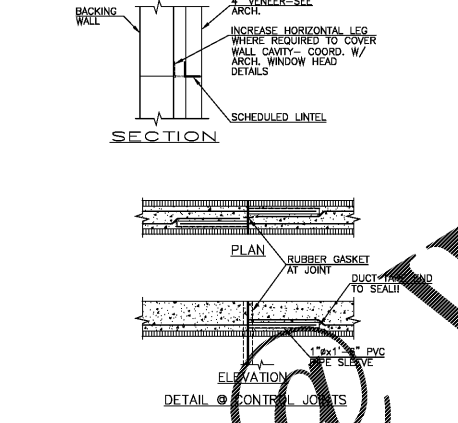
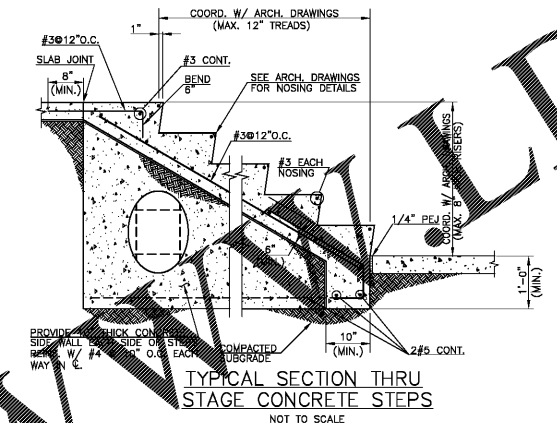


**WALL FOOTING SCHEDULE**

MARK	FOOTING SIZE	FOOTING REINFORCING	NOTES
	WIDTH "W" THICKNESS "T"	"L" BARS "T" BARS "T" BARS	
WF20	2'-0" 12"	3#4 #20#2" O.C.	
WF25	2'-6" 12"	3#5 #20#2" O.C.	
WF30	3'-0" 12"	3#5 #20#2" O.C.	
WF35	3'-6" 12"	4#5 #20#2" O.C.	
WF40	4'-0" 14"	5#5 #20#2" O.C.	
WF45	4'-6" 14"	5#5 #20#2" O.C.	
WF50	5'-0" 16"	6#5 #20#2" O.C.	

**BRICK LINTEL SCHEDULE**

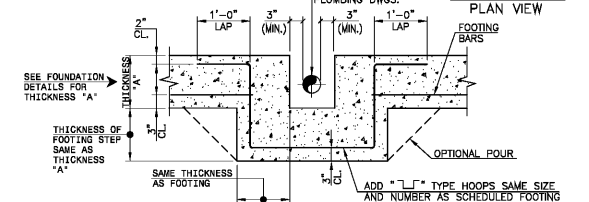
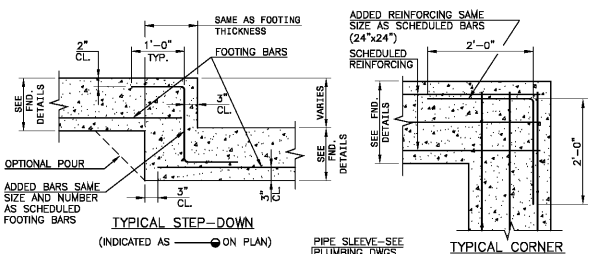
OPENING WIDTH	SIZE	BEARING EA. END
MAX. 4'-0"	L3 1/2x3 1/2x5/16	6"
MAX. 6'-0"	L4x3 1/2x5/16 (LLV)	8"
MAX. 8'-0"	L6x3 1/2x5/16 (LLV)	10"
MAX. 10'-0"	L6x3 1/2x5/16 (LLV)	12"
MAX. 13'-0"	L7x4x3/8 (LLV)	12"



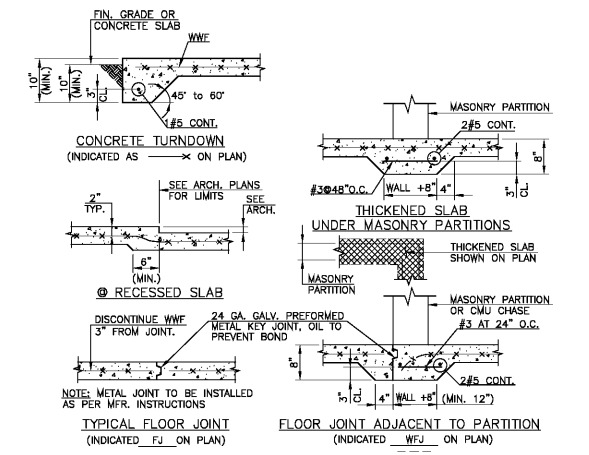
**TYPICAL COLUMN TO WALL TIES**

THIS DETAIL SHALL BE USED AT ALL LOCATIONS WHERE COLUMNS ARE WITHIN AND ABUT CMU WALLS. THIS DETAIL DOES NOT APPLY TO CMU ENCLOSURES/WRAPPS.

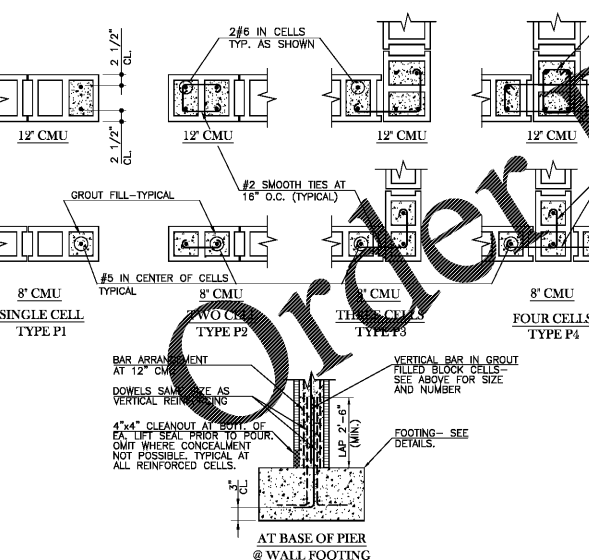
- BOND BEAM NOTES:**
1. ALL CMU WALLS (INTERIOR, EXTERIOR, BEARING OR NON-BEARING), 8" THICK (NOMINAL) OR GREATER, SHALL HAVE A BOND BEAM AT THE TOP OF THE WALL.
  2. WHERE WALLS ARE 10'-0" OR HIGHER, PROVIDE BOND BEAM AT MAXIMUM 8'-0" SPACING.
  3. BOND BEAMS SHALL BE PROVIDED AT ALL JOIST BEARING ELEVATIONS AND WHERE DETAILED AT OTHER SPECIAL LOCATIONS OR AS SHOWN ON ARCHITECTURAL DRAWINGS.
  4. LAP CONTINUOUS BOND BEAM REINFORCING 2'-0" AT SPLICES AND CONTROL JOINTS AS DETAILED HEREIN.
  5. PROVIDE 2#6x30"x30" HORIZONTAL BARS AT CHANGES IN BOND BEAM DIRECTION.
  6. WHERE BOND BEAM INTERRUPTED BY OPENINGS, BEND REINFORCING 12" INTO REINFORCED JAMBS.



**TYPICAL WALL FOOTING DETAILS**



**TYPICAL FLOOR SLAB DETAILS**



**TYPICAL DETAILS FOR REINFORCED CONCRETE MASONRY PIERS**

ORDER PLANS @ WWW.LDILine.com