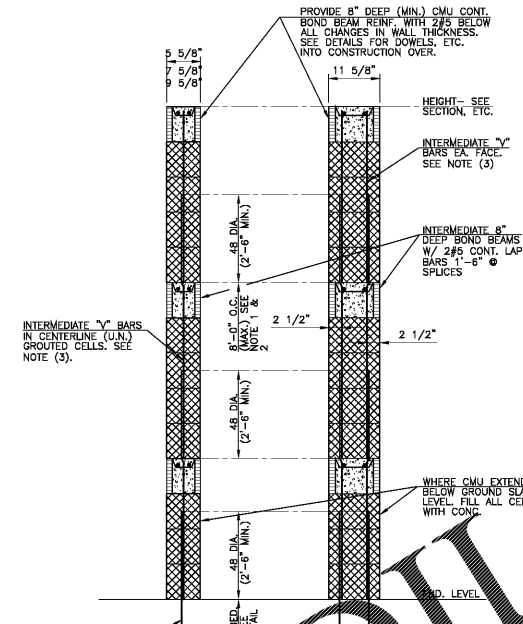
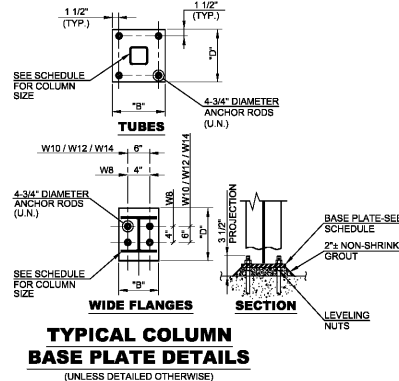


COLUMN AND FOUNDATION SCHEDULE

MARK	LOAD (KIPS)	COLUMN		PIER		FOOTING			NOTES:	
		SIZE	BASE PLATE	SIZE	VERT. REINF.	SPAC. # TIES	SIZE	DEPTH		REINF. E.W.
A4	12	W8x31	9'x3/4'x9'	18'x18'	Ø#5	8"	5'-0"x5'-0"	12'	Ø#5	
A5	19	W8x31	9'x3/4'x9'	18'x18'	Ø#5	8"	5'-0"x5'-0"	12'	Ø#5	
B4	34	W8x31	9'x3/4'x9'	18'x18'	Ø#5	8"	5'-0"x5'-0"	12'	Ø#5	
B5	38	W8x31	9'x3/4'x9'	18'x18'	Ø#5	8"	5'-0"x5'-0"	12'	Ø#5	
C1	62	HSS6x6x3/8	12'x3/4'x12'	-	-	-	6'-6"x6'-6"	14'	7#6	
C3	38	HSS6x6x3/8	12'x3/4'x12'	18'x18'	Ø#5	8"	5'-0"x5'-0"	12'	Ø#5	
D4	34	W8x31	9'x3/4'x9'	18'x18'	Ø#5	8"	5'-0"x5'-0"	12'	Ø#5	
D5	38	W8x31	9'x3/4'x9'	18'x18'	Ø#5	8"	5'-0"x5'-0"	12'	Ø#5	
E1	62	HSS6x6x3/8	12'x3/4'x12'	-	-	-	6'-6"x6'-6"	14'	7#6	
E3	38	HSS6x6x3/8	12'x3/4'x12'	18'x18'	Ø#5	8"	5'-0"x5'-0"	12'	Ø#5	
F4	34	W8x31	9'x3/4'x9'	18'x18'	Ø#5	8"	5'-0"x5'-0"	12'	Ø#5	
F5	38	W8x31	9'x3/4'x9'	18'x18'	Ø#5	8"	5'-0"x5'-0"	12'	Ø#5	
G4	12	W8x31	9'x3/4'x9'	18'x18'	Ø#5	8"	5'-0"x5'-0"	12'	Ø#5	
G5	19	W8x31	9'x3/4'x9'	18'x18'	Ø#5	8"	5'-0"x5'-0"	12'	Ø#5	
H2	9	HSS4x4x1/4	10'x5/8'x10'	-	-	-	4'-0"x4'-0"	12'	Ø#4	
H3	9	HSS4x4x1/4	10'x5/8'x10'	14'x14'	Ø#5	8"	BEAR ON WALL	FOOTING TYPE WF40	Ø#4	
J2	5	HSS4x4x1/4	10'x5/8'x10'	-	-	-	4'-0"x4'-0"	12'	Ø#4	

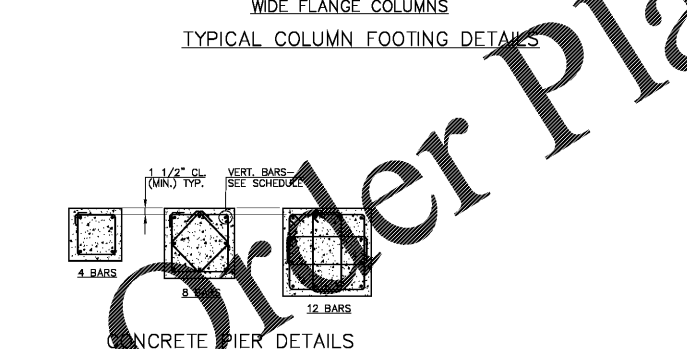
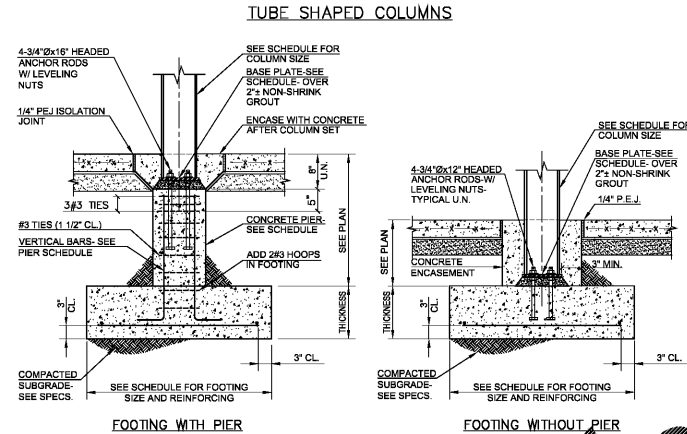
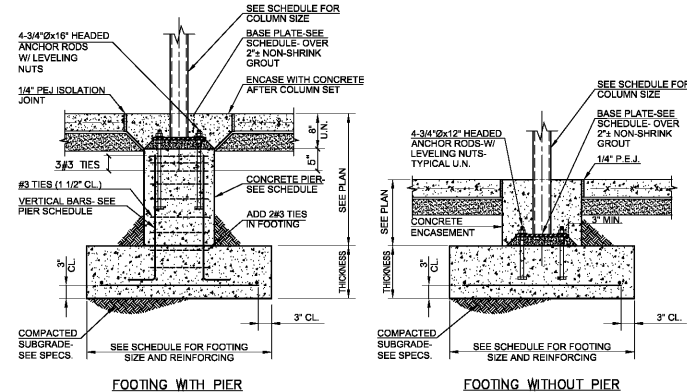
NOTES:
1. "N/A" = NOT APPLICABLE



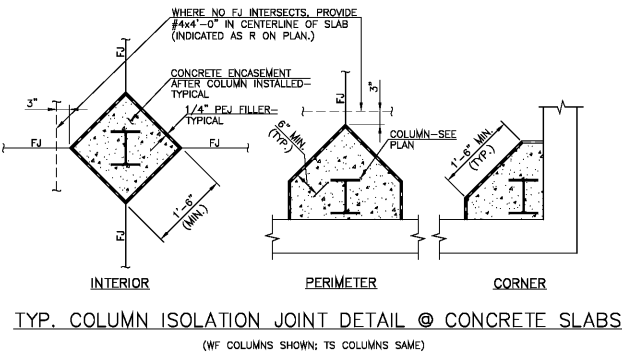
SHOP DRAWINGS SHALL BE FURNISHED BY GENERAL CONTRACTOR INCLUDING WALL ELEVATIONS AND PLANS DETAILING FINAL LAYOUT OF ALL VERTICAL AND HORIZONTAL REINFORCING REQUIRED BY THIS SCHEDULE DETAILS AND GENERAL NOTES IN THESE DOCUMENTS.

CLASS	EXPOSURE SEE NOTE (2)	LOAD BEARING WALLS (SEE NOTE 6)				NON-LOAD BEARING WALLS & PARTITIONS (SEE NOTE 6)				
		EXTERIOR		INTERIOR		EXTERIOR		INTERIOR		
		NOM. WIDTH	8"-10"	12"	8"-10"	12"	8"-10"	12"	8"-10"	12"
12'-0"	1/8" Ø 48"	2/8" Ø 48"	1/8" Ø 48"	2/8" Ø 48"	1/8" Ø 48"	2/8" Ø 48"	1/8" Ø 48"	2/8" Ø 48"	1/8" Ø 48"	2/8" Ø 48"
16'-0"	1/8" Ø 32"	2/8" Ø 48"	1/8" Ø 48"	2/8" Ø 48"	1/8" Ø 32"	2/8" Ø 48"	1/8" Ø 32"	2/8" Ø 48"	1/8" Ø 32"	2/8" Ø 48"
20'-0"	1/8" Ø 16"	2/8" Ø 32"	1/8" Ø 32"	2/8" Ø 48"	1/8" Ø 16"	2/8" Ø 32"	1/8" Ø 16"	2/8" Ø 32"	1/8" Ø 16"	2/8" Ø 32"
24'-0"		2/8" Ø 24"	1/8" Ø 32"	2/8" Ø 32"		2/8" Ø 24"	1/8" Ø 32"	2/8" Ø 24"		2/8" Ø 32"
30'-0"		2/8" Ø 24"	1/8" Ø 32"	2/8" Ø 32"		2/8" Ø 24"	1/8" Ø 32"	2/8" Ø 24"		2/8" Ø 32"

NOTES:
(1) INTERMEDIATE BEAMS MAY BE USED IN ELEV. WITHIN 8' MAX. INCREMENTS TO INCORPORATE JOINTS OR BEARING LEVELS FOR JOISTS OR BEAMS. SEE STANDARD DETAILS. USE CHANGE BLOCK BETWEEN VERTICAL BARS OR PLUS CELLS BELOW WHERE NOT REQUIRED FOR LIFTING.
(2) PLUS CELLS MAY BE LIFT PER POUR IS 8'-0" ALL REINF. MUST BE TIED IN PLACE PRIOR TO GROUTING. SEE GENERAL NOTES.
(3) SEE SCHEDULE FOR REINFORCING CONG. MASONRY PIERS FOR ADDITIONAL BARS REQ'D AT JOINTS, CORNERS, ETC.
(4) HEIGHT IS THE MAX. DISTANCE BETWEEN LATERAL SUPPORTS PROVIDED BY FLOORS, ROOFS, BRACES, OR OTHER HORIZONTAL PLANS. WHERE WALL IS LATERALLY SUPPORTED INTERMEDIATE FLOOR OF ROOF LEVELS, THE REINFORCING SHALL BE THAT SCHEDULED FOR THE MAX. DISTANCE BETWEEN SUPPORTS. WHERE WALL CONTIGUOUS ABOVE ROOF LEVEL (E.G. CHIMNEY), CONT. SCHEDULE REINFORCING FULL HEIGHT, U.N.
(5) INTERIOR WALLS ARE THOSE IN WHICH NO PORTION BELOW HIGHEST ADJACENT ROOF IS EXPOSED TO WIND FORCES (EXTERIOR EXPOSURE). IF ANY PORTION OF A WALL SYSTEM IS EXPOSED TO THE EXTERIOR, IT SHALL BE CLASSIFIED "EXTERIOR" EXPOSURE FOR ITS FULL HEIGHT AND REINF. ACCORDINGLY.
(6) ALL REINFORCED MASONRY WALLS SUPPORTING ROOFS SHALL BE CLASSIFIED AS "LOAD BEARING". WHERE A REINF. MASONRY WALL IS NOT SUPPORTING A ROOF, IT SHALL BE LATERALLY BRACED AS SPECIFIED.



NOTES:
1. SEE SCHEDULE FOR PIER SIZE & REINFORCING.
2. TERMINATE REINFORCING BARS IN FOOTING WITH 90° HOOK (12) BAR DIAMETERS (MIN.).
3. ALTERNATE LOCATION OF 90° AND 135° BENDS.
4. ALL PIERS TO BE BOARD FORMED.
5. TOP OF PIERS SHALL BE 8" BELOW FINISHED FLOOR U.N.
6. TOP OF VERTICAL DOWELS SHALL EXTEND TO 1 1/2" FROM TOP OF PIER.



BEACH HIGH SCHOOL AUDITORIUM
3001 Hopkins Street
Savannah, Georgia 31405
Chairman, Facility Safety System

JOB NAME:
SHEET NAME:

J. W. ROBINSON & ASSOCIATES, INC.
ARCHITECTS • INTERIOR DESIGNERS • URBAN PLANNERS •
1020 RALPH DAVID ABERNATHY BLVD., S.W., ATLANTA, GEORGIA 30310
PHONE: (404) 753-4129 FAX: (404) 753-4435



DATE	BY	REVISIONS

SAUSSY ENGINEERING
460 Johnny Mercer Boulevard • Suite E
Savannah, GA 30401
Phone: (912) 898-8255 • Fax: (912) 898-1882
PROJECT # 18038: S3.1.dwg 9/15/2019 3:20 pm

In Association With
ARCHITECTS
301 W. Broughton St. #301
Savannah, GA 30401
Ph.: 912-232-5561

RELEASED FOR CONSTRUCTION
FACILITY CODE: 625-0312

JOB NO: 201801

SHEET NUMBER
S3.1