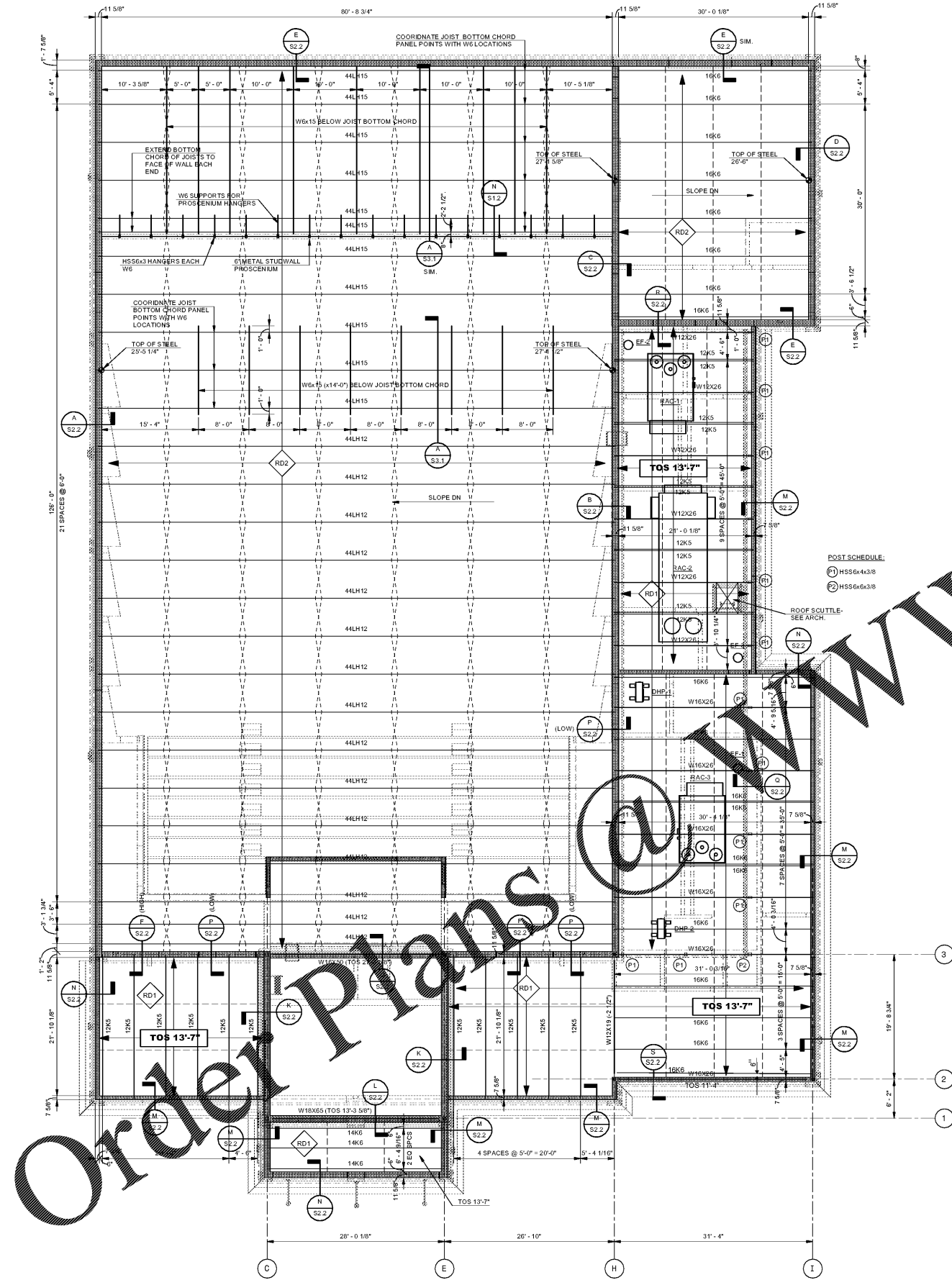
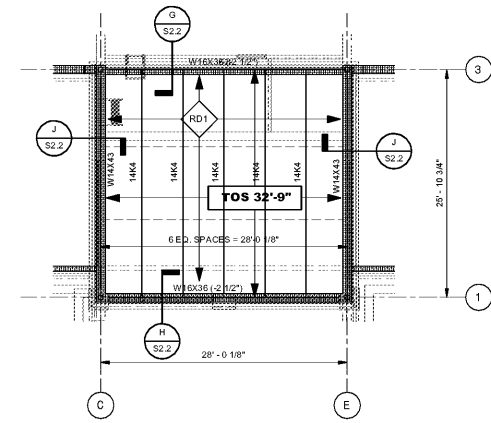


A
B
C
D
E
F
G
H
I
J
K
L
M
N

1 2 3 4 5 6 7 8 9 10 11 12 13 14 15 16 17 18 19



ROOF FRAMING PLAN
SCALE: 1/8" = 1'-0"



HIGH ROOF FRAMING PLAN
SCALE: 1/8" = 1'-0"

www.LDILine.com



JOB NAME: BEACH HIGH SCHOOL AUDITORIUM
3001 Higgins Street
Savannah, Georgia 31405
Chatham County Public School System

SHEET NAME: ROOF FRAMING PLAN

DATE: APRIL 5, 2019
100% CONST. DOCUMENTS
MAY 17, 2019 100% CONST. DOCUMENTS

J. W. ROBINSON & ASSOCIATES, INC.
ARCHITECTS • INTERIOR DESIGNERS • URBAN PLANNERS •
1020 RALPH DAVID ABERNATHY BLVD., S.W., ATLANTA, GEORGIA 30310
PHONE: (404) 753-4129 FAX: (404) 753-4435



DATE: SEPT. 4, 2018	100% SCHEMATIC DESIGN
DATE: OCT. 29, 2018	100% DESIGN DEVELOPMENT
DATE: APRIL 5, 2019	80% CONST. DOCUMENTS
DATE: MAY 17, 2019	100% CONST. DOCUMENTS

SAUSSY ENGINEERING
400 Johnny Mercer Boulevard • Suite E
P.O. Box 30597 • Savannah, Georgia 31410
Phone: (912) 896-8255 • Fax: (912) 896-1882
PROJECT NO. 18038

In Association With
LUMIRACK KOLMAN SMITH
ARCHITECTS
301 W. Broughton St., #301
Savannah, GA 30401
Ph: 912-232-5561

RELEASED FOR CONSTRUCTION
FACILITY CODE: 625-0312

201801

SHEET NUMBER
S2.1