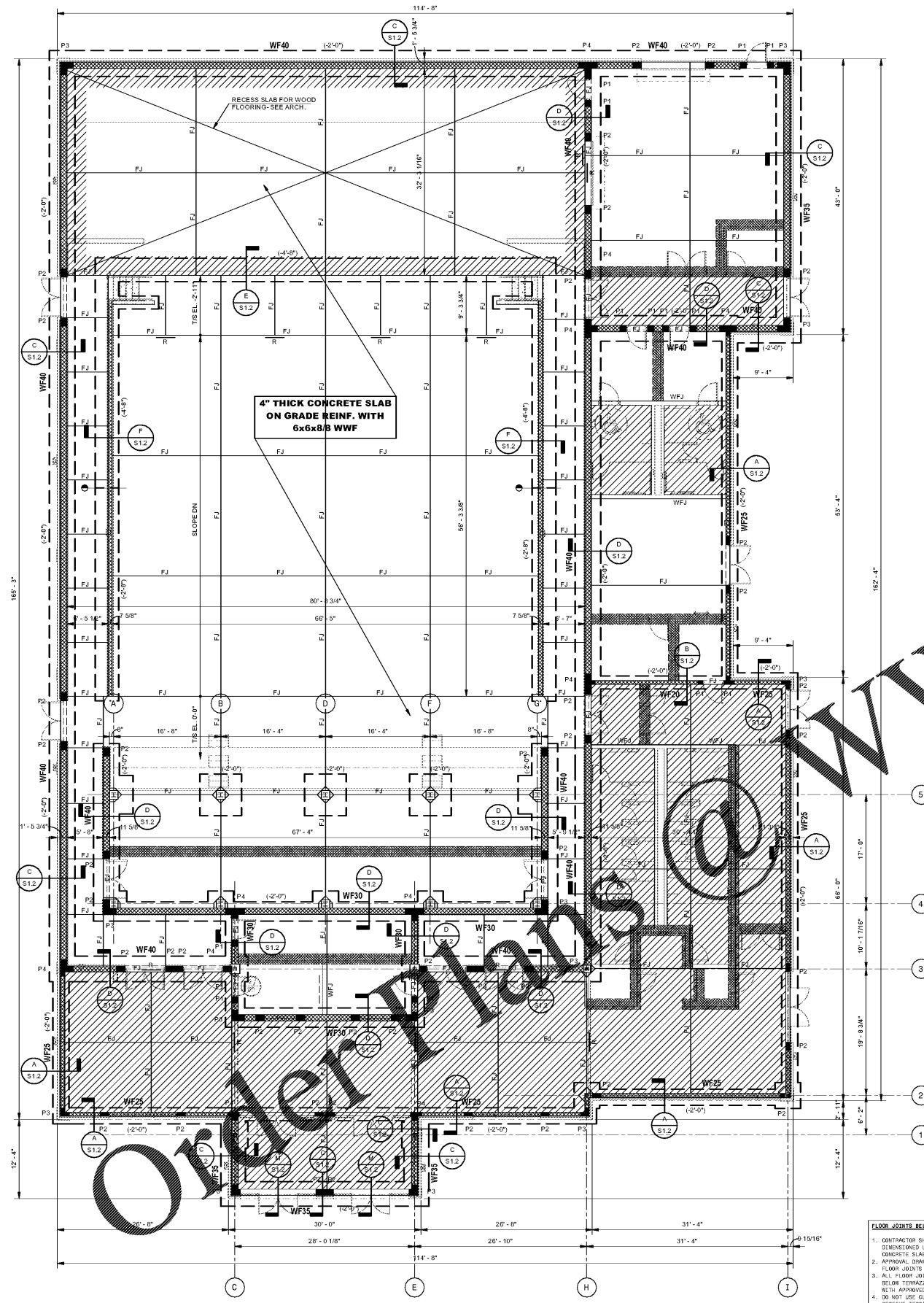
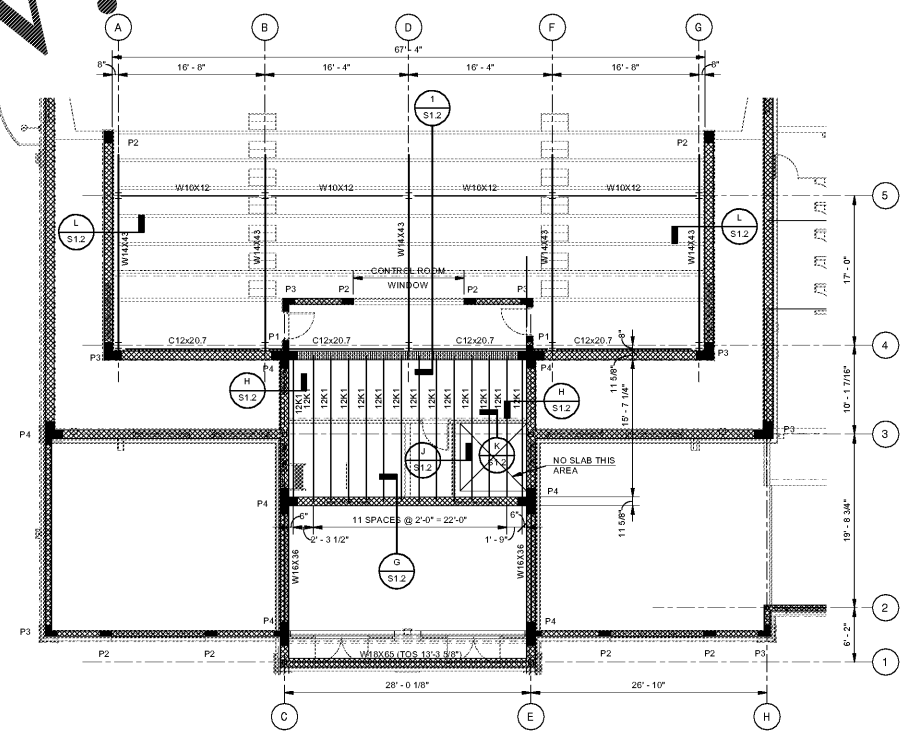


A
B
C
D
E
F
G
H
I
J
K
L
M
N



FOUNDATION PLAN
SCALE: 1/8" = 1'-0"

- FLOOR JOINTS BELOW TERRAZZO**
1. CONTRACTOR SHALL SUBMIT FOR ARCHITECT'S APPROVAL A PROPOSED DIMENSIONED LAYOUT OF THE TERRAZZO JOINTS PRIOR TO POURING CONCRETE SLABS IN THESE AREAS.
 2. APPROVAL DIMENSIONS SHALL INDICATE LOCATIONS OF CONCRETE SLAB FLOOR JOINTS SHOWN ON STRUCTURAL DIMENSIONS FOR COORDINATION.
 3. ALL FLOOR JOINTS SHOWN ON STRUCTURAL DIMENSIONS WHICH OCCUR BELOW TERRAZZO FLOOR FINISHES, SHALL BE LOCATED TO ALIGN WITH APPROVED TERRAZZO JOINT LOCATIONS ONLY.
 4. DO NOT USE CURING COMPOUNDS ON SLAB AREAS SCHEDULED TO RECEIVE TERRAZZO FINISHES.



SECOND FLOOR FRAMING PLAN
SCALE: 1/8" = 1'-0"

www.LDILine.com



JOB NAME: BEACH HIGH SCHOOL AUDITORIUM
3001 Hobbs Street
Savannah, Georgia 31405
Chatham County Building Department
SHEET NAME: FOUNDATION AND SECOND FLOOR FRAMING PLANS

J. W. ROBINSON & ASSOCIATES, INC.
ARCHITECTS • INTERIOR DESIGNERS • URBAN PLANNERS •
1020 RALPH DAVID ABERNATHY BLVD., S.W., ATLANTA, GEORGIA 30310
PHONE: (404) 753-4129 FAX: (404) 753-4435



DATE	BY	DESCRIPTION
APRIL 5, 2018	WHS III	100% SCHEMATIC DESIGN
OCT 29, 2018	GJH	100% DESIGN DEVELOPMENT
APRIL 5, 2019	WHS III	80% CONST. DOCUMENTS
MAY 17, 2019	WHS III	100% CONST. DOCUMENTS

SAUSSY ENGINEERING
400 Johnny Mercer Boulevard • Suite E
P.O. Box 30597 • Savannah, Georgia 31410
Phone: (912) 896-8255 • Fax: (912) 896-1882
PROJECT NO. 18038

In Association With
LUMIACK KOTMAN SMITH
ARCHITECTS
301 W. Broughton St. #301
Savannah, GA. 30401
Ph: 912-232-5561

RELEASED FOR CONSTRUCTION
FACILITY CODE: 625-0312

201801

SHEET NUMBER
S1.1