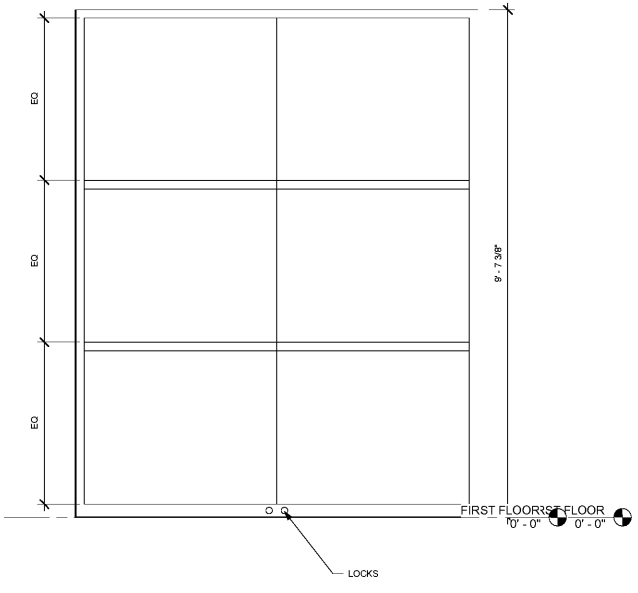
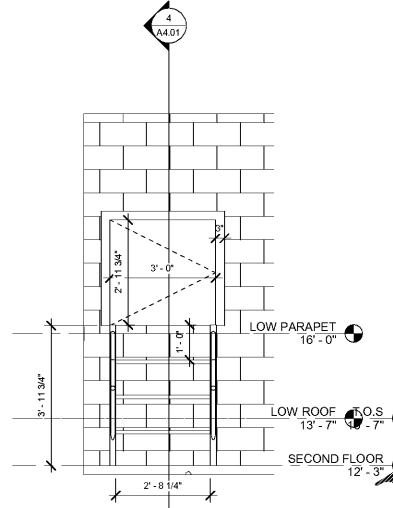


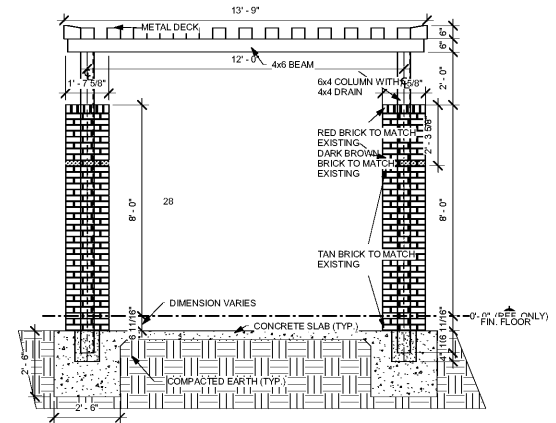
PLAN AT BRICK COLUMN



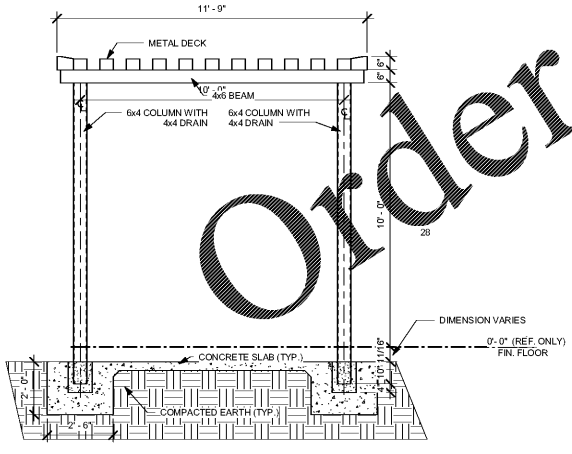
TROPHY CASE



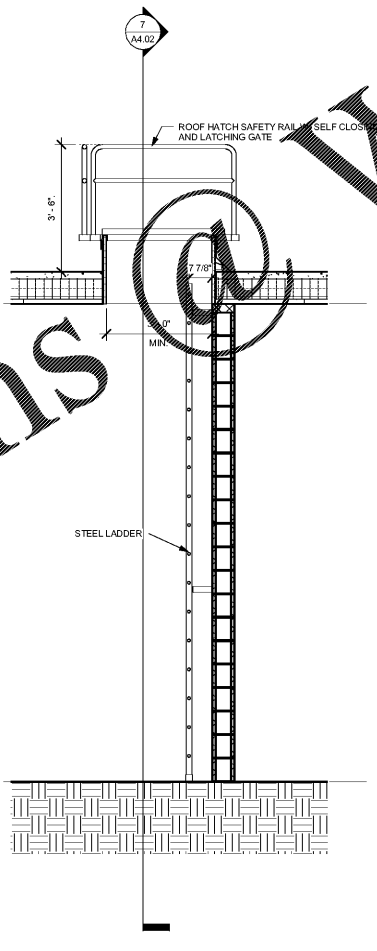
Elevation 5 - d



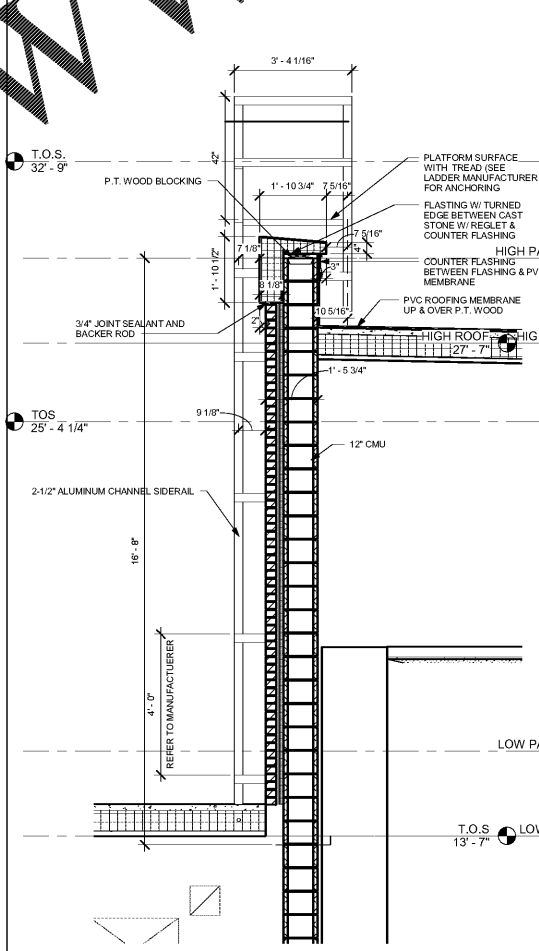
CANOPY'S SECTION 1



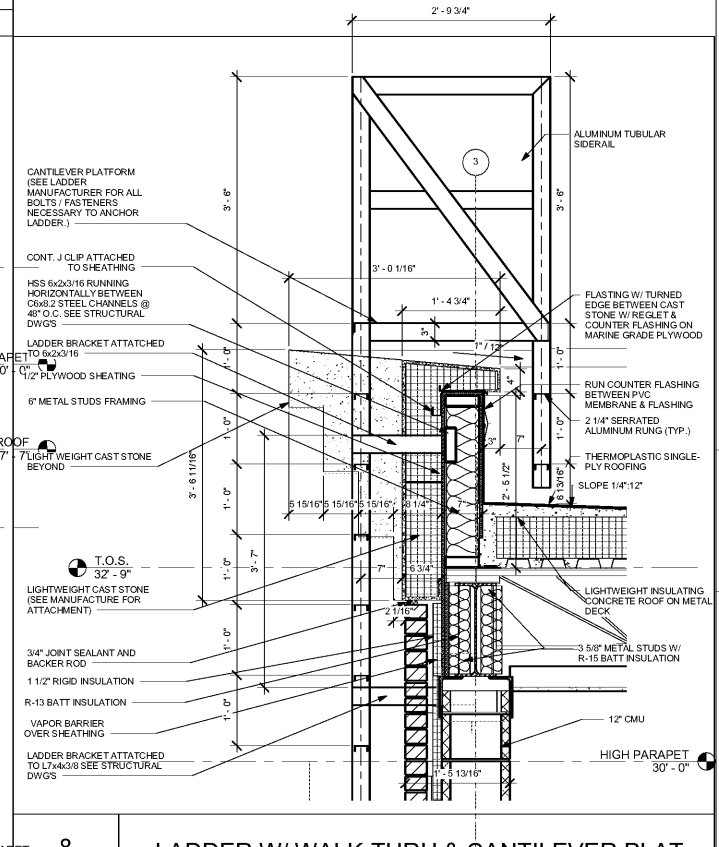
CANOPY'S SECTION 2



ROOF HATCH DETAIL



AUDITORIUM ROOF ACCESS



LADDER W/ WALK-THRU & CANTILEVER PLAT.

Canopy's Elevations & Brick Column Detail

3/8" = 1'-0"

ROOF HATCH DETAIL

1/2" = 1'-0"

AUDITORIUM ROOF ACCESS

1/2" = 1'-0"

RELEASED FOR CONSTRUCTION
FACILITY CODE: 625-0312



JOB NAME: BEACH HIGH SCHOOL AUDITORIUM
3001 Higgins Street
Savannah, Georgia 31405
Chatham County Public School System

SHEET NAME: MISCELLANEOUS DETAILS

DATE: 10/17/2019

J. W. ROBINSON & ASSOCIATES, INC.
ARCHITECTS • INTERIOR DESIGNERS • URBAN PLANNERS •
1020 RALPH DAVID ABERNATHY BLVD., S.W., ATLANTA, GEORGIA 30310
PHONE: (404) 753-4129 FAX: (404) 753-4435



DATE: 10/17/2019	100% SCHEMATIC DESIGN
DATE: 09/29/2019	100% DESIGN DEVELOPMENT
DATE: 04/15/2019	80% CONST. DOCUMENTS
DATE: 05/17/2019	100% CONST. DOCUMENTS

201801
A9.04

Order Plans @ www.LDILine.com