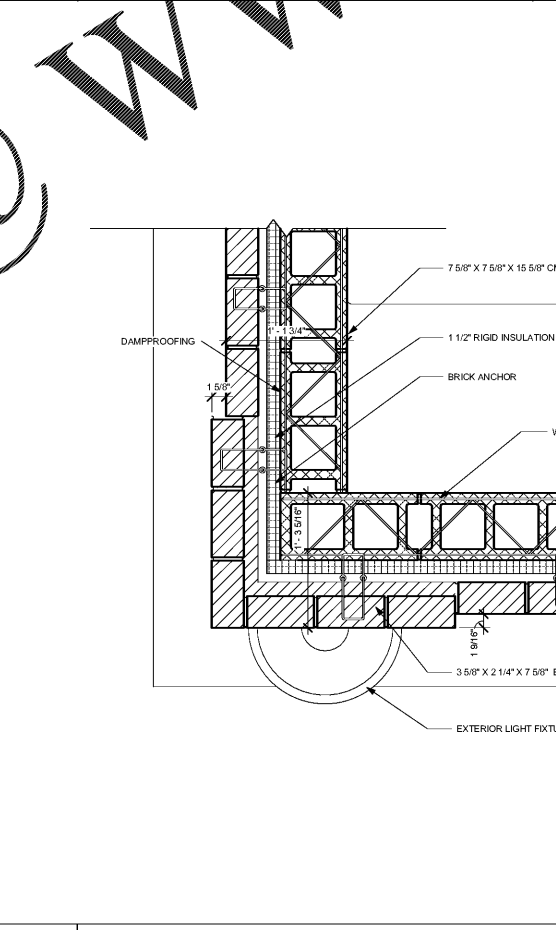
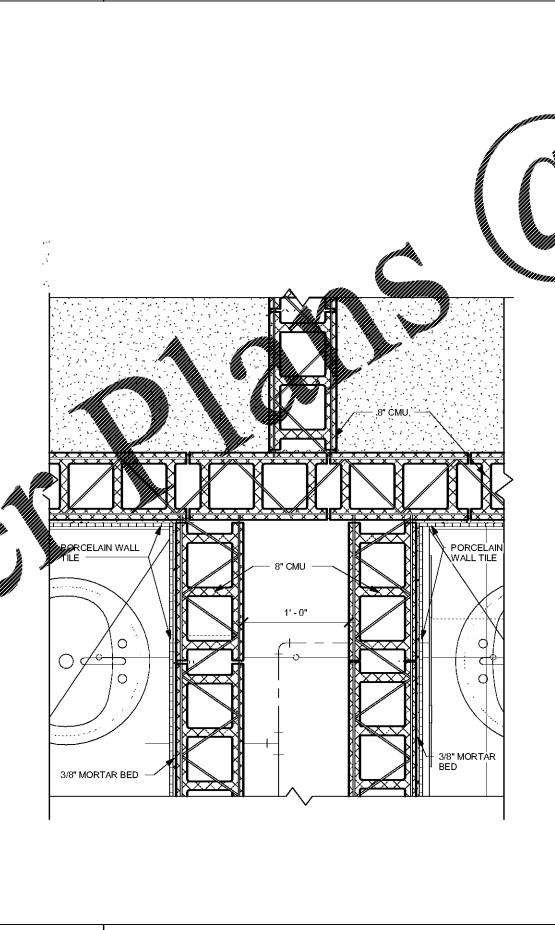
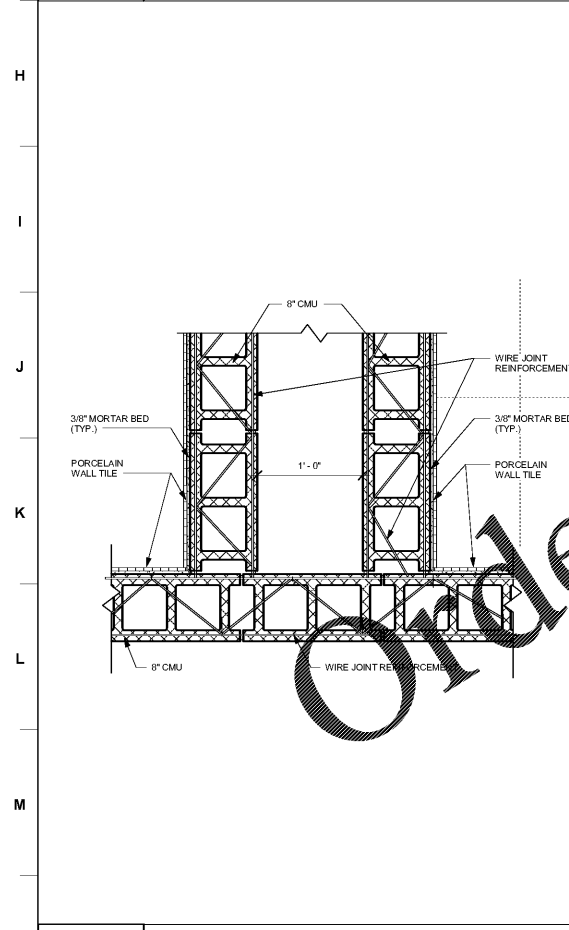


1 PLAN DETAIL 1
1 1/2" = 1'-0"

2 PLAN DETAIL 2
1 1/2" = 1'-0"

3 PLAN DETAIL 3
1 1/2" = 1'-0"

4 PLAN DETAIL 4
1 1/2" = 1'-0"



5 PLAN DETAIL 5
1 1/2" = 1'-0"

7 PLAN DETAIL 7
1 1/2" = 1'-0"

6 Detail 10
1 1/2" = 1'-0"



JOB NAME: BEACH HIGH SCHOOL AUDITORIUM
3001 Higgins Street
Savannah, Georgia 31405
Chatham County Public School System

SHEET NAME: PLAN DETAILS

J. W. ROBINSON & ASSOCIATES, INC.
ARCHITECTS • INTERIOR DESIGNERS • URBAN PLANNERS •
1020 RALPH DAVID ABERNATHY BLVD., S.W., ATLANTA, GEORGIA 30310
PHONE: (404) 753-4129 FAX: (404) 753-4435



DATE	BY	REVISIONS

201801
SHEET NUMBER
A6.01

RELEASED FOR CONSTRUCTION
FACILITY CODE: 625-0312



Order Plans @ WWW.LDILLING.COM