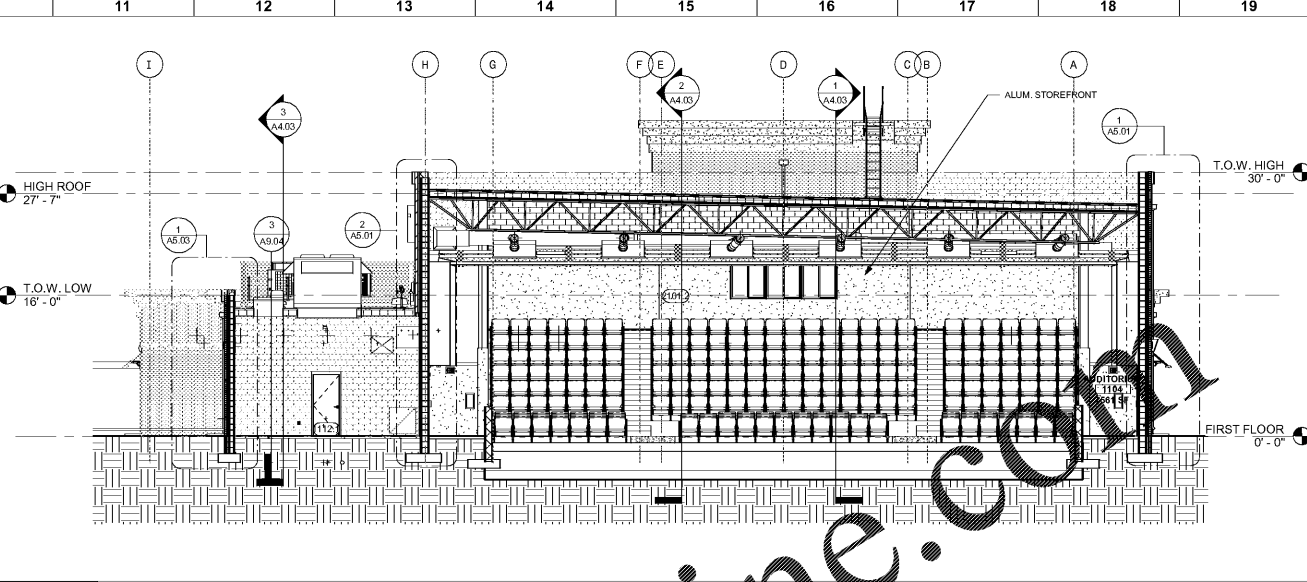


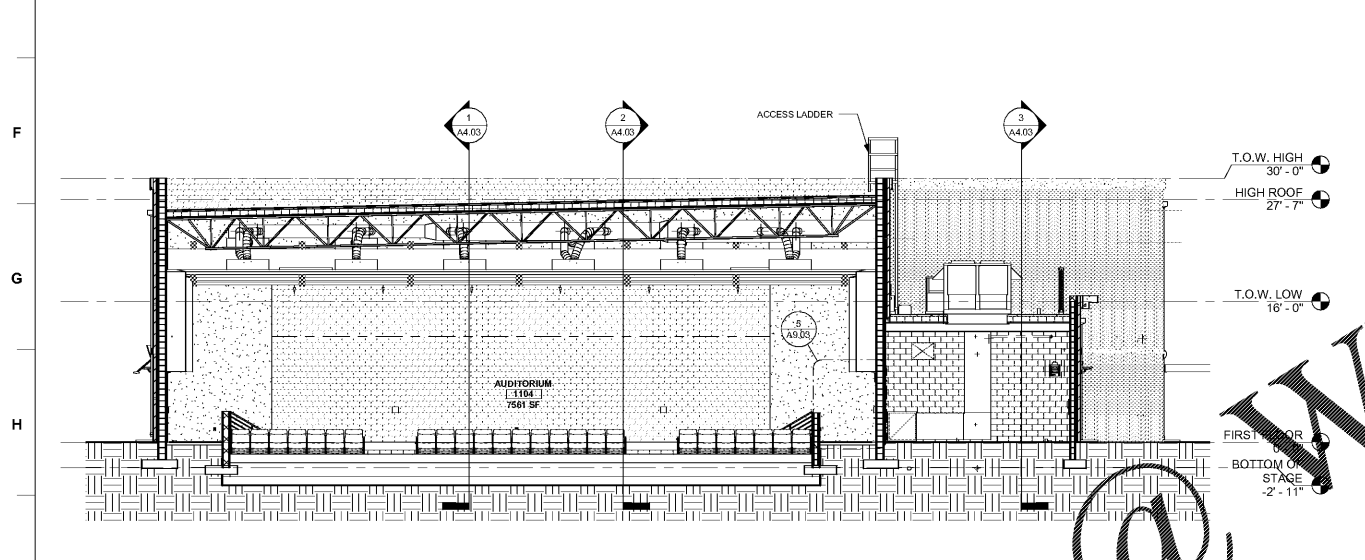
6 BUILDING SECTION

1/8" = 1'-0"



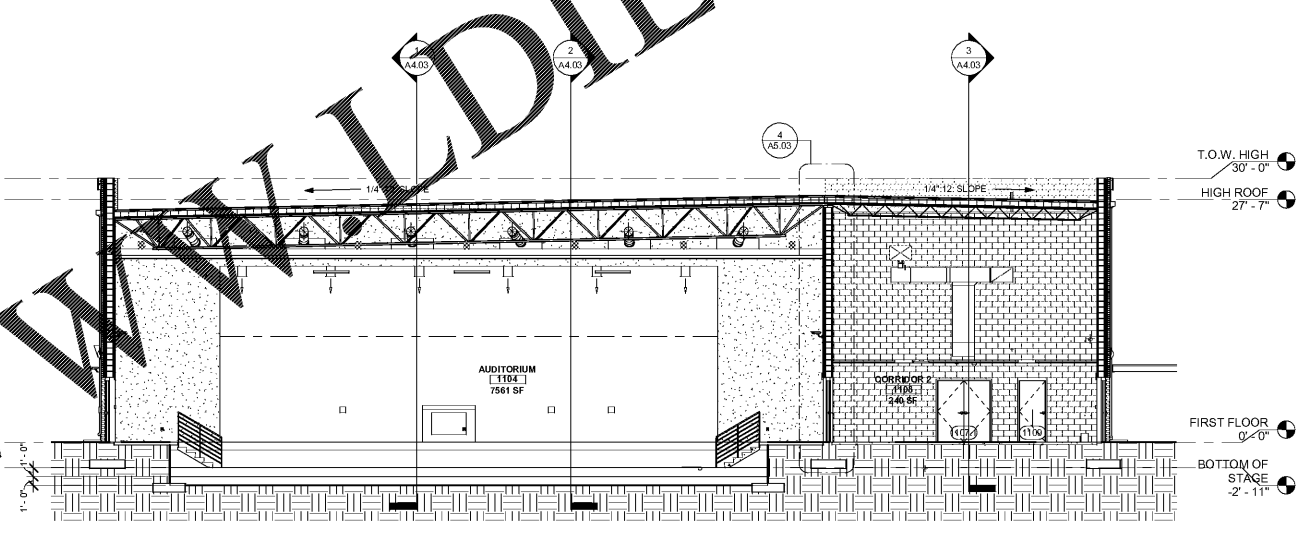
7 BUILDING SECTION

1/8" = 1'-0"



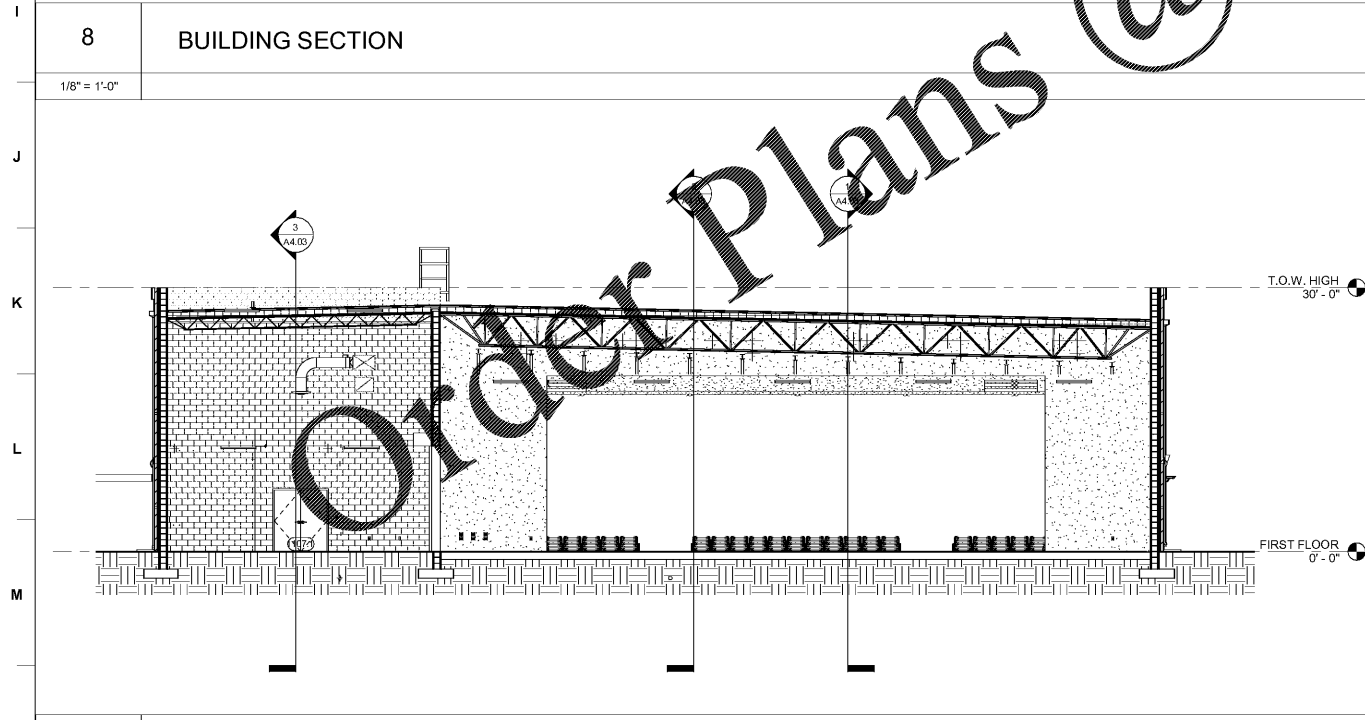
8 BUILDING SECTION

1/8" = 1'-0"



9 BUILDING SECTION

1/8" = 1'-0"



10 BUILDING SECTION

1/8" = 1'-0"



JOB NAME: BEACH HIGH SCHOOL AUDITORIUM
 SHEET NAME: BUILDING SECTIONS
 301 W. Broughton St. #301
 Savannah, Georgia 31405
 Chatham County Public School System

J. W. ROBINSON & ASSOCIATES, INC.
 ARCHITECTS • INTERIOR DESIGNERS • URBAN PLANNERS •
 1020 RALPH DAVID ABERNATHY BLVD., S.W., ATLANTA, GEORGIA 30310
 PHONE: (404) 753-4129 FAX: (404) 753-4435



DATE	BY	REVISIONS

In Association With

 ARCHITECTS
 301 W. Broughton St. #301
 Savannah, GA. 30401
 Ph: 912-232-5561

JOB NO. 201801
 SHEET NUMBER

RELEASED FOR CONSTRUCTION
 FACILITY CODE: 625-0312

A4.02