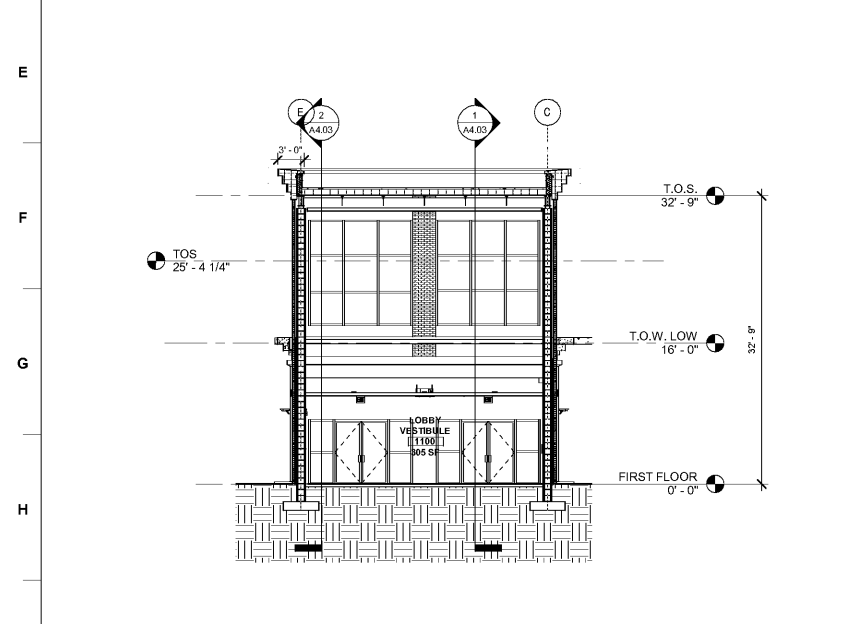


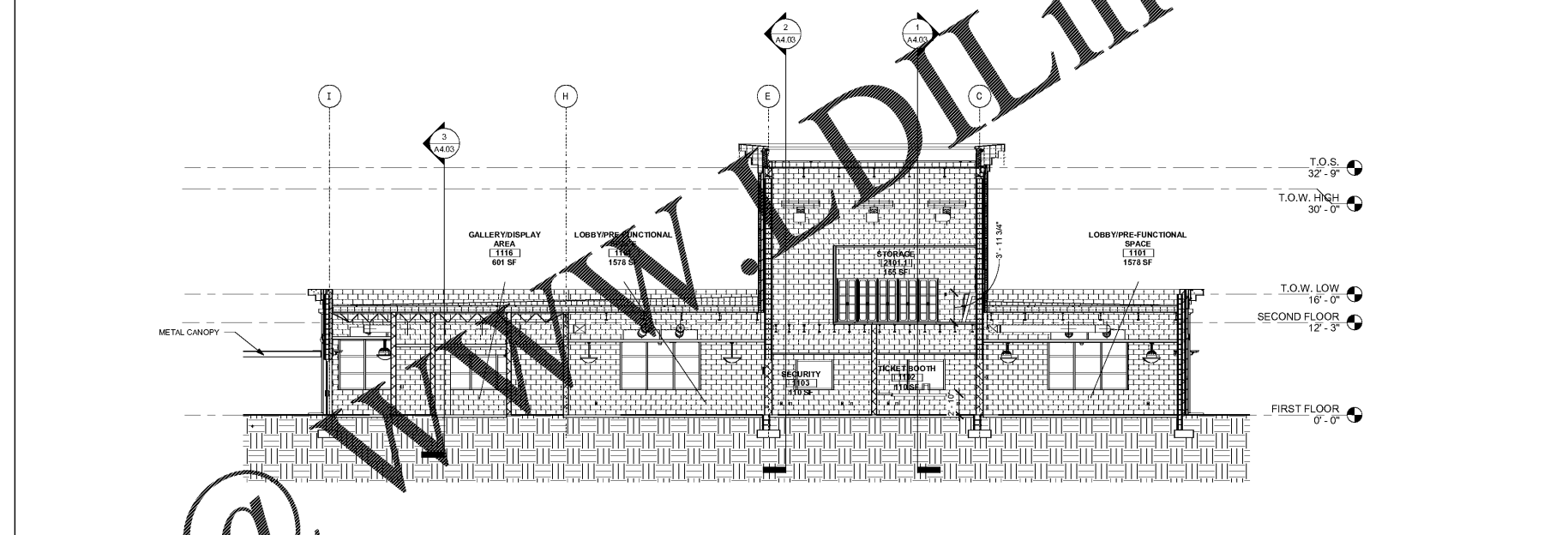
3 BUILDING SECTION

1/8" = 1'-0"



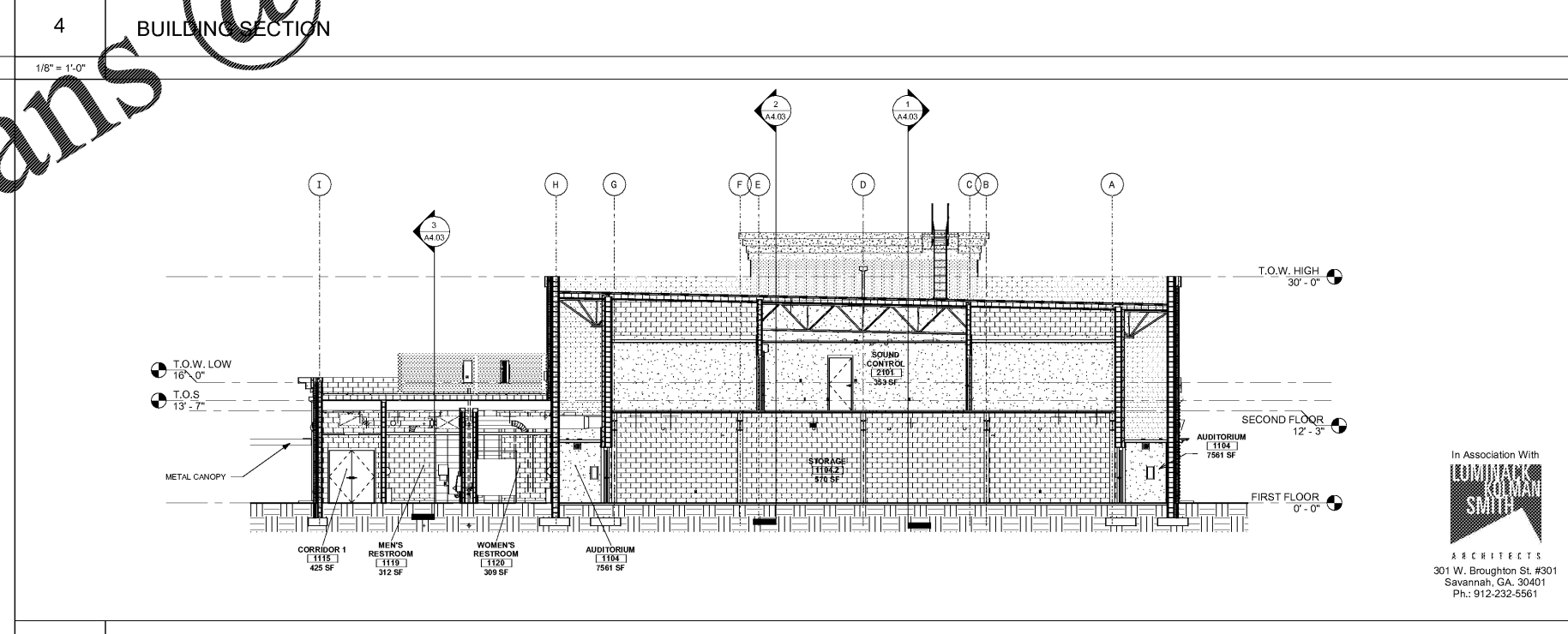
2 BUILDING SECTION

1/8" = 1'-0"



4 BUILDING SECTION

1/8" = 1'-0"



5 BUILDING SECTION

1/8" = 1'-0"

JOB NAME: BEACH HIGH SCHOOL AUDITORIUM  
 301 W. Broughton St.  
 Savannah, Georgia 31405  
 Chatham County Public School System

SHEET NAME: BUILDING SECTIONS

THIS DRAWING AND ITS REPRESENTATIONS ARE THE PROPERTY OF THE ARCHITECT AND MAY BE REPRODUCED OR TRANSMITTED IN ANY FORM OR BY ANY MEANS, ELECTRONIC OR MECHANICAL, WITHOUT PERMISSION IN WRITING BY THE ARCHITECT.

**J. W. ROBINSON & ASSOCIATES, INC.**  
 • ARCHITECTS • INTERIOR DESIGNERS • URBAN PLANNERS •  
 1020 RALPH DAVID ABERNATHY BLVD., S.W., ATLANTA, GEORGIA 30310  
 PHONE: (404) 753-4129 FAX: (404) 753-4435



201801	CHECKED	CHECKED	REVISE
DATE	AUTHOR	DATE	REVISION
OCT. 29, 2018	100% SCHEMATIC DESIGN		
APRIL 5, 2019	50% CONST. DOCUMENTS		
MAY 17, 2019	100% CONST. DOCUMENTS		

In Association With

ARCHITECTS  
 301 W. Broughton St. #301  
 Savannah, GA. 30401  
 Ph: 912-232-5561

RELEASED FOR CONSTRUCTION  
 FACILITY CODE: 625-0312

SHEET NUMBER  
**A4.01**

Order Plans @ [www.dilines.com](http://www.dilines.com)