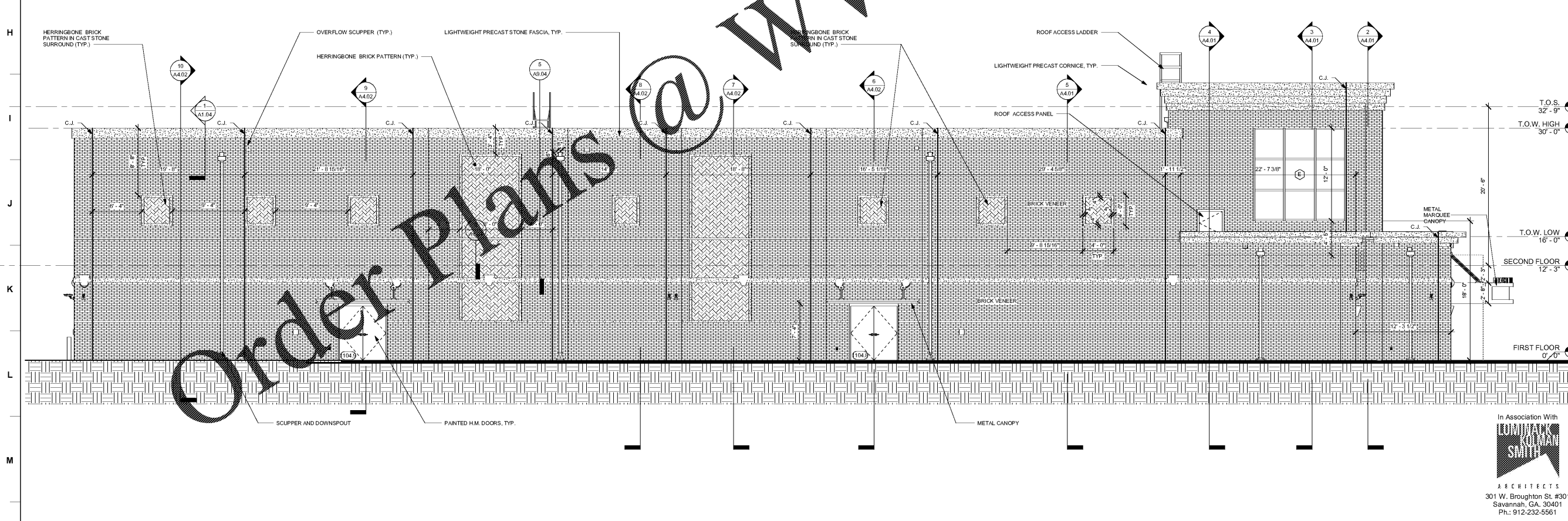


1 NORTH ELEVATION

3/16" = 1'-0"



2 SOUTH ELEVATION

3/16" = 1'-0"



JOB NAME: BEACH HIGH SCHOOL AUDITORIUM
 3001 Higgins Street
 Savannah, Georgia 31405
 Chatham County Public School System

SHEET NAME: ELEVATIONS

DATE: 05/17/2019

J. W. ROBINSON & ASSOCIATES, INC.
 ARCHITECTS • INTERIOR DESIGNERS • URBAN PLANNERS •
 1020 RALPH DAVID ABERNATHY BLVD., S.W., ATLANTA, GEORGIA 30310
 PHONE: (404) 753-4129 FAX: (404) 753-4435



DATE	BY	DESCRIPTION
MAY 17, 2019	100% CONST. DOCUMENTS	
APRIL 5, 2019	80% CONST. DOCUMENTS	
OCT. 29, 2018	100% SCHEMATIC DESIGN	
DATE	BY	DESCRIPTION
		REVISIONS

201801

In Association With

 ARCHITECTS
 301 W. Broughton St. #301
 Savannah, GA. 30401
 Ph: 912-232-5561

RELEASED FOR CONSTRUCTION
 FACILITY CODE: 625-0312

SHEET NUMBER
A3.02