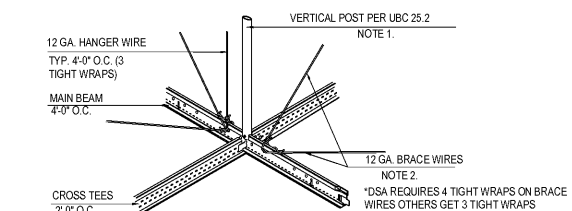


PERIMETER NOTES

3. THE UNATTACHED PERIMETER SHALL HAVE A MINIMUM OF 1/2" CLEARANCE AT ENDS OF COMPONENTS.

4. CONTINUOUS SPACER BAR TO BE LOCKED TO COMPONENTS ON UNATTACHED WALL.

5. COMPONENT TERMINAL ENDS MUST BE SUPPORTED BY A 12 GA. HANGER WIRE ON ALL WALLS.



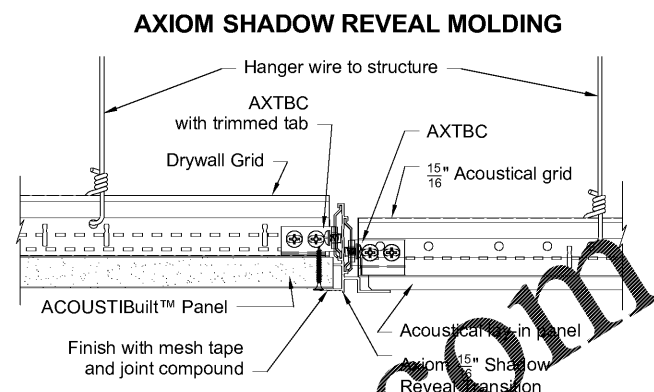
BRACING NOTES

1. VERTICAL POSTS MAY NOT BE REQUIRED IN SOME CITIES AND NOT ENFORCED IN ALL SEISMIC ZONES.

2. BRACING WIRES TO BE ATTACHED A MAXIMUM OF 45° TO THE PLANE OF THE CEILING AND PARALLEL TO THE COMPONENTS AT THE BRACING POINT.

3. BRACE WIRES TO BE TAUT AND TIED BOTH ENDS WITH THREE TIGHT WRAPS.

4. DSA REQUIRES 4 TIGHT WRAPS ON BRACE WIRES OTHERS GET 3 TIGHT WRAPS.



AXIOM SHADOW REVEAL MOLDING

9

RCP DETAIL 9

3" = 1'-0"

8

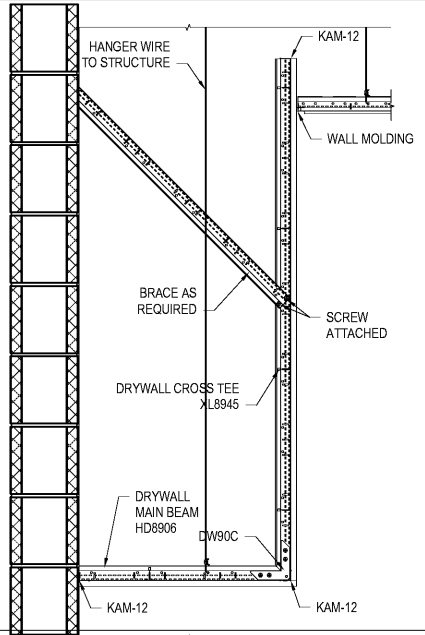
RCP DETAIL 8

3" = 1'-0"

7

RCP DETAIL 7

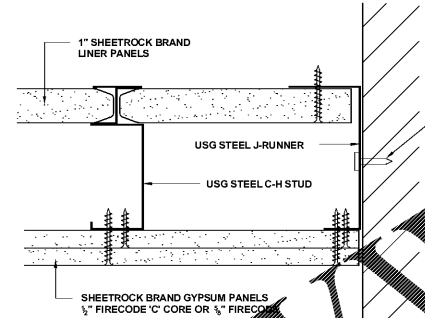
6" = 1'-0"



6

RCP DETAIL 6

1 1/2" = 1'-0"

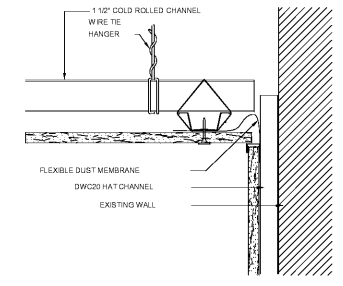


2 HR. CEILING DETAIL

5

RCP DETAIL 5

6" = 1'-0"

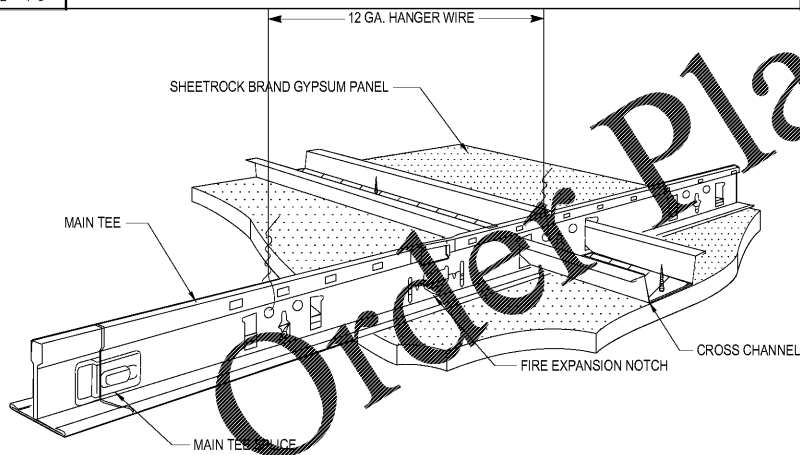


SUSPENDED CEILING WALL INTERSECTION

4

RCP DETAIL 4

6" = 1'-0"

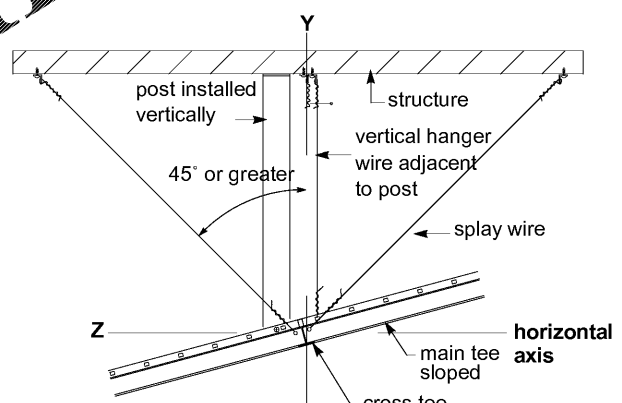


Drywall Suspension System Cross Channel

3

RCP DETAIL 3

1 1/2" = 1'-0"

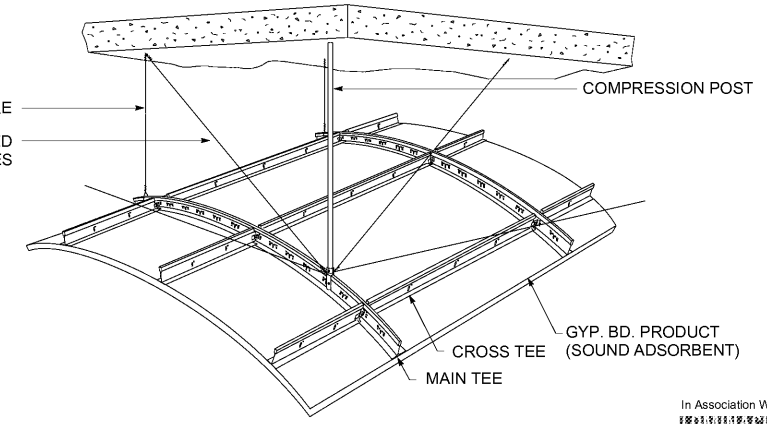


Hanger Wire-Vertical Axis Side View

2

RCP DETAIL 2

1/2" = 1'-0"



DWSS-Seismic Requirements

In Association With
SMITH
 ARCHITECTS
 301 W. Broughton St. #301
 Savannah, GA. 30401
 Ph: 912-232-5561

1

RCP DETAIL 1

1" = 1'-0"

RELEASED FOR CONSTRUCTION
 FACILITY CODE: 625-0312



JOB NAME: BEACH HIGH SCHOOL AUDITORIUM
 3001 Higgins Street
 Savannah, Georgia 31405
 Chatham County Public School System

SHEET NAME: RCP DETAILS

J. W. ROBINSON & ASSOCIATES, INC.
 ARCHITECTS • INTERIOR DESIGNERS • URBAN PLANNERS •
 1020 RALPH DAVID ABERNATHY BLVD., S.W., ATLANTA, GEORGIA 30310
 PHONE: (404) 753-4129 FAX: (404) 753-4435



DATE	BY	REVISIONS

201801

A2.02