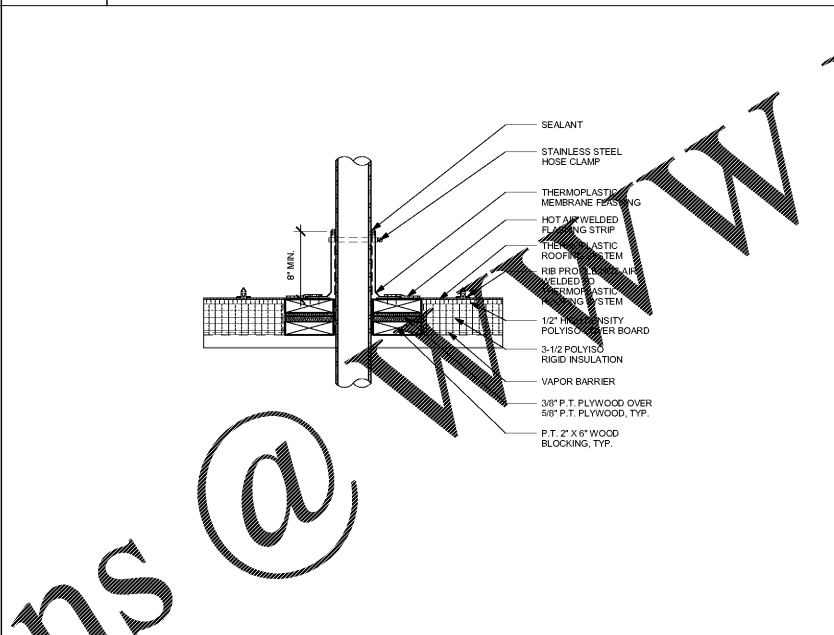
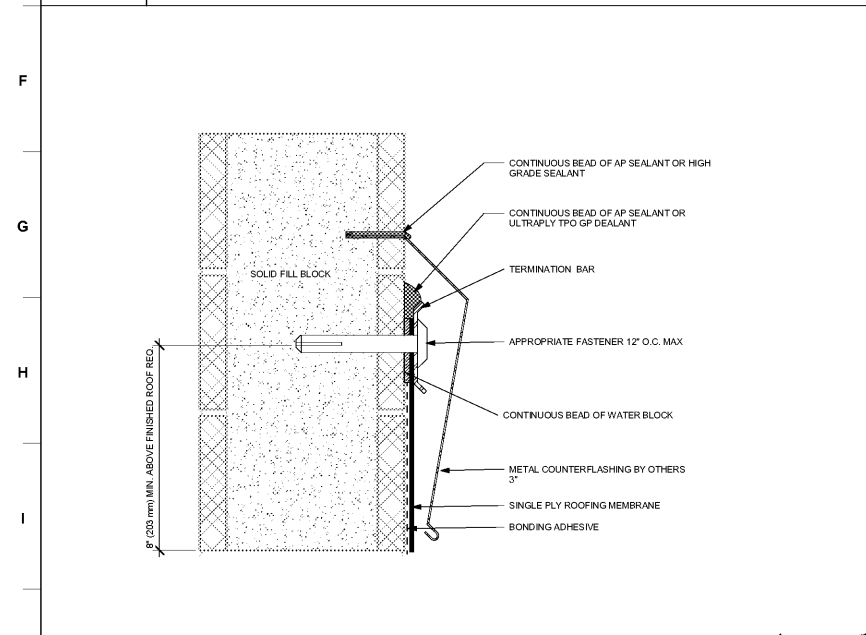


1 SCUPPER DETAIL
1" = 1'-0"

2 DOWNSPOUT AND GUTTER DETAIL
3" = 1'-0"

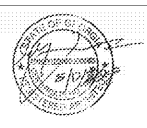
3 CURB DETAIL
3" = 1'-0"



5 REGLET COUNTERFLASHING AND TERMINATION BAR
3" = 1'-0"

PIPE PENETRATION DETAIL
1 1/2" = 1'-0"

Order Plans @ www.LDILine.com



JOB NAME: BEACH HIGH SCHOOL AUDITORIUM
3001 Higgins Street
Savannah, Georgia 31405
Chatham County Public School System

SHEET NAME: ROOF DETAILS

THIS DRAWING IS THE PROPERTY OF THE ARCHITECT AND MAY BE REPRODUCED OR TRANSMITTED IN ANY FORM OR BY ANY MEANS WITHOUT THE WRITTEN PERMISSION OF THE ARCHITECT.

J. W. ROBINSON & ASSOCIATES, INC.
ARCHITECTS • INTERIOR DESIGNERS • URBAN PLANNERS •
1020 RALPH DAVID ABERNATHY BLVD., S.W., ATLANTA, GEORGIA 30310
PHONE: (404) 753-4129 FAX: (404) 753-4435



In Association With
SAVANNAH
ARCHITECTS
301 W. Broughton St. #301
Savannah, GA. 30401
Ph: 912-232-5561

JOB NO.	201801
DESIGNER	BR/RS/MS
CHECKED	✓
DATE	SEPT. 4, 2018
100% SCHEMATIC DESIGN	✓
100% DESIGN DEVELOPMENT	✓
50% CONST. DOCUMENTS	✓
100% CONST. DOCUMENTS	✓