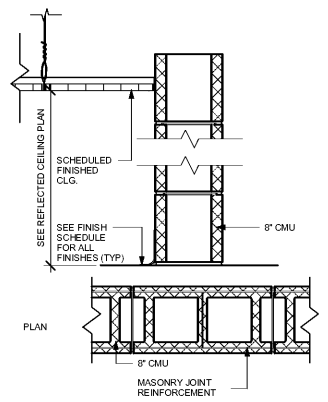
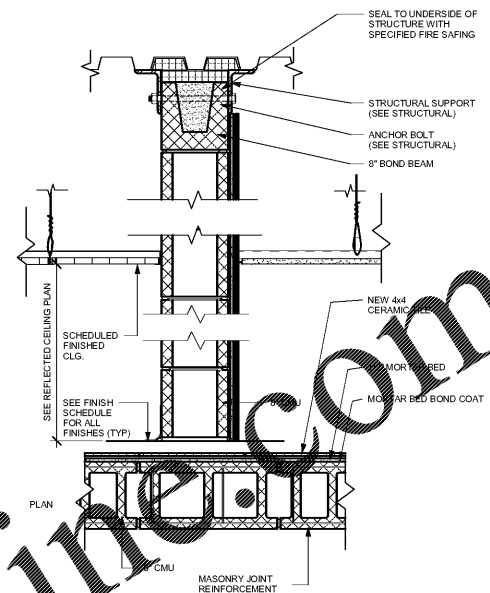


INTERIOR PARTITION 12" CMU FIRE RATED - U914
1 1/2" = 1'-0"



INTERIOR PARTITION
1 1/2" = 1'-0"

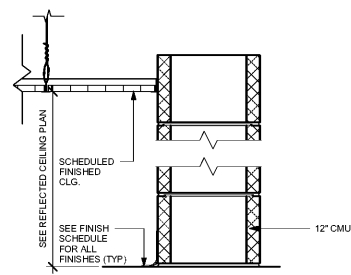


INTERIOR PARTITION
1 1/2" = 1'-0"

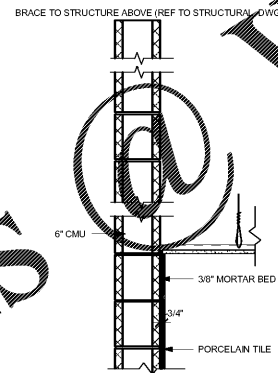
G WALL TYPE - 12" CMU W/GYPSUM (SEALED AT STRUCTURE)

H WALL TYPE - 8" CMU WALL

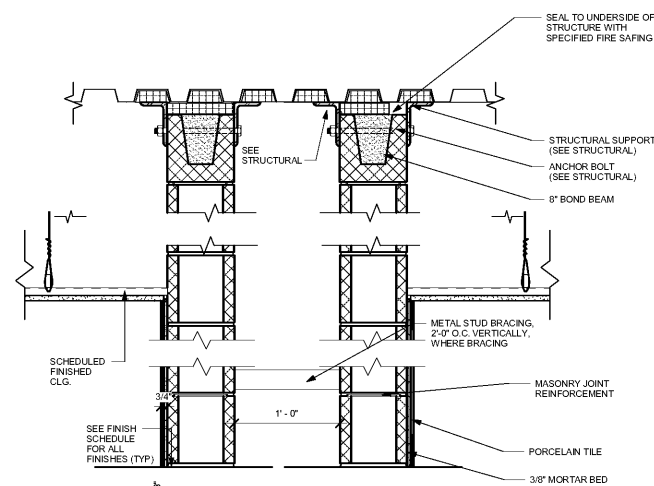
2 WALL TYPE - 8" CMU WALL W/PORCELAIN TILE



INTERIOR PARTITION
1 1/2" = 1'-0"



INTERIOR PARTITION - FULL HEIGHT PORCELAIN TILE
1" = 1'-0"



INTERIOR PARTITION
1 1/2" = 1'-0"

3 WALL TYPE - 12" CMU WALL

5 WALL TYPE - CMU AND PORCELAIN TILE

7 WALL TYPE - CMU CHASE WALL W/ PORCELAIN TILE

JOB NAME: BEACH HIGH SCHOOL AUDITORIUM
3001 Higgins Street
Savannah, Georgia 31405
Chatham County Public School System

SHEET NAME: WALL TYPES

J. W. ROBINSON & ASSOCIATES, INC.
ARCHITECTS • INTERIOR DESIGNERS • URBAN PLANNERS •
1020 RALPH DAVID ABERNATHY BLVD., S.W., ATLANTA, GEORGIA 30310
PHONE: (404) 753-4129 FAX: (404) 753-4435



In Association With
SAINT
ARCHITECTS
301 W. Broughton St. #301
Savannah, GA. 30401
Ph.: 912-232-5561

JOB NO.	201801
DRAWN: Author	CHECKED: Checker
DATE: SEPT. 4, 2018	100% SCHEMATIC DESIGN
OCT. 29, 2018	100% DESIGN DEVELOPMENT
APRIL 5, 2019	80% CONST. DOCUMENTS
MAY 17, 2019	100% CONST. DOCUMENTS
SHEET NUMBER	

LS1.05

RELEASED FOR CONSTRUCTION
FACILITY CODE: 625-0312