

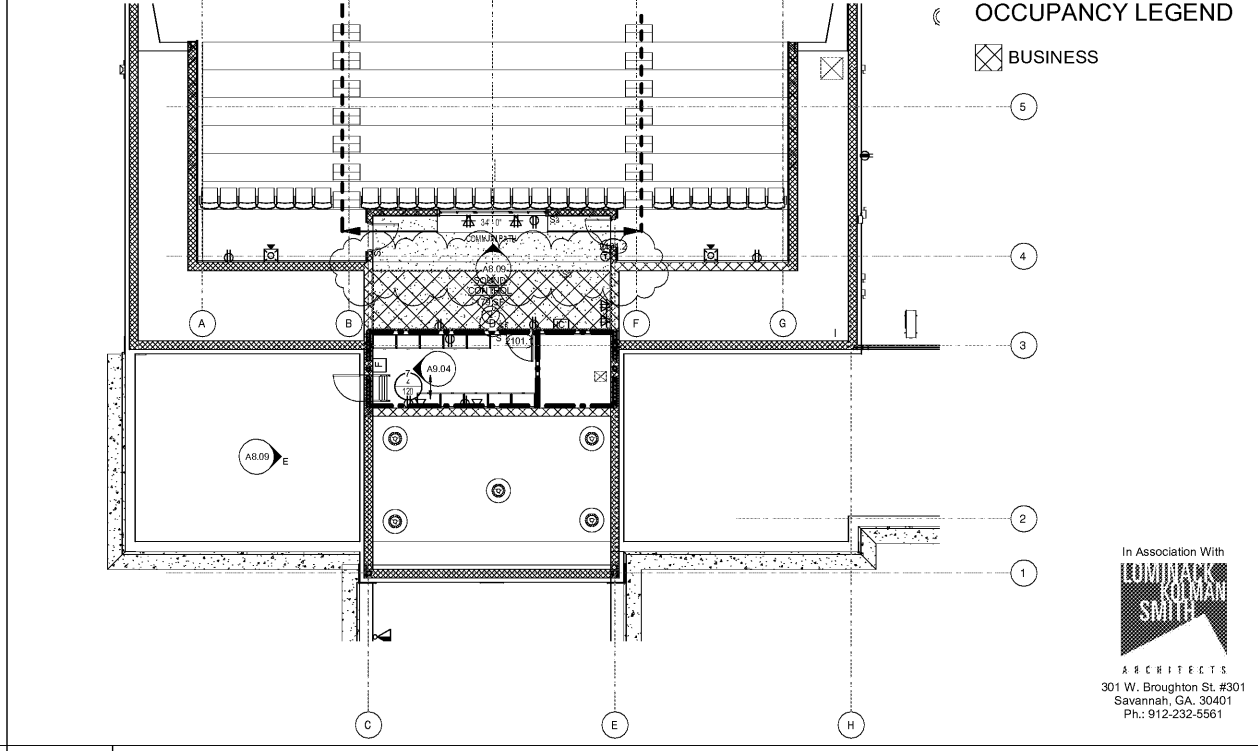
OCCUPANCY LEGEND

- ASSEMBLY - CONCENTRATED USE, W/O FIXED SEATING
- ASSEMBLY - FIXED SEATING
- ASSEMBLY - STAGES
- BUSINESS
- INDUSTRIAL - GENERAL AND HIGH HAZARD INDUSTRIAL

MEANS OF EGRESS LEGEND

<p>DISTANCES</p> <p>COMMON PATH OF TRAVEL (XX FT. MAX) → 0'-2'12" COMMON PATH →</p> <p>DEAD END CORRIDOR (XX FT. MAX) → 0'-2'12" DEAD END →</p> <p>TRAVEL DISTANCE: - - - - -</p> <p>MAX DIAGONAL DISTANCE: ← 0'-2'12" MAX DIAGONAL →</p> <p>EXIT SEPARATION: ← 0'-2'12" EXIT SEPARATION →</p>	<p>WALL RATINGS</p> <p>1 HOUR SEPARATION ASSEMBLY OR FIRE PARTITION: [Symbol]</p> <p>2 HOUR SEPARATION ASSEMBLY OR FIRE PARTITION: [Symbol]</p>	<p>LIFE SAFETY PLAN LEGEND</p> <p>FEC SEMI-RECESSED FIRE EXTINGUISHER CABINET: [Symbol]</p> <p>FE SURFACE MOUNTED FIRE EXTINGUISHER: [Symbol]</p> <p>NUMBER OF OCCUPANTS IN SPACE: [Symbol]</p> <p>REQUIRED BUILDING VENT: [Symbol]</p>																																												
<p>APPLICABLE CODES</p> <p>BUILDING: INTERNATIONAL BUILDING CODE (INTERNATIONAL BUILDING CODE), 2012 EDITION WITH GEORGIA AMENDMENTS (2014), 2015 (2017), 2018</p> <p>FIRE: INTERNATIONAL FIRE PREVENTION CODE (INTERNATIONAL FIRE CODE), 2012 EDITION WITH GEORGIA AMENDMENTS (2014)</p> <p>LIFE SAFETY: NATIONAL FIRE PROTECTION ASSOCIATION (NFPA) 101 LIFE SAFETY CODE, 2012</p> <p>MECHANICAL: STANDARD MECHANICAL CODE (INTERNATIONAL MECHANICAL CODE), 2012 EDITION WITH GEORGIA AMENDMENTS (2014), 2015</p> <p>PLUMBING: STANDARD PLUMBING CODE (INTERNATIONAL PLUMBING CODE), 2012 EDITION WITH GEORGIA AMENDMENTS (2014), 2015</p> <p>ELECTRICAL: NATIONAL ELECTRICAL CODE, 2017 EDITION WITH NO GEORGIA AMENDMENTS</p> <p>FUEL: INTERNATIONAL FUEL GAS CODE, 2012 EDITION WITH GEORGIA AMENDMENTS (2014), 2015</p> <p>ENERGY: INTERNATIONAL ENERGY CONSERVATION CODE 2010, WITH GEORGIA AMENDMENTS (2011), 2012</p> <p>ACCESSIBILITY: GEORGIA HANDICAPPED ACCESSIBILITY LAW (20-5-203 ADA 2010)</p>	<p>LEVEL EXIT LOAD / CAPACITY</p> <p>LEVEL EXIT LOAD / CAPACITY @ CORRIDOR: [Symbol]</p> <p>EXIT CAPACITY * DOOR WIDTH - REDUCTION TO ACHIEVE CLEAR OPENING X LOAD FACTOR: [Symbol]</p> <p>LEVEL EXIT LOAD / CAPACITY @ CORRIDOR: [Symbol]</p> <p>EXIT CAPACITY * CLEAR OPENING X LOAD FACTOR: [Symbol]</p>	<p>CODE SUMMARY</p> <p>Building Code Information: Occupancy Classification: Assembly, A Construction Type II-B Occupant Use: Assembly, Business, Storage Mixed Construction Allowable Height: 5 Stories Elevation: 50'-0" Allowable Building height and story increase due to automatic sprinkler system. IBC Section 503.2 - Allowable building area increase due to street frontage. Section 503.3 - Allowable building area increase due to automatic sprinkler system. Total Occupant Load: 1,127</p> <p>Building Area: Total Gross Square Ft.: 18,432 SF</p> <p>Fire-Resistance Rating Requirements for Building Elements: Structural Frame - 0 hr Bearing Walls: • Exterior - 0 hr • Interior - 0 hr Nonbearing Walls and Partitions, Exterior: (See Table 602, 2012 IBC) Nonbearing Walls and Partitions, Interior - 0 hr Floor Construction - 0 hr Roof Construction - 0 hr</p> <p>Exit Travel Distance - Sprinkled Building Assembly: 250'-0"</p> <p>Common Path of Travel - Sprinkled Building Assembly: A common path of travel shall be permitted for the first 20 ft from any point where the common path serves any number of occupants, and for the first 75 ft from any point where the common path serves not more than 50 occupants.</p>																																												
<p>OCCUPANCY LOAD - NFPA</p> <table border="1"> <thead> <tr> <th>NAME</th> <th>AREA</th> <th>OCCUPANT USE GROUP (LSC TABLE 7.3.1.2)</th> <th>OCC. LOAD FACTOR</th> <th>COUNT</th> </tr> </thead> <tbody> <tr> <td>FIRST FLOOR LOBBY/PRE-FUNCTIONAL SPACE</td> <td>1598 SF</td> <td>ASSEMBLY - CONCENTRATED USE, W/O FIXED SEATING</td> <td>7</td> <td>228</td> </tr> <tr> <td>GALLERY/DISPLAY AREA</td> <td>603 SF</td> <td>ASSEMBLY - CONCENTRATED USE, W/O FIXED SEATING</td> <td>7</td> <td>87</td> </tr> <tr> <td>SCENE SHOP</td> <td>936 SF</td> <td>INDUSTRIAL - GENERAL AND HIGH HAZARD INDUSTRIAL</td> <td>100</td> <td>10</td> </tr> <tr> <td>STAGE AND CROSSOVER</td> <td>2554 SF</td> <td>ASSEMBLY - STAGES</td> <td>17</td> <td>43</td> </tr> <tr> <td>AUDITORIUM</td> <td>7745 SF</td> <td>ASSEMBLY - SEATED SEATING</td> <td>12.7</td> <td>608</td> </tr> <tr> <td>WORKROOM</td> <td>99 SF</td> <td>BUSINESS</td> <td>100</td> <td>1</td> </tr> <tr> <td>SOUND CONTROL</td> <td>179 SF</td> <td>BUSINESS</td> <td>100</td> <td>2</td> </tr> <tr> <td></td> <td></td> <td></td> <td></td> <td>1108</td> </tr> </tbody> </table>	NAME	AREA	OCCUPANT USE GROUP (LSC TABLE 7.3.1.2)	OCC. LOAD FACTOR	COUNT	FIRST FLOOR LOBBY/PRE-FUNCTIONAL SPACE	1598 SF	ASSEMBLY - CONCENTRATED USE, W/O FIXED SEATING	7	228	GALLERY/DISPLAY AREA	603 SF	ASSEMBLY - CONCENTRATED USE, W/O FIXED SEATING	7	87	SCENE SHOP	936 SF	INDUSTRIAL - GENERAL AND HIGH HAZARD INDUSTRIAL	100	10	STAGE AND CROSSOVER	2554 SF	ASSEMBLY - STAGES	17	43	AUDITORIUM	7745 SF	ASSEMBLY - SEATED SEATING	12.7	608	WORKROOM	99 SF	BUSINESS	100	1	SOUND CONTROL	179 SF	BUSINESS	100	2					1108	<p>STAIR EXIT LOAD / CAPACITY</p> <p>MEASUREMENT OF MEANS OF EGRESS: THE WIDTH OF MEANS OF EGRESS SHALL BE MEASURED IN THE CLEAR AT THE NARROWEST POINT OF THE EGRESS COMPONENTS. GENERAL PROJECTIONS WITHIN THE MEANS OF EGRESS OF NOT MORE THAN 1/2" IN STAIRWAYS SHALL BE PERMITTED AT A HEIGHT OF 36" AND BELOW.</p> <p>Diagram showing stair exit load/capacity measurement with labels: CLEAR EXIT WIDTH, OCCUPANT LOAD, EXIT CAPACITY, STAIR EXIT LOAD / CAPACITY.</p>
NAME	AREA	OCCUPANT USE GROUP (LSC TABLE 7.3.1.2)	OCC. LOAD FACTOR	COUNT																																										
FIRST FLOOR LOBBY/PRE-FUNCTIONAL SPACE	1598 SF	ASSEMBLY - CONCENTRATED USE, W/O FIXED SEATING	7	228																																										
GALLERY/DISPLAY AREA	603 SF	ASSEMBLY - CONCENTRATED USE, W/O FIXED SEATING	7	87																																										
SCENE SHOP	936 SF	INDUSTRIAL - GENERAL AND HIGH HAZARD INDUSTRIAL	100	10																																										
STAGE AND CROSSOVER	2554 SF	ASSEMBLY - STAGES	17	43																																										
AUDITORIUM	7745 SF	ASSEMBLY - SEATED SEATING	12.7	608																																										
WORKROOM	99 SF	BUSINESS	100	1																																										
SOUND CONTROL	179 SF	BUSINESS	100	2																																										
				1108																																										

1 FIRE EXTINGUISHER - PLAN DETAIL 2 FIRE EXTINGUISHER - SECTION DETAIL



4 SECOND FLOOR RELEASED FOR CONSTRUCTION FACILITY CODE: 625-0312

J. W. ROBINSON & ASSOCIATES, INC.
 ARCHITECTS • INTERIOR DESIGNERS • URBAN PLANNERS •
 1020 RALPH DAVID ABERNATHY BLVD., S.W., ATLANTA, GEORGIA 30310
 PHONE: (404) 753-4129 FAX: (404) 753-4435

BEACH HIGH SCHOOL AUDITORIUM
 3001 Higgins Street
 Savannah, Georgia 31405
 Chatham County Public School System

LIFE SAFETY PLAN

JOB NAME: BEACH HIGH SCHOOL AUDITORIUM
 SHEET NAME: LIFE SAFETY PLAN

DATE: 11/15/18
 REVISION 1

DESIGNED BY: CDB
 CHECKED BY: SJ
 DRAWN BY: CDB
 DATE: SEPT 4, 2018 100% SCHEMATIC DESIGN
 OCT 29, 2018 100% DESIGN DEVELOPMENT
 APRIL 5, 2019 80% CONST. DOCUMENTS
 MAY 17, 2019 100% CONST. DOCUMENTS

201801
 SHEET NUMBER

In Association With

 ARCHITECTS
 301 W. Broughton St. #301
 Savannah, GA. 30401
 Ph: 912-232-5561