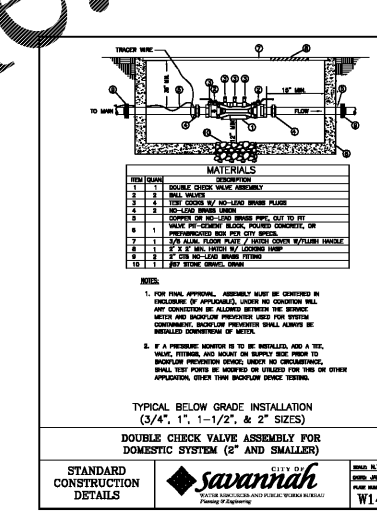
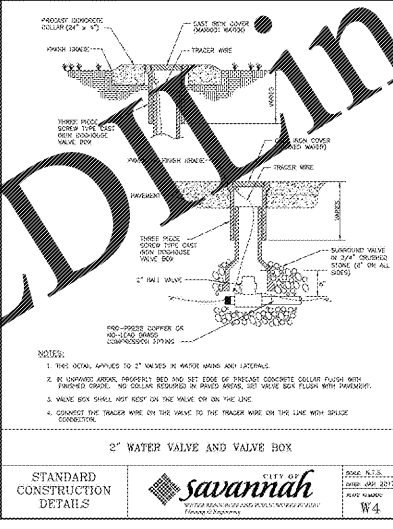
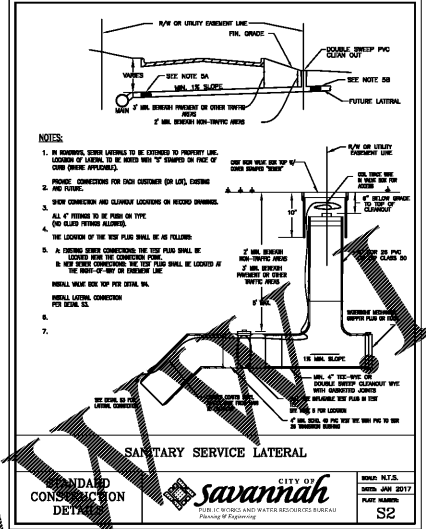
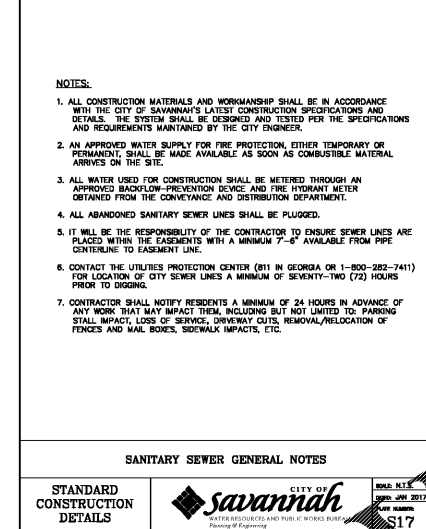
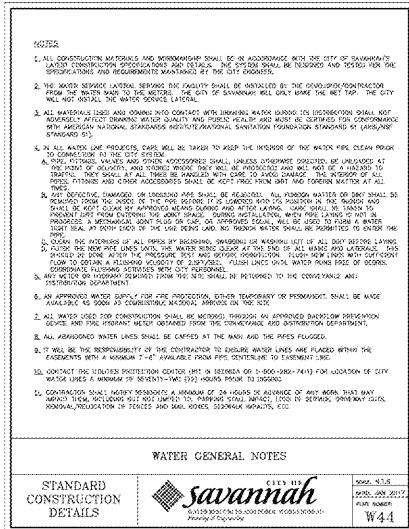
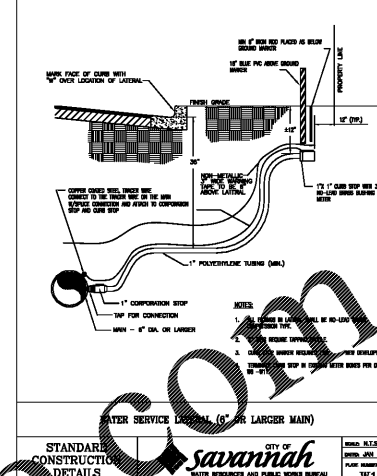
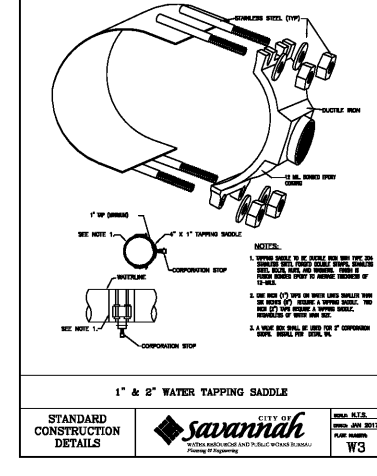
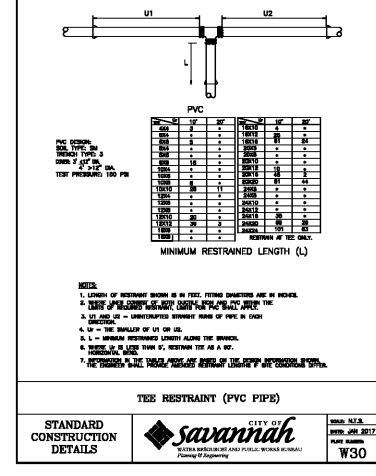
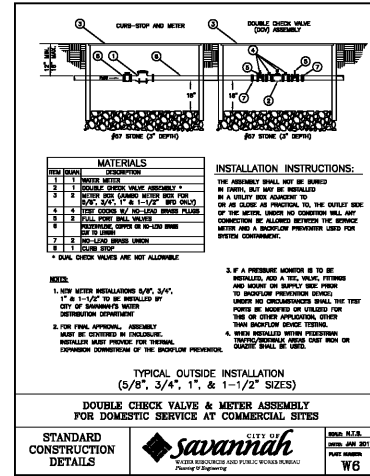
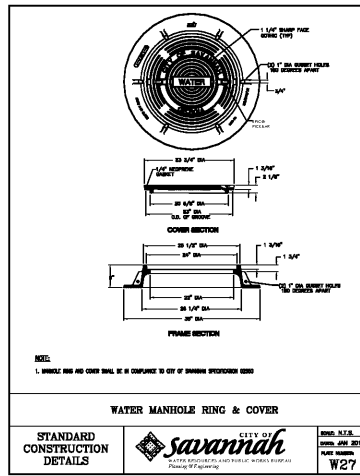


Order Plans @ www.wvonline.com



JOB NAME: BEACH HIGH SCHOOL AUDITORIUM
 SHEET NAME: SITE LAYOUT

J. W. ROBINSON & ASSOCIATES, INC.
 ARCHITECTS • INTERIOR DESIGNERS • URBAN PLANNERS •
 1020 RALPH DAVID ABERNATHY BLVD., S.W., ATLANTA, GEORGIA 30310
 PHONE: (404) 753-4129 FAX: (404) 753-4435



JOB NO	201801
DESIGNER	DIVISION
CHECKED	DIVISION
DATE	SEPT 14, 2016 100% SCHEMATIC DESIGN
DATE	OCT 29, 2016 100% DESIGN DEVELOPMENT
DATE	APRIL 5, 2018 80% CONST. DOCUMENTS
DATE	MAY 17, 2019 100% CONST. DOCUMENTS
SHEET NUMBER	

UTILITY DETAILS



7 East Congress Street • Suite 306 • Savannah, Georgia 31401
 Phone: 912-721-6999
 www.wolverton.com

NOT RELEASED FOR CONSTRUCTION
 FACILITY CODE: 625-0312

D-3