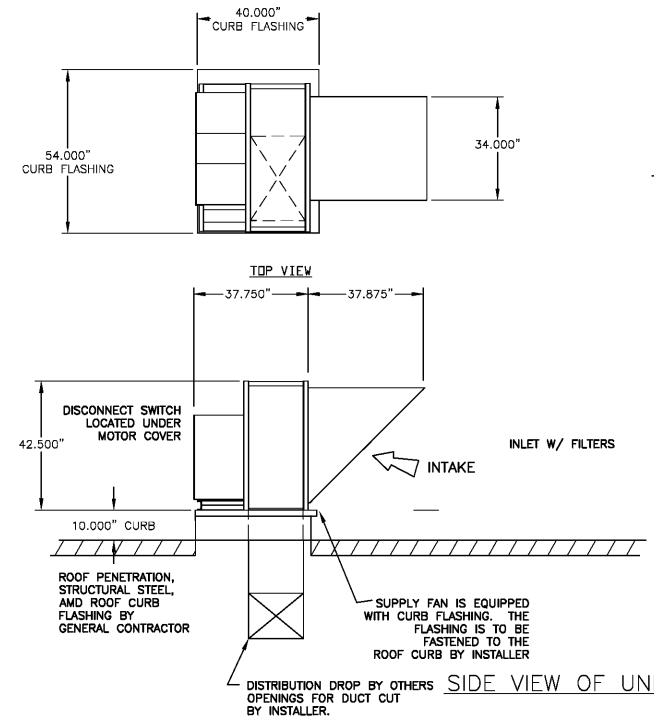
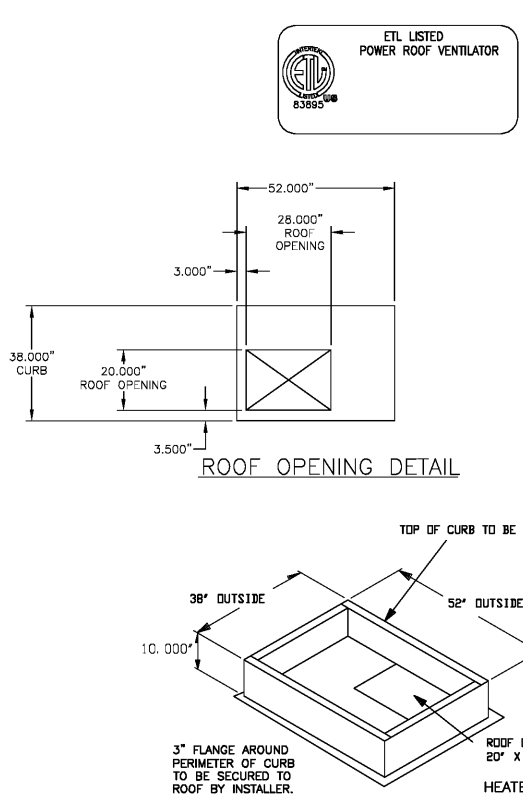


HEATED MAKEUP AIR SUPPLY SYSTEM
FRYER/BROILER HOODS

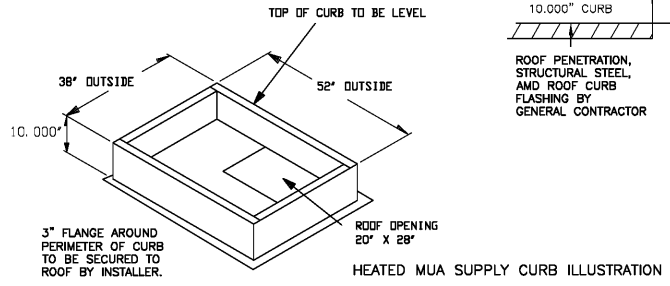
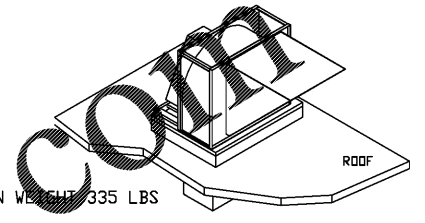
| | | SUPPLIED BY: | | | | | | | |
|-----|----------|---|---|---|---|---|---|---|---|
| QTY | PART NO. | DESCRIPTION | M | G | I | E | F | H | P |
| 1 | | MAKEUP AIR FAN 2HP 208V 3PH W/ FILTERED INLET | X | | | | | | |
| 1 | | INSTALL FAN | | X | | | | | |
| 1 | | ELECTRICAL HOOK-UP | | | X | | | | |
| 1 | | GAS HOOKUP | | | | | | X | |
| 1 | | DISCONNECT SWITCH MOUNTED TO FAN | X | | | | | | |
| 1 | | ROOF CURB FOR SUPPLY 38" X 52" X 10" | X | | | | | | |
| 1 | | PROVIDE ROOF OPENING | X | | | | | | |
| 1 | | MUA DISTRIBUTION DROP | | | | | | | X |
| 1 | | CUT OPENINGS IN DIST. DROP FOR MUA TRUNK LINE | X | | | | | | |
| AR | | TRUNK LINES FROM DISTRIBUTION DROP | | | X | | | | X |
| AR | | DUCT SUPPORTS AND HANGERS | | | X | | | | |
| 1 | | PROVIDE AND INSTALL DUCTWORK TO HOOD MUA CONNECTIONS | X | | | | | | |
| 1 | | COMPLETE STORE AIR BALANCE | X | | | | | | |



SF-1 SUPPLY FAN
MARSHALL AIR #2420 MAKEUP AIR FAN

TYPE: ROOF MOUNTED, NON-HEATED
TOTAL CFM: 2100 CFM
O.A. MINIMUM: 2100 CFM
TOTAL S.P. (EXTERNAL): 1.00"
HORSEPOWER: 2.0
VOLTAGE: 208/3/60
UNIT WEIGHT: 335 LBS.

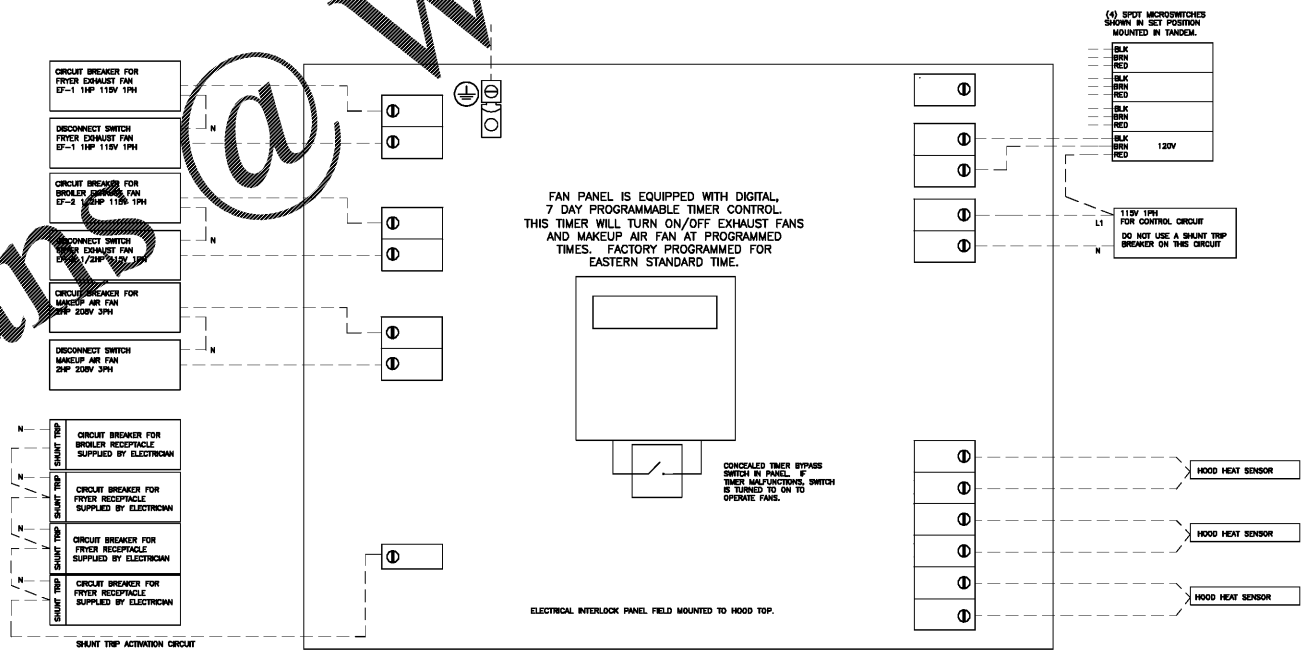
- FAN NOTES:**
1. WIRING AND INSTALLATION TO BE PER APPLICABLE NATIONAL ELECTRICAL CODE AND BUILDING CODES.
 2. ALWAYS TURN THE FAN ELECTRICAL DISCONNECT SWITCH OR SWITCHES TO THE OFF POSITION BEFORE CLEANING OR SERVICING FANS.
 3. INTERLOCK MAKEUP AIR SUPPLY FAN WITH THE EXHAUST FANS PER APPLICABLE CODES.



SF-1 NON-HEATED MAKEUP AIR FAN
SCALE: 3/8" = 1' - 0"

Order Plans @ www.LDILine.com

IMPORTANT ELECTRICIAN
DUE TO SITE DIFFERENCES AND REQUIREMENTS, USE THE SITE SPECIFIC SCHEMATIC SET THAT IS PROVIDED WITH EACH HOOD SYSTEM AND CONTROL PANEL. THE SCHEMATIC IS SENT INSIDE EACH CONTROL PANEL AND PROVIDED WITH EACH HOOD DETAIL DRAWINGS.



HOOD PANEL OPERATION

HOODS ARE EQUIPPED WITH HEAT SENSORS WHICH INTERLOCK TO THE EXHAUST FANS. IF FAN SWITCH IS OFF AND COOKING EQUIPMENT IS TURNED ON, EXHAUST FAN WILL TURN ON. PANEL IS ALSO EQUIPPED WITH PROGRAMMABLE TIMER. THIS TIMER WILL TURN ON/OFF EXHAUST AND MAKEUP AIR FANS AT PROGRAMMED TIMES. SEE BELOW FOR DESCRIPTION OF INTERLOCK SYSTEM.

- NORMAL (NO FIRE) DURING OPERATING HOURS:**
- EXHAUST FAN(S) ON
 - MAKEUP AIR UNIT ON
 - COOKING EQUIPMENT RECEPTACLES HAVE VOLTAGE TO ALLOW FOR OPERATION
- NORMAL (NO FIRE) AFTER HOURS:**
- EXHAUST FAN(S) OFF
 - MAKEUP AIR UNIT OFF
 - HOODS EQUIPPED WITH HEAT SENSORS. IF COOKING EQUIPMENT IS TURNED ON, FAN WILL POWER ON.
- ALARM (FIRE) DURING OPERATING HOURS:**
- EXHAUST FAN(S) REMAIN ON
 - MAKEUP AIR UNIT SHUTS OFF
 - ELECTRICAL POWER TO EQUIPMENT UNDER HOOD TURNS OFF
- ALARM (FIRE) AFTER HOURS:**
- EXHAUST FAN(S) POWER ON.
 - MAKEUP AIR UNIT REMAINS OFF
 - ELECTRICAL POWER TO EQUIPMENT UNDER HOOD REMAINS OFF

INSTALLATION DRAWING INDEX
NONHEATED MAKEUP AIR LOCATIONS

| SHEET NO. | DRAWING NO. | TITLE |
|-----------|-------------|-----------------------------------|
| 1 | 402804SPL1 | GENERAL INDIX, AIR BALANCE, NOTES |
| 2 | 402805SPL1 | HOOD DETAILS |
| 3 | 402806SPL1 | EXHAUST FAN, FIRE SYSTEM |
| 4 | 402810SPL1 | NONHEATED MUA FAN, SCHEMATIC |



This drawing is the property of Marshall Air Systems, Inc., and contains confidential and proprietary information of Marshall Air Systems, Inc. This drawing is provided to the recipient on loan only for purposes of reference, installation, use and/or maintenance of the depicted equipment of Marshall Air Systems, Inc., and for no other purpose. This drawing shall not be copied, reproduced, loaned, disposed of or otherwise disclosed to any third party, either directly or indirectly except in carrying out the aforesaid purposes, and shall be returned to Marshall Air Systems, Inc., upon request. The recipient's acceptance of this drawing shall be deemed to constitute express consent and agreement to the foregoing terms.

| REV | DESCRIPTION | DATE | REV. BY | DATE | REV. DATE |
|-----|-------------|-----------|---------|------|-----------|
| 1 | FW | 9/18/2018 | | | |

DRAWN BY: FW DATE: 9/18/2018 REV. DATE:
 EXH SYS PRODUCT CLASS: VNT
 INSTALLATION DWG MANUF: MARSHALL
 SCALE: AS NOTED
 MARSHALL AIR SYSTEMS, INC.
 EXH SYS, CAPTAIN DS GAFFNEY NONHEATED
 MAKEUP AIR FAN, SCHEMATIC
 DWG. NO.: 402810SPL1
 CP2QNONSPL1