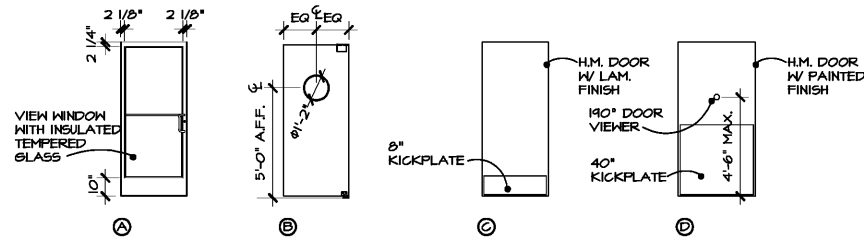


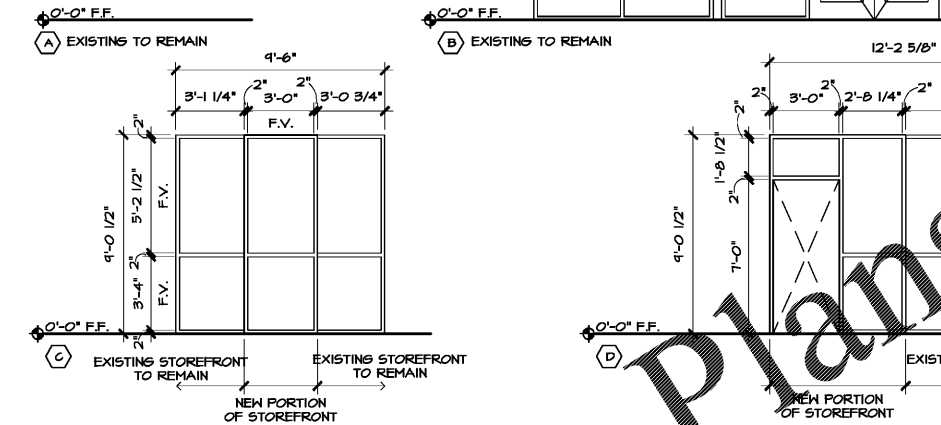
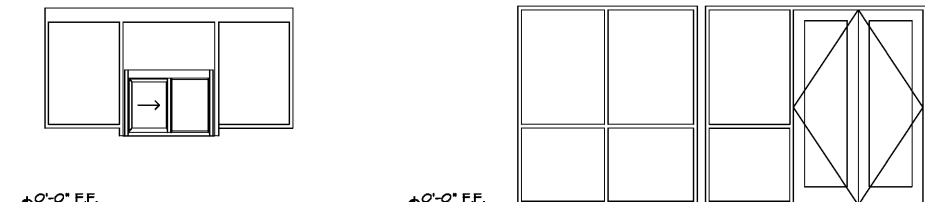
FRAME TYPES

- NOTES:
- ALL HOLLOW METAL FRAMES TO BE CONT. WELDED AND GROUNDING.
 - FRAMES SHALL MEET REQUIRED RATINGS SHOWN SPECIFIED AND REQUIRED BY GOVERNING AUTHORITIES.



DOOR TYPES

- NOTES:
- ALL DOORS ARE TO BE 3/4" THICK UNLESS OTHERWISE NOTED.
 - ALL ALUMINUM EXTERIOR DOORS TO MATCH CLEAR ANODIZED WINDOW MULLIONS.
 - PAINT EXTERIOR HOLLOW METAL DOORS AND FRAMES F-1.
 - SEE DOOR SCHEDULE FOR DIMENSIONS OF HEIGHTS AND WIDTHS.
 - ALL EXTERIOR HOLLOW METAL DOORS TO BE INSULATED AND GALVANIZED.
 - ALL HOLLOW METAL DOORS SHALL BE 16 GA. STEEL OF WELDED CONSTRUCTION.



WINDOW TYPES

- NOTES:
- FIELD VERIFY ALL OPENINGS PRIOR TO FABRICATION.
 - ALL WINDOWS ARE REQUIRED TO BE TEMPERED OR SAFETY GLASS.
 - ALL EXTERIOR WINDOWS TO BE 1" INSULATED GLASS.

GENERAL NOTES:

- ALL HARDWARE SHALL BE FURNISHED AND INSTALLED BY THE GENERAL CONTRACTOR UNLESS NOTED OTHERWISE.
- HARDWARE ITEMS LISTED AS "BY MANUFACTURER" SHALL BE FURNISHED BY THE STOREFRONT MANUFACTURER. EQUIVALENT STOREFRONT MANUFACTURERS AND THEIR HARDWARE MAY BE ACCEPTABLE AS SPECIFIED IF PRE-APPROVED. PRE-APPROVED ALTERNATES ARE LISTED IN THE SPECIFICATIONS. MANUFACTURERS NOT LISTED MUST OBTAIN WRITTEN APPROVAL FROM CAPTAIN D'S CORPORATE CONSTRUCTION DEPARTMENT.
- ALL HARDWARE FINISHES SHALL BE USED UNLESS OTHERWISE NOTED.
- ALL DOORS TO BE KEYPED TO THE SAME KEY PATTERN.
- ALL LOCKS TO HAVE 6-PIN INTERCHANGEABLE CORES SUPPLIED AND INSTALLED BY THE GENERAL CONTRACTOR. ALL EXTERIOR DOORS TO BE PROVIDED WITH CONSTRUCTION CORES AND REPLACED WITH PERMANENT CORES SHIPPED OWNER OR FRANCHISEE BY FACILITY TURNOVER.
- REFERENCE SPECIFICATION SECTION 08-410 AND 08-711.
- ALL DOORS AND DOOR HARDWARE SHALL BE ADA COMPLIANT.
- EXIT HARDWARE SHALL MEET OR EXCEED ALL FEDERAL, STATE, AND LOCAL CODES AND ORDINANCES.
- ALL THRESHOLDS SHALL MEET OR EXCEED ADA REQUIREMENTS.
- PAINT HOLLOW METAL FRAMES AND DOORS, WHERE SCHEDULED WITH 2 FINISH COATS OF HIGH GLOSS ACRYLIC ENAMEL. SEE ELEVATIONS AND FINISH SCHEDULE FOR MORE INFORMATION.
- SEE RESPONSIBILITY MATRIX FOR RESPONSIBILITY OF MATERIALS AND/OR LABOR.
- PROVIDE AND INSTALL SIGNAGE AS NOTED IN RESPONSIBILITY MATRIX.
- PROVIDE AND INSTALL SIGNAGE AT DOOR #1 TO READ: "THIS DOOR MUST REMAIN UNLOCKED WHEN THIS BUILDING IS OCCUPIED". LETTERS SHALL BE 1" TALL AND MOUNTED ON A CONTRASTING BACKGROUND AS DESCRIBED IN THE ADA.
- ADJUST CLOSERS SUCH THAT SNEED PERIOD FOR A DOOR IN AN OPEN POSITION OF 10 DEGREES SHALL TAKE AT LEAST 3 SECONDS TO MOVE TO A POINT 3" FROM THE LATCH MEASURED TO THE LEADING EDGE OF THE DOOR. MAXIMUM FORCE TO OPEN DOOR SHALL BE 5 LB.
- ALL HARDWARE SHALL BE FURNISHED BY THE MANUFACTURE FROM DOOR #5 (ELIASON EAST SWING DOOR) AND DOORS #6 AND #7 (MARLITE).

NO.	SPACE NAME	DOOR SIZE	DOOR			FRAME			HDWR SET	REMARKS			
			TYPE	MAT.	FINISH	TYPE	MAT.	FINISH					
1	ENTRY 101 (PAIR) (EXISTING TO REMAIN)	3'-0" X 8'-10" X 1 3/4"	A	ALUMINUM	MATTE BLACK	A	ALUM	MATTE BLACK	---	---	---	1	EXISTING DOOR TO REMAIN SET IN WINDOW TYPE "B"
2	DINING 102	3'-0" X 7'-0" X 1 3/4"	A	ALUMINUM	MATTE BLACK	A	ALUM	MATTE BLACK	5/A-II	6/A-III	11/A-III	1	SET IN WINDOW TYPE "D"
3	NOT USED	---	---	---	---	---	---	---	---	---	---	---	---
4	UTILITY 116	3'-6" X 7'-0" X 1 3/4"	D	HM	PAINT	A**	HM	F-1	4/A-II	9/A-III	14/A-III	4	EXISTING DOOR AND FRAME TO REMAIN - INSTALL NEW HDWR
5	SERVING 104	3'-0" X 7'-0" X 1"	B*	COMPACT HIGH PRESSURE LAMINATE*	DESIGNER WHITE (D354-60)*	B**	HM	PT	13/A-III	13/A-III SIM	---	*	FALCON SERIES MODEL FS1 SINGLE OPENING HIGH TRAFFIC DOOR
6	WOMEN'S RESTROOM 10B	3'-0" X 7'-0" X 1 3/4"	C**	HM.	FL LAM	A**	ALUM.	SATIN	3/A-III	8/A-III	---	5**	FORMICA, NATURAL BIRCH / DOORS.
7	MEN'S RESTROOM 10T	3'-0" X 7'-0" X 1 3/4"	C**	HM.	FL LAM	A**	ALUM.	SATIN	3/A-III	8/A-III	---	*	FORMICA, NATURAL BIRCH / DOORS.

NOTES:

- REFER TO T-11 FOR VENDOR CONTACT INFORMATION, TYP.
- HARDWARE GROUPS INDICATED FOR EXISTING DOORS ARE FOR VERIFICATION PURPOSES. ITEMS NOT INSTALLED IN THE EXISTING DOOR ARE TO BE REPLACED WITH HARDWARE ITEMS LISTED IN THE HARDWARE SCHEDULE.

*BY PHOENIX DOOR SYSTEMS
** BY THE THOMAS GROUP

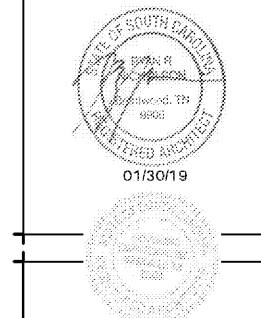
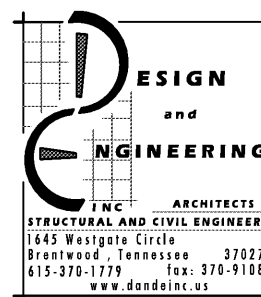
NO.	SIZE (WIDTH X HEIGHT)	MATERIAL	GLAZING	HEAD DETAIL	JAMB DETAIL	SILL DETAIL	FINISH	REMARKS
A	4'-0" X 3'-0"	ALUMINUM	1/4" SINGLE PANE	---	---	---	MATTE BLACK ANODIZED	EXISTING SERVICE WINDOW TO REMAIN
B	18'-7" X 3'-0"	ALUMINUM	EXISTING TO REMAIN	---	---	---	MATTE BLACK ANODIZED	FIELD VERIFY ALL OPENINGS AND DIMENSIONS OF PORTIONS OF STOREFRONT TO BE REPLACED. INSTALLATION PER MANUFACTURER SPECS. SEE COMCHECK REGARDING U-FACTOR AND SHSC MINIMUMS.
C	9'-8" X 4'-1 1/2"	ALUMINUM	SOLAR BAN 60 (2) CLEAR+CLEAR, U-FACTOR: .29; SF6C: .32	5/A-II	---	15/A-III	MATTE BLACK ANODIZED	
D	12'-2 5/8" X 4'-1 1/2"	ALUMINUM	SOLAR BAN 60 (2) CLEAR+CLEAR, U-FACTOR: .29; SF6C: .34	5/A-II	6/A-III	15/A-III	MATTE BLACK ANODIZED	

SET	QTY PER DOOR	PRODUCT	MANUF.	MODEL NO.	REMARKS
1	2	SINGLE ACTING TOP & BOTTOM OFFSET PIVOTS	KANNEER	---	FURNISHED & INSTALLED BY ALUMINUM STOREFRONT CONTRACTOR
1	1	DEADLOCK	ADAMS RITE	1850 SERIES	
1	1	MORTISE CYLINDER	AMERICAN	---	
1	1	THUMBTURN	AMERICAN	---	
2	2	CP II PUSH BAR	KANNEER	---	
2	2	CO9 FULL	KANNEER	---	
2	2	CLOSER	YALE	54	
1	1	THRESHOLD	KANNEER	64-143	
2	1	SINGLE ACTING TOP & BOTTOM OFFSET PIVOTS	KANNEER	---	
1	1	CP II PUSH BAR	KANNEER	---	
1	1	CO9 FULL	KANNEER	---	
1	1	CLOSER	YALE	54	
1	1	CLOSER	NORTON	1604BC	
3	1-1/2 PAIR	HINGES	MCKINNEY	TA2714 4 1/2 x 4 1/2 26D	---
1	1	PASSAGE SET	DESIGN HDWR	X75-F-26D 2 3/4 x ASA	---
1	1	DOOR CLOSER	NORTON/DESIGN HDWR	316 x ALUM x 5NB	---
1	1	KICK PLATE	ROCKWOOD	8" x 22" x 3/2D	---
1	1	HINGE PIN DOOR STOP	ROCKWOOD	52B NP	---
3	3	SILENCERS	NORTON	60B	---

SET	QTY PER DOOR	PRODUCT	MANUF.	MODEL NO.	REMARKS
4	1-1/2 PAIR	HEAVY WEIGHT HINGES	MCKINNEY	T4A5786 4 1/2 x 4 1/2 26D NRP	---
1	1	REINFORCEMENT PIVOT	BOOMER	1923F2C x RH	---
1	1	EXIT ALARM	ALARM LOCK	700 x 052B x 4"	PREP FRAME TO RECEIVE PANIC HARDWARE
1	1	RIM CYLINDER	DESIGN HARDWARE	30B x 26D "ID" CORE	---
1	1	DOOR CLOSER	NORTON/DESIGN HDWR	1605BC x ALUM	---
1	1	PULL PLATE	ROCKWOOD	106 x 70B x 3/2D	LOCATE PULL ON INSIDE OF DOOR
1	1	DOOR VIEWER	ROCKWOOD	622 DGRM	---
1	1	KICK PLATE	ROCKWOOD	12 x 40 630	---
1	1	CANE BOLT	---	L250 ZN 24"	---
1	1	THRESHOLD	NATIONAL GUARD PRODUCTS	425 4B"	---
1	1	WEATHER-STRIPPING	NATIONAL GUARD PRODUCTS	160V 48B4	---
1	1	DOOR SNEEP	NATIONAL GUARD PRODUCTS	200NA x 48"	---
3	3	SILENCERS	NORTON	60B	---
5	1-1/2 PAIR	HINGES	MCKINNEY	TA2714 4 1/2 x 4 1/2 26D	---
1	1	PASSAGE SET	DESIGN HDWR	X75-F-26D 2 3/4 x ASA	---
1	1	OCCUPANCY INDICATOR	SCHLAGE	B571 626	---
1	1	DOOR CLOSER	NORTON/DESIGN HDWR	316 x ALUM x 5NB	---
1	1	KICK PLATE	ROCKWOOD	8" x 22" x 3/2D	---
1	1	HINGE PIN DOOR STOP	ROCKWOOD	52B NP	---
3	3	SILENCERS	NORTON	60B	---

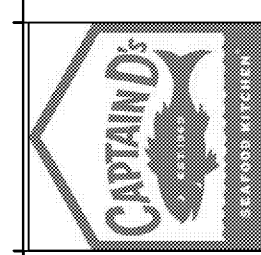
NOTES:

- REFER TO T-11 FOR VENDOR CONTACT INFORMATION, TYP.



A NEW LOCATION FOR
CAPTAIN D'S
1236 W. FLOYD BAKER BLVD
GAFFNEY, SC 29342

STAR CHAIN, INC.
11375 POINTE PLACE,
ROSWELL, GA 30076



Job Number:
68F-0071

Revisions:

JANUARY 16, 2019

A-11.0

DOOR & WINDOW SCHEDULES CONVERSION